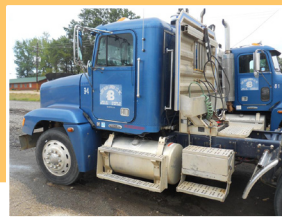


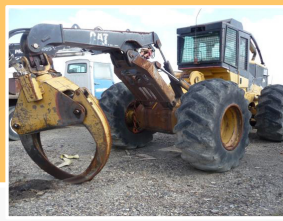
**GLOBAL ONLINE AUCTION**  
**NOVEMBER 9, 2011**  
**WEDNESDAY • 7:00 AM CST**

**Bean Lumber**  
 229 S Spur 8, Glenwood, AR 71943 and  
 843 S Mountain Street, Amity, AR 71921



**GLOBAL ONLINE AUCTION**  
**NOVEMBER 9, 2011**  
**WEDNESDAY • 7:00 AM CST**

**Bean Lumber**  
 229 S Spur 8, Glenwood, AR 71943 and  
 843 S Mountain Street, Amity, AR 71921



**UNDER INSTRUCTION OF FIRST CAPITAL:**

**A GLOBAL ONLINE AUCTION ON BEHALF OF BEAN LUMBER:  
 FEATURING A COMPLETE FLEET OF EARTH MOVING  
 EQUIPMENT AND MATERIAL HANDLING VEHICLES**



**↑ B**  
**BEAN LUMBER**

**UNDER INSTRUCTION OF FIRST CAPITAL:**

**A GLOBAL ONLINE AUCTION ON BEHALF OF BEAN LUMBER:  
 FEATURING A COMPLETE FLEET OF EARTH MOVING  
 EQUIPMENT AND MATERIAL HANDLING VEHICLES**



**AUREON BIOSCIENCES**

**UPCOMING SALES CALENDAR**

**GLOBAL ONLINE AUCTION : NOVEMBER 15, 2011 7:00 AM EST**

**Complete Facility Closure Of The Innovative Life Sciences  
 Company Dedicated To Prostate Cancer Research**

**WOULD YOU LIKE TO SELL AN ASSET?**  
 Simply call 1-858-847-0656 and speak with *George Wandachowicz* Vice President Sales for more information. We will be glad to listen to your specific needs and from that HGP can prepare a detailed solution for your review that will maximize the returns for you're assets for the company and It's Shareholders.



Fan us on **facebook** Follow us on **twitter**

©2011 HERITAGE GLOBAL PARTNERS, ALL RIGHTS RESERVED  
 Complete Terms & Conditions are contained in the Sale Catalog and on the website at [www.hgpauction.com](http://www.hgpauction.com).  
 Please review the Terms and Conditions prior to placing bids on any items. Global Headquarters: San Diego, California

[www.hgpauction.com](http://www.hgpauction.com)

[www.hgpauction.com](http://www.hgpauction.com)





# GLOBAL ONLINE AUCTION



**NOVEMBER 9, 2011**  
**WEDNESDAY • 7:00 AM CST**

## Auctioneer's Note:

HGP is pleased to be selected to conduct this Global Online Auction of **Bean Lumber**: Under Instruction of First Capital.

This Online Sale features a Complete Fleet of Earth Moving Equipment, Material Handling Vehicles and Support Equipment.

Please view our website at [www.hgpauction.com](http://www.hgpauction.com) for the bidding instructions and the full terms of the sale. Thank you for your interest, and we look forward to providing you quality equipment sales and World Class Service.

## Public Preview:

Date/Time:  
**November 7th and 8th (9:00am - 5:00pm CST)**

Locations:  
**229 S Spur 8 Glenwood, AR 71943**

All Interested Parties Should Contact:  
**David Barkoff**  
 Email: [dbarkoff@hgpauction.com](mailto:dbarkoff@hgpauction.com)  
 Office: +1 650. 649. 0147

## Additional Information:

For more information including a photo gallery, equipment list, terms and conditions of sale and more, please visit:

**[www.hgpauction.com](http://www.hgpauction.com)**

*Buyer's Premium: 15% cash buyers; 18% for credit card purchasers (Refer to Term 7 in the Auction Terms and Conditions for details).*



Under Instruction of First Capital: A Global Webcast Auction on Behalf of Bean Lumber:  
**FEATURING A COMPLETE FLEET OF EARTH MOVING EQUIPMENT AND MATERIAL HANDLING VEHICLES**



## Facility Support Equipment

**Assorted Chain Rack Lots**  
**Denyo DCA-45SS1U3** Generator, Denyo-MQ Power Whisperwatt - 45, diesel powered AC generator, dual phase, 60 hg, 3 phase, 4SKVA, single phase 26 KVA, voltage 3 phase 240-480 volts, single phase 240-120 volts  
**Ingersoll Rand DA-30:** Dressel Engine, 40" roller  
**Ingersoll Rand T-30** air compressor, with Kohler Command II gasoline engine, electric start, mounted on a Ford custom F100 flatbed truck, dual wheel,, manual transmission, V-8 gasoline engine, behind cab fuel tank with 12 volt fuel pump  
**Lincoln DC Arc Welder (QTY. 2):** Classic I, 200 amp, gasoline welder  
**Miller Big Blue 251D:** DC Arc Welder, 250 amp, diesel welder  
**Tennant 385:** Sweeper



## Facility Support Vehicles

**Chevrolet Silverado:** Extended cap, 80612 mileage  
**Chevrolet Silverado:** Model z71, Extended cab, 4x4, auto transmission, bucket cloth seats, 223,227  
**Chevrolet Suburban:** 4x4, cloth interior, LS1500, hi-low floor shift, auto transmission, gas engine, 180,583 mileage  
**Ford F250 (Qty. 2)**  
**Ford F250:** Crew cab, flat bed, 59219 mileage  
**Ford F350:** Utility truck, std. transmission, 79,382 mileage, with auto crane  
**GMC-SLE:** Pickup, 8' bed  
**GMC:** Truck flat-bed, camper special 250  
**Nissan Maxima:** Standarda transmission, vinyl seats



Complete Sales Catalog Available Online @ [www.hgpauction.com](http://www.hgpauction.com)





Under Instruction of First Capital: A Global Webcast Auction on Behalf of Bean Lumber:  
**FEATURING A COMPLETE FLEET OF EARTH MOVING EQUIPMENT  
 AND MATERIAL HANDLING VEHICLES**

**Trucks and Tractors**

**Freightliner FLD12064 (Qty. 3):** Conventional tractor, manual monitor 10 speed hi-low transmission, tandem axle, dual wheel, behind cab chain rack, dual fuel tanks, 886,919 mileage  
**Freightliner 4964F Tractor:** 10 speed manual transmission, 200,289 mileage  
**International Harvester:** Dump Truck  
**Kenworth W900:** Tri-Axle, Dual wheel, 814,860 mileage  
**Mack R690ST:** Dump Truck, Mileage 138,294  
 Truck: tilt bed, 22' bed, driver side hydraulic controls  
**Water spray truck:** GMC tandem axle  
**Western Star Tractor:** 10 speed Eaton Fuller hi-low transmission, tandem axle, dual wheel, behind cab chain rack, dual fuel tanks  
**Western Star 4964F (Qty. 3):** Tractor, manual Eaton Fuller 10 speed hi-low transmission, tandem axle, dual wheel, behind cab rack with winch, dual fuel tanks, 285,736 mileage  
**Peterbilt 379:** Conventional tractor, manual 13 speed Eaton Fuller hi-low transmission, tandem axle, dual wheel, behind cab AL rack, dual fuel tanks, 271,789 mileage



**Trailers**

**Hilbilt (Qty. 2):** Dump trailer, 6' x 22' x 4', dump box, tandem axle  
**Load King Trailers:** tri-axle, removable neck  
**Log trailer:** double bunk, 40', tandem axle



Under Instruction of First Capital: A Global Webcast Auction on Behalf of Bean Lumber:  
**FEATURING A COMPLETE FLEET OF EARTH MOVING EQUIPMENT  
 AND MATERIAL HANDLING VEHICLES**

**Loaders**

**Caterpillar 644D (Qty. 2):** Wheel loader, diesel engine, articulated steering, pneumatic tires, est. 3 cu ft bucket, work lights, EROPS, 24,889 hours  
**Caterpillar 980C:** Wheel loader, articulated steering diesel engine, pneumatic tires, est. 9' x 6' bucket, work lights, EROPS, 110 hours  
**John Deere 644H:** Wheel loader, diesel engine, articulated steering, pneumatic tires, est. 10' x 4' bucket, work lights, EROPS, 38,876 hours  
**Knuckle Boom loader:** Prentice 610 est., 33 ft-boom, Prentice hydraulic, log grapple, s/n A877, climate control, EROPS specially manufactured, tandem axle, dual wheel trailer with (4) cuttriggers  
**Knuckle Boom loader:** Prentice 210D, 22 ft-boom, Prentice hydraulic, log grapple, EROPS, mounted on a Ford truck with Fuller Road Ranger, hi-low 8 speed transmission, Vin # - LL81DV208832, 601,153 miles  
**Volvo L150C:** Wheel loader, xxx cap., diesel engine pneumatic tires, logging clamp, articulated steering, windshield crash protection, work lights, EROPS, 43,362 hours



**Dozers, Skidders and Graders**

**Caterpillar 518C Skidder:** diesel engine, enclosed FROPS, pneumatic tires, hydraulic log grapple  
**Caterpillar 535B Skidder:** diesel engine, enclosed cab, ROPS, pneumatic tires, hydraulic log grapple  
**Caterpillar D6B Dozer:** hydraulic straight dozer blade, ROPS, 20" single Grouser shoes, sweeps, 11' blade  
**Caterpillar D6E Dozer:** hydraulic straight dozer blade, ROPS, 22" single Grouser shoes, 10583 hours  
**Caterpillar D7H Dozer (Qty. 2):** hydraulic straight dozer blade, tilt cylinders 24" single Grouser shoes, ROPS, sweeps multi-shank ripper, 12 ft blade  
**Motor Grader:** 14' blade, rippers diesel engine, pneumatic tires, FOPS, 23591 hours  
**John Deere 310C:** 1.5 cu ft bucket, front end bucket, back how attachment with 2-outiggers, diesel engine  
**John Deere 644H:** Wheel loader, diesel engine, articulated steering, pneumatic tires, est. 10' x 4' bucket, work lights, EROPS, 38,876 hours





Under Instruction of First Capital: A Global Webcast Auction on Behalf of Bean Lumber:  
**FEATURING A COMPLETE FLEET OF EARTH MOVING EQUIPMENT  
 AND MATERIAL HANDLING VEHICLES**



**Fork Lifts**

**Clark, C500Y-160DG (Qty. 5):** 16,000 lb cap, diesel engine, pneumatic tires, 210" lift height, 2 stage mask, side shift on carriage, 8 ft forks, FOPS hrs  
**Daewoo D70S-2 (Qty. 4):** Forklift, 2005, 14,500lbs cap, diesel engine, Pneumatic tires, 177" lift height, 2 stage mask, wide carriage with side shift, 4 ft forks enclosed  
**Daewoo Forklift:** (2005) 14,500lbs cap, diesel engine, Pneumatic tires, 177" lift height, 2 stage mask, wide carriage with side shift, 4 ft forks enclosed, 7,699 hours  
**Nissan DF05N70V (Qty. 3):** Forklift, 15,500lb cap, diesel engine, Pneumatic tires, 177" lift height, 2 stage mask, wide carriage with side shift, 4 ft forks enclosed  
**Nissan, EGH02A30V:** 6,000lb cab, diesel engine, solid tires 157" lift height, 2 stage mask, side shift on carriage, 4 ft forks, FOPS, 51,197 hrs  
**Taylor TLS-900:** Forklift loader, 90,000 lb cap., diesel engine, pneumatic tires, 240" lift height, 2 stage mask, logging clamps, enclosed FOPS, 3669 hours

**Fork Lifts**

**Taylor T-3601 (Qty. 3):** Forklift, 2003, 36,000 cap, diesel engine, Pneumatic tires, 177" lift height, 2 stage mask, wide carriage with side shift, 4 ft forks enclosed FOPS  
**Taylor TE-300M:** 30,000 lb cap, diesel engine, pneumatic tires, lift height, 2 stage mask, 480 hours, FOPS, side shift on carriage, (1) 8 ft fork



Under Instruction of First Capital: A Global Webcast Auction on Behalf of Bean Lumber:  
**FEATURING A COMPLETE FLEET OF EARTH MOVING EQUIPMENT  
 AND MATERIAL HANDLING VEHICLES**



**Cutting Machines**

**Tiger Cat 724D:** Cutting machine, 2003, pneumatic tires, diesel engine, 48" cutting blade, 4-grabbing points  
**TIMCO T445C:** Cutting machine, crawler, 24" wide track, 360, rotating carriage est 30 ft hydraulic boom arm, with Quadco Tree Cutter, 48" blade, 4-grabbing points



**Cranes**

**Galion Model 150:** 15 ton, rough terrain, 2,726 hrs  
**Grove RT635:** Hydraulic crane, 35 Ton rough terrain 4x4, 105 ft, 4 section mask, dual winch, 3 sheave travel block, 4-out riggers  
**JLG:** Hydraulic Crane

