

GLOBAL ONLINE AUCTION
MARCH 20, 2012
TUESDAY • 7:00 AM PDT

ENERGY INNOVATIONS
14100 Danielson Street
Poway, CA 92064



Energy
Innovations™



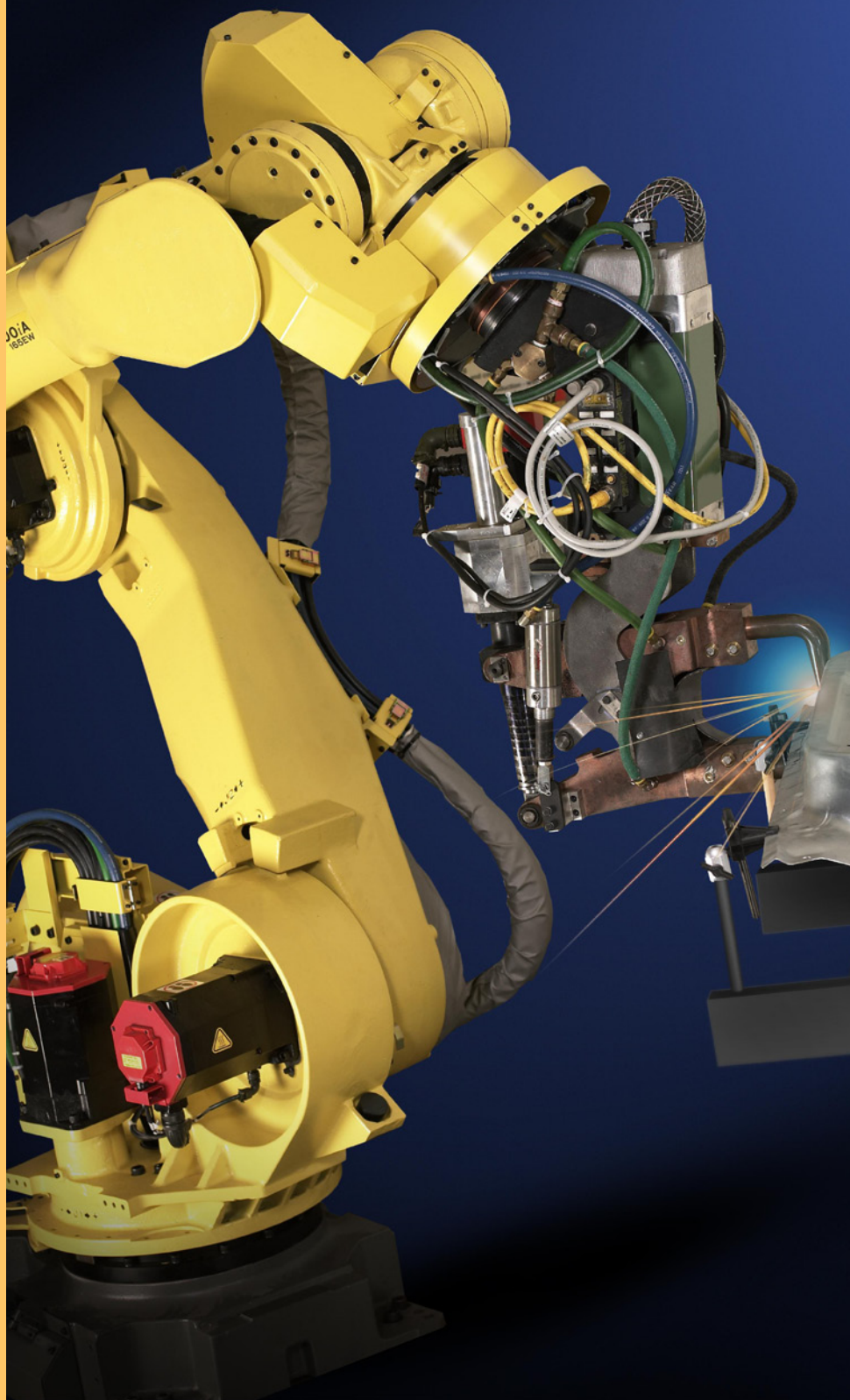
**WIDE SELECTION OF ASSETS AVAILABLE FROM A
60,000 SQ. FT. SOLAR PANEL ASSEMBLY FACILITY**



Heritage Global Partners

Asset Advisory and Auction Services
A Legacy since 1937

www.hgpauktion.com



GLOBAL ONLINE AUCTION



Heritage Global Partners

Asset Advisory and Auction Services

A Legacy since 1937



**Energy
Innovations™**

MARCH 20, 2011
TUESDAY • 7:00 AM PDT

Auctioneer's Note:

HGP is pleased to be selected to conduct this Global Online Auction of **Energy Innovations**.

This Global Online Auction features a wide selection of assets available from a 60,000 sq.ft Solar Panel Assembly Facility.

Please view our website at www.hgpauction.com for the bidding instructions and the full terms of the sale. Thank you for your interest, and we look forward to providing you quality equipment sales and World Class Service.

Best Regards,

Ross and Kirk Dove

Managing Partners

Public Preview:

Date/Time:

Monday, March 19 (9:00am - 4:00pm)

Location:

14100 Danielson Street, Poway, CA 92064

All Interested Parties Should Contact:

George Wandachowicz

Email: gw@hgpauction.com

Office: +1 858.847.0656

Additional Information:

For more information including a photo gallery, equipment list, terms and conditions of sale and more, please visit:

www.hgpauction.com

*Buyer's Premium: 15% cash buyers; 18% for credit card purchasers
(Refer to Term 7 in the Auction Terms and Conditions for details).*

SALE WILL BE CONDUCTED IN ENGLISH
AND WILL ACCEPT US CURRENCY ONLY



WIDE SELECTION OF ASSETS AVAILABLE FROM A 60,000 SQ.FT SOLAR PANEL ASSEMBLY FACILITY



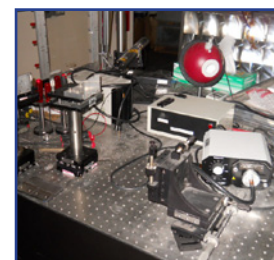
Solar Assembly Equipment

Lot: Solar Module Cell Package Assembly Data Acquisition/ Test Station

[Station#1: Agilent N3000A System DC Electronic Load ; National Instruments GPIB-USB-HS Interface Cable ; ASUS Desktop Computer With Monitor ; Accopian Power Supply] (Station #2: Agilent N3000A System DC Electronic Load - Damaged ; Dell Pentium-D Desktop Computer With Monitor ; Accopian Power Supply) (Alignment Apparatus#1: Eppley #N1P Radiometer Without Power Source m ; Point Grey Flea2/ FL2-08S2M CCD Camera ; Newport TSX-1D Based Stage ; Aluminum Framework) (Alignment Apparatus#2: Newport TSX-1D Based Stage ; Aluminum Framework)]

Plasma Etch PE-200 Plasma System With Touch Screen Control. [Chamber 17"Lx14"Hx16"Deep]. With BOC Edwards E2M40-PFPE Vacuum Pump

PlasmaTreat Custom/FG5002 & 1PFW10 Bonding Surface, 20-KV Plasma-Beam Pre-Treating System. Year 2011. In Crate, Never Installed



Chemical Storage and Handling

Binder ED-53-UL Oven, 300°C. Chamber 15"L x 15"H x 13" Deep with Rolling Stand 34"H

Blue M POM-166A-EHP Oven, 316°C. Chamber 24"Lx48"Hx24"Deep

Blue M OV-490A-3 Oven, 38°C To 260°C. Chamber 19"Lx18"Hx15"Deep

Genie Scientific 600SL Fumehood with Storage

Justrite 25450 Flammable Liquids Storage Cabinet

LACO Tech VDS1218006 (Qty. 3): Vacuum Chamber Station

Lindberg/Blue M/TPS ESP-401A-10 Mechanical Oven

Lunaire/Tenney T10C Temperature Chamber. Chamber 24"Lx28"Hx26"Deep

ScienTemp Corp/Integrated Dispensing Sol 45-01A Chemical Storage Refrigerator/Freezer

Sikama International Falcon/8x5C Multi-Purpose Reflow/Curing System

Tenney/TPS T30RC-2 Environmental Chamber, Inner Chamber 36"Lx36"Hx36"Deep

Tenney/LR Environmental TR40 Environmental Chamber. Inner Chamber 40"Lx40"Hx44"Deep

Complete Sales Catalog Available Online @ www.hgpauction.com



WIDE SELECTION OF ASSETS AVAILABLE FROM A 60,000 SQ.FT SOLAR PANEL ASSEMBLY FACILITY



Automated Robots and Workstations

AllenBradley/Rockwell Automation/THK-Bas Pick & Place Robotic Gantry Workstation

(For Solar Panel CPA/Cell Package Assembly Placement)

Fanuc R2000iA/165F Robot Based, Structure-Assembly Workstation

Fanuc M710iC/70 Robot Based (With Multi-EOATs), Solar Module Assembly & Alignment WorkCell

Magtrol Dynamometer Testing Station: with Qty-3 Hysteresis Dynamometers And Qty-1 Controller

ShopBot CNC Gantry-Type XYZ Personal Robotic Tool (Driller). With Acer Tower Computer And ShopBot Driver Tower Computer. Table Approx 120" Lx64" W

THK-Based Pick & Place Robotic Gantry Workstation

(For Solar Panel CPA/Cell Package Assembly Placement). Consisting Of: [Overall Footprint Workstation 8'Lx8'W ; With 3-THK Actuator Robotic Gantry ; Gantry With Travel Approx 64"x68" ; (Qty-2) Adhesives Dispenser Units; (Qty-1) Pick & Place Gripper Unit ; (Qty-1) Cognex Vision Camera Unit] [Workstation And Animatic Motors Controlled By G-Code/SMNC; Hewlett Packard MD-Opteron64 Windows Vista Computer With Monitor] [Also Includes: Metal Worktable 4'L And Seating Stool]

Assorted Test & Measurement Equipment

ADAC Systems Cure-Spot-50 UV Cure System

Agilent E3640A (Qty. 2): DC Power Supply

Agilent N3300A System DC Electronic Load (Mainframe) Reliability Lab

Agilent N3305A Electronic Load Plug-In Module (150V / 60A, 500W). Reliability Lab

AmRel FEL-60-1/FEL-300-1 Programmable Electronic Load

BK Precision 4017A 10MHz Sweep/Function Generator

Fluke 333/337 True RMS Clamp Meters

Hi-Pot Test Station Consisting Of: (1) QuadTech Guardian-1030 AC/DC/IR HiPot Tester; Dell P4 Computer With Monitor; Symbol #FZ barcode Scanner; Plastic Utility cart 42" H

Lot: Assorted Omega Instruments Test Equipment/ Accessories, Includes: (1) #OM-EL-USB-TC Thermocouple; (1) #OMB-DAQ-56 USB Data Acquisition System; Assorted

Megger DLRO-10X Digital Low Resistance Meter

Thermocouple Probes/Parts/Wiring

My Weigh i5500 Digital Scale (Cap 5500g x 0.1g)

Omega HH309 Data Logger Thermometer

Tantec Contact Angle Meter

TekPower 3710A (Qty. 2): DC Electronic Load

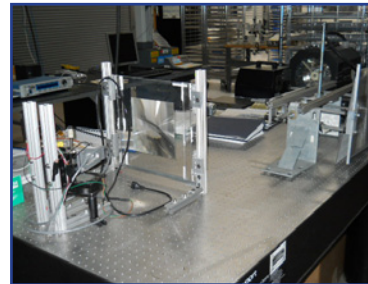
Tektronix TDS-220, 100MHz 1GS/s Two-Channel Digital Real-

Time Oscilloscope

Vellman PCSU1000 Two-Channel USB PC Oscilloscope



WIDE SELECTION OF ASSETS AVAILABLE FROM A 60,000 SQ.FT SOLAR PANEL ASSEMBLY FACILITY



Test and Inspection Equipment

EIT Power-Puck-II UV Cure Measurement System Light/Lens Test Station

BriteLight 571/571EB 1000Watt 9" Xenon Light Fixture With Power Source—Meter At 739 Hours ; Uvitron Sunray-400SM UV Flood Lamp ; Qty-3 Assorted Lens Fixture Assemblies. Does Not Include E.I. IP Parts. Does Not Include Newport Table

Newport RS-1000 Sealed-Hole Optical Table, With (4) RL-2000 LabLegs. 94"Lx47"W, Overall Height 37"H

Non-Rivet Clinch-Type Attachment Workstation

(For Solar Panel Recover Light Shields Attachment) Consisting Of: [General Pneumatics Tools Based, Clinch-Type Attachment Station. Overall Footprint Attachment Station 10'Lx5'W. Station Top Contains 10'x5'W, Dual-Track 1.25-Belt Conveyor. Please see Auction Web Photos For Example Of Clinch-Type Attachment]. [Overall Workstation Area Also Includes: (Qty-4) Silicone/Adhesives Dispense Worktable Stations 6'L, Each With Kahnetics Foot Switch ; (Qty-1) Wood Top Worktable Station ; (Qty-1) Metal Panel-Transfer Cart 4'Lx4'W]

Solar Cell Package Assembly T&M Reliability Test Station

[QuadTech Guardian-1030 AC/DC/IR HiPot Test Station ; National Instruments FieldPoint Ethernet Network Based I/O Framework (1@FP-1600, 4@FP-DO-400, 3@FP-TC-120, 1@FP-CTR-502, 1@FP-SG-140, 1@Lambda-DSP-100-12, 1@Cable-GPIB-USB-HS) ; Agilent E3548A Dual Output DC Power Supply ; Keithley 2100 6.5Digit MultiMeter ; APC #100 UPS ; Symbol USB Barcode Scanner ; Cart 2'x5'H]

Stereozoom Inspection Microscope: (0.7X - 4.5X) with Articulating Boomstand And AmScope 150W Haloid Light Ring. With DCM300 3M-Pixel USB2 Microscope Camera

Assorted Lab Support Equipment

Agilent E3640A DC Power Supply

Brady 300-MVP-Plus (Qty. 3): Printer-Based, Barcode Label Station. [Brady 300-MVP-Plus Barcode Label Printer; Metrologic USB/Bluetooth Wireless Barcode Scanner Gun; EnPower Pentium-4 Computer; Acer Monitor; Utility Cart 42"H]

Branson 5510R-DTH Ultrasonic Cleaner

EFD Ultra-2800 Dispense System

EFD 1000XL Dispense System

EFD Performus-III/7012332 (Qty. 3): Dispense System

ESD ESP-Solder-Plus Dispense System

GAST DOA-P704-AA Lab Vacuum Pump

Grayco C20/60CC-Checkmate Dispense Pump System

Lambda Gen1500W (Gen-2.6) Power Supply

Leister Labor-S Hot Air Tool

Lincoln 274217-Series-A Air-Operated Dispense Pump

Lot: (1) Thermolyne Type-2200 12" Hotplate And (1) Barnstead Type-Cimarec 8" Hotplate/Stirrer

MasTech HY5003D DC Power Supply

Nordson/EFD Ultimius-III/7017068 Dispense Workstation

SST 1200-TableTop Soldering Furnace System with Adixen ACP15 Vacuum Pump

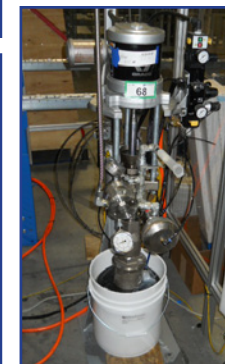
Substrate/Lens Attachment Apparatus

TDK Lambda Genesys 10/15kW Programmable DC Power Supply

Teal Electronics PCDU-STR6-1/6050001 (Qty. 4): Power Supply

Teli Dispensing Asia 1500 Liquid Dispenser System (NEW)

Va-Tran MPS-1-602-D Steam-Cleaner



Complete Sales Catalog Available Online @ www.hgpauction.com



WIDE SELECTION OF ASSETS AVAILABLE FROM A 60,000 SQ.FT SOLAR PANEL ASSEMBLY FACILITY



Machine Tools

Bridgeport 1-HP Vertical-Knee Mill Machine
BR Tools AHP-10 Air hydraulic Pump Press
Central Hydraulics 20-Ton H-Frame Press. Overall 60"Hx27"W
DeWalt DW368 7.25" Circular Saw
DeWalt DW997 18 Volt Drill
Drill Doctor 750X Drill Sharpener
Gantry Crane, 125"L x 120"H
Jet JMD-15 (Stk#350017) Milling/Drill Machine
Lot: Rigid #R5013 1/2" Drill ; Makita #9557NB 4-1/2" Grinder
Wuko #1003 Seam closer
Lot: 4.5" Angle Grinder; DeWalt DW411 Palm sander; MM #58427 Jig saw; DeWalt 300 RotoTool ; Black & Decker Electric Cutter; Chicago Electric RotoTool; Dremel 4000 RotoTool ; Ksun 2012XLST Labeler
Makita BHP452/STD141 Drill Combo Set
Makita HR2475 Combination Hammer
Makita LXFD01 Drill
Milwaukee 6519-30 Sawzall
National Steel Metal Machines U7212 72"L Brake, 12-Gauge
Rigid 2048-0S Metal Storage Box

Facility Support Equipment

1989 Ford F600-Deisel Stake-Bed Truck: 350584 Miles; 5-Speed Transmission; 2-Speed Rear End; 16'L Bed
AirMaster 30" Fan. Warehouse Assembly Area-SouthEast End
Appliance Handtruck Dolly
Ballymore Personnel Safety Lift Cage, Forklift Attachment, 1000-Lbs Capacity ; 47"Lx39"W
Caterpillar CC20/LP Forklift Truck: 8000-Lbs capacity; Tilt & Sideshift; 42" Forks ; Includes Fork Extension Set 60"L; 9164 Hours
Elite Circuit Equipment Company E6924 Screen Printer
Genie Superlift-Advantage/SLA-20 Materials Lift. Cap. 800-Lbs
Global Waste Gondola-Cart
Great American Pallet Jack, 5500-Lbs capacity; 48" Forks
Ingersoll Rand UNI-7TAS-100-L Air Compressor w/ Receiver Tank
Lot: (3 Total) Metro-Type Wire Shelves Storage Carts
Lot: 18-Linear-Foot Of Pallet Shuttle Assembly Line Conveyor
Lot: (Qty-10) Collapsible & Stackable, Wire-Wall, Stillage Container
Massdam 2-Ton/6-Ft-Reach Power-Pull
Rigid 2048-0S Metal Storage Box (Gang Box). 48"Lx24"Wx29"H
SatCon AE-50-60-PV-A 50kW / 50kVA Solar Cell Power Conditioning System
Square D 15T85H / 15KVA Sorgel 3-Phase Transformer
Tech Repair Workstation: Soldering and Screwdriver Stations
U-Line Pallet Jack: 5500-Lbs capacity; 48" Forks
U-Line H1117 Scale: 65Lbs x .005Lbs



WIDE SELECTION OF ASSETS AVAILABLE FROM A 60,000 SQ.FT SOLAR PANEL ASSEMBLY FACILITY



Office Support Equipment

Acer Travelmate-2480 Laptop Computer
 Canon PowerShot-A630 Digital Camera
 Dell Latitude-E6510 Laptop Computer
 Dell XPS-M1530 Laptop Computer
 Dell Inspiron-600M Laptop Computer
 Fellowes DM1700C Paper Shredder
 HP CM1312nfi Color LaserJet Multifunction Fax/Printer
 HP DesignJet-1000/C6075B Large Format Color Printer
 IBM T60/T60P/T42P/ Laptop Computers
 I.T. Network Server Rack
 Infocus LP330/IN104 DLP Projectors
 Lenovo Thinkpad-X201 Laptop Computer
 Lot: (3) SwissGear Portable Battery Chargers For iPod
 Lot: Polycom SoundStations/Phones. [(Qty-2) IP6000 SoundStations; (Qty-6) IP650 Phones; (Qty-8) IP450 Phones; (Qty-4) IP335 Phones
 Maytag MBR2256KES4 Upright Refrigerator/Freezer
 Olympus Stylus-Verve Digital Camera
 Sanyo VPC-C40-Xaxti Digital Movie Camera
 SPi Guide/Raz-iR (MobiR-M3) Video Recording Camera



Office Furnishings

DGO Artware Lobby Furniture (5-Piece Set)
Lab Formica-Top Table 8'L. With Power Strip
Lot: (10 Total) Framed Photos Depicting Solar Panel Theme
Lot: Assorted Office Furniture, (Qty-1) Conference Table 10'L ; (Qty-2) Conference Tables 8'L; (41 Total Assorted) Chairs With Casters; (38)Two-Drawer Metal Vertical File Cabinets; (20) Wood Work surface Panels 60"Lx30"W; (7 Assorted) Chairs Without Casters; (8) Metal Bookcases; (3 Total) Misc Utility Tables 5'L/4'L/3'L; (2) Desk lamps; (1) Coat Stand; (1) Two-Drawer Wood Cabinet; (1) Easel
Meeting Room Furniture (9-Piece Set)
Receptionist Station (3-Piece Set): 6'L Simulated Pine Desk Station; 2-Drawer Cabinet; Utility Table 30"H
Standridge Granite Surface Table
Suncrust Outdoor, Plastic Utility Storage Cabinet



Complete Sales Catalog Available Online @ www.hgpauktion.com

GLOBAL ONLINE AUCTION
MARCH 20, 2012
TUESDAY • 7:00 AM PDT

**WIDE SELECTION OF ASSETS AVAILABLE FROM A
 60,000 SQ. FT. SOLAR PANEL ASSEMBLY FACILITY**



**Energy
Innovations™**



**Energy
Innovations™**

PROUDLY BUILT
IN THE USA

UPCOMING SALES CALENDAR

GLOBAL ONLINE AUCTION ON BEHALF OF CALISOLAR



STARTING: March 22, 2012 - 7:00 am PDT
ENDING: March 23, 2012 - 10:00 am PDT

Global Online Sale of Complete State of the Art, Fully Automated, Commercial-Scale PV-Wafer and Cell Processing line in Sunnyvale, California

GLOBAL ONLINE AUCTION ON BEHALF OF UNISOLAR



STARTING: March 23, 2012 - 12:00 pm EDT
ENDING: March 29, 2012 - 10:00 am EDT

Global Online Auction of Thin Film Solar Cell Manufacturing Facility of United Solar Ovonic Division of Energy Conversion Devices.

BY ORDER OF THE BANKRUPTCY COURT, CASE NUMBER #12-43167

GLOBAL ONLINE AUCTION ON BEHALF OF SWIFT ENGINEERING, INC.



STARTING: March 28, 2012 - 10:00 am PDT
ENDING: March 29, 2012 - 2:00 pm PDT

Bulk Sale Offering of a Complete Race Series Package for Start-Up Open-Wheel Spec Series, no longer Required by Swift Engineering, Inc.

GLOBAL ONLINE AUCTION ON BEHALF OF SOLARIA & ENTECH SOLAR



STARTING: April 4, 2012 - 7:00 am PDT
ENDING: April 5, 2012 - 10:00 am PDT

Global Online Semiconductor and Solar Industries Sector Sale Featuring, Lamination Equipment, Test Equipment, Analyzers, Pumps, Motors, Chillers, Parts, Accessories, and Much Much More!

©2012 HERITAGE GLOBAL PARTNERS, ALL RIGHTS RESERVED

Complete Terms & Conditions are contained in the Sale Catalog and on the website at www.hgpauction.com. Please review the Terms and Conditions prior to placing bids on any items. Global Headquarters: San Diego, California

AFFILIATIONS



**INDUSTRIAL
AUCTIONEERS
ASSOCIATION**



Commercial Finance Association



WOULD YOU LIKE TO SELL AN ASSET?



Simply call **1-858-847-0656** and speak with **George Wandachowicz** Vice President Sales for more information. We will be glad to listen to your specific needs and from that HGP can prepare a detailed solution for your review that will maximize the returns for you're assets for the company and it's Shareholders.

www.hgpauction.com