

AS APPROVED BY THE QUEBEC SUPERIOR COURT

4 DAYS
2 LOCATIONS

PUBLIC AUCTION

AUCTION #1 ~ VANCOUVER

Wed. & Thurs.
Aug. 15 & 16, 2012
10am EACH DAY (PDT)

6001 GRANT McCONACHIE WAY,
RICHMOND, BRITISH COLUMBIA



**AVEOS FLEET
PERFORMANCE
INC.**
AIR FRAME DIVISION

AUCTION #2 ~ MONTREAL

Wed. & Thurs.
Aug. 22 & 23, 2012
10am EACH DAY (EDT)

720 BOULEVARD DE LA CÔTE VERTU,
DORVAL, QUEBEC

AN UNPRECEDENTED OFFERING OF COMMERCIAL AIRCRAFT (MRO) MAINTENANCE, REPAIR AND OVERHAUL TOOLING & EQUIPMENT

**ONSITE &
WEBCAST**

**2 HANGAR
FACILITIES
OVER 600,000
SQ.FT.**



BID LIVE, ON-LINE! REGISTER AT EITHER



Hilcast™ Webcast Auctions
Bringing Industrial M&E Auctions to You *Live!*

**MAJOR TOOLING & MRO SPECIFIC
ASSETS AVAILABLE FOR PRIOR SALE**

For Further Details or to Arrange a Pre-Inspection Please Contact Mike McIntosh at 416-242-3560 or mmcintosh@maynards.com

SALE CONDUCTED BY

Maynards
Industries Ltd. SINCE 1902

AUCTIONS | LIQUIDATIONS | APPRAISALS

75 International Blvd. | Suite 102

Toronto, ON M9W 6L9 | Tel: 416.242.3560

www.maynards.com

Hilco Industrial, LLC
Auctioneers • Liquidators • Appraisers

31555 W. 14 Mile Road | Suite 207
Farmington Hills, MI | 48334

T. 248.254.9999 | F. 248.254.9995

www.hilcoind.com

IN CONJUNCTION WITH

pplgroup™
distressed asset solutions



Heritage Global Partners



**COUNSEL
RB CAPITAL LLC**

PARTNERS IN SUCCESS™

Auction 1: **Wed & Thurs, Aug. 15 & 16
10am Each Day (PDT)**
 Location: **6001 Grant McConachie Way
(North Service Rd.)
Richmond (Vancouver), BC**
 Preview: **Tues, Aug. 14 from 9am-5pm**
 Contact: **Mike McIntosh 416-242-3560**



DIRECTIONS: ONLY 5 MINUTES FROM VANCOUVER INTERNATIONAL AIRPORT - FOLLOW SIGNS FOR VANCOUVER; TURN LEFT ON TEMPLETON; LEFT ON NORTH SERVICE RD., DESTINATION WILL BE ON THE RIGHT.

AIRBUS A320 TOOLING



Brake Puller - Main Landing Gear • Outboard Rigging Kit • Fuel Tank Leak Check • (3) Aircraft Storm Protect Kit • Protractor - Control Surface Deflection • **THRUST** Reverser Sling • **APU** Hoist • **BALLAST** PAX Door Weights • **T/R** Hold Open Set • CFM-56 Bootstrap Kit • CF6-80 Inlet Cowl • Elevator Sling • N4 R/I Bushing Kit • Elevator Locking Tool • **AILERON** Lifting Frame Assy • **BALLAST** PAX Door Weights • Elevator Neutral Gauge • Flap Rigging TRA Board • TR3 Flap Rig Board • TR2 Flap Rig Board • Leading Edge Slat Sling • Leading Edge Slat Sling • **RAT** Protection Screen

BOEING 767 TOOLING



NLG Lower Seal Tool • Gear Jack Assembly Tool • I/B/O/B T/E Flap Lock • CF6-80 Pylon Strut Sling • **MLG** Trunnion Pin Equipment • Accessory Bay Platform • **HOIST** B767 Flap Bracket • Bulk Cargo Door Clamp • **NLG** Spring Extender • Portable Sand Blaster • **MLG** Side Brack Springs • Pressure Washer Kit • Spring Extender Equipment • Water Ram Tool • Hold Open • Rig Prox Sensors Set • **AFT** Flap to INBD. Restraint • **HOIST** B767 Flap Bracket • **MLG** Side Strut Sling • **MLG** Downlock Stop Shim Jig • Load Positioner • Fuel Leak Test Plug • **MLG** Retract Pin Puller • Horizontal Stab Pivot BRG./R/I Kit • Heat Exchanger Cleaning Wands • **MLG** Side Strut Spring Compressor • **NLG** A-Frame Support • Load Positioner Adapter • **APU** Sling • **MLG** Lower BRG Seal Kit • Cradle Adapter • Jacking Hinge H Set • Actuator Pin Kit • Bulk Cargo Door Clamp • **MLG** Retract Actuator Spring • Lock MTCE • Cargo Door Sling • **NLG** R/I Kit • Pass. Slide Dummy Kit • **Aileron** Rigging Bar • Inlet Cowl Sling • **AILERON** Rig Bar • JT9D/PW4000 T/R Sling • JT9D/PW4000 T/R Sling • Cabin Door Dummy Weight Kit • Qty of Hoist Adapters • **APU** Cradle • Stab Trim Relief • CF6-80 T/R Sling

LARGE QTY. OF AVIONICS & MISC. EQUIPMENT & TOOLING



767/777 - A320 - GENERIC JACK/COWL STANDS



For complete information visit us on the web at www.maynards.com

AIRCRAFT SUPPORT EQUIP.

THRUST Reverser Dollies • B767 Pylon Stands • B767 Fan Cowl Stands • **CORE** Cowl Stands • (12) **MALABAR** Complete Set of Jack Stands for 767 w/ Nose, Wing, Tail Stands • Large Qty of Cargo/Airframe Access Stands • (2) Wing Tank Drain Carts • **MALABAR** Set of Jack Stands for the A320/A330/A340 • Large Qty of Fiberglass Step Ladders • Large Qty of Airframe Support Equipment w/High Capacity Floor Jacks, Work Lights, Spill Kits, HEPA Vacuums, Extension Cord Reels, Exhaust Fans, etc. • Large Qty of Assorted Material Carts • **AMS** Hydraulic Pump Cart • (4) **JETPOWER** PWM2 400HZ Ground Power System Carts • (4) Mobile Engine Stands • (2) Reverse Thruster Stands • (3) A320 Cargo Access Stands • 737 Complete Jack Set • Engine Removal Gantry • A320 Wing Docks • Engine Stand • (6) Assorted Pressure Washers

WING STANDS

(2) **BURRARD MECHANICAL** Wing Stands • 747/DC 10 Permanent Scaffolding • (2) A320 Tail Docks • A320 Entry Stands



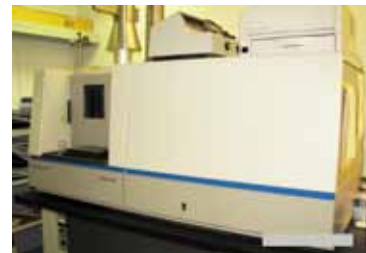
MOBILE / GROUND SUPPORT EQUIPMENT



(6) GENIE GS-2646 Scissor Lifts • YALE ERC050 4800# Electric Forklift "EE" Certified • (2) Forklift Safety Cages • TOYOTA 42-GFGCU25 3500# LPG Forklift w/189 Lift • CLARK TA 30F Propane 3000# Tugger • HYSTER H155XL 15,000# Forklift w/8600hrs, Dual LPG Tanks • INTERNATIONAL HARVESTER T300-SL Diesel Tugger • 2006 JLG E600JP 60ft 500# Zoom Lift • TAYLOR DUNN Electric Utility Carts • Assorted Electric and LPG Forklifts and Order Pickers



TEST EQUIPMENT, AVIONICS, GAS, BATTERY TEST



STRUCTURES DEPARTMENT



BROWN AND BOGGS No. 773 8' Mechanical Shear • **CHICAGO** 62-PB 4' Mechanical Brake • **BROWN AND BOGGS** No. 189 6' Mechanical Shear • **EDWARDS** TrueCut 8' 3.25 Shear • **BROWN AND BOGGS** S44 Manual Metal Former • **1988 ACCURPRESS** 717510 Press Brake • Qty of Manual Metal Fabricating Equipment • Qty of Arbour and Manual Presses w/Roll Formers, Grinders, Vises • Large Qty of Brake Dies • **CHICAGO** 4' Manual Brake • **RK MACHINERY** 50 Ton Shop Press

MAINTENANCE DEPARTMENT



Tool and Cutter Grinder • **DOALL** Manual Surface Grinder • **JONES & SHIPMAN** Centerless Grinder • **CLAUSING** 15" Shop Lathe w/2" Bore, DRO • **COL-CHESTER** Mascot 1600 Shop Lathe w/3" Bore, DRO • **MAZAK** Quickturn 15 CNC Lathe, s/n 60631 • **LIAN FENG** LF-BS12SP 12" Horizontal Band Saw • **DOALL** 2013-20 36" Throat Vertical Band Saw • **FIRST** LC-20VSG Turret Mill w/3-Axis DRO, Power Table • **BOKO** Universal Mill w/DRO • **MODERN** B-6GAV Turret Mill w/3-Axis DRO, Power Table • Large Qty of Indexing Heads, Tooling, Setup Blocks • (6) **GENIE** GS-2646 Scissor Lifts • Large Qty of Raw Material • **KING** 9"x18" Horizontal Band Saw • **KING** 21" Wood Vertical Bandsaw • **BIRLEFCO LINDBERG** Heat Treat Oven • **PARK** Chemical Heat Treat Oven • **PYRADIA** Heat Treat Oven • **MILLER** Syncrowave 351 Welder w/Cooler

HEAT TREAT, SANDBLAST, PAINT SHOPS

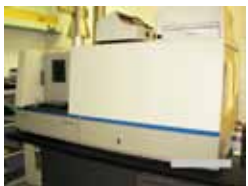


COMPOSITE SHOP

ATACS 8024-2 Hot Bonder Controller • ATACS 8010 Hot Bonder Controller • (4) APPLIED HEAT A150 Hot Bonder Controller • Heating Blankets • BUSY BEE Planer and Jointer • BUSY BEE Table Saw • Vertical Bandsaw w/ 24" Throat • Curing Ovens • Vertical Bandsaw w/24" Throat • Assorted Woodworking Hand Tools w/Sanders, Drills, Heat Guns, Clamps, Etc.

CALIBRATION ROOM

Shop Press • TENNY Heat Treat Oven • METTLER TOLEDO Digital Scale • WEBBER Gage Block Set • Set of Micrometers from 1" to 12" • STARRETT Sigma Optical Comparator • View of Assorted Variable Power Sources, Oscilloscopes, Test Equipment • NORBAR Torque Tester • NORBAR Torque Tester • SHURLIFT Shop Press • PACIFIC Scale • SMITH INDUSTRIES Automatic Control Unit



LAB EQUIPMENT

FISHER SCIENTIFIC 93-409sq Safety Flow Fume Hood • Set of PYREX Beakers • BARNSTEAD Water Filtration System • Assorted Lab Equipment • THERMO JARRELL ASH Atom Scan 25 Sequential Plasma Spectrometer • 4-Station Mixer



FILTRATION ROOM

PH Reader • AVERY FILTER CO. Filter Press • Assorted Tanks



WHEEL SHOP



(2) AIRPLUS Station Blast Booths • EMPIRE 48 ITT Automated Blast Station • BNP 50-6 Blast Cabinet • PROCECO Typhoon 26-36E Washer • PROCECO Typhoon Express Washer • Custom Wheel Coating Line • 1991 SCHAFFER-MASCHINEN Universal Bead Breaker • Shop Press w/Pneumatic Punch • WAYNE FORGE Heat Treat Oven • ENERPAC 50 Ton Shop Press • AERCOLOGY Down Draft Table • BAUER Tire Inflation Cages • BAUER Automated Lug Nut Station • ANDEC Elotest PL300 Wheel Testing Station • MAGNAFLUX Test Station • PEEN-A-MATIC Shot Peening System

Auction 2: **Wed & Thurs, Aug. 22 & 23
10am Each Day (EDT)**

Location: **720 Boulevard de la Côte-Vertu
Dorval (Montreal), QC**

Preview: **Tues, Aug. 21 from 9am-5pm**

Contact: **Mike McIntosh 416-242-3560**



**DIRECTIONS: ONLY 10 MINUTES FROM PIERRE ELLIOT
TRUDEAU INTERNATIONAL AIRPORT** Take Autoroute 40 towards
Montreal; Take exit 4 toward Laval/Lachine/Autoroute 13/Montée de
Liesse; Take exit 6 for Autoroute 40 toward Québec; Turn right onto
Montée de Liesse; Take the 1st right onto Boulevard de la Côte-Vertu

AIRBUS A310 TOOLING

Bootstrap Kit w/Cowl Hold Open Supports • Vertical Stabilizer Sling • CF6-80C2
Sling • Control Surface Protractor • T/R Cowl Sling



EMBRAER TOOLING

(3) **REGENT** 50 Ton Hydraulic Aircraft Jacks •
EMBRAER 175/190 Tow Bar • **EMBRAER** 50
Ton Tripod Jack

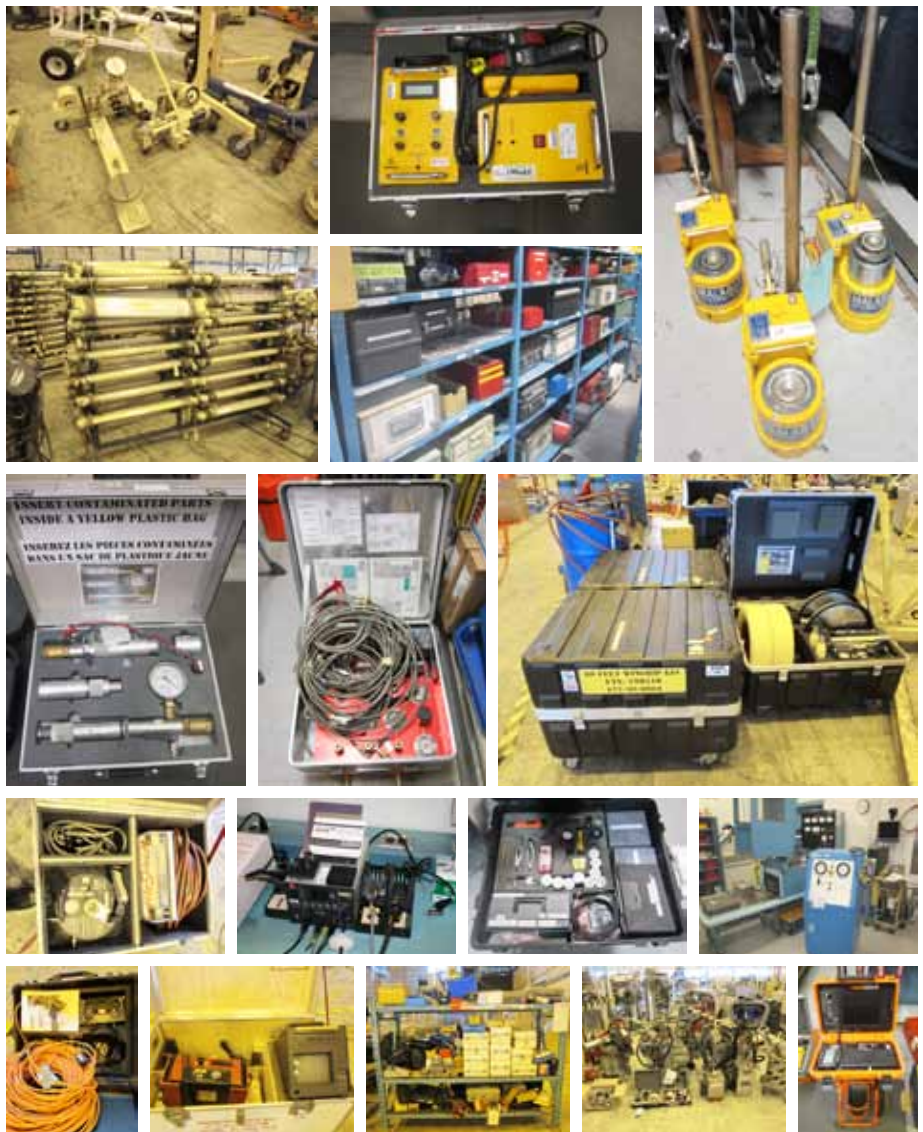
COMPLETE SET OF AIRBUS A330/A340 TOOLING

MLG Handling Spring • **ENERPAC** Hydraulic System • **MLG** Lifting Beam • **MLG** Spring Compressor • **MLG** Shock Absorber • **FLAP TRACK** 2, 3, 4, 5
Hoisting • **COMPRESSION MLG** Tool • Landing Gear Change Hoist • Hoist System • Reactor Tube Set • **MLG** Positioning Table • **2006 HYCOM** 32700-62
• Hydraulic Hose Kit • Door Ballast Weight Kit • Lower Pivot Door Lifter • (2) Bootstrap Kits • **TMH** Airframe Part Holder • **NLG** R/I Kit • **TMH** Handling Pack
/ Exchanger • **TMH** Distance Strut - Frame 91 • **DEDIENNE AEROSPACE** Locating Tools, Rib 18 • T500 Engine Pedestals • Neutral Setting Tool • **CLG** R/I
Hoist Trolley • **APU** Hoist • Rat Cage • **TRENT** Boot Strap - Aft Mount • **TRENT** Boot Strap - Fwd Mount • **THS** Actuator R/I Set • Pylon Lifting Beams •
TRENT 700 Sling • Reactor Tube Set • Fan Cowl Safety Support • **MLG** Trolley Shackle • Optical Alignment Set • Pylon Hoisting Gear • **MLG** Door R/I Tool •
R/I Tool Slat PCU • Engine Mount Support • PCU Slat R/I • Pylon Lifting Beam • **APU** Stands • Nose Cowl Sling • R/I Remote Chiller & R/U • **THS** Actuator
R/I Set • Hydraulic Hose Kit • R/I Tool - Flap PCU • Nose Landing Gear Tool • Brace Hold Open Cowl • Sling System • Sling - R/I Hinged Cowl • **THRUST**
Reverser Cowl Sling • R/I THS Apron • R/I Fire Ext Bottles • Reactor Tube Set • **NLG** Stressing Fixture • **MLG** Side Stay Gag Tool • Gag Shock Absorber •
R/I - Drag Stay - **NLG** • Wheel Chocks • Rat Hose Supp. • Sling System • Lifting Gear - Thrust Reverser • **FLYAWAY** CFM56-5C Engine Change Kit • CFM56-
5C Engine Change Kit • Gag Bogie Beam • **TRENT** 500 Adapter Sling • Handling Pack / Exchanger • Bootstrap Kit • T/R Lifting Beam • Horizontal Stab Strut
• Engine Exhaust Mixer Sling • R/I Flap PCU • **APU** Hoist • Set of T/R Dummies • **MLG** Door R/I Tool • Tow Bar for A340 • Cradle R/I - Pack Exchanger •
Access Platform • Assorted Cradles • Assorted Slings • Pintle Pin R/I • A340 Pylon Trolley • A330 Pylon Trolley **[Further detailed at www.maynards.com]**



GENERAL AIRFRAME TOOLING

Gear Pylon Hoists • Hydraulic Floor Jacks (up to 95 Ton) • CO Tester • Assorted **MALABAR** Cradles • Hoists • Ass't. Pumps & Filters • (8) **WINGRIP** 40/60/80 ft. Kits • Pressure Temp Test Sets • (5) Fuel Venting Hose Kits • **CONSPACE** CDI-2000 Hardline Communication System • Ass't. **ENERPAC** Hyd. Sets • Assorted Gauges/Adapters/Hand Tools • (100+) Work Lights • **HEPA** Vacuums • Hyd. Testers • Pumps • Pallet Racking • CO Test Kit • Air Tools • (3) **MALABAR** Hyd. Jacks • Ass't. Airframe Tooling • **POWERDRAWER II** Vertical Drawer Storage System • **GENERAL** Gen-Eye SD Video Snake • **AIR-BUS** B Loop Resistance Tester • Large Qty of Volt Meters, Tester • Large Qty of Sockets, Hole Saws • Large Qty @30 of Torque Wrenches • Vacuum Tester • Igniter Tester w/Qty of Slings • Large Qty of **LISTA** Cabinets • Large Qty of Air Tools • Crimpers, Wire Cutters, Insertion & Extraction Tools, Wire Strippers, Fall Restraint Harness • Conditioned Air Cart for 767 • **MALABAR** 793N 100 Ton Tripod Jack Set • **MALABAR** 8841 116 Ton Tripod Jack Set • **MALABAR** 8760 30 Ton Tripod Jack • **TECH-MAN** Tripod Jack Set • **BAUER** Hyd. Ground Power Unit • **MALABAR** 3761 10 Ton Tripod Jack • 6000psi Hyd. Ground Power Unit • **SUNDSTRAND** 5000psi Hyd. Power Unit • **REGENT** 100 Ton Tripod Jack Set



GROUND SUPPORT EQUIPMENT

2008 **STEWART & STEVESON** GPU400/100 2000KW General Power Unit, s/n 46782771 • **AIR-A-PLANE** H6600D Heating Unit • **KLEEN GUARD** Portable Pressure Washer • Portable Flush Cart • Lavatory Service Cart • Large Qty of Air Hose, Power Cord, Work Lights • **HYCOM** HFK02 Rat Flow Control Kit • Rat Flow Control Kit



SEP ALBRET POURTEAU COMPLETE WIDE BODY MAINTENANCE DOCKING SYSTEM

1999 SEP Maintenance Portable Platform System for Wide-Body Aircraft with light alloy docks, anti skid aluminum flooring, all adjustable railings, All docks w/ Stabilizing jacks, all docks have utility networks and hydraulic systems including compressed air and electrical distribution, motorized external wing and PHR docks, crane supported over-head work platforms **[Drawings available at www.maynards.com]**



WING STANDS

Wing and Tail Stand • 2002 ENDURON INC C02000 A319/A320/A321/B737 Wing Stand, s/n E02-909L • 8'x10' Lift Platforms • Large Qty of Production Stairs • Large Qty of PLATOLIFT Cargo/Airframe Access Stands



OVERHEAD CRANES

CLEVELAND Tramrail 10 Ton Overhead Crane with Adjustable Height Work Platform w/Approx. 250' Span • CLEVELAND Tramrail 10 Ton Overhead Crane w/Approx. 250' Span • SPACEMASTER 1 Ton 30' Span Overhead Crane



RACKING



Misc. Tube Racking/Material Carts • 80'x25' Row of Cantilever Material Racking • Qty of Pallet Racking • Ass't. Parts Shelving, Storage Racking

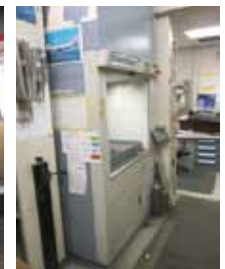
MOBILE EQUIPMENT

(4) SKYJACK SJ-111-3220 Scissor Lifts • (2) SKYJACK SJ-111-3219 • (5) GENIE GS 26/46 • (4) GENIE GS 19/30 • (2) SKYJACK SJ-111-3224 • (4) SKYJACK SJ-1007-20EE • 2005 JLG 20DVL Manlift • GENIE GS 20/32 • GENIE Z-45/25J • JLG 35 Electric 35' 500# Boom Lift • 2007 GENIE S-65 65' 500# Boom Lift w/1655hrs, s/n S6007-15625 • 2006 GENIE Z34/22M Boom Lift w/475hrs, s/n Z34N06-5379 • 2005 GENIE Z-45/25J Boom Lift w/2250hrs, s/n Z452505-25563 • GENIE Z-45/25J Boom Lift • BRODERSON IC-200-1C 30,000# Mobile Crane w/1066hrs, Raco Digital Scale, s/n 104218 • 1997 FORD F350 Crew Cab Scissor Lift Truck w/Plafolift 800# Lift • HYSTER S50XL 5000# Forklift • TAYLOR DUNN Electric 4-Seat Cart • CLARK FCT30 Propane Tow Cart, s/n G408 • YALE GLP100M 8650# LPG Forklift, 1600hrs, s/n C813D03017Y • MOTREC Electric Utility Cart • (3) MOTREC Electric Utility Carts • YALE ERC60 5000# Electric Forklift, 164 Lift, s/n E108V12484X • HUFF Tow Tractor • RAYMOND Electric Pallet Jack • TENNANT 7200 Ride On Floor Sweeper w/1450hrs • HYSTER H80XL2 7700# LPG Forklift w/172" Lift, 2690 hrs



MAINTENANCE / FABRICATION EQUIPMENT

CHICAGO 4' Hand Brake w/Pexto 4' Hand Shear • **IBARMIA** TL-25 Gear Head Drill • Large Qty **VIDMAR** Cabinets • Large Qty of **JUSTRITE** Flammable Storage Cabinets • (2) **DEVILBISS** Down Draft Booths • Mechanics Jacks • Work Benches • **ELLIS** 1800 12" Horz. Band Saw • **TRAYTOP** Engine Lathe • 50 Ton Shop Press • **DELTA** Combo Sand/Grinder w/Dust Collector • **DELTA** Drill Press • **KING** Table Saw • **MILLER** Syncrowave Welder • **ESAB** MigMaster 250 Welder • **DEVILBISS** 15x40x8' Spray Paint Enclosure • (3) **SPECTRATHERM** 4000s Portable UV Drying Lights • (2) **GRAYCO** Airless Paint Mixers • **TORIT** 12x10x8' Downdraft Spray Booth • Assorted Paint Mixers, Pumps, Guns • **DAREX** XT3000 Tool Sharpener • **HYD-MECH** S10 Horizontal Bandsaw, s/n W0998137 • **JACK MILL** J40 Tool Grinder • **KONDIA** Powermill FV-1 Turret Mill w/3-Axis DRO • **CA-ZENEUVE** 360HV-X Engine Lathe w/2-Axis DRO, 2" Spindle • **MICROWEILY** TY-1860TS Engine Lathe w/2-Axis DRO, 3" Spindle • Misc. Lathe Tooling, Collets, Faceplates, Dividing Heads, Precision Vises, End Mills, V-Blocks, Clamps, Heli Coil Kits, Shims, Etc. • **ACCUTECH** 2500M Universal Mill w/3-Axis DRO, 250# Electric Hoist, s/n 1088148 • **2007 EUMEGA** MDV4.5 Turret Mill w/3-Axis DRO, Power Table • Micrometers, Misc. Test Equipment • **TOS** VS32E Gear Head Drill • **ALL STEEL** 10G-4 Hyd. Shear w/Digital Controls, s/n M-101273 • **RACK ENGINEERING** 5-Section Pull Out Material Rack w/2000# Cap. per Section • **DECKEL** Pantograph • Large Qty of Bushings, Gauges, Small Tooling for Aircraft • **WIEDEMANN** RZ41M Rotary Turret Punch • **RK MACHINERY** 30 Ton Shop Press • **PEXTO** Corner Knocker • **PEXTO** Hand Punch • **ALL STEEL** 25-4 4' 25 Ton Hyd. Brake, s/n 72082 • Large Qty of Ass't. Brake Dies • Misc. Drill Presses, Cleat Folders • **CINCINNATI** 90CB 8' 90 Ton Hyd. Press Brake, s/n 47006 • **2004 GASPARINI** CO 3704 12' Shear w/4.6mm Cap., s/n 1789.1510 • **TORIT** Down Draft Table • **PEXTO** Plate Rolls • **STARTRITE** • 20 RWS Vert. Bandsaw • **ECKOLD** Piccolo Punch • **DOALL** 3613-1 36" Throat Vert. Bandsaw • **TORIT** Dust Collector • (2) Combo Sand/Grinder • **KING** Spindle Sander • Portable Dust Collector • Shot Blast Cabinet • **WILTON** Drill Press • **IMET** Cold Cut Saw • (3) **BALDOR** Dbl End Grinders • Parts Crib w/Ass't. Measuring Equipment, Testers, Precision Tooling, Specialized Job Boxes, Precision Fasteners, Air Tools • **SPACEMASTER** 2 Ton Overhead Crane w/40' Span • **TORIT** 10x40' 10-Section Spray Booth • **BOSCH** Router Table • **DOALL** 36" Throat Vert. Bandsaw • **HOLZHER** 1265 Supercut Vert. Panel Saw • **GENERAL** 15-250M1 Planer • (2) **TORIT** Dust Collectors • **NIAGARA** 18 Gauge 10' Mechanical Shear • **MEC ART** 30x40'x9' Modular Clean Room • (5) **TRISK** UV Drying Lights • **2002 PYRADIA** 450°C 10'x30' Curing Oven



CHILLER ROOM

B/E AEROSPACE R134A Coolant Flushing Station, s/n 4014-001

TOILET ROOM

ROUSSAU 29S Sonic Washer • **R&M** 1.5 Ton Crane w/30' Span • **JET POWER** 400HZ Ground Power System, s/n ED-5113

FABRIC SHOP

GERBER S3200 CNC Fabric Cutting Table • **ROLAND** SolJet ProlIV Large Format Printer • **MIMAKI** CF2-0912 Router Table • **NEBLAM** 1100-ee Laminator

COMPOSITE SHOP

DENRAY Down Draft Sanding Table • **DELTA** Mitre Saw • **DELTA** Combo Sand/Grinder • **GENERAL** Vertical Bandsaw • **GRECO** Heat Lamp Vacuum Applicator w/5'x7' Cap.

PLUMBING SHOP

FLUKE 8845A Precision Multimeter • **SORENSEN** DCR 40-13B Power Supply • **BK PRECISION** 1730A 30V/3A DC Power Supply • **PACE** MBT SensaTemp Soldering Iron Controller • **SCIENSCOPE** IL-F01-150plus Fiber Optic Illuminator • **BAUSCH & LOMB** StereoZoom 4 0,7x-3.0x Stereo Microscope • **WAVETEK** Mod. 19 2Mhz Sweep/Function Generator w/HeathKit Mod. IN-11 Decade Resistance Controller • **SORENSEN** QSB28-8 Power Supply • **YAMATO** DX602 Drying Oven • (2) Crimping Machines • **CANADA GENERAL ELECTRIC** 1100°F Heat Treat Oven • **FAMCO** 5CR Arbour Press • **LINDBERG** 1600°F Heat Treat Oven • (2) **PYRADIA** P10P038038038HMTXB 1250°F Heat Treat Ovens • **ROCKWELL** Hardness Tester



SEWING ROOM / OVEN ROOM

SINGER 591 Sewing Machine • **SINGER** Singer 211 Sewing Machine • **JUKI** LU-563 Sewing Machine • **SINGER** 842 • **JUKI** LU-563 • **SINGER** 211 • Ass't. Variable Power Sources • Test Oven Bench w/Variable Power Sources, Precision Thermometers, Test Ovens, Temp. Controllers



AS APPROVED BY THE QUEBEC SUPERIOR COURT

4 DAYS
2 LOCATIONS

PUBLIC AUCTION

AUCTION #1 ~ VANCOUVER

Aug. 15 & 16, 2012

**6001 GRANT McCONACHIE WAY,
RICHMOND, BRITISH COLUMBIA**



**AVEOS FLEET
PERFORMANCE INC.**
(AIR FRAME DIVISION)

Maynards Industries

250 H Street
PMB 207
Blaine, WA 98230

AUCTION #2 ~ MONTREAL

Aug. 22 & 23, 2012

**720 BOULEVARD DE LA CÔTE-VERTU
DORVAL, QUEBEC**

For Further Details or to Arrange a Pre-Inspection Please Contact
Mike McIntosh at 416-242-3560 or mmcintosh@maynards.com



**MAJOR TOOLING &
MRO SPECIFIC ASSETS
AVAILABLE FOR PRIOR SALE**

Visit www.maynards.com for Details

BID LIVE, ON-LINE! REGISTER AT EITHER



Hilcast™ Webcast Auctions
Bringing Industrial M&E Auctions to You *Live!*

AUCTION TERMS & CONDITIONS | **PAYMENT:** 25% NON-REFUNDABLE DEPOSIT ON AWARD OF BID, BALANCE WITHIN 48 HOURS. PAYMENT IS CASH, CASHIER'S CHECK, CERTIFIED CHECK, WIRE TRANSFER, COMPANY CHECK ONLY IF ACCOMPANIED BY A LETTER FROM YOUR BANK GUARANTEEING AMOUNT OF CHECK FOR DEPOSIT AND/OR PAYMENT IN FULL. NO PERSONAL CHECKS. FULL PAYMENT MUST BE MADE BEFORE REMOVAL OF PURCHASE. **REMOVAL:** LAST DAY OF REMOVAL IS FRIDAY, SEPTEMBER 21, 2012. AND AS FURTHER DEFINED IN THE SALE CATALOGUE. EVERYTHING IS SOLD "AS IS, WHERE IS." ALL SALES FINAL. COST AND RESPONSIBILITY FOR REMOVAL OF PURCHASE REMAINS WITH THE PURCHASER. EVERY EFFORT WILL BE MADE TO FACILITATE REMOVAL. WHILE QUANTITIES AND DESCRIPTIONS ARE BELIEVED TO BE ACCURATE, THE AUCTIONEER, OWNERS OR COUNSEL MAKE NO WARRANTIES OR GUARANTEES EITHER EXPRESSED OR IMPLIED AS TO AUTHENTICITY, GENUINENESS OF, OR DEFECTS IN ANY LOT AND WILL NOT BE HELD RESPONSIBLE FOR ANY ADVERTISING DISCREPANCIES OR INACCURACIES. NO WARRANTIES WHATSOEVER ARE MADE AS TO CONDITION, MERCHANTABILITY OR FITNESS FOR USE OF ANY ITEM. MAY WE SUGGEST YOU TAKE FULL ADVANTAGE OF THE PREVIEW AND INSPECTION PERIOD | **SALE SUBJECT TO ADDITIONS, DELETIONS & PRIOR SALES. PLEASE CHECK AVAILABILITY OF EQUIPMENT** | **BUYERS PREMIUMS: 15% ON-SITE, 18% ON-LINE** | **ALL SALES IN CANADIAN FUNDS**

SALE CONDUCTED BY

Maynards
Industries (1991) Inc. SINCE 1902

AUCTIONS | LIQUIDATIONS | APPRAISALS

75 International Blvd. | Suite 102

Toronto, ON M9W 6L9 | Tel: 416.242.3560

www.maynards.com

Hilco Industrial, LLC
Auctioneers • Liquidators • Appraisers

31555 W. 14 Mile Road | Suite 207
Farmington Hills, MI | 48334

T. 248.254.9999 | F. 248.254.9995

www.hilcoind.com

IN CONJUNCTION WITH

pplgroup™
distressed asset solutions



Heritage Global Partners



**COUNSEL
RB CAPITAL LLC**
PARTNERS IN SUCCESS™