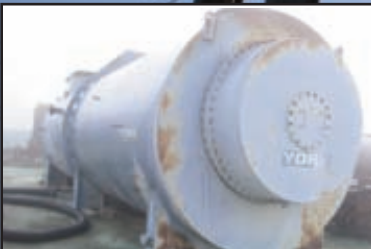


Hilco Industrial, LLC & Heritage Global Partners LIQUIDATION



Millions of Dollars Worth of Electrical and Mechanical Spare Parts, Tools and Much More



Bulk Bid Deadline: April 29th Multiple Locations in California

Sale conducted in partnership with



Heritage Global Partners

Asset Advisory and Auction Services

A Legacy since 1937

www.hgpauction.com

Hilco Industrial, LLC

Auctioneers • Liquidators • Appraisers

31555 West Fourteen Mile Road, Suite 207

Farmington Hills, Michigan 48334 USA

Ph 877-37-HILCO (44526) • Fx 248-254-9995

www.hilcoind.com

Hilco Industrial, LLC & Heritage Global Partners



Millions of Dollars Worth of Electrical and Mechanical Spare Parts, Tools and Much More

BID DEADLINE

MONDAY, APRIL 29TH

PREVIEW

BY APPOINTMENT ONLY

CONTACT DAVID BARKOFF AT 650-649-0147 OR EMAIL
DBARKOFF@HGPAUCTION.COM

EQUIPMENT INFORMATION

CONTACT DAVID BARKOFF AT
650-649-0147 OR EMAIL
DBARKOFF@HGPAUCTION.COM



Partial Listing Only, Please visit www.hilcoind.com or hgpauction.com for Complete Lot Catalog and Bidding Procedures



**HANFORD, CA LOCATION
(Lots 1000 Thru 1038)**

Pipe Fittings, Gear Boxes, Belts, Rims, Gear Drives, Rotary Seal Feeder, Turbine Parts, Cycloblowers High Efficiency Motors, Thermal Water Cooled Heat Exchanger, Steel Fittings, Sew Eurodrives, Welders, Quantity of Motors Up to 500 HP, Fan Covers, Plumbing Materials, Pumps, Transformers, Frequency Drives, Gear Reducers, Compressors, Arc Welders, Boiler Heater Coils/ In Bed Tubes, Tanks, Steam Deaerators, Fan Blades, Condensers, Assorted Sizes of Gate Valves, Centrifugal Blowers, Scrap Metal, Blower Casing, Spare Parts, Miscellaneous Metal Framing Etc.



**HANFORD, CA LOCATION
(Lot 1042)**

(50) Assorted Circuit Boards, Consisting of Allen Bradley, Etc.



**HANFORD, CA LOCATION
(Lots 1039 Thru 1041)**

Seal Packing and Supply, Assorted Seals, Spare Parts, Electronic Components, Valves, Fittings, Lock Washers, Blocks, Transformer Currents, Transmitters, Transducers, Studs, Sealing Shafts, Sock Outlets, Screws, Nuts, Bolts, Skirting, Gaskets, Storage Shelving, Etc.



Millions of Dollars Worth of Electrical and Mechanical Spare Parts, Tools and Much More



ARMONA, CA LOCATION (Lots 1100 Thru 1185)

High Pressure Turbines, Generator, Lube Oil Supply Unit, Support for Oil Cooler, Oil Vapor Fan, Oil Cooler, Structural Pipe Supports, Air Ejector Packages, (3) Crates of Sound Enclosures, Low Pressure Turbine, Steam Bypass Water Spray Assemblies, Fan Motor, Water Pumps, Blowers, Plunger Pumps, High Efficiency Duty Master to 125 HP, Motors to 800 HP with Pumps, XE AC Duty Master 60 HP Motors, Quantity of Motors to 50 HP, Vertical Pumps, Heat Exchangers, Flash Tanks, Isolation Control Dampers, Turbine Gearboxes, Feed Pump, Gear Heads, Valves, Base Frame for Water Pump and Motor, Electric Level, Fluid Power Attachments, SMC Air Valves, High Pressure Boiler Feedwater Heaters, Electrical Cabinet, Condenser Leak Off, Variable Frequency Drives, Miscellaneous Spare Parts, Etc.



MINTER FIELD, CA LOCATION (Lot 1500)

Air Heater Inlet 6500#, Economizer Hoppers 10,214#, Steam Drum 65,000#, Inlet Plenum Duct 51,906#, Inlet Plenum Duct 44,500#, Inlet Plenum Duct 4,113#, Economiser 112,129#, Air Heater 163,966# Secondary Convection Unit 157,549#, Primary Convection—Upper 102,050#, Primary Convection—Lower 98,464#, D.A. Tank—(Two Pieces) 28,000#-(Both Pieces), F.D. Fan (Housing Only) 6,500#-(2 Pieces), Standard Truck, + Miscellaneous Pieces, I.D. Fan (Housing Only) 9,800# - (2 Pieces) Drop Deck, Start-Up Burner 49,500#, Assorted Piping 48,000#



ANTIOCH, CA LOCATION (Lots 1200 Thru 1256 & 1285 Thru 1287)

Generator, High and Low Pressure Turbine Rotors, Fan Motor, 1500 HP Line Motor, Welding and Cutting Arc Welding Unit, Arc Welders, Blast Cabinet, Precision Oven, Dry Rod Electrode Stabilizing Oven, Miter Band Saw, Storage Cabinets including Screws, Nuts, Bolts, Washers, Pipe Fitting Materials, Bench Grinders, Tape Writer, Drill Press, Feed Pump Rotor, Generator, 500 HP Induction Motor, Energy Saver AC Motors to 450 HP, Rotary Lobe Blowers, Gear Boxes, Blowers, 100 HP Motor, Gear Boxes, Assorted Valves, Gear Reducers, Power Circuit Breakers, Assorted Rubber Belts, Dust Bags, Gears, Fan, Assorted Motors, Siemens Rogard Parts, General Electric Bags, Rubber Guards, Gears, Gear Systems, Pipe Fittings, Pallet Racking, Martin Engineering Equipment, Thermal Heat Exchanger, 10 Ton Capacity Overhead Crane (Crossbeams Only), 55 Ton Hydraulic Press, Etc.



ANTIOCH, CA LOCATION (Lots 1257 Thru 1284)

Quantity of Motors 1/4 HP to 5 HP, Wag W21 Severe Duty 3 PH Motor, Assorted AB AC Drives, (41) Sections of Shelving with contents, ESV Valve Head, Mezzanine with Stairs, Contents of Shelving Located on Mezzanine, Etc.



ANTIOCH, CA LOCATION (Lots 1300 Thru 1325)

Screw Feeders, Screw Conveyors, Tool Boxes, 40' Steel Containers with Contents, Dehumidifier, Fan Blades, Piping, Furniture, Boiler Heaters and Weights, Water Treatment Skid, Machine Process Design Inc. with Motor and Electrical Panel, Trailer and Feeder Mixing Unit, Assorted Trailer Units, Entire contents of Cage, Transformers, Air Compressor, High and Low Pressure Turbines, Assorted Spools of Wiring, Band Saw, Miscellaneous Equipment, Etc.





LIQUIDATION



Millions of Dollars Worth of Electrical and Mechanical Spare Parts, Tools and Much More



Bulk Bid Deadline: April 29th
Multiple Locations in California

HILCO Industrial, LLC is a division of Hilco Trading, LLC • Headquarters 5 Revere Drive, Ste. 206 • Northbrook, IL 60062 • All rights reserved
Printed in USA • GWF0100 • IL License #444.000215 • Please visit our website at www.hilcoind.com to review our complete terms and conditions.

Terms of Sale

An 18% buyer's premium will be charged on all assets. The buyer's premium will be reduced to 15% for payments made by cash, company check or wire transfer. Everything will be sold to the highest bidder for cash, in accordance with the Auctioneer's customary "Terms of Sale", copies of which will be posted on online. All items will be sold "as is, where-is" without any warranties, expressed or implied. Although obtained from sources deemed reliable, the Auctioneer makes no warranty or guarantee to the accuracy of the information herein contained. Bidders are encouraged to thoroughly inspect the items on which they intend to bid prior to sale. Absolutely no items will be removed until the day after the conclusion of the sale and payment is made in full. Subject to additions, deletions and prior sale. For updated information, please visit our website at www.hilcoind.com for any date, sale process, terms and conditions and list of available assets.

Payment: ALL PURCHASES MUST BE PAID IN FULL ON THE DAY OF THE AUCTION. If you intend to pay by wire transfer, we will accept payment the day after the sale ONLY IF a deposit of 25% of total purchases is made on the day of the sale. Contact our office for wire transfer instructions. Only cash, wire transfer or certified check, payable to Heritage Global Partners, Inc. will be accepted. Company checks payable to Heritage Global Partners, Inc. will be accepted only if accompanied by a bank letter of guarantee, (see sample letter below). All sales are subject to sales tax. Purchasers claiming exemptions from taxes must provide proof satisfactory to the Auctioneer of their entitlement to claim such exemptions.

Sample Bank Letter

(Bank Name) unconditionally guarantees payment to Heritage Global Partners, Inc. from (Company Name). This guarantee will be valid for purchases made at the Auction of GWF on April 29, 2013.

