

GLOBAL WEBCAST AUCTION

STARTING: April 4, 10:00 am **ENDING:** April 4, 12:00 pm CDT



***No Longer Required by SemiSouth Laboratories, Inc:
Major Webcast Offering of Late Model Silicon Carbide
Semiconductor Manufacturing and Test Equipment***

Under the Instruction of:

SemiSouth Laboratories, Inc.

AUCTION DATES:

Starting: April 4, 2013 – 10:00 am CDT

Ending: April 4, 2013 – 12:00 pm CDT

AUCTION & PREVIEW LOCATION:

201 Research Boulevard, Mississippi State University
Starkville, MS 39759, USA

PUBLIC INSPECTION:

Wednesday, April 3rd, 2013

9:00 am – 4:00 pm Local Time or by appointment.

AUCTIONEER'S NOTE:

HGP is pleased to be selected to conduct this Global Webcast Auction for SemiSouth Laboratories, Inc..

This Global Webcast Auction features Late Model Silicon Carbide Semiconductor Manufacturing and Test Equipment.

Please view our website at www.hgpauction.com for the bidding instructions and the full terms of the sale. Thank you for your interest, and we look forward to providing you quality equipment sales and World Class Service.

ADDITIONAL INFORMATION:

For more information including a photo gallery, equipment list, terms and conditions of sale and more, please visit www.hgpauction.com.

CONTACT:

Craig Thompson

Email: cthompson@hgpauction.com

Tel: +1.858.847.0658



Heritage Global Partners

ASSET ADVISORY AND AUCTION SERVICES

A Legacy Since 1937

A Counsel RB Capital Company

www.hgpauction.com

REACTORS • SCANNING MICROSCOPE



2011 AXITRON MODEL AIX 2800G4 WW, GAS FOIL ROTATION PLANETARY REACTOR

AXITRON EPIGRESS TYPE VP 2400 HW, GAS FOIL ROTATION PLANETARY REACTOR

GAS FOIL ROTATION PLANETARY REACTORS

1 – 2011 Axitron Model AIX 2800G4 WW, Gas Foil Rotation Planetary Reactor, S/N 1001 701401, with MKS 600 Series Digital Pressure Controller, Lextron Model Accufiber TR 200 Optical Fiber Digital Temperature Controller, Eurotherm Model 2704 Temperature Display, Siemens Simatic Digital Panel with Push Pad Controls, Foot Pedal Rotation Controls, Foot Pedal Vacuum Controls, Foot Pedal Pressure Controls, Monitoring Display, Axitron/Huttlinger Elektronik Tru Heat MF7150 RF Generator/Heater, and with Associated Manuals.



2009 JEOL MODEL JSM-6701F, FIELD EMISSION SCANNING ELECTRON MICROSCOPE

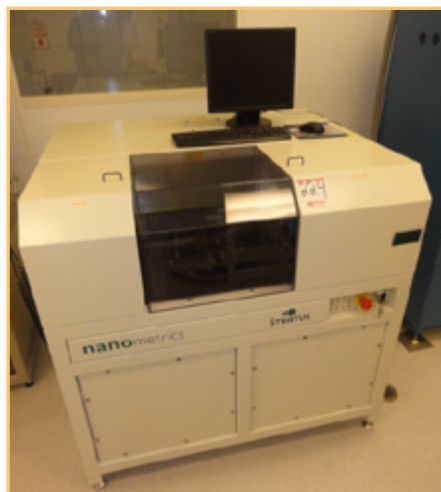
1 – Axitron Epigress Type VP 2400 HW, Gas Foil Rotation Planetary Reactor, with MKS 600 Series Digital Pressure Controller, Lextron Model 100C Optical Fiber Digital Controlling System, Eurotherm Digital Temperature Display, Dell Precision 370 Pentium Computer, (2) Dell 17" Flat Panel Monitors, Foot Pedal Controls, (2) Huttlinger RF Generator/Heater Controllers, Models BIG80/50, (1) Pure Air Systems Air Scrubber, Siemens Simatic OP17 Digital Display with Push Pad Controls, with Associated Manuals, S/N 1700112, and with Associated Manuals.

SCANNING ELECTRON MICROSCOPE

1 – 2009 Jeol Model JSM-6701F, Field Emission Scanning Electron Microscope, S/N SM67010BU, with Jeol Scanning, Alignment, Magnification, Focus X and Y, Contrast and Brightness Control, (1) Hewlett Packard Jeol Control Computer Model Z200 Workstation with Core IV Processor, (1) Jeol EDX Control Computer, with Core II Processor, (1) Infrared Chamber Scope Interface, (2) NEC Approx. 19" Monitors, (1) Oxford Instruments INCA X-ACT Camera System Model 51-ADD008, (1) Jeol MS USB Controller, (1) Jeol Ion Pump UPS, (1) Oxford Instruments INCA MICS FPlus, (1) Oxford Instruments INCA X-Stream-II, (1) Haskris Model R050 Water Temperature Controller with Digital Display, (1) Jeol Model G-100DC Vacuum Pump, with Associated Jeol Control Cabinet and Shipping Brackets. Installed March of 2011.



2007 TYSTAR MODEL MINI-TYTAN 4600, DIFFUSION FURNACE



NANO METRICS STRATUS, FTIR WAFER THICKNESS TOOL



2011 SPTS MODEL PRO CVD CHEMICAL VAPOR DISPOSITION MACHINE



SPTS CHEMICAL VAPOR DISPOSITION

EVAPORATORS • ALIGNERS • CURB TRACER • FURNACE • OVEN • ETCHERS

2004 STS PLASMA CHEMICAL VAPOR ETCHER



EVAPORATORS

2 – Sliim 50 E-Beam Evaporator, w/ Veeco Solus Ion Source Controller, Digital Touchpad Controls, Sycon Model EBS-530 Sweep Controller, Sycon Model STC-202 Deposition Controller, Dell PowerEdge 650 Integrated PC w/ HVPS/ SC Controller, Sycon Manual Power Incline Decline Handheld Control Pendant, Inficon Model CL-100 Digital Indexer

ALIGNERS

2 – 1997 Canon Model FPA-3000 14 Fine Pattern Aligner, w/ Reticle Holders, Digital Display, Push Panel Controls

CURB TRACER

1 – Sony Tektronix Model 371 High Power Curb Tracer w/ Tektronix Model 371A/371B Test Fixture, (1) HP Model 10833A Cord, (1) IEEE-488 GPIB Cord, (1) Dell Optiplex GX620 Pentium 4 Computer, (1) Computer Rack

DIFFUSION FURNACE

2 – 2007 Tystar Model Mini-Tytan 4600, Diffusion Furnace, 6" Tube, S/N 460107FUR, with Tystar Flat Panel Systems Monitor, Hewlett Packard Pentium IV Controlling Computer with Dell Approx. 19" Flat Panel Monitor with Pure Air Systems Model SDOC Air Scrubber with 150 to 200 Standard Cubic Feet Per Minute Continuous Ventilation Rate, Versamax DP Digital Display with Touchpad



1997 CANON MODEL FPA-3000 14 FINE PATTERN ALIGNER



2011 CENTROTHERM MODEL ACTIVATOR 150-50 ANNEALING OVEN

ANNEALING OVEN

1 – 2011 Centrotherm Model Activator 150-50 Annealing Oven, Project Number 1_52573.11, with Digital Display, Dell Precision T3500 Computer with Zion Processor, Dell 17" Flat Panel Monitor, Power Conditioner, Keyboard, Mouse, with Fujitsu Esprimo Computer with Core IV Processor, Dell 17" Flat Panel Monitor, Power Conditioner, Temperature Controller with Associated Manuals and Castered Rack. Includes (1) Alcatel Model A803 H Temperature Controller, (1) Ebara Model ESA80W-HDF Dry Pump



TENCOR INDUSTRIES P-11 SURFACE PROFILER



TENCOR INDUSTRIES LONG SCAN PROFILER

ETCHERS

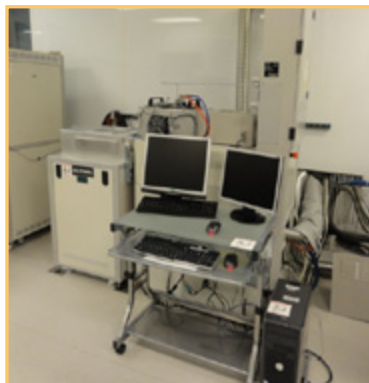
1 – 2004 STS Plasma Chemical Vapor Etcher, w/ Power Distribution Module, Cluster/Multiplex P.P.D., Mag Drive 1000, Adaptive Pressure Controller, Conductivity Digital Meter, Internal PC, 17" Flat Panel Monitor, (1) Affinity Chiller, Model RWA-012T-CE55CBD4, (1) ENI RF Generator, (1) Ebara Model AALIO Dry Pump, (1) Ebara Model AA10 Dry Pump, w/ Digital Display

1 – 2007 STS Plasma Chemical Vapor Auto Load Etcher, w/ Leybold Digital Mag Drive, (9) MKS Mass-Flow Meters, Integrated Computer, Dell Optiplex GX280 Pentium 4 Computer, (2) Approx. 17" Flat Panel Monitors, (2) Mice, (1) Keyboard, (1) ENI RF Generator, (1) MKS Spectrum RF Generator, (1) STS Model PEGASUS Electronics Rack w/ Switching Center and More!

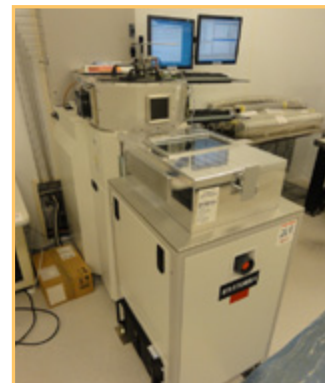
PROFILERS

1 – Tencor Industries Long Scan Profiler, Model 148679, w/ P-2 Handler, Integrated Computer w/ Touchpanel Controls, Keyboard, Up to 8" Chuck

1 – Tencor Industries P-11 Surface Profiler w/ Custom PC, Keyboard, 8" Chuck, 17" Flat Panel Monitor

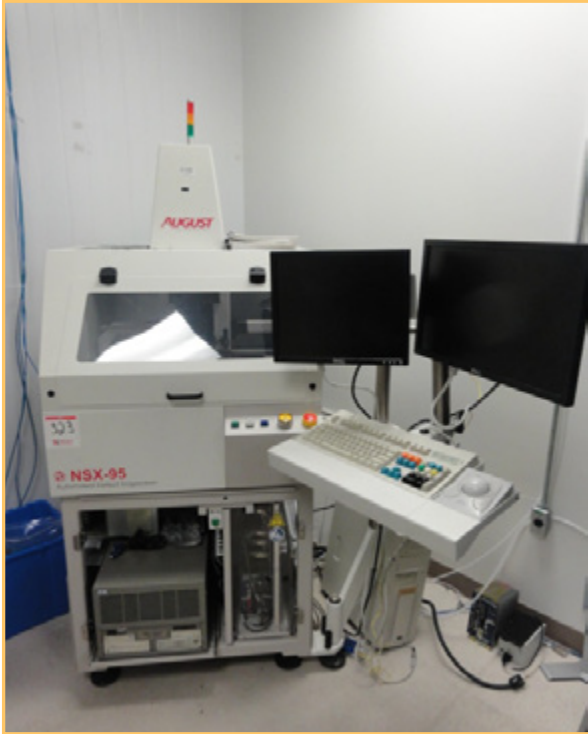


2007 STS PLASMA CHEMICAL VAPOR AUTO LOAD ETCHER



SPTS 2011 PLASMA CHEMICAL VAPOR AUTO LOAD ETCHER

INSPECTION • TEST SYSTEM • MICROSCOPES • MEASUREMENT



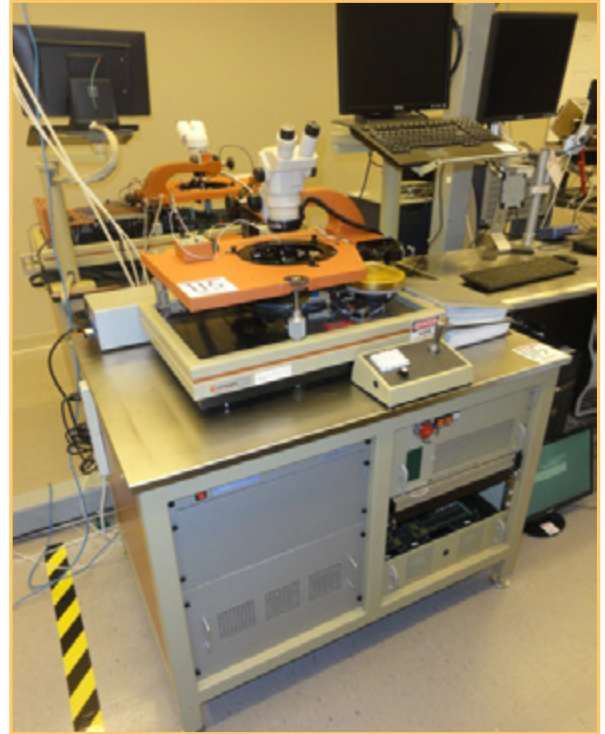
AUGUST TECHNOLOGIES MODEL NSX-95 AUTOMATED DEFECT INSPECTION

INSPECTION

1 – August Technologies Model NSX 95 Automated Defect Inspection Machine, w/ ICS Advant Optical Defect Computer Control, (1) August Custom Tool Controlling PC, (1) Dell 17" Flat Panel Monitor, (1) Dell Approx. 19" Flat Panel Monitor, Keyboard, Ball Type Mouse

TEST SYSTEM

1 – XC ASL Analog Test System, Model ASL-1000, w/ LT Xcredence Calibration Board ASL 1K CAL DUT, Type 1, Config 30, S/N 1000-PP00888, w/ Approx. 19" Flat Panel Monitor, Keyboard, Mouse, w/ Associated Disks & Test Boards



ELECTROGLAS MODEL 2001CXE PROBER



UNIVERSAL AXIAL INSERTION SYSTEM



2006 HITACHI MODEL/SERIES S-8840 SCANNING ELECTRON MICROSCOPE

MICROSCOPES

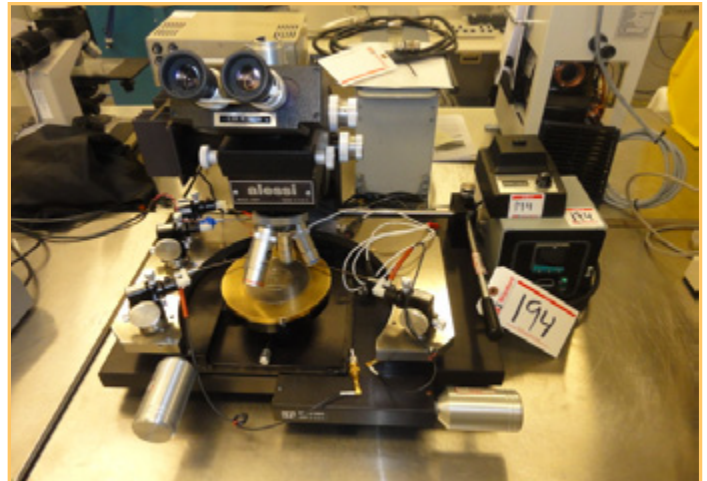
1 – Bausch & Lomb Probe Scope, Model REL-4100A, w/ (4) Alessi Probes, Low Temperature Heated Platform, Precision Slide Table, Elevating Table, Bausch & Lomb Light Source, Weneco Temperature Controller, 10X Eyepieces, 2.5X, 8X, 25X, 50X Objectives

1 – Motic Dual Head Stereo Adjustable Objective Training Scope, w/ Motic Model MLC-150C Adjustable Light Source, Internal Laser Pointer

2 – Nikon Stereo Zoom Microscope, w/ 10X Eyepieces, Adjustable Objective, Objective Adjusts Between .8 & 4X, w/ ring Style Light Source, Angle Table

1 – Olympus Stereo Zoom Microscope, Model BH2-UMA, w/ 10X Eyepieces, 5X, 10X, 20X, 100X Objectives, Built In Light Source, Olympus THG Light Source Voltage Control, Adjustable Sliding Table

2 – Zeiss Axitron Inspection Microscope w/ 10X Eyepieces, 5X, 10X, 20X, 50X Objectives, Allied Vision Technologies Camera, Model Marlin, Dolan Jenner Fiber Light Source, Model MI-157, High Intensity Illuminator, Slide Table, Adjustable Height, S/N 1192



BAUSCH & LOMB PROBE SCOPE, MODEL REL-4100A

MEASURING

1 – Karl Suss Model MA6 Contact Aligner, w/ 10X Eyepieces, 5X & 10X Objectives, Offset 25X Objectives, CCD Video Camera Module, Panasonic Video Monitor, Model WV-BM 1410, Suus Microtech Lamp Power Supply, Flatness Level Checker, Suss Controls, Pneumatic Isolation Table

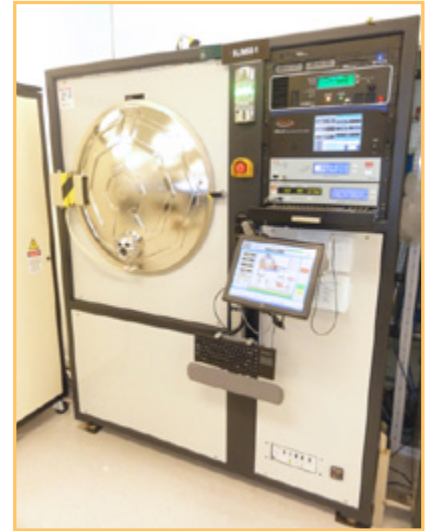
1 – Nanometrics Nano Spec/AFT 4000 Visible Thin Filmed Measuring Device, Model 72001821 REV B, w/ Olympus Microscope, 10X Eyepiece, 5X Objective, 10X Objective, 50X Objective, Nanometrics Controller, Transtec 1100 PC, 19" Flat Panel Monitor, S/N 0892-H1017

1 – Nanometrics Nano Spec/AFT Scope, for use w/ Measuring Thin Films, Model 010-0180, w/ Olympus Microscope w/ 10X Eyepiece, 40X & 10X Objective, Nanometrics Controller, Digitech Printer

1 – Optical Specialties Industries Video Line w/ CD Measuring Tool, Model VLS-1, w/ Nikon Microscope, (1) 10X Objective, (2) 40X Objectives, (1) 100X Objective, (1) Kohu Solid State Camera, (1) OSI Video Monitor, (1) OSI Push Pad Controller, (1) OSI Digital Terminal w/ Epsom Label Printe

PROBERS • SCANNER • DEPOSITION • WET BENCHES • OVENS

2006 TEMESCAL MODEL BJD-2000E-BEAM DEPOSITION SYSTEM



2006

TENNEY BI-T-060 38' X 12' WALK-IN OVEN

SLIM 50 E-BEAM EVAPORATOR



SVG8800 DUAL COAT TRACK SYSTEM W/ RESIST CABINET



2002 KLA TENCOR MODEL ILM2138 WAFER PATTERN DEFECT OPTICAL SCANNER



WAFAB INTERNATIONAL STAINLESS STEEL WET BENCH

PROBERS

- 1 – Bausch & Lomb Probe Scope, Model REL-4100A, w/ (4) Alessi Probes, Low Temperature Heated Platform, Precision Slide Table, Elevating Table, Bausch & Lomb Light Source, Wenesco Temperature Controller, 10X Eyepieces, 2.5X, 8X, 25X, 50X Objectives
- 3 – Electroglas Model 2001CXE Prober, w/ Electroglas Prober Control Module, Model PCM, Electroglas Vision Module, Model PRM-3, Electroglas Power Supply, Model PSM-B, Stereo Microscope, (1) Type Prober Controls, (2) Keyboards, 17" Flat Panel Monitor, Optem International Light Source
- 1 – 2005 SSM 495 Mercury Probe CV System for Solid State Measuring
- 1 – Veeco Instruments Model FPP-100 4-Point Probe

OPTICAL SCANNER

- 1 – 2002 KLA Tencor Model ILM2138 Wafer Pattern Defect Optical Scanner, w/ KLA Tencor Model 2138UI Operator Interface, w/ Joystick Controls & Keyboards, KLA Tencore Model 2138IS Wafer Scanning Unit, KLA Tencor Model 2138LS Power Supply, Make-Up Exhaust Blower

DEPOSITION SYSTEMS

- 1 – 2011 SPTS Model PRO CVD Chemical Vapor Deposition Machine for Oxide, Nitride, Deposition Layers, w/Coaxial Power Module, Integrated Computer, Gas Control Box
- 1 – SPTS Chemical Vapor Deposition Machine for Oxide, Nitride, Deposition Layers, w/ Advanced Energy Power Supply Unit Model LF10
- 1 – 2006 Temescal Model BJD-2000E-BEAM Deposition System, w/ Controller, Model CV-6SL, Controller Includes Ion Teck Inc Model MPS-3000 FC

WET BENCHES/CLEANING STATIONS

- 1 – Clean Bottle Washer w/ 6-Bottle Washing Capabilities, Digital Display
- 1 – Wafab International Wet Bench/Environmental Hood, Model 48" PVC-C, w/ Built-In Wash Sink, (2) Air Guns
- 1 – Wafab International Model 36" PVDF Front Access Wet Bench Quartz Lid Cleaner

OVENS

- 1 – Napco Vacuum Oven, Model 5851
- 1 – T-M Vacuum Products Annealing Oven Model V/IG-1206-24, with Digital Over Temp Gage, Digital Temp Controller Gage, Digital Vacuum Gage, Digital Cycle Counter, Digital Process Time Vacuum Back Fill Gages, (1) Adixen Model ACT40 Vacuum Pump

REFRIGERATOR/FREEZER/DISHWASHER

- 1 – Kitchenaid Dishwasher, Model KUDC101XWH3
- 1 – So-Low Environmental Equipment Refrigerator Freezer, Model DHF-RFFMS, Type of Refrigerant R404A, S/N K05061001F, with Digital Temperature Display



WAFAB INTERNATIONAL WET BENCH/HOOD



2003 TOTAL FAB SOLUTIONS HEAT PULSE 610

ANALYZERS • THERMAL ANNEALER • WAFER HANDLING • GAS/AIR CONTROL

ANALYZERS

- 1 – Agilent Model 8563EC Spectrum Analyzer, 9 kHz - 26.5 GHz
- 2 – Agilent Model E4440A PSA Spectrum Analyzer w/ 3 Hz- 26.5 GHz
- 1 – HP Model 8722C Network Analyzer, 50MHz-40GHz, w/ 2-Ports
- 1 – HP Model 83480A Digital Communication Analyzer, OPT 100 Enhanced Trigger
- 1 – Tektronix Model TDS7704B Digital Phosphor Oscilloscope, 7GHz 20GS/s

THERMAL ANNEALER

- 1 – 2003 Total Fab Solutions Heat Pulse 610, Rapid Thermal Annealer, with Thermo Cube Solid State Cooling System Model 300-UL-1G-CE, Total Fab Solutions Heat Pulse 610 Computer Interface, (1) Computer Controller, (1) Approx. 15" Monitor, with Stainless Steel Table

WAFER HANDLING/MEASURING

- 1 – ADT Model UV-950 UV Curing Machine for Use w/ Detaping
- 1 – Allied Model Techcut4 Precision Wafer Cutter, w/ Digital Speed Adjustment, S/N T4-089A-A11
- 1 – Allied Model M-PREP3 Lapping Machine w/ 8" Platen
- 1 – 1992 Dainippon Screen Wafer Scrubber, Model SSW-629-B, Includes (2) Screen Servo Packs, (1) Screen Power Supply, (4) Digital Status Process Readouts, Touch Panel Controls
- 1 – Kulicke & Soffa Model 960-6 Taper Machine w/ Digital Temperature Display
- 1 – Lapmaster Model 20 Precision Surface Lapping Machine
- 1 – Laurier Incorporated Model DS-7000 Wafer Die Pick & Place Machine, w/ Dual Monitors, Integrated Computer, Keyboard, Mouse
- 1 – Orthodyne Electronics Ultrasonic Large Wire Bonder w/ Semi Automatic Operation, Model 20B, Automatic Adjustable Looping & Set Back Wire Size, Stereo Zoom Microscope, Light Source
- 1 – Newport Pneumatic Isolation Table, Model VH3030W-OPT
- 1 – SSM Model 490I CV System, Solid State Measuring Machine, w/ 8" Chuck, Chuck Vacuum Gauge, Probe Lift Air Gauge, HG Contact Gauge, HG Contact Vacuum Gauge, (1) SSM Capacitance Measuring Unit, Radi Sys Integrated Computer, Monitor



1992 DAINIPPON SCREEN WAFER SCRUBBER, MODEL SSW-629-B



LAPMASTER MODEL 20



ALLIED TECHCUT4 PRECISION WAFER CUTTER

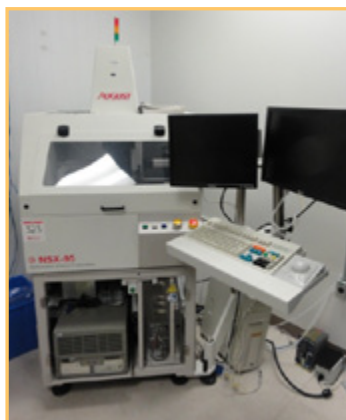
GAS/AIR CONTROL

Multi-Lot – Air Guns

- 4 – Allwin 21 Corporation Gasonics Aura 1000 Asher Stripper, with Allwin 21 AW1008 Upgrade Kit, Approx. 15" Monitor, Integrated Controls
- 1 – Ebara Model ESA80W-HDF Dry Pump, Water Inlet Pressure 0.4 MPA, Water Flow Rate Equal to or Less Than 3.5 Liters Per Minute, M2 Flow Rate is 54 to 57 PAM
- 2 – Johnson Matthey Hydrogen Purifier, Model HP-230
- 1 – Kaeser Wall Mount Air Dryer
- 4 – Mono Tor Model TS4-MT3-N-1 Gas Purifier, with System Display Lights, Push Panel Controls
- 1 – Movin Cool Classic Plus 26 Spot On Portable Air Conditioner
- 1 – Pure Air Systems Model EDOCSC Air Scrubber, S/N PAS2006SMS-002, with GE Fanuc Quick Panel Digital Display, (1) Dwyer Photohelic Pressure Gage
- 1 – RSI Hydrogen Purifier, Model RSD1, Max. PSIG 250
- 3 – SDC Ciphercon 1500 Automated Hazardous Gas Cabinet, with Telemecanique Magellis Digital Status Screen
- 3 – SDC Ciphercon 1500 VMB Valve Manifold Box, with Touch Screen Controls
- 3 – 2006/2007 SDC Model Simplicity Gas Panel Auto Gas Switcher, w/ Digital Display, Touch Panel Controls, Dual Bottle Capability
- 7 – SDC Model Microline Gas Panel for Single Bottle, w/ Tescom Gas Valve
- 3 – Varian Model MD30VS Leak Detector, with Digital Display, Leak Detector Rack, Leak Detector Cart, Varian Tri Scroll Vacuum Pump Model PTF06211ULD, and Associated Hoses and Clamps



LAURIER INCORPORATED MODEL DS-7000 WAFER DIE PICK & PLACE MACHINE



UGUST TECHNOLOGIES MODEL NSX-95 AUTOMATED DEFECT INSPECTION MACHINE



XC ASL ANALOG TEST SYSTEM, MODEL ASL-1000



SDC SIMPLICITY GAS PANEL AUTO GAS SWITCHER



OFFICE & FACILITY SUPPORT EQUIPMENT



DELL 19" AND 17" MONITORS



Large Quantity Of Power Tools, Hand Tools, Storage Cabinets, Parts And Much More. Go Online For Complete Asset List.

OFFICE EQUIPMENT

Multi-Lot – Dell Approx. 19" & 17" Flat Panel Monitors

Multi-Lot – Laboratory Style Stools

Multi-Lot – Printers, Scanners, Copiers

Lot – (1) Firbox Wireless Router, (1) Firbox Switch, (1) Sonic Wall Model Soho Firewall

Lot – (2) Uline 4-Shelf Wire Racks, (1) 4-Shelf Metro Style Rack, (1) Uline 3-Shelf Castered Wire Rack, (1) Metro Style Castered Wire Rack Printer Table

Lot – (4) 2-Door Metal Storage Cabinets with Contents, Contents Include: Wafer Boxes, Suction Cups, Gloves, Totes and Stickers, (2) Approx. 30" x 26" Dry Erase Boards, (4) Approx. 36" x 24" Dry Erase Boards, (1) Costco Stepstool

TOOLROOM EQUIPMENT

Multi-Lot – Toolboxes, Hand Tools, Drills, Grinders, Saws, Sanders, Ratchet Sets, Pipe Benders, Vacuums, Jacks, Carts, Shelving, Storage Cabinets and Much More!

MACHINE TOOLS

1 – Delta Model 179-00 16.5" Pedestal Drill Press w/ Variable Speed, 0.75-HP Motor

1 – Delta Shopmaster Continuous Blade Bandsaw with Stand

1 – Skil 10" Benchtop Drill Press



COMPRESSORS

2 – 2006 Kaeser Model TB26 Air Compressor, Max. Working Pressure 230-PSIG, Type of Refrigerant R134A

2 – Kaeser Model FM11 Compressor, Date of Manufacturer 2005, 10-HP Motor, Maximum 110-PSIG, S/N 1503

6 – Kaeser Model KOR100 Compressor Filter

1 – Sullivan Palatek Model 30DVFD Dry Air Compressor, with Yaskawa Vary Speed F7 Digital Controls, Yaskawa Aircon T-1 Push Panel Digital Display, Maximum Air Pressure 125-PSIG, S/N 11C019

1 – Taskforce 10-Gallon Cap. Air Receiving Tank, 125-PSI Max. Pressure

VACUUM SYSTEMS

1 – Alcatel Vacuum Pump, Model ACP 28

2 – Dekker Vacuum Technologies Model VMX0303KAI-00 Centralized Vacuum System, Date of Manufacturer 2006, S/N H18590, with Reliance Electric Digital Touchpad Controls, 20-HP Motor

1 – Edwards Model QOP 40/250 Vacuum Pump Blower, S/N RS0030975

PUMPS

1 – Edwards Model IQDP80/1200 Dry Pump/Blower Package, S/N RS0046136, Rebuilt. Never Put Back Into Service, with Edwards Model D37209000 Digital Push Button Controller

1 – Ebara Dry Pump, Model A25S, w/ Ebara Control Panel & Digital Display



BLUE-M MODEL IGF-206CX ELECTRIC OVEN



KAESER MODEL FM11 COMPRESSOR

DRYERS

2 – Sitek Process Solution Semi-Tool Spin Rinse Dryer, w/ (2) Cycle Time Speed Controllers, (2) Spin Rinse Modules, (2) Resistivity Monitors

2 – 2011 Sullivan Model 145A-116 Refrigerated Air Dryer, Refrigerant Type: R134A, Maximum Inlet Pressure 230-PSIG

OVENS

1 – Blue-M Model IGF-206CX Electric Oven, Maximum Temperature 340

1 – Lindberg/Blue M Oven, Model M01450A, Temp. Range 40 C to 300 C

1 – Lindberg/Blue M Oven, Model M01440SA, Temp. Range 40 C to 300 C

1 – Napco Vacuum Oven, Model 5851

1 – T-M Vacuum Products Annealing Oven Model V/IG-1206-24

1 – Yamato Mechanical Convection Oven, Model DKN 810, w/ Digital Display



DEKKER VACUUM TECHNOLOGIES MODEL VMX0303KAI-00 CENTRALIZED VACUUM SYSTEM

ASSET ADVISORY AND AUCTION SERVICES



Heritage Global Partners

ASSET ADVISORY AND AUCTION SERVICES

A Legacy Since 1937

A Counsel RB Capital Company



Global Headquarters:

12625 High Bluff Drive
San Diego, CA 92130

For further information, please contact:

Ph: +1 (877) 303.8040

Fx: +1 (866) 388.8595

or visit www.hgpauction.com

Forwarding Service Requested

BUYER'S PREMIUM: 15% cash buyers;
18% for credit card purchasers

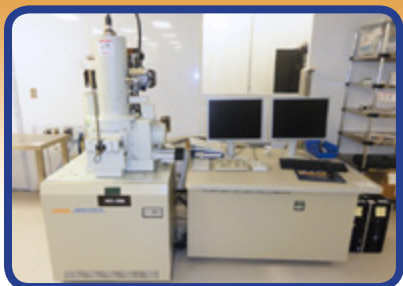
(Refer to Term 7 in the Auction Terms and Conditions for details)

This Sale is Conducted in Partnership with:



GLOBAL WEBCAST AUCTION : APRIL 4, 2013 - 10:00 AM CDT

SemiSouth



No Longer Required by SemiSouth Laboratories, Inc:

**Major Webcast Offering of Late Model Silicon Carbide
Semiconductor Manufacturing & Test Equipment.**

Mississippi State University, Starkville, MS - USA

TERMS & CONDITIONS

Buyers are responsible for all shipping and rigging charges. • All items are sold **AS IS, WHERE IS AND WITH ALL FAULTS**. • Heritage Global Partners shall charge and collect from each successful bidder a 15% on site cash buyers; 18% on site buyers using credit cards. Purchasers who pay in the form of certified funds or wire transfer shall receive a discount from the buyer's premium equal to 3% of the purchase price. • Each successful bidder must pay a 25% deposit toward the purchase price immediately following the successful bid. • Applicable taxes will be added to the purchase price of all taxable items. • Acceptable means of payment include certified funds, wire transfers, *Visa*, *American Express* and *Mastercard*. • The complete terms and conditions that govern this auction will be distributed at the auction site and/or are available on our website at www.hgpauction.com. The complete terms and conditions may include terms unique to this particular auction. Please read them carefully before you bid in the auction. If you participate in the auction, you will be deemed to have read and consented to all of the Terms & Conditions.

UPCOMING SALES CALENDAR



April 04, 2013
12:00 am PDT

A Developer of Innovative
Drilling Technologies.
Featuring Directional Drilling
Rig, Rolling Stock, Machine Tools,
Spares, Furniture, IT, and More!
Redwood City, CA - USA



Apr 17, 2013
10:00 EDT am

State Of The Art Late Model
Machining Facility.

Tecumseh, MI - USA



April 18, 2013
12:00 am PDT

BioPharma Assets Surplus to
the the Continued Operation of
a major Contract Research and
Manufacturing Company.

Bothell, WA - USA

©2013 HERITAGE GLOBAL PARTNERS, A COUNCIL RB CAPITAL COMPANY, ALL RIGHTS RESERVED

Complete Terms & Conditions are contained in the Sale Catalog and on the website at www.hgpauction.com.
Please review the Terms and Conditions prior to placing bids on any items. Global Headquarters: San Diego, California

AFFILIATIONS



INDUSTRIAL
AUCTIONEERS
ASSOCIATION

