



ASSET ADVISORY AND AUCTION SERVICES

SUPPORT EQUIPMENT



(2) ABB TYPE DMI400T GENERATOR, MFG. 2009, NEVER BEEN USED.



SKY TRAK 6036C POWERED BY CUMMINS, TELESCOPIC FORKLIFT 36'



MILLER BIG 40 WELDERA



CRIMPMASTER HYDRAULIC HOSE CRIMPING STATION, 2"



ATLAS COPCO GA-37 AIR COMPRESSOR

POWER PLANT

1 - Caterpillar 3412 Gen set, 12 cyl 668hp, power plant 9Y044889FG01698, GE 30hp 460V, 760 AVA, 600AW, includes 1974 trailmobile van

GENERATORS

2 - ABB Type DMI400T Generator, mfg. 2009, No. 8794626, Weight 3550 kg, 14'L x 5'W x 7'T, Standard IEC 60034-1 (2004), IM 1001, Therm Class/ Temp Rise 200/H, DC Motor, 1250 kW, No. of Brushes 6/ arm 800V, 1625A, 1200 r/min, Excitation 310V, 13.4A, 3BSM003050-XJG with Leroy Somer LSA 52.2 L65/6P 3-Phase Alternator, Never Been Used

2 - Cummins / ONAN UTA 2862 Cummins Gen Set, 1991, 900hp, 12cyl

AIR COMPRESSORS

2 - Atlas Copco GA-37 Air Compressor, 220psi, mdmt 16@ 220psi. Serial or VIN num 718-577, ABP 347245, ARP 845-90

2 - Ingersoll Rand, John Deere JD4039DF Trailer mounted air compressor, Mfg. 1996, 4 cyl diesel engine, MAWP 200psi

HOISTS

Multi-Lot - CM Lodestar B Overhead Hoist, Max load 1/4 Ton - 250 kg, to include CM Series 635 Motor Driven Trolley, Baldor .25 HP Industrial Motor

Much More Available Online!

SALE #2: GLOBAL ONLINE AUCTION MAY 2-3, 2013 - 7:00 AM ADT



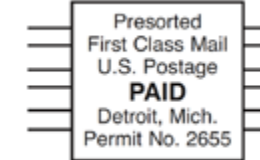
An Aggregate Single Lot Sale Including The Commercial Real Estate And Capital Equipment Of A Hot Mix Asphalt Manufacturing Plant No Longer Required By Alco Corporation.

- 5.00 Cuerdas Lot In Guayama, Puerto Rico, Holding Appropriate Permitting For A Hot Mix Asphalt Plant.
- 7 Ft. Diameter Hot Mix Asphalt Dryer And Mixer
- Baghouse
- 4 Cold Feed Bins
- 50 Ton Surge Bin With Drag Slat Conveyor
- Scale
- Scalping Screen
- Control Room Trailer (Not Including Computer Equipment) And More



Heritage Global Partners

ASSET ADVISORY AND AUCTION SERVICES
A Legacy Since 1937
A Counsel RB Capital Company



Global Headquarters:

12625 High Bluff Drive
San Diego, CA 92130

For further information, please contact:

Ph: +1 (877) 303.8040
Fx: +1 (866) 388.8595
or visit www.hgpauction.com

Forwarding Service Requested

BUYER'S PREMIUM: 15% cash buyers;
18% for credit card purchasers

(Refer to Term 7 in the Auction Terms and Conditions for details)

GLOBAL ONLINE AUCTION : MAY 1-2, 2013 - 7:00 AM ADT



**A Two Day Global Online Equipment Auction:
Featuring Surplus Rolling Stock,
Asphalt Paving, & Earth Moving Equipment.
For A Major Puerto Rican Asphalt Company, Alco Corp.**

TERMS & CONDITIONS

Buyers are responsible for all shipping and rigging charges. • All items are sold **AS IS, WHERE IS AND WITH ALL FAULTS.** • Heritage Global Partners shall charge and collect from each successful bidder a 15% on site cash buyers; 18% on site buyers using credit cards. Purchasers who pay in the form of certified funds or wire transfer shall receive a discount from the buyer's premium equal to 3% of the purchase price. • Each successful bidder must pay a 25% deposit toward the purchase price immediately following the successful bid. • Applicable taxes will be added to the purchase price of all taxable items. • Acceptable means of payment include certified funds, wire transfers, *Visa*, *American Express* and *Mastercard*. • The complete terms and conditions that govern this auction will be distributed at the auction site and/or are available on our website at www.hgpauction.com. The complete terms and conditions may include terms unique to this particular auction. Please read them carefully before you bid in the auction. If you participate in the auction, you will be deemed to have read and consented to all of the Terms & Conditions.

©2013 HERITAGE GLOBAL PARTNERS, A COUNCIL RB CAPITAL COMPANY, ALL RIGHTS RESERVED
Complete Terms & Conditions are contained in the Sale Catalog and on the website at www.hgpauction.com.
Please review the Terms and Conditions prior to placing bids on any items. Global Headquarters: San Diego, California

UPCOMING SALES CALENDAR



May 14, 2013
12:00 am CDT
Sale #4: Global Online Sale on behalf of Schüco TF GmbH Featuring Large Quantity of State-of-the-Arts Vacuum Pumps and More
Osterweddingen, Germany



May 15, 2013
7:00 am PDT
First in a series of Online Sales featuring State of the Art Bio Pharma R&D Lab Equipment from the World's Largest Pharmaceutical Manufacturer!
Massachusetts - USA



May 21, 2013
5:00 am PDT
A 3 Day Global Online Auction Featuring Machine Tools And Facility Support Equipment Of A World's Leading Cutting And Welding Manufacturer, Cigweld.
Preston, Australia

GLOBAL ONLINE AUCTION

STARTING: May 1, 7:00 am ENDING: May 2, 5:00 am ADT



**A Two Day Global Online Equipment Auction
Featuring Surplus Rolling Stock,
Asphalt Paving, & Earth Moving Equipment.
For A Major Puerto Rican Asphalt Company, Alco Corporation.**

On Behalf of:

Alco Corporation

AUCTION DATES:

Starting: May 1, 2013 – 7:00 am ADT

Ending: May 2, 2013 – 5:00 am ADT

AUCTION & PREVIEW LOCATION:

Puerto Rico 185, Canóvanas, 00729, Puerto Rico

PUBLIC INSPECTION:

Monday and Tuesday, April 29th and 30th, 2013
9:00 am – 4:00 pm Local Time or by appointment.

AUCTIONEER'S NOTE:

HGP is pleased to be selected to conduct this Global Online Auction for Alco Corporation.

This Global Online Auction features Surplus Rolling Stock, Asphalt Paving, & Earth Moving Equipment.

Please view our website at www.hgpauction.com for the bidding instructions and the full terms of the sale. Thank you for your interest, and we look forward to providing you quality equipment sales and World Class Service.

ADDITIONAL INFORMATION:

For more information including a photo gallery, equipment list, terms and conditions of sale and more, please visit www.hgpauction.com.

CONTACT:

Ty Lindley
Email: tlindley@hgpauction.com
Tel: +1 858.847.0653



Heritage Global Partners

ASSET ADVISORY AND AUCTION SERVICES
A Legacy Since 1937
A Counsel RB Capital Company

www.hgpauction.com

AFFILIATIONS



ASPHALT PAVING



WIRTGEN 2000DC COLD MILLING MACHINE



ROADTEC RX-10 COLD MILLING MACHINE



(8) BLAW KNOX PF-180H PAVER DUAL DRIVE, 8' SPREADER

TRACTORS

- 1 - Ford 3930 Tractor, w/ 6' Paving broom
- 3 - Ford/ New Holland 4630 Tractor, w/ 6' Paving broom



INGERSOLL RAND DD-90/110 TANDEM VIBRATORY ROLLER



BOMAG BW161AD DUAL DRIVE, TANDEM VIBRATORY ROLLER

COLD MILLING MACHINE

2 - Wirtgen 2000DC Cold milling machine, dual steer, open station, 4 track hydrostatic drive, conveyor 25' X 30", 6' cutter, powered by Cummins 8 cyl diesel.

1 - Roadtec RX-10 Cold milling machine, powered by Mercedes Benz

PAVER

1 - Blaw Knox PF-150 Paver, single drive, 8' spreader, hopper 10'x5'6", powered by Cummins

8 - Blaw Knox PF-180H Paver, Dual drive, 8' spreader, Hopper 7'6" x 9'9", powered by John Deere

3 - Blaw Knox PF-3200 Paver, Dual drive, 8' Spreader, Hopper 7'6" x 10', powered by John Deere

ROLLERS

1 - BOMAG BW161AD, Dual drive, Tandem vibratory roller, powered by Cummins, 66" drum

6 - INGERSOLL RAND SD70DA PRO PAC, Dual vibratory

EARTH MOVING EQUIPMENT • TRAILERS

JOHN DEERE 310E BACKHOE / LOADER



JOHN DEERE 644H 4 WHEEL LOADER



ETNYRE 1999 HOT TRAILER, 9000GAL



TRAILMOBILE A31AISAW 40' STORAGE VAN



OIL TRAILER, 500GAL



HUSKY 1040 SEALER TRAILER



JOHN DEERE 670C GRADER



JOHN DEERE 570B GRADER

LOADERS

2 - John Deere 310G Backhoe/Loader, hrs. unknown, bucket 83"x34", backhoe bucket 22"x27"

1 - John Deere 310E Backhoe/Loader, hrs. 7223 bucket 83"x34", backhoe bucket 22"x27"

4 - John Deere 644H/664G 4 Wheel Loader, 4.5yd bucket, 23.5-25E tires

GRADERS

5 - John Deere 570B/670C Grader, adjustable steering column, 12' moboard, ripper bar in front, 15.5-25 tires

TRAILERS

3 - Etnyre 1999 Hot Trailer, 1993 210,842 km, 18 speed Eaton Fuller. Muncie PTO, sliding fifth wheel, 11R24.5 budd wheels.

1 - Etnyre EWN3A Hot Trailer, 9000gal, 3 axle 11R24.5 budd wheels

1 - Graco, Ingersoll Rand 2475, Husky 1040 Sealer Trailer, 100 gal tank, air compressor w/ Kohler 12.5hp, centrifugal pump, WAWP 200psi

1 - Monotone SP2654, 6060 Dump Trailer, 3 axle, 11R24.5 budd wheels, GVWR 75,000

1 - Oil Trailer, 500gal

1 - Trail Boss KW 50 DTA Drop Deck Trailer, GVWR 90,400lbs, Tulsa winch 20 ton, deck 9'4", slope 6', bed 27", dove tail 6', 108" width, hydraulic ramps, 235/75 R 17.5 budd wheels

2 - Trail EZE RG 4021p2 Drop deck Trailer, GVWR 96,270 lbs., Braden winch 20 ton, deck 8', slope 3', bed 28'6", dove tail 3', 108" width, hydraulic ramps, 10 R 17.5 budd wheels

2 - Water Trailer, 10:00 x 20 spoke wheels, w/ pump and 3.5hp gas engine

ROLLING STOCK



FORD / STERLING, ETNYRE L-7501, SHOOT DISTRIBUTION TRUCK, MFG. DATE 1999



KENWORTH 3 AXLE DUMP TRUCK

TRACTOR TRUCKS

2 - Ford / Sterling, Etnyre L-7501, Shoot Distribution truck, mfg. date 1999, Caterpillar diesel, km 85,325, 11R 22.5 Budd wheels. Etnyre 2,000 gal tank, spray system w/ 12' spray bar, 32 spray jets. Bedford propane tank. Gross weight 33,000lb

2 - Ford, Etnyre Louisville, BT-HL, Distribution truck, black topper. Powered by Caterpillar, km 160,741, 6 speed, Chelsea PTO, 11R 22.5 spoke wheels, 25 gal kerosene tank, black topper tank 1750 gal, 12' spray bar 32 jets

1 - Ford F-800, Terex 2800, Truck crane, mfg. date 1998, 6 speed, km 44,023, 20' flat bed, 11R22.5 Budd wheels. Jib 24', extended 40' max, 4 hydraulic leveling jacks

1 - International 4700 4x2 Primer Truck, 1997, 10 speed transmission, 11R22.5 budd wheels. Spray system, Ford industrial engine w/ pump, 2000gal tank

1 - Kenworth T-800 Tractor Truck, Cummins N 14-E, Eaton fuller transmission, day cab, km 508,171, sliding fifth wheel, Muncie hydraulic tank, 425 65 R 22.5 steering axle, 11 R 22.5 rears, GVWR 52,500

1 - MACK Econodyne, RS688ST Tractor Truck, 12 speed transmission, PTO, sliding fifth wheel, 11R22.5 spoke wheels

1 - MACK CH613 Tractor Truck, 1993 210,842 km, 18 speed Eaton Fuller. Muncie PTO, sliding fifth wheel, 11R24.5 budd wheels.

PRIMER TRUCKS

1 - Ford Superduty XL Primer Truck, 1993, 5 speed, Ford diesel, 235/85 R 16. Atouan gas engine with pump, SN# or VIN# 2FDLF47MOPC806197

1 - International 4700 DT466E Primer Truck, 9083hrs, Eaton hi-low transmission, 11R22.5 budd wheels. Etnyre 2000 gal tank w/ spray system, Ford industrial engine w/pump. SN# or VIN# 1HTSAAAR3XH623498

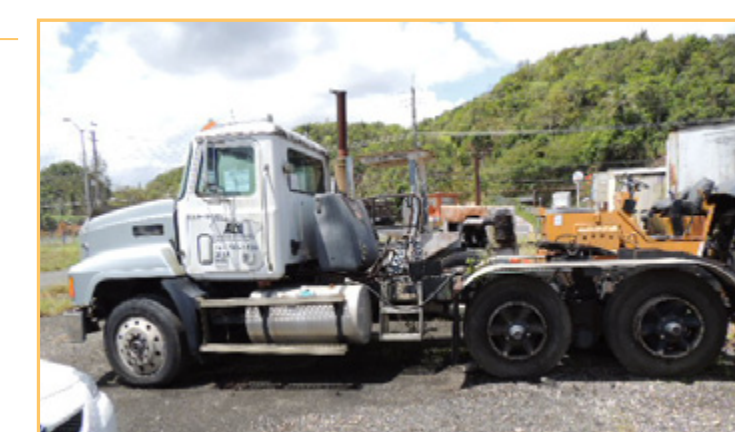
WATER TRUCKS

1 - Freightliner FL-70 Water truck, 1,000gal, 182,167km, 6 speed transmission, 11R22.5 budd wheels

1 - Ford F-800 Water Truck, powered by Cummins, 5 speed transmission, 2000gal tank w/ pump and 5.5 hp gas motor, 200gpm



FORD F-700 SERVICE TRUCK



MACK CH613 TRACTOR TRUCK

DUMP TRUCKS

1 - Ford F550 XL Utility Dump Truck, crew cab, 99, km, 6 speed powerstroke, 22/R19.5

1 - Ford F-550 2002 Crew Cab, power stroke diesel, 5 speed, dump bed 9'x7'x19, pindle hitch, tool box

1 - Kenworth 3 Axle Dump Truck, 729, 165km, Eaton Fuller transmission, Chelsea PTO, Hendrickson aux axle system, 425/65R22.5 front, 11R22.5 rear, budd wheels.

SERVICE TRUCKS

1 - Ford F-700 Service truck, power stroke, 166,784 km, 2 speed H/Low transmission, 10.00 R 20 budd wheels, 220 gal diesel tank, (2) tanks (3) 85gal compartments ea. tank. Air compressor, 25gal water tank, 6 retractable hose reels

1 - International 4900 / DT466E 1997 Service Truck, GVWR 22,500lbs, 11 R 22.5 budd wheels, 4 lube tanks, IR air compressor, 1 diesel tank, 9 retractable hose reels.



FORD SUPERDUTY XL PRIMER TRUCK, 1993