

# GLOBAL ONLINE AUCTION

**STARTING:** October 23, 10:00 am **ENDING:** October 24, 10:00 am MDT

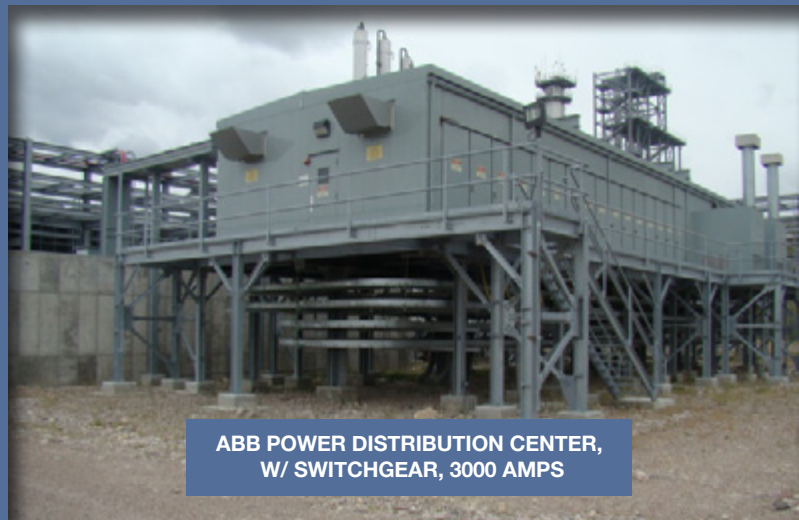


**Subject To US Bankruptcy Court Approval, Case # 4:13-BK-40837**  
**Global Online Bulk and Piecemeal Auction of the Hoku Materials Polysilicon Plant in Pocatello, Idaho.**

**The site is approximately 67 acres and comprised of over 35,400 cubic yards of concrete, 9,488 tons of steel, 246,894 lineal feet of process and utility piping.**



**SUPERIOR STEEL PRODUCTS STORAGE TANKS,  
40,000-GAL CAP., 12' X 45'**



**ABB POWER DISTRIBUTION CENTER,  
W/ SWITCHGEAR, 3000 AMPS**

## Live Public Preview

There Will Be A **Public Preview** Oct. 21st & 22nd  
From 9:00am To 4:00pm, Local Time.

## Contact Information

**David Barkoff, Tel:** +1 650.649.0147  
**Email:** dbarkoff@hgpauction.com



Scan this QR Code with your smartphone for More Information.



**HERITAGE**  
GLOBAL PARTNERS

ASSET ADVISORY & AUCTION SERVICES

For more information including a photo gallery,  
equipment list, and more, please visit  
**[www.hgpauction.com](http://www.hgpauction.com)**

Items subject to prior sale. Buyers are advised &  
encouraged to inspect equipment and read  
all Terms and Conditions prior to auction.



AMERICAN FABRICATION NB937 TCS DISTRIBUTION TANK, 10' X 40'

## STORAGE TANKS

**1** – American Fabrication NB958 Storage Tank, 15' X 40', Carbon Steel Construction, 55,000-Gallon, Vertical, Insulated, Lower and Upper Catwalks, Access Ladder, 60 PSI @ 300-Degree F, Model F

**1** – American Fabrication NB893 TCS Storage Tank, 6' X 30', Carbon Steel Construction, 6,500-Gallon, Overhead, Insulated, Unitized on Concrete Footings, W/ Overhead Catwalk, Access Stairway, Local piping, Valves, Flowmeters, 60 PSI @ 265-Degree F

**1** – Consolidated Fabricators NB914 Storage Tank, 6' X 25', Carbon Steel Construction, 6,000-Gallon, Vertical, Insulated, Lower and Upper Catwalks, Access Ladder, 60 PSI @ 300-Degree F, Model F

**1** – Pacific Tank Company Wastewater Storage Tank, 432,414- Gal Cap., 40' X 40', Carbon Steel Construction, Insulated, Type A516-60 Material Construction, W/ Local Piping and Valves, Access Stairway, Spiral Stairway.

**2** – Industrial Piping NB350 Storage Tank, 4' X 18', Carbon Steel Construction, 1,700-Gallon, Vertical, Insulated, Lower and Upper Catwalks, Access Ladder, 60 PSI @ 300-Degree F, Model F

**2** – Smith NB349 Storage Tank, 9' X 30', Carbon Steel Construction, 15,000-Gallon, Vertical, Insulated, W/ Access Ladder, Support Framework, Lower and Upper Catwalks, 60 PSI @ 300-Degree F, Model F

**Large Quantity of Heat Exchangers and Tanks from: Armstrong, Batiisti, Fabsco, Flowserve, Harris Thermal Transfer Products, Perry, Steeltek, Thompson, and Others.**



INDUSTRIAL PIPING NB349 STORAGE TANK, 4' X 18'



SMITH NB2 STORAGE TANK, 9' X 30"



G & R VAPOR CONSOLE



EATON DISTILLATION COLUMN, 7' DIA AT BOTTOM, 3' DIA AT TOP, 17' 6" TOP HEIGHT

# Live Public Preview

Monday & Tuesday, October 21st & 22nd, (9:00am - 4:00pm) Local Times.



## AIR HANDLERS

4 – Trane T-Series Climate Changer Air Handler, 25-HP, 460V, 60Hz, 3 Phase, 42.5 AMPS, 200 PSI, 220 F Cap.

4 – Trane T-Series Climate Changer Air Handler, 100-HP, 460V, 60Hz, 3 Phase, 155.0 AMPS, 124.0 FLA.

## AIR EXCHANGERS

2 – Smithco 9-Fan Air Exchanger, Galvanized Construction Elevated, Fin/Fan Type, W/ Related Piping and Values

## COOLERS

1 – Docal Precooler, 16" X 5', Carbon Steel Construction, Shell and Tube Type, 350-PSI at 300-Degree F MAWP Shell Side, 350-PSI at 300-Degree F Tube Side, W/ Piping and Values, & 6' X 12' Suction Trap Drum.

1 – Perry Regen Cooler, 89-Square Ft Area, 12" X 8', Carbon Steel Construction, 150-PSI at 400 to -20-Degree F Shell Side, 150-PSI at 400 to -20-Degree F Tube Side, Insulated, Tag# 50PRO-D-5014.

1 – Steeltex Hot Oil Cooler, 12" X 24', Carbon Steel Construction, Shell and Tube Heat Exchanger, 550-PSI at 300 to -20-Degree F Shell Side, 550-PSI at 550 to -20-Degree F Tube Side, Insulated



SMITHCO 9-FAN AIR EXCHANGER



GEC HER 12 CHEMICAL VAPOR DEPOSITION REACTOR, 24-ROD



PERRY FTSS-20-1231 HEAT EXCHANGER, 22" X 22'



GEC GAS CONSOLE

## D-REACTORS

20 – GEC HER 12 Chemical Vapor Deposition Reactor, 24-Rod. W/Stand, Base Plate, Bell Jar

8 – GEC Hydrogen Reactor, 36-Rod, W/ Stand, Bas Plate, Bell Jar, W/ Inner Bell Jar-(UNINSTALLED)

## REGENERATION SEPARATOR

1 – Arrow Tank Regeneration Separator, MAWP 172 PSI at 300-Degrees F, -50-Degrees F at 172/FV

## HEAT EXCHANGERS

1 – Harris Thermal Transfer Products Heat Exchangers, 5' X 16', Carbon Steel Construction, Shell and Tube Type, Horizontal, 150-PSIG at 170-Degree F MAWP Shell Side, 170-PSIG at 275-Degree F Tube Side, W/ Stainless Steel Ends

15+ – LIBIG Heat Exchanger

1 – Ohmstede 31-144 Heat Exchanger, 36' X 12', Carbon Steel Construction, Horizontal, Shell and Tube Type, 280-PSI at 600-F Shell MAWP, 247-PSI at 450 F Tube MAWP

10+ – Perry FTSS-20-1231 Heat Exchanger, 1,231-Square Ft Area, Stainless Steel Construction, Liquid Interchanger, Shell and Tube Type, 300-PSI at 300 to -50-Degree F Shell Side, 300-PSI at 300 to -50-Degree F Tube Side.

5 – Steeltex Heat Exchanger, Regen Chiller, 306-Square Ft Cooling Area, 304L Stainless Steel Construction, 350-PSI at a400 to -50-Degree F Shell Side MAWP, 150-PSI at 400 to -50-Degree F Tube Side, insulated, 24" X 12'

## AIR EXCHANGERS

2 – Smithco 9-Fan Air Exchanger, Galvanized Construction Elevated, Fin/Fan Type, W/ Related Piping and Values.

## VAPOR CONSOLES

4 – G & R Vapor Console, Mfg. Year 2008.



LIBIG HEAT EXCHANGER



MIDWEST IMPERIAL STEEL FAB. INC SURGE DRUM, 15' X 60'

## VGR SUPERSTRUCTURE

**Lot** – VGR Superstructure, Galvanized Steel, Multi-Level, Handrails, Grated Walkways, & Wire Copper Cable. Dimensions of Structures - (1) 40' W X 40' L X 199' H, (2) 58' W X 16' L X 33' H.

## HYDROCHLORIC ACID COLUMN CONDENSER W/ DRUM

**1** – LIUIC Hydrochloric Acid Column Condenser, 3,068-Square Ft. Area, 304L Stainless Steel Construction, Shell and Tube Type, 350-PSI at 150 to -55-Degree F MAWP Shell Side, 260-PSI at 150 to -55-Degree F Tube Side, Horizontal, Insulated, Tag# 50PRO-E-5011

## ECONOMIZER

**2** – CA Circul-Aire DAS-606-2D24/12SC Economizer, 460V, 60Hz, 3 Phase, 10-HP, 12.5 FLA, 2616 RPMS

## MOTOR CONTROL CENTER

**1** – ABB Power Distribution Center, Considered for D-Reactor, Switchgear & Motor Control Centers, Communication Processors, Feeder Relays, 15 KV Switchgear, 3,000 AMPS, Metal Enclosure, Temperature Controlled, UPS System, Elevated on Steel Structure & Mezzanine.

## MOTOR CONTROL CENTER

**10+** – Allen-Bradley Centerline 2100 Motor Control Center, 480V, MCC 1200A

## EXPLOSION PROOF HVAC

**4** – Specific System DUAL8180-C-HWD-X-G-X-15-TB-W-Z-N-N-Y-AIS Explosion Proof HVAC, W/ Purge & Pressurization, 180,000 Cooling Cap, 51,210 Heating Cap.

## GENERATORS

**4** – Cummins Power Generation DQKAB-5858009 Emergency Stand-By Generator, 2,500 KVA, 480 V, 3,007 AMPS, W/ Cummins 16-Cylinder Diesel Engine, Radiator Package, Unitized in Steel Fabricated Elevated Enclosure, Diesel Fueled.

**Large Quantities of Raw Materials Including: Cabling, Wiring, Scrap Metal and More Available Online.**



ABB STEP-DOWN TRANSFORMER



ALLEN-BRADLEY CENTERLINE 2100 MOTOR CONTROL CENTER



AEG THYROBOX THYRISTOR POWER CONTROLLER

## TRANSFORMERS

**8** – ABB Thyristor Controlled Power Supply, 13,800V, 60Hz, 3 Phase, Insulation Level 95KV, Force Air, 0-690Vac

**4** – Eaton Cuttler-Hammer V48M47T45EE Lot (3) Dry Transformers, W/ Control Panels

**13** – Hunterbon Transformer, 3,100-KVA, 3-Phase, 60-Hz, 13,800-Volt Primary, 1,600-Volt Secondary, w/ AEG Thyrobox VSC Unit

## CONTROLLERS

**8** – AEG Thyrobox Thyristor Power Controller, New in Box

**1** – Thermon Electric Heat Tracing Power Distribution, Control & Monitoring Panel, Dual Controller, 480/277VAC, 3-Phase, 60Hz, 150A

## TRANSFER SWITCH CONTROL

**8** – Russelectric RTBDNB-12004CEF Automatic Transfer Switch Control System, Type 3 Enclosure. Mfg. Year 2008.



ABB THYRISTOR CONTROLLED POWER SUPPLY



ALLEN-BRADLEY CENTERLINE 2100 MOTOR CONTROL CENTER

# Live Public Preview

Monday & Tuesday, October 21st & 22nd, (9:00am - 4:00pm) Local Times.

## **GAS COMPRESSORS**

**2** – GEA FES 11605B/3855 Gas Compressor, Packaged, 2-Stage, Refrigeration Compressor, Skid Mounted, W/ type 11605 Screw Compressor, 600-HP Electric Motor, Type 3855 Rotary Screw Compressor Unit, 600-HP Drive, W/Control Panel, Heat Exchanger, Recirculating Pumps, Pressure Vessel.

**3** – Neuman & Esser 1T2S190 Gas Compressor, 1,656-Cubic FT, Reciprocating Type, 57.8-PSIG Suction Pressure, 130.8-PSI Differential Pressure, 900-HP Electric Motor, Tag# 50PRO-COM-5001B.

## **COMPRESSOR SUCTION DRUM**

**2** – Arrow Tank MB37118 Regen Compressor Suction Drum, 18" X 6', Stainless Steel Construction, Vertical, Insulated, 172-PSI at 300-Degree F MAWP

## **REGENERATION SEPARATOR**

**1** – Arrow Tank Regeneration Separator, MAWP 172 PSI at 300-Degrees F, -50-Degrees F at 172/FV, Tag# 50PRO-D-5006.

## **EXPANSION TANK**

**1** – Arrow Tank Expansion Tank, 5' X 10', Carbon Steel Construction, Insulated, 280-PSI at 400 to -30-Degree F MAWP



U.S. MOTORS 300-HP RECIRCULATING PUMP



HOWDEN P123LG280/17 REGENERATION GAS



NEUMAN & ESSER 1T2S190 GAS COMPRESSOR



LIUIC HYDROCHLORIC ACID COLUMN CONDENSER



CLEAVE-BROOKS FLX700-800-150ST WATER TUBE BOILER



INGERSOLL-RAND IRN150H-OF AIR COMPRESSOR

## **ADSORBERS**

**6** – Arrow Tank Adsorber, 6' X 30', Carbon Steel Construction, Vertical, 279-PSI at 480 to -30-Degree F MAWP, Insulated, W/Piping and Values, Tag# 50PRO-ADS-5003A.

**2** – Steeltex Adsorber, 6' X 30', Carbon Steel Construction, Vertical, 279-PSI at 480 to -30-Degree F MAWP, Insulated, w/ Piping, Values, Galvanized Steel Superstructure.

## **SCRUBBER SYSTEMS**

**1** – Croll-Reynolds 336V Emergency Scrubber Tank, 95,000-Gallon Cap., 20' X 20', Fiberglass Construction, W/Spray Tower.

**2** – Verantis 108 Sump Tank Vent Gas Scrubber System, W/ Fiberglass Scrubber Vessel, 8' X 20', 2,500-Gallon Fiberglass Sump Tank, 108-Degree, (2) 8" Basket Strainers, (2) Goulds 100-HP Electric Motors, Belt Driven, Control Panel, W/ Foxboro Communicator Series PH & Electrode Conductivity Meters, CH-24 Fume Exhaust Blower Fans, W/ 150-HP Electric Motors, Fiberglass Venting, Fiberglass Exhaust Pack.

**Large Quantities of Power Distribution Equipment and Electrical Distribution Panels, from: ABB, General Electric, Siemens, and Others.**



TRANE T-SERIES CLIMATE CHANGER AIR HANDLER

## **GLYCOL CHILLERS**

**2** – GEA FES 1160SE Glycol Chiller, Skidded Package, Type R-507 Refrigerant, Water Cooled, W/ Model 1160S Series Compressor, Teco Westinghouse 2,250-HP Electric Motor, 3-Phase, 2,300/4, 160 V, 3,578 RPMs, Horizontal Pressure Vessel, W/ Recirculating Pumps.

## **GLYCOL RECIRCULATING CHAMBERS**

**2** – GEA FES Glycol Recirculating Chamber, Insulated, Horizontal, W/ Overhead heat Exchanger, Gforce Touchscreen Control.

## **RECIRCULATING PUMPS**

**5** – U.S. Motors 300-HP Recirculating Pump, 3k10 X 8-16RV/14.69, W/ US Model Titan II 300-HP/4000-V Electric Motor, 3-Phase, W/ Piping values.

## **GRINDING PUMPS**

**8** – Keen 2-HP Grinding Pump, , 36" Aluminum Lid, (UNINSTALLED)



GEA FES REFRIGERATION SKID

## PRESSURE VESSELS

- 2 – Arrow Tank Pressure Vessel, 5' X 12', Carbon Steel Construction.
- 2 – Midwest Metal Roll & Fabricating Pressure Vessel, 4' X 15' H, Carbon Steel Construction Stainless Steel Values, Sight Glass Flowmeters, Access Ladder, Lower & Upper Catwalk.
- 1 – Steeltex Pressure Vessel, 30" X 114', Carbon Steel Construction.

## STORAGE VESSELS / TANKS

- 2 – GEA FES Storage Vessel, 6' X 20', Carbon Steel Construction, 350-PSI at 500-Degree F MAWP
- 1 – Midwest Metal Roll & Fabricating MB37125 Hot Oil Storage Tank, 25,000-gallon Cap., Carbon Steel Construction, Vertical, Access Ladder, Local Piping, Flanged Outlets.
- 1 – Pacific Tank Company Wastewater Storage Tank, 432,414- Gal Cap., 40' X 40', Carbon Steel Construction, Insulated, Type A516-60 Material Construction, W/ Local Piping and Values, Access Stairway, Spiral Stairway
- 4 – Superior Steel Products Storage Tank, 60,000-Gallon Cap., 15' X 46", Carbon Steel Construction, Epoxy Coated Interior, 160-Degree F Maximum Design Pressure.
- 1 – Smith NB349 Storage Tank, 9' X 30", 15,000-Gallon, Vertical, Insulated



ARROW TANK SURGE DRUM, 4' X 20'



SUPERIOR STEEL PRODUCTS STORAGE TANKS, 60,000-GALLON CAP , 15' X 46"



ARROW TANK ADSORBERS, 6' X 30'

## STORAGE DRUMS

- 3 – Arrow Tank Storage Drum, 4' X 7', Carbon Steel Construction, Compressor Suction Drum, Vertical, 260-PSI at 300 to -30-Degree F AWP, W/ Flanged Outlets.

## SURGE DRUM

- 1 – Midwest Imperial Steel Fab. Inc Surge Drum, 15' X 60', Carbon Steel Construction, Vertical, Bolted to Concrete Pad, W/ Access Ladder, Staged Catwalks, Manholes, Local Piping.



JETT WELD MB2025 DISTILLATION COLUMNS, 60" X 131'



HARRIS THERMAL TRANSFER PRODUCTS MB3630 STORAGE TANK, 10' X 20'

## REFRIGERATION SKIDS

- 4 – GEA FES Refrigeration Skid, National Board # 17332, 350-PSI at 500-Degree F MAWP, W/ FES Compressor, 600-HP Electric Motor, Heat Exchanger, Control panel, Recirculating Pump

## WATER DEIONIZATION DISTRIBUTION SYSTEM

- 1 – General Electric DI Water Deionization Distribution System, W/ Control Panel, (2) Recirculating Pumps, 30-HP, Piping and Values, 10,574-Gal Deionized Fiberglass Water Storage Tank, 460V, 3-phase, 60Hz, 100 AMPS. Mfg. Year 2010.

## REVERSE OSMOSIS SYSTEM

- 1 – General Electric RO-XPRO-35-DP-PRE-SS Reverse Osmosis System, Skidded Package, W/ Control, Allen-Bradley Model Panelview Plus 700 Touchscreen, Tonkafto Recirculating Pumps, 15-HP, 5-Wave Cyber membrane Pressure Vessel Tubes.

## ULTRAVIOLET DISINFECTION UNIT

- 1 – Aquafine HX04CDLU Ultraviolet Disinfection Unit, Skidded, W/ Ultraviolet Tube, (2) Stainless Steel Cartridge Filter Units, 3-Position Stainless Steel cartridge Filter on Skid. Mfg. Year 2010.

## DI WATER DRUM

- 1 – DI Water Drum, 6' X 60', Carbon Steel Construction, Vertical, Bolted to Concrete Pad.

**Large Quantities of Pumps, Motors, Valves, Centrifuges, Compressors, Controls and More Available Online.**



SUPERIOR STEEL PRODUCTS STORAGE TANKS, 40,000-GAL CAP., 12' X 45'

# Live Public Preview

Monday & Tuesday, October 21st & 22nd, (9:00am - 4:00pm) Local Times.

## BOILER EQUIPMENT

- 1 – Cleaver-Brooks FLX700-800-150ST Water Tube Boiler, Natural Gas Fired, 150-PSI Rated, 800-HP, W/ Pro-Fire Model LNVG-80 Packaged Burner System
- 1 – Cleaver-Brooks SSPT-260-2D Boiler Feed System, W/ 400-Gal Carbon Steel Tank, (2) Recirculating Pumps, skid Mounted, 7000-Lb per Minute



ABB POWER DISTRIBUTION CENTER, W/ SWITCHGEAR



NISSAN MU1F2A25LV FORK TRUCK



THOMAS & BETTS BATTPAC LT CRIMPING GUN



HAAS EC300 CNC HORIZONTAL MACHINING CENTER



IRWIN HANSON TAP & HEXAGON DIE MASTER SET



## FACILITY SUPPORT EQUIPMENT

- 1 – Gast 4LCB-46T-M450GX Horizontal Air Compressor, 1/2-HP, 60Hz, 1-Phase
- 1 – Genie Z-45/25J Aerial Lift, 500lb Cap, 2-People Max, 115V, 15A.
- 1 – Genie GS-2032 Electric Man Lift, Scissor Type.
- 1 – Haas EC300 CNC Horizontal Machining Center, 12,000-RPMS, 30-HP, 40-Pocket Tool Changer, TSC Through-Spindle Coolant, InLine Direct Drive Spindle, 2-Pallets, 11.8" X 11.8", X, Y, Z Travel= 20" X 18" X 14", 208/230V, 3-Phase, 50/60Hz, 80 AMPS, (UNINSTALLED)
- 2 – Hypertherm Powermax 85 Plasma Cutter
- 1 – Met-Chem Filter Press, 30CU. FT, 800mm, W/ Extra Filters, (UNINSTALLED)
- 1 – Miller Trailblazer 302 Welder/Generator, CC/BV, AC/DC Welder, 11,000- Watt Generator, Gasoline Power
- 1 – Nissan MU1F2A25LV Fork Truck, 4,000-lb Cap, LPG, Pneumatic Tires, Side Shift, Overhead Guard, 3-Stage, Fork Extensions
- 1 – Phoenix DryRod II Electrode Stabilizing Oven, 120V, 75 Watts

**Large Quantities of Facility Support Equipment from:  
Caterpillar, Cummins, Ingersoll-Rand, Otis, Trane and Others.**

## CENTRIFUGAL PUMPS

- Lot – Durco MK3 Lot (4) Centrifugal Circulating Pumps, Size 3K6X4-16RV, 125-HP Electric Motor, W/ Insulated Local Piping and valves, Ashcroft Gauges.
- Lot – Durco Lot (6) Centrifugal Circulating Pumps, 3K8X6-16RV, 200-HP Electric Motor, W/ Flowsolve Heat Exchange, Jacoby-Tarbox Flowmeter, Sight Glass, Insulated, Local Piping and Values
- 1 – Gould 20-HP Lot (4) Centrifugal Circulating Pumps.
- Lot – Siemens 10-HP Lot (3) Centrifugal Pumps, Cast iron Construction, W/ Stainless Steel Impeller, Hot Oil Pump, 140-Gal per Minute, 42-PSI
- Lot – Teikoku RV44-281 1J4YM Lot (2) Centrifugal Pumps, 589-Gal per Minute, 150-PSI, 150-HP, W/ Local Piping and Values, W/ Explosion-Proof Housing, Electrical Controls.

**Large Quantities of Raw Materials Including:  
Cabling, Wiring, and Scrap Metal.**



LOT (6) CENTRIFUGAL CIRCULATING PUMPS



GENIE GS-2032 ELECTRIC MAN LIFT



GENIE Z-45/25J AERIAL LIFT, 500LB CAP



**AUCTIONEER'S NOTE**

HGP is pleased to be selected to conduct this Global Online Auction for **Hoku Materials, Inc.**

**ABOUT THE SALE**

Subject To US Bankruptcy Court Approval, Case # 4:13-BK-40837, Heritage Global Partners will be conducting a global online bulk and piecemeal auction of the Hoku Materials Polysilicon Plant in Pocatello, Idaho.

The Hoku Materials Plant is a complete, world class production facility that is virtually brand new, and never saw real production of any sort. The site is approximately 67 acres and comprised of over 35,400 cubic yards of concrete, 9,488 tons of steel, 246,894 lineal feet of process and utility piping.

This sale features an amazing inventory of brand new and never used equipment, and consists of assets to suit a host of industries. Please refer to the online catalog for up to the minute lot sequencing. Please refer to the key assets online for preliminary asset related details. A complete listing of assets can be found online as well.



PACIFIC TANK COMPANY WASTEWATER STORAGE TANK, 432,414- GAL CAP., 40' X 40'

Scan this QR Code with your smartphone for More Information.

**Contact Information**

David Barkoff, Tel: +1 650.649.0147  
Email: dbarkoff@hgpauction.com

**BUYER'S PREMIUM: 15%** cash buyers;  
**18%** for credit card purchasers  
(Refer to Term 7 in the Auction Terms and Conditions for details)



Subject To US Bankruptcy Court Approval, Case # 4:13-BK-40837

**Global Online Bulk and Piecemeal Auction of the Hoku Materials Polysilicon Plant in Pocatello, Idaho.**

**FEATURING AN AMAZING INVENTORY OF BRAND NEW AND NEVER USED EQUIPMENT!**



**GLOBAL ONLINE AUCTION**

Starting: October 23, 2013 – 10:00 am MDT  
Ending: October 24, 2013 – 10:00 am MDT

**AUCTION LOCATION**

1 Hoku Way Pocatello, ID 83204

**AUCTION PREVIEW**

Heritage Global Partners will be hosting an open to the public preview and inspection on October 21st & 22nd from 9:00am - 4:00pm.

In Conjunction with:



**NORTH AMERICAN OFFICES**

Atlanta, Baltimore, Boca Raton, Dallas, Detroit, Los Angeles, San Diego, San Francisco, White Plains, Toronto

**GLOBAL OFFICES**

Barcelona, Dusseldorf, London

**GLOBAL HEADQUARTERS**

Hacienda Del Mar  
12625 High Bluff Drive  
San Diego, CA 92130  
Phone: (877) 303.8040  
Fax: (866) 388.8595

**FIRST CLASS MAIL**

**POSTMASTER:** Dated Material.  
Please Deliver Promptly.

Presorted First Class Mail  
U.S. Postage  
**PAID**  
San Diego, CA  
Permit No. 00

For complete Terms of Sale, visit our website at:

**www.hgpauction.com**

**AFFILIATIONS**

