



# 2 DAY GLOBAL ONLINE AUCTION

By Court Order, Gregg F. Stewart, Assignee in the Assignment for the Benefit of Creditors of Radiology Corporation of America

## UNIQUE OFFERING OF

### RCOA's Mobile Fleet of PET/CT Imaging Systems Featuring:

- 2001 Landoll Corp Trailer with 2001 GE PET Advance NXI Scanner
- 2003 Landoll Corp Trailer with 2003 GE DST-4PET/CT Scanner
- 2004 Landoll Corp Trailer with 2004 GE DST-4PET/CT Scanner
- 2004 Stanton SCH51 Trailer with 2004 Siemens Biograph Duo Scanner
- 2005 Landoll Corp Trailer with 2006 Siemens Biograph Duo Scanner
- 2003 Wabash National Corp Trailer with 2003 Siemens Biograph 6 Scanner
- 2008 Stanton SCH51 Trailer with 2008 Siemens Scanner
- 2003 Peterbilt 9000s Tractor  
Vin # 1xp5db9x33d590714
- 2000 Intentional Tractor 9400I  
Vin #3hscnamr4yno47135
- 1999 International Tractor 9400I  
Vin #2hsfhamr5xc046368



*"The economic benefits and flexibility that a mobile scanner could provide to your facility versus a fixed-site scanner can be very compelling. With a mobile unit, you could receive a day or more of service each week or month with no capital outlay or fixed overhead."*

**- Radiology Corporation of America**

**LOCATION: ASSETS LOCATED IN 6 CITIES THROUGHOUT OREGON, TEXAS, FLORIDA, BALTIMORE.**

# MOBILE PET/CT SCANNERS



## GE DISCOVERY ST4 PET / CT MOBILE SCANNER

GE Advance NXI Mobile PET Imaging System. Retired unit but can be made functional, Whole Body PET Camera system for Quantification of Biochemical and Metabolic Processes. Detector/Gantry System 59cm Patient Port, 18 detector rings Imaging a 15 cm Axial field of view, Imaging of 35 simultaneous slices in stationary mode. Patient Imaging Table, (1) Injection Chair with Hot Radiology Lab and Lab Cabinet, HP xw5000 work station, Sun Ultra 60 PET operation system, HP Surestore DAT 24, Codonics NP1660M Medical Printer, Sony Audio/Video control center, AK Specialty Vehicles Trailer Features: 2001 Landoll Corp 48' X 96' Wide Trailer, USA Unit, Last Inspection June 2013, (2) Slideouts, Premium Tires, Intercom System, Automatic Transfer Switch, Fire Detection System, Handicap Accessible Lift Gate. Sound Reduction Housing For Kohler 60kW Generator Model 60REOZJ, SN# 0711409, Digital Leveling Indicators, Emergency Lighting, Alarm System, Florida Perm License Plate # C95 85S , VIN # 1LH142UH111011670



## NON FUNCTIONING GE DISCOVERY ST4 PET/ CTA

Non Functioning GE Discovery ST4 PET / CT Mobile Scanner. System To Include, Integrated Gantry Containing Slip Ring Design CT X-ray And Multi-slice Detector, Twenty Four PET Detector Rings Of Bismuth Germinate (BGO) Crystals, Patient Handling System, High Speed Acquisition Electronics And PET Image Reconstruction Patient Imaging Table With Extended Dual Patient Scan Range PET/CT, Tube Installed Aug-16th 2013, Mass count 357425, Missing 5 Detectors Removed For Other Units, Raptor Power Supply Needs Repair, CEM II Removed, Raptor SBC Removed, GE Power Distribution Unit Mod.# 2335370, SN.# RW121B, Powerware Uninterruptible Power Supply Model 10 SN.# EV224AXX11 (Won't Power Up) ; (2) Injection Chairs With Hot Radiology Lab With Lab Cabinet Shielding, GE RIP Chassis Server Missing, RIP Chassis Pegasus Board, SBC Board And Hard Drive Removed And Placed In Another Unit. AK Specialty Vehicles Trailer Features: GE Discovery ST PET/CT Mobile System, 2004 Landoll Corp 48' X 102' Wide Trailer, 80,000 Lb. Rated Load Capacity With 23,000 Lb. Each Axil, USA Unit, (2) Slideouts, Premium Tires, Intercom System, Automatic Transfer Switch, Fire Detection System, Handicap Accessible Lift Gate. Sound Reduction Housing For Kohler 100kW Generator Model 100REOZJB SN.# 0772675, Digital Leveling Indicators, Emergency Lighting, Alarm System, Florida Perm License Plate # C9570s, VIN # 1LH142UH241013478 Trailer ID # G0422A



## GE ADVANCE NXI MOBILE PET IMAGING SYSTEM

GE Advance NXI Mobile PET Imaging System. Retired unit but can be made functional, Whole Body PET Camera system for Quantification of Biochemical and Metabolic Processes. Detector/Gantry System 59cm Patient Port, 18 detector rings Imaging a 15 cm Axial field of view, Imaging of 35 simultaneous slices in stationary mode. Patient Imaging Table, (1) Injection Chair with Hot Radiology Lab and Lab Cabinet, HP xw5000 work station, Sun Ultra 60 PET operation system, HP Surestore DAT 24, Codonics NP1660M Medical Printer, Sony Audio/Video control center, AK Specialty Vehicles Trailer Features: 2001 Landoll Corp 48' X 96' Wide Trailer, USA Unit, Last Inspection June 2013, (2) Slideouts, Premium Tires, Intercom System, Automatic Transfer Switch, Fire Detection System, Handicap Accessible Lift Gate. Sound Reduction Housing For Kohler 60kW Generator Model 60REOZJ, SN# 0711409, Digital Leveling Indicators, 2 - HVAC units, Emergency Lighting, Alarm System, Florida Perm License Plate # C95 85S , VIN # 1LH142UH111011670, Trailer ID# G0210A

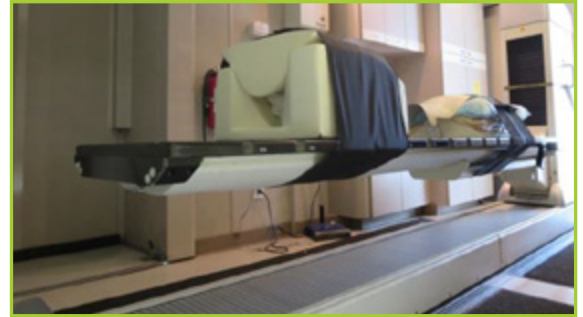


To view a complete asset list, visit our website @ [www.hgpauktion.com](http://www.hgpauktion.com)

# MOBILE PET/CT SCANNERS

## SIEMENS BIOGRAPH 6 PET/CT MOBILE SCANNER

Siemens 315490 2003 Siemens Biograph 6 PET/CT Mobile Scanner; Siemens Somatom Emotion 6 CT Biograph 6 Scanner And Gantry P10 F Patient Handling System. 4 Siemen's PCs Operational Systems, Manuals, Polyscience Coolant Recirculator, Patient injection area including Hot Radiology Lab With Lab Cabinet Shielding and Nortec Humidifier. Trailer Is A 2003 Wabash Ellis & Watts STI Siemens Trailer VIN # AJJ482W73L814988. Trailer Contains 2 Slide Outs, 48ft x 102" , 68,000 Lb Rated Load Capacity, 2 External AC Units, Kohler 30KW Generator, 120v/480v, Side Lift Gate, Under Belly Storage, Air Compressor, Back Up Chiller, Intercom System, All Steps And Guard Rails. Year 2003; S/N# 44956. ID # S0733E



## SIEMENS BIOGRAPH PET/ CT MOBILE SCANNER

Siemens Medical Solutions Biograph 6 Siemens Biograph 6 True Point PET/ CT mobile scanner. Trailer #37. System to include Isolation Transformer, CPS Innovations PET Gantry, CT Gantry, Patient Handling System, Siemens Biograph High-Powered Medical Imaging Platform, (2) Isolation Chairs with Hot Radiology Lab. AK Specialty Vehicles trailer features: GE Discovery ST PET/CT Mobile System, 48' x 102' Wide Trailer, 80,000 lb rated load capacity with 23,000 lb each axle, USA Unit, (2) Slideouts, Premium Tires, Intercom System, Automatic Transfer Switch, Fire Detection System Honeywell Silent Knight SK2, Sound Reduction Housing, Hot Lab Cabinet Shielding. Florida Perm Trailer License Plate # 383 4CD, ID # 1S95C51278S834134 Dec 2007, Trailer ID # S0837C



## SIEMENS PET / CT MOBILE SCANNER

Siemens Biograph Duo LSO PET / CT Mobile Scanner, Year 2004, Retired Unit but can be made operational. The Biograph Tomograph is a whole body tomograph designed for purposes of oncological imaging and diagnosis. Scanning unit Integrated PET/CT Gantry, PET System imaging capability of the Biograph Tomograph consists of the ECAT Accel Multi-LSO-Detector Ring System with 3D acquisition and reconstruction and 47 image planes with a 16.2cm axial field view. CT system imaging capability of the Biograph Tomograph consists of the SOMATOM Emotion DUO SN#1460, featuring a full range of Multi-slice Spiral, CPS Innovations. PET/CT Patient Handling System SN# 0301061, 3 Fujitsu Siemens PC operational systems, Codonics Imager Large format, Isolation Transformer, water recirculator / cooler. AK Specialty Vehicles 2004 Landoll Corp 48' X 102' Wide Trailer, 80,000 Lb Rated Load Capacity With 23,000 Lb Each Axil, USA Unit, (2) Slideouts, Premium Bridgestone tires, Intercom System, Automatic Transfer Switch, Fire Detection System, Handicap Accessible Lift Gate. Sound Reduction Housing For Kohler 100KW Generator Model 100RE0ZJB



For additional information, Contact:

**Nick Dove**, 858.847.0659, ndove@hgpinc.com | **Ty Lindley**, 858.847.0653, tlindley@hgpinc.com

# MOBILE PET/CT SCANNERS

## SIEMENS BIOGRAPH PET/ CT MOBILE SCANNER

Siemens Medical Solutions Emotion 2/ Biograph 2 Siemens Emotion 2/ Biograph 2 PET/ CT mobile scanner. Trailer #26. System to include Isolation Transformer, PS Innovations PET Gantry model P0006733 s/n P0006733 , PET/ CT Phoenix Gantry model P0006249 s/n 0401054, PET/CT Patient Handling System s/n 0401129 mfg 2004, Siemens Biograph 2 High-Powered Medical Imaging Platform, Siemens 10150917 s/n 701346, (2) Isolation Chairs with Hot Radiology Lab. AK Specialty Vehicles trailer features: GE Discovery ST PET/CT Mobile System, 48' x 102' Wide Trailer, 80,000 lb. capacity, USA Unit, (2) Slide outs, Premium Tires, Intercom System, 100kW Kohler generator w/ Automatic Transfer Switch, Fire Detection System, Sound Reduction Housing, Hot Lab Cabinet Shielding, Cruv Controls CRUV 99-4 480V, 3 PH, 7.2A, 50/60 Hz, s/n 1126386-01-08-CC, Florida License # 644 PTF exp 6-15, Trailer ID # S0526A



## SEMI TRUCKS



### 2003 PETERBILT SEMI TRUCK

Peterbilt 9000S 2003 Peterbilt Semi Truck with Cat Model C15, SN# 6N270044, Diesel, 10 speed, Aluminum Wheels, Bridgestone Tires, Air Ride, 716,340 Miles. VIN # 1XP5DB9X33D5990714



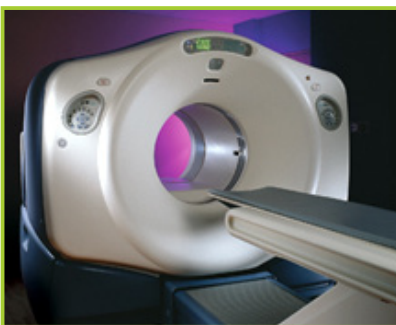
### 2000 INTERNATIONAL SEMI TRUCK

International 9400I SBA6x4 2000 International Semi Truck, with Detroit 60 series 12.7 Liter Diesel, 230" WB, 10 speed, Aluminum wheels, Bridgestone tires, Air ride, 857,603 Miles, VIN # 3HSCNAMR4YN047135



### 1999 INTERNATIONAL SEMI TRUCK

International 9400I 1999 International Semi Truck with Detroit 60 Series 12.7 Liter Diesel, 10 speed, Aluminum Wheels, Bridgestone Tires, Air Ride, Reads 137,236 Miles. VIN # 2HSFHAMR5XC04636



By Court Order, Gregg F. Stewart, Assignee in the Assignment for the Benefit of Creditors of Radiology Corporation of America.

## UNIQUE OFFERING OF RCOA'S Mobile Fleet of PET/CT Imaging Systems

**A BUYER'S PREMIUM WILL APPLY AT THIS SALE**

**BIDDING BEGINS THURSDAY MAY 29TH, 7:00AM EST • BIDDING EXPIRES FRIDAY MAY 30TH, 10:00AM EST**

**ASSETS LOCATED IN MULTIPLE LOCATIONS. PREVIEW MAY 26TH 9AM - 4PM OR PRIOR BY APPOINTMENT ONLY.**



### CONTACTS:

**Ty Lindley**, 858.847.0653  
tlindley@hgpauction.com

**Nick Dove**, 858.847.0659  
ndove@hgpauction.com



**HERITAGE**  
GLOBAL PARTNERS

ASSET ADVISORY & AUCTION SERVICES

Please contact either auctioneer for more details or to coordinate your inspection.

[www.hgpauction.com](http://www.hgpauction.com)