



# GLOBAL ONLINE AUCTION

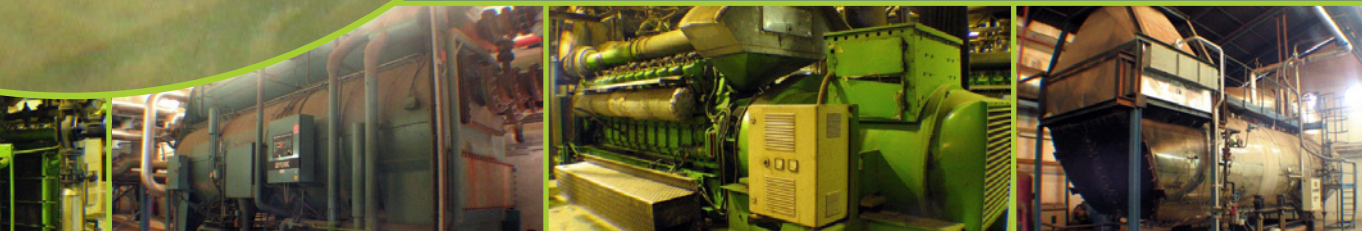
## 22.4 MW Complete Gas CoGeneration Plant

Andújar, Jaén - Spain



### Featuring:

- 8x Jenbacher JMS 620 GS-NL. 2801 KW each.
- Six of them model J620GS-E02
- Two of them model J620GS-E
- With LEROY SOMER alternators. Type LSA 54 L 85-4P, 1500 rpm at 2724 KW/hr Years: 5 from 11/1998 & the other 3 from 2009 and 2011
- York Millemium single stage Absorption Chiller
- 2x Boilers of 6600 Kg/hr at 14 bars with economisers from 2012
- 8x Coolers TERMOVEN of 15000 m<sup>3</sup>/h. Year 2011
- 8x 3400 KVA Transformers



**September 9th, 10:00 am CEST - September 10th, 10:00 am CEST**

**Location:** Carretera Andújar-Torredonjimeno, 68, Poligono Industrial la Fundición 23740 Andújar, Jaén

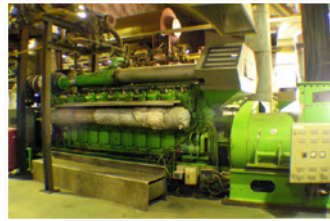
**Offers prior to the auction are welcome!**

**KEY ASSETS**



**Jenbacher JMS 620 GS-NL Cogeneration Motor**

1- Jenbacher motor. Type: J620GS-E02. Power: 2801 kW. Hours: 6240 . Serial No. 3154751. Weight: 15,000 KG. 2- Leroy Somer alternator. Type: LSA 54VL10-4P. 1500 rpm. Power: 2704 kW. Weight: 9070 KG. Mfg. Year 2011.



**Jenbacher JMS 620 GS-NL Cogeneration Motor**

1- Jenbacher motor. Type: J620GS-E02. Power: 2801 kW. Hours: 46152 . Serial No. 2908367. Weight: 15,000 KG. Major overhaul with 30,000 hours. 2- Leroy Somer alternator. Type: LSA 54VL85-4P. 1500 rpm. Power: 2724 kW. Weight: 8360 KG. Mfg. Year 1998.



**Jenbacher JMS 620 GS-NL Cogeneration Motor**

1- Jenbacher motor. Type: J620GS-E02. Power: 2801 kW. Hours: 45227 . Serial No. 2908362. Weight: 15,000 KG. Major overhaul with 30,000 hours. 2- Leroy Somer alternator. Type: LSA 54VL85-4P. 1500 rpm. Power: 2724 kW. Weight: 8360 KG. Mfg. Year 1998.



**Jenbacher JMS 620 GS-NL Cogeneration Motor**

1- Jenbacher motor. Type: J620GS-E02. Power: 2801 kW. Hours: 6212 . Serial No. 6378011. Weight: 15,000 KG. 2- Leroy Somer alternator. Type: LSA 54VL85-4P. 1500 rpm. Power: 2724 kW. Weight: 8360 KG. Mfg. Year 2009.



**Jenbacher JMS 620 GS-NL Cogeneration Motor**

1- Jenbacher motor. Type: J620GS-E. Power: 2801 kW. Hours: 46294 . Serial No. 3392383. Weight: 15,000 KG. Major overhaul with 30,000 hours. 2- Leroy Somer alternator. Type: LSA 54VL85-4P. 1500 rpm. Power: 2724 kW. Weight: 8360 KG. Mfg. Year 1998.



**Jenbacher JMS 620 GS-NL Cogeneration Motor**

1- Jenbacher motor. Type: J620GS-E02. Power: 2801 kW. Hours: 44703 . Serial No. 2908366. Weight: 15,000 KG. Major overhaul with 30,000 hours. 2- Leroy Somer alternator. Type: LSA 54VL85-4P. 1500 rpm. Power: 2724 kW. Weight: 8360 KG. Mfg. Year 1998.



**Jenbacher JMS 620 GS-NL Cogeneration Motor**

1- Jenbacher motor. Type: J620GS-E02. Power: 2801 kW. Hours: 43235 . Serial No. 2908361 Weight: 15,000 KG. Major overhaul with 30,000 hours. 2- Leroy Somer alternator. Type: LSA 54VL85-4P. 1500 rpm. Power: 2724 kW. Weight: 8360 KG. Mfg. Year 1998.



**Jenbacher JMS 620 GS-NL Cogeneration Motor**

1- Jenbacher motor. Type: J620GS-E. Power: 2801 kW. Hours: 7125 . Serial No. 2818692. Weight: 15,000 KG. 2- Leroy Somer alternator. Type: LSA 54VL85-4P. 1500 rpm. Power: 2724 kW. Weight: 8360 KG. Mfg. Year 2011



**Absorption Chiller**

York Millennium HW-12F1-50B Single stage absorption chiller. Input 90°C, Output 5°C. Mfg. Year 1998.



**Air Coolers**

Termoven CLA-2020/1 Lot: (11) Air Coolers. Capacity: 15000 m3/hr. Power: 205,6 kW. Mfg. Year 2011.Kg. Mfg. Year 2011.



**Boilers**

Volcano Lot: (2) Boilers. Capacity 6600 Kg/hr at 14 bars.



**Transformers**

Alkargo TCSI 3400/36 Lot: (8) Transformers. Capacity 3400 KVA each. Mfg. Year 1998.

