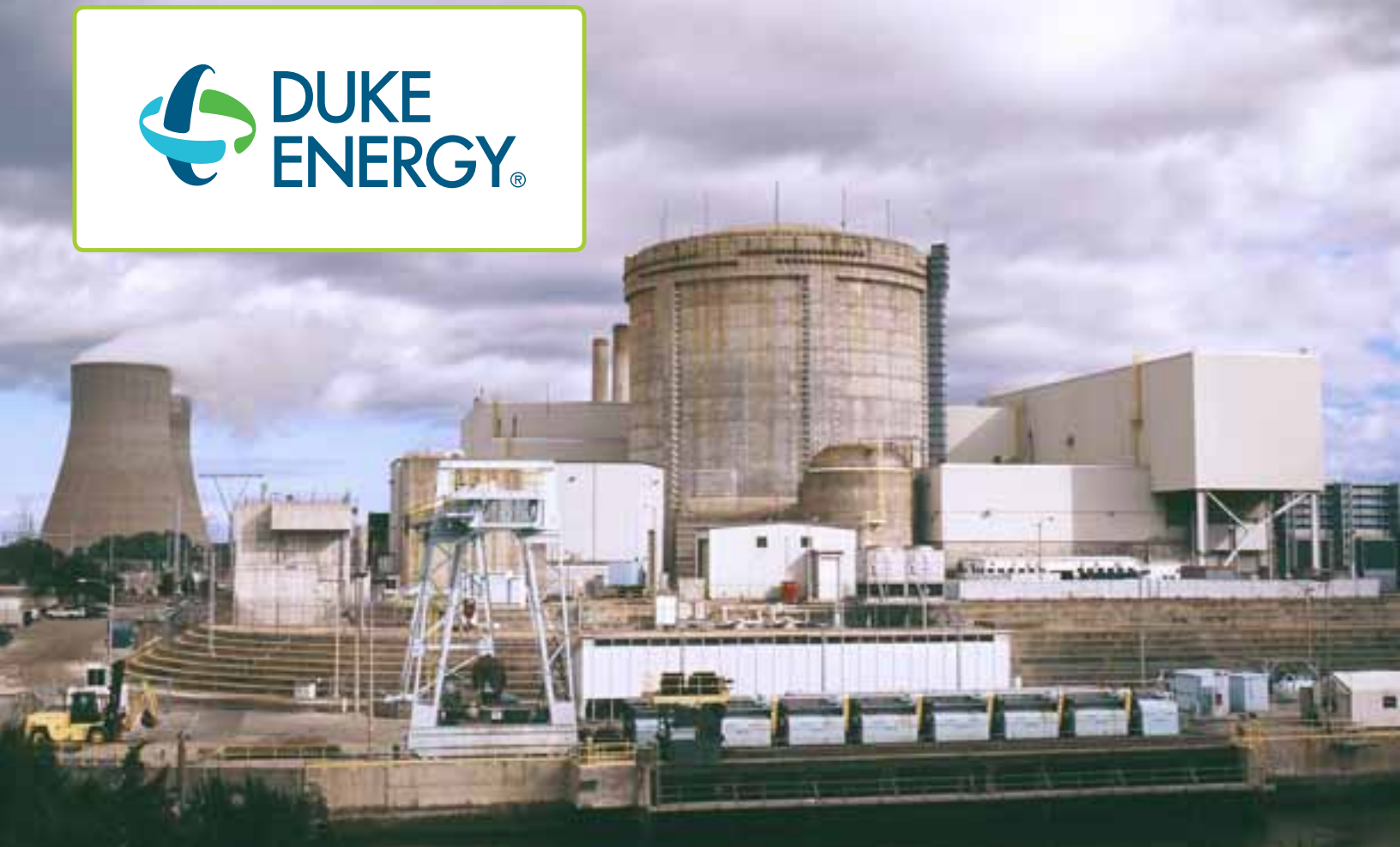


GLOBAL WEBCAST AUCTION

Crystal River, FL • September 24-26, 2014 • 10:00 am EDT



**Three Day Global Webcast Auction for Duke Energy's
Crystal River Nuclear Plant in Citrus County, Florida.**

**Sale Featuring Unused, Quality Surplus
Assets, MRO Inventory, Machinery and More.**

More Than 33,000 Catalog IDs (CAT IDs) With More Than 1.3 Million Individual Items.



HERITAGE
GLOBAL PARTNERS
ASSET ADVISORY & AUCTION SERVICES

For more information including a photo gallery,
equipment list, and more, please visit

www.hgpauction.com

Items subject to prior sale. Buyers are advised &
encouraged to inspect equipment and read
all Terms and Conditions prior to auction.

DUKE ENERGY'S CRYSTAL RIVER NUCLEAR PLANT AUCTION



ABB TRANSFORMER ABB 400 MVA GSU STATION TRANSFORMER, SINGLE PHASE, 60 HZ, OIL IMMERSED OFAF, 500KV-21KV, DWG XV12165004-D, YEAR BUILT 2007, SHIPPING MASS 400,000 LBS



AUXILIARY FEEDWATER PUMP, 900 HP MOTOR, 3510 RPM, 4000V, 800 GPM AT 3300 TDH - TOTAL DESIGNED SPEED



INDUCTION MOTORS GENERAL ELECTRIC 5KV85573446501 LOT TO INCLUDE (2) 2500 HP VERTICAL INDUCTION MOTORS TO INCLUDE MOBILE STANDS



LITTORQUE SMB-5 LOT TO INCLUDE (2) MOTOR OPERATORS, FWV-22 AND 23 SMB-5, EL 119



AIR REMOVAL SKID TO INCLUDE CONDENSER VACUUM PUMP AND MOTOR, 150 HP AND NASH 3004 VACUUM PUMP AND AIR HOLDING TANK



PUMP SKID INGERSOL RAND LOT TO INCLUDE (2) 600 HP RELIANCE ELECTRIC MOTORS, 5808S FRAME, 1192 RPM, 4000V, WEIGHING APPROX. 5100 LBS. EACH, SCP 1A AND 1B, SECONDARY COOLING UNITS

GLOBAL WEBCAST AUCTION : SEPT. 24TH, 10AM - 26TH, 6PM EDT



MOISTURE SEPARATOR REHEATER THERMAL ENGINEERING INTERNATIONAL LOT TO INCLUDE (4) 390-INCH BY 15-INCH MOISTURE SEPARATOR REHEATERS (MSRS)



TURBINE LUBRICATING OIL COOLER HOLTEC INTERNATIONAL TURBINE LUBRICATING OIL COOLER FOR TUBE BUNDLES, HEAT EXCHANGERS WITH NEW HEADS AND NEW COILS



SIEMENS HIGH PRESSURE TURBINE EQUIPMENT: ROTORS, UPPER AND LOWER HP INNER CYLINDERS, UPPER AND LOWER HP GUIDE BLADE CARRIERS, ASSEMBLY HARDWARE, HP GLAND CASINGS, ASSEMBLY PARTS, INLET SEALS, THREADED RINGS AND TURBINE HARDWARE



MGP INSTRUMENTS MONITORING SYSTEM SKID, (2) PUMPS, (2) 1/2 HP BALDOR MOTORS



C+D BATTERIES LOT TO INCLUDE (116) C+D BATTERIES TO INCLUDE CHARGING STATION, 125V DC, 3 PH, 60 HZ, MODEL ARR130K300K



HEAT EXCHANGERS YUBA LOT TO INCLUDE (2) HEAT EXCHANGERS/ FEEDWATER HEATERS

CONTACT

David Barkoff

Tel: 650.759.2242

Email: dbarkof@hgpauction.com

DUKE ENERGY'S CRYSTAL RIVER NUCLEAR PLANT AUCTION



ISO PHASE BUSS DUCT COOLING SKID



FAIRBANKS MORSE AND CO. 38 N-D8 1/8 DIESEL ENGINE BLOCK WITH GENERATOR, 713 HP, 720 RPM



HEAT EXCHANGERS YUBA, SPX HEAT TRANSFER LOT TO INCLUDE (2) HEAT EXCHANGERS, TEST PRESSURE PSI SHELL 445, TUBES 650, TEST TEMPERATURE MIN DEGREE F SHELL 70, TUBES 70, CUSTOMER ITEM EH-5A, MFG. S/N 10-H-468-1A, FEEDWATER HEATERS



SIEMENS ROTARY AND STATIONARY BLADES, LOW PRESSURE TURBINE



COLTEC IND. INC, ABB 16706850 TURBOCHARGER, ABB TURBO SYSTEMS LTD. TYPE VTC304-13, HZTL 428 765 P2



To view a complete asset list, visit our website @ www.hgpauction.com

GLOBAL WEBCAST AUCTION : SEPT. 24TH, 10AM - 26TH, 6PM EDT



TYCO TB-3000-1 TYCO TB-3000-1 VALVE RESURFACING MACHINE WITH PRESSURE TESTING CAPABILITIES, SINGLE STATION TEST BENCH



MICRO VU M14 OPTICAL COMPARATOR



KALAMAZOO 13AW HORIZONTAL BANDSAW 13" ROUND CAP



CASE 580 SUPER E BACKHOE, 580 SUPER E, 4,526 HOURS



EOF TRAINING EQUIPMENT FLOW LOOP MODEL SIMULATOR OF REACTOR BUILDING WORKING COMPONENTS



CHILLERSTRANE RTWD200F2A03 LOT TO INCLUDE (2) 200T HELICAL ROTARY CHILLERS, 460V, (2) PASS CONDENSER WITH 8" FLG CONN, (2) 18 X 18 ELASTOMERIC ISOLATION PADS



HANKISON 1915 BREATHING AIR PURIFIER



SULLAIR 32-25014 AIR COMPRESSOR SKID, MFG 1980, P/N 41503 WITH 250 HP MOTOR AND INTAKE STATION AIR COMPRESSOR TANK

Bid Live Online at:



A BUYER'S PREMIUM WILL APPLY AT THIS SALE

CONTACT

David Barkoff

Tel: 650.759.2242

Email: dbarkof@hgpauction.com

DUKE ENERGY'S CRYSTAL RIVER NUCLEAR PLANT AUCTION



COMPLETE LISTING ONLINE MANY OTHER ASSETS INCLUDING

LARGE QUANTITIES OF PUMPS, VALVES AND ACTUATORS, MOTORS AND ENGINES, POWER GENERATION, DISTRIBUTION, ELECTRICAL EQUIPMENT, PARTS, ACCESSORIES AND MUCH MORE!

BIDDERS ARE WELCOME TO BID ON-SITE AT THE AUCTION OR ONLINE VIA BIDSPOTTER.COM



TRAINING MOCK UP DRY VESSEL BABCOCK & WILCOX CO BY DESCRIPTION LOT CONTAINS ITEMS: (1-ASSEMBLY, HEAD, UPPER AND UPPER SHELL, FOR OTSG TRAINING MOCK-UP), (1- SHELL, LOWER, FOR OTSG TRAINING MOCK-UP), (1- LOWER FRAME FOR OTSG TRAINING MOCK UP), (1- LOWER COMPONENTS, FOR OTSG TRAINING MOCK-UP)

SQUIRREL CAGE INDUCTION MOTOR ELECTRIC MACHINERY HEAVY DUTY MOTOR, PUMP, 2000 HP, 3 PH, 4000V, 60 HZ, 1185 RPM, 5523V FRAME, CL. B NS, 1.15 SF, 250 AMP



HEAT EXCHANGER YUBA HEAT TRANSFER DIV INLET CHANNEL HEAD, HEAT EXCHANGER, TYPE AEL



REGULATOR VALVE WESTINGHOUSE 90694 REGULATOR VALVE, P/N-4918D99G01 COMPLETE ASSEMBLY



To view a complete asset list, visit our website @ www.hgpauktion.com

GLOBAL WEBCAST AUCTION : SEPT. 24TH, 10AM - 26TH, 6PM EDT



INDUCTION MOTOR GENERAL ELECTRIC 5KV85573446501
INDUCTION MOTOR, PUMP, 2500 HP, 3 PH, 4000V, 60 HZ,
1186 RPM, 8557P70 FRAME, WPII ENCLOSURE, CLASS F
INSULATION, 1.15 SF, 315A, NEMA CODE F



SQUIRREL CAGE INDUCTION MOTOR ELECTRIC
MACHINERY HEAVY DUTY MOTOR, PUMP, 2000 HP, 3
PH, 4000V, 60 HZ, 1185 RPM, 5523V FRAME, CL B
NS, 1.15 SF, 250 AMP



HEAD STODDARD HEAD, CHANNEL, INLET OR OUTLET, WITH HINGED COVER AND 12"
INSPECTION PORT



CHANNEL CAROLINA ENERGY SOLUTIONS CHANNEL, HEAT EXCHANGER, RETURN
REAR ASSEMBLY, SERVICE WATER HEAT EXCHANGER MFG DATE 2011



HEAT EXCHANGER API HEAT TRANSFER 1503-06-078-001 LOT CONTAINS 2 HEAT EXCHANGERS, BASCO, SPECIAL
TYPE 500, 1 PASS ASSEMBLY, 3/8" TUBES, 3" SPA, DATE OF MFG. 6/2011



HEAD SULZER BINGHAM PUMP INC.
5110118 HEAD 75, DISCHARGE, FOR
BW PUMP 18 X 34B TYPE VCM



CHANNEL CAROLINA ENERGY SOLUTIONS CHANNEL, HEAT EXCHANGER,
FRONT INLET/OUTLET



GATE VALVE M & H VALVE CO. LOT CONTAINS 2 GATE VALVES, 10"175 MH HW BB

CONTACT

David Barkoff

Tel: 650.759.2242

Email: dbarkof@hgpauction.com

DUKE ENERGY'S CRYSTAL RIVER NUCLEAR PLANT AUCTION



VALVE ASSEMBLY FISHER VALVE ASSEMBLY, 3 WAY, 3 IN, BW, SCH 40, ANSI CL 150, SA351, GR CF8M, TYPE 667, SIZE 60 PNEUMATIC ACTUATOR, ONE 3 IN INLET, TWO 3 IN OUTLETS



FIRE HYDRANT CLOW CORP 2545 LOT CONTAINS 2 FIRE HYDRANT: ASSEMBLY, UL/FM APPROVED, CLOW MEDALLION 2545, 5 1/4" WITH 4'6" BURY



VALVE CRISPIN VALVE AL41 LOT CONTAINS 2 VALVES, COMPLETE, AIR & VACUUM SERVICE, 4"-125#, CAST IRON



PUMP INGERSOLL-DRESSER PUMP PUMP, WITH 7.5 HP MOTOR, 3X1.5X6 VOC2 3600RPM.



VALVE ASSEMBLY MASONELAN 88N-41445A VALVE ASSEMBLY , ANGLE, 8 IN SCH 80 INLET X 12 IN SCH 60 OUTLET, ASME SA-216, GRADE WCC, MFG. 2011



GATE VALVE WILLIAMS 30W-2 C5 60 (12") GATE VALVE, FLEXIBLE WEDGE, 12 IN, BUTT WELD, SCHEDULE 40, ANSI CLASS 300, CHROME-MOLY, ASTM A217, GR C5, TRIM 8, MANUAL, OS&Y



PEERLESS PUMP, SEPTIC SEWAGE VCS LLC4B

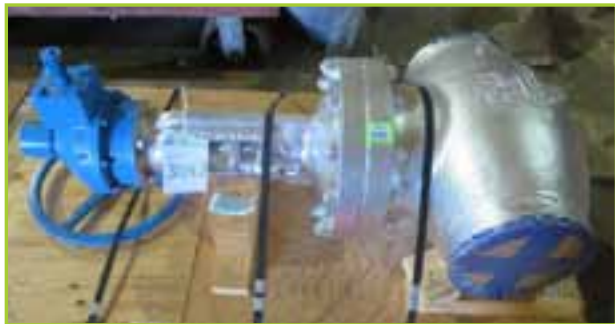


GLOBE ANGLE VALVE EDWARDS VALVE CO 735277 GLOBE ANGLE VALVE, 10 IN, BUTT WELD, CLASS 2, 2500 PSIG, SA351, GRADE CF8M, MANUAL, OS&Y, STANDARD OR FULL PORT, DATE OF MFG: 8/2011



To view a complete asset list, visit our website @ www.hgpaucauction.com

GLOBAL WEBCAST AUCTION : SEPT. 24TH, 10AM - 26TH, 6PM EDT



GATE VALVE VELAN VALVE B16-1064C-06TS VALVE, GLOBE, 10 IN, SCHEDULE 40, BUTT WELD, ANSI CLASS 300, CHROME-MOLY, ASTM A217, GR WC9, MANUAL



GATE VALVE CRANE-ALOYCO INC 47-1/2-XU-F VALVE, GATE 6"150 47-1/2XU-F .A216 WCB BODY, BWE



VALVE CRANE-ALOYCO INC CA00705 VALVE, AC 3"600 180-1/2U.A216 WCB BODY, BWE



VALVE RUGGLES-KLINGEMANN MFG CO FIG K62526 VALVE, REGULATING, RELIEF / GOVERN, 4 IN, 300 LB, CS BODY, RUGGLES KLINGMANN FIG K80510



GATE VALVE ANCHOR DARLING 4002221 GATE VALVE, 10 IN, BUTT WELD, CLASS 2, 2500 PSIG, SA351, GRADE CF3M, MANUAL, OS&Y, STANDARD OR FULL PORT DATE OF MFG: 8/2011



GATE VALVE CLOW CORP F6136 GATE VALVE, 10", 200 PSI WORKING PRESSURE, RESILIENT WEDGE OS&Y DESIGN. CI BODY FLGD ENDS



HIRATA VALVE CO. 4CSV-V-700 GATE VALVE, 6"900 HIRA BW HW, A216WCB BODY



CRANE-ALOYCO INC 175-1/2X VALVE , DC 8"600 175-1/2X CS.



PUMP WEMCO F10K-SS PUMP, COMPLETE ASSEMBLY, 10 X 10 WEIR / HIDROSTAL F10K-SS-F2W PUMP



FLUID PUMP L12F 120 PSI MAX PRESSURE 1.5 PPM



CANBERRA STORAGE MODULE



WATER PUMP COLT IND. P/N-16602931



ROCKWELL LOT, 5 CARBON STEEL VALVES

CONTACT

David Barkoff

Tel: 650.759.2242

Email: dbarkof@hgpauction.com

DUKE ENERGY'S CRYSTAL RIVER NUCLEAR PLANT AUCTION



LIFTING WESTINGHOUSE BYDESCRIPTION LIFTING DEVICES TBTG-1



J HOOKS FOR D RING WALLS LOT CONTAINS 5 PALLETS CONTAINING (11) 'J' HOOKS FOR 'D' RING WALLS



RECTIFIER INTEGRATED RECTIFIER TECH ADASET12100BLPC13W RECTIFIER, ASSEMBLY, CATHODIC PROTECTION, AIR COOLED, 480V, 60 HZ, 3 PH AC INPUT



HORIZONTAL BAND SAW JET J7015 HORIZONTAL BAND SAW 1 1/2" HP MOTOR



CHAIN HOIST CM HOIST 646-4627 LOT CONTAINS 3 CHAIN HOIST, CM HOIST SERIES 646, 3 TON, 20' LIFT, WITH LOCKING FINGER ON HOOK



OPEN MARKET 4-MSR-V-145 SWING CHECK VALVE, A216WCB, BWE, DC 6"900 HIRA CS BWYR 1979



LIFTING RIG ASSEMBLY LIFTING RIG ASSEMBLY 10,000LB CAPACITY.



HORIZONTAL BAND SAW WILTON 3410 HORIZONTAL BAND SAW 8/12



QUINCY 325L AIR COMPRESSOR



PIPE THREADER RIDIG 1224 ELECTRIC PIPE THREADER



HYDRATIGHT SWEENEY PUMP WITH CASE , HYDRAULIC SYSTEM PUMP



To view a complete asset list, visit our website @ www.hgpauktion.com

GLOBAL WEBCAST AUCTION : SEPT. 24TH, 10AM - 26TH, 6PM EDT



FLOW METERS RADECO LOT CONTAINS 5 FLOW METERS



COMPRESSOR CARRIER CORP MDL06DM8186AC0600 LOT CONTAINS 2 COMPRESSORS



TORIT 64 DUST COLLECTOR, TORIT 3/4HP



CASK LOT CONTAINS 4 CASKS, LEAD PASS EQUIPMENT



WESTINGHOUSE FIXTURE, TURBINE RIGGING



SPECTROMETER PERKIN-ELMER ZEEMAN 5000 SPECTROMETER



VANE FLUIDIC TECHNIQUES INC VANE, STRAIGHTENING, SPOOL PIECE, FLANGED BOTH ENDS, 16 IN, 300 LB, ASTM A106



EXPANSION JOINT TEMP FLEX LOT CONTAINS 2 EXPANSION JOINTS, 12"



SMOG-HOG PIONEER STANDARD ELECTRON 515156-1187 INDUSTRIAL AIR CLEANER



PUMP CRANE CO, CHEMPUMP DIV GB-3K-1S PUMP



FAIRBANKS MORSE 16 602 931 PUMP



FILTER SYSTEM HARVARD CORPORATION 87T LOT CONTAINS 3 FILTER SYSTEMS

CONTACT

David Barkoff

Tel: 650.759.2242

Email: dbarkof@hgpauction.com

DUKE ENERGY'S CRYSTAL RIVER NUCLEAR PLANT AUCTION



CARRIER 50TJ-006-601 PORTABLE AC UNIT, AIR CONDITIONER, SELF CONTAINED, 5 TON, 460 VOLT



BRY-AIR MP-175 DEHUMIDIFIER, 175 CFM, 208-240V / 1PH / 60 HZ, 5.9 LB/HR, WITHOUT WEATHERPROOFING



TEMPORARY POWER CART TEMPORARY POWER CART, TPBD-52, 1 MAIN SWITCH, 4 DISCONNECTS & TRANSFORMER



TEMPORARY POWER CART TEMPORARY POWER CART, TPBD-32, 3- 400AMP DISCONNECTS & 1 - 200AMP DISCONNECT



FILTER SYSTEM COMPONENTS CORP PCC112001HT49 LOT



TEMPORARY POWER CART TEMPORARY POWER CART WITH 480V 600AMP 1 MAIN SWITCH, AND 6 DISCONNECTS



TEMPORARY POWER CART TEMPORARY POWER CART, TPBD-42, 1 MAIN SWITCH AND 9 DISCONNECTS



JOY MFG CO NPR 85766 LOT CONTAINS 2 BLADES



PHONE GAI-TRONICS 770-101-K91-020 LOT CONTAINS 4 PHONES WITH PORTABLE W/AMP SPEAKER, 3 IN ORIGINAL BOX



To view a complete asset list, visit our website @ www.hgpaucauction.com

GLOBAL WEBCAST AUCTION : SEPT. 24TH, 10AM - 26TH, 6PM EDT



CANTILEVER RACKS LOT CONTAINS 18 CANTILEVER RACKS UPRIGHTS WITH 72 - 36" ARMS AND 48-CROSS MEMBERS



CANTILEVER RACKS LOT CONTAINS 14 CANTILEVER RACKS UPRIGHTS WITH 252- 24" ARMS & 48 CROSS MEMBERS



LOT TO INCLUDE (1) CART W/ ASSORTED HAND TOOLS



HOSE 2 BARRELS OF HOSE, DRAIN, 600 FT, BLUE LAY FLAT, OP-209B SECONDARY DRAIN DOWN.



PORTABLE AC UNIT TRANE TCH060C400BC, SELF CONTAINED, 5 TON, 460 VOLT



SMOKE EJECTOR NEWTONS FIRE & SAFETY EQU P164SE LOT CONTAINS 4 SMOKE EJECTORS, SUPER VAC, 110V, 16"



LUMBER LOT CONTAINS 10 BUNDLES OF LUMBER: (9 -BUNDLES 2 X 6 X 16' LUMBER), & (1-BUNDLE OF 2 X 4 X 16' LUMBER)



HOFFMAN ENC2178S LOT CONTAINS 3 NETWORK CABINETS



8" SESA BRAKE WHITING CORP 300482C LOT CONTAINS 4 BRAKES, 8" SESA BRAKE, W/SOLENOID



PALLET RACKING LOT CONTAINS 64 SECTIONS WITH MINIMUM 3 SHELVES EACH AND 1 SECTION 8FT WIDE WITH 4 SHELVES

CONTACT

David Barkoff

Tel: 650.759.2242

Email: dbarkof@hgpauction.com



AUCTIONEER'S NOTE

HGP is pleased to be selected to conduct this Global Webcast Auction for:

Duke Energy's Crystal River Nuclear Plant

ABOUT THE SALE

- Heritage Global Partners will conduct a three-day global webcast auction sale of all assets Sept. 24 – Sept. 26, 2014.
- The auction will be held live and via webcast at the Plantation on Crystal River located at 9301 W. Fort Island Trail, Crystal River, FL 34429 USA.
- Prior to bidding live in person at the Plantation on Crystal River, participants must register on site in the Magnolia room and/or during the preview.
- Prior to bidding live via the webcast, participants must register through BidSpotter.
- Participants are not required to attend the Sept. 22 – 23 preview and inspection to place bids in the live and webcast auction Sept. 24 – 26.
- The auction will start each day at 10 a.m. Eastern Standard Time.



Scan this QR Code with your smartphone for More Information.

Contact Information

David Barkoff, Tel: 650.759.2242
Email: dbarkof@hgpauction.com

A BUYER'S PREMIUM WILL APPLY AT THIS SALE

For more information including a photo gallery, equipment list, and more, please visit us online at www.hgpauction.com. Items subject to prior sale. Buyers are advised & encouraged to inspect equipment and read all Terms and Conditions prior to auction.



Assets Formerly of Duke Energy

Featuring Unused, Quality Surplus Assets, MRO Inventory, Machinery and More.

GLOBAL WEBCAST AUCTION

Starting: September 24, 2014 – 10:00 am EDT
Ending: September 26, 2014 – 6:00 pm EDT

The lots will be called as follows:

Wednesday, Sept. 24 (Day 1): Lot 1 – Lot 1217.
Thursday, Sept. 25 (Day 2): Lot 1300 – Lot 2828.
Friday, Sept. 26 (Day 3): Lots 3000 and higher

AUCTION LOCATION

9301 W Fort Island Trail, Crystal River, FL 34429

PREVIEW AND INSPECTION

- Heritage Global Partners will conduct a two-day public preview and inspection of the assets on Sept. 22 and Sept. 23, 2014, from 9 a.m. to 4 p.m. Eastern Standard Time.
- The preview will be held at Duke Energy's Crystal River Energy Complex located at 15760 W. Power Line St. Crystal River, FL 34428 USA.
- **IMPORTANT:** To attend the preview, participants must have completed and returned a site access form by Sept. 18, 2014, at 3 p.m. Eastern Standard Time.
- Participants will not be allowed on complex property without a completed form. No Exceptions.
- Individuals must wear closed-toe, flat walking shoes. Work boots are preferred. Do not wear open-toe shoes, sandals, flip flops, high heels or ballet flats. Also do not wear skirts, capris, shorts or tank tops.
- The following lot series 1200 and 1400 are not accessible for preview.

GLOBAL HEADQUARTERS

Hacienda Del Mar
12625 High Bluff Drive
San Diego, CA 92130
Phone: (877) 303.8040
Fax: (866) 388.8595

FIRST CLASS MAIL

POSTMASTER: Dated Material.
Please Deliver Promptly.

Presorted First Class Mail
U.S. Postage
PAID
San Diego, CA
Permit No. 00

Starting: September 24, 2014 – 10:00 am EDT
Ending: September 26, 2014 – 6:00 pm EDT
Location: 9301 W Fort Island Trail, Crystal River, FL 34429

For complete Terms of Sale, visit our website at:

www.hgpauction.com

AFFILIATIONS

