

TWO DAY

# GLOBAL ONLINE AUCTION

STARTING: June 19, 5:00 am ENDING: June 20, 3:00 pm EDT

LOCATION:

328 Georgia Pacific Complex Rd., Monticello, GA 31064

Assets formerly of:



## Georgia-Pacific



# Trucks, Loaders, Tractors, Graders, Tanks, and Other Facility Equipment

## No Longer Required Due to Plant Closure



**Heritage Global Partners**

Asset Advisory and Auction Services  
*A Legacy since 1937*

[www.hgpauction.com](http://www.hgpauction.com)



# Heritage Global Partners

Asset Advisory and Auction Services

*A Legacy since 1937*

## 2 DAY - GLOBAL ONLINE AUCTION

# JUNE 19-20, 2012

TUESDAY, 11:00 am - WEDNESDAY, 2:00 pm EDT

### AUCTIONEER'S NOTE:

HGP is pleased to be selected to conduct this Global Online Auction of assets formerly of Georgia Pacific.

This Global Online Auction features late model, well maintained Construction and Earth Moving Equipment, No longer required by Georgia Pacific.

Please view our website at [www.hgpauktion.com](http://www.hgpauktion.com) for the bidding instructions and the full terms of the sale. Thank you for your interest, and we look forward to providing you quality equipment sales and World Class Service.

### PUBLIC INSPECTION AND PREVIEW:

Date/Time:

**Monday, June 18** (9:00am – 4:00pm)  
or by appointment.

Location:

**328 Georgia Pacific Complex Road  
Monticello, GA 31064**

### ADDITIONAL INFORMATION:

For more information including a photo gallery, equipment list, terms and conditions of sale and more, please visit:

## [www.hgpauktion.com](http://www.hgpauktion.com)

Buyer's Premium: 15% cash buyers; 18% for credit card purchasers (Refer to Term 7 in the Auction Terms and Conditions for details).

SALE WILL BE CONDUCTED IN ENGLISH  
AND WILL ACCEPT US CURRENCY ONLY



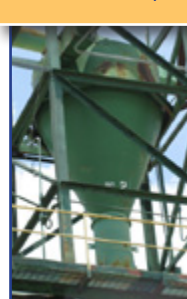
### ROYAL 1973 CHIP BIN

Three door, frame approx 15' wide x 48' long



### PEERLESS 1999 DRY WASTE BIN

Three door, frame approx 15' wide x 48' long



**GLOBAL ONLINE SALE OF LATE MODEL, WELL MAINTAINED CONSTRUCTION AND EARTH MOVING EQUIPMENT, NO LONGER REQUIRED BY GEORGIA PACIFIC**



GEORGIA PACIFIC : Replicator Systems



**MACK R6865T**

1986 Econodyne, Chelsea PTO, Merritt headache rack, Bartlett hydraulic lifting fifth wheel, two 75 gal fuel tanks, tires 11R22.5



**FORD F-800**

1987 Dump Truck, mileage 23,086, 5spd transmission, GVW 23K, engine 3T0-4V, tires 10.00x20





Georgia-Pacific

# GLOBAL ONLINE SALE OF LATE MODEL, WELL MAINTAINED CONSTRUCTION AND EARTH MOVING EQUIPMENT, NO LONGER REQUIRED BY GEORGIA PACIFIC

GEORGIA PACIFIC : Packaging and Boxing Machines



### CATERPILLAR 980G

Log loader, powered by 3406 Caterpillar, max weight 82,600, hours reading 64,800

### LETOURNEAU 2592

40 Ton, 1978 powered by Cummins Model NTA360CBC-1, 360 hp



### LETOURNEAU 2792-B

60 ton, 1976 powered by Cummins Re con 6/05 450hp, model KT 19C, hours 75,000 est

To obtain more information including scheduling a site preview, please visit [www.hgpauction.com](http://www.hgpauction.com) or Contact **David Weiss** at **+1.561.210.5921** or Email [dweiss@hgpauction.com](mailto:dweiss@hgpauction.com)

**GLOBAL ONLINE SALE OF LATE MODEL, WELL MAINTAINED CONSTRUCTION AND EARTH MOVING EQUIPMENT, NO LONGER REQUIRED BY GEORGIA PACIFIC**



**HUSKY BRUTE XL235PF**  
Husky Brute XL235PF 1989 crane powered by Cummins 48TA-110 2200, 110 hp, swivel base, approx 40' reach with rotating grapple



GEORGIA PACIFIC : Printing machines / Finishing Equipment



Georgia-Pacific

# GLOBAL ONLINE SALE OF LATE MODEL, WELL MAINTAINED CONSTRUCTION AND EARTH MOVING EQUIPMENT, NO LONGER REQUIRED BY GEORGIA PACIFIC

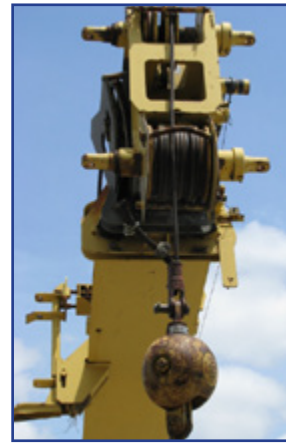
GEORGIA PACIFIC : Applicator Machines and Cleaning Systems



**JLG 600AJ 2004 MAN LIFT**  
horizontal reach 39.74 ft, max platform height 60ft, max capacity 500lb



**GROVE RT-528C**  
1995, crane all terrain, boom is RT500C, jib length 21m, max lift 28ton

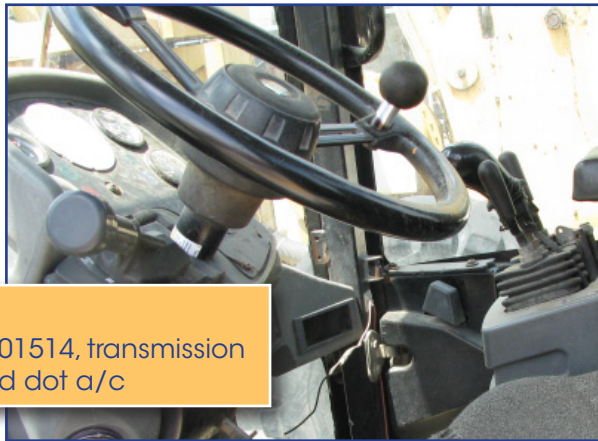


**MASSEY FERGUSON**  
4 cyl gas engine, w/pto, 4 spd manual transmission

**GLOBAL ONLINE SALE OF LATE MODEL, WELL MAINTAINED CONSTRUCTION AND EARTH MOVING EQUIPMENT, NO LONGER REQUIRED BY GEORGIA PACIFIC**



**CATERPILLAR 966**  
1989 Loader, engine does not run



**CATERPILLAR IT38G**  
2007 Loader, engine 3126 serial # 55K01514, transmission serial # 7zx06072, tires 20.5R25 XHA, red dot a/c



**CATERPILLAR 950B**  
1986 Loader, engine 3304cat Diesel, serial # 07z03478, transmission serial # 4ra02427, 4cu yd bucket

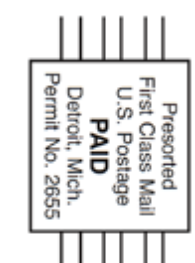
GEORGIA PACIFIC : Support Equipment

# ASSET ADVISORY AND AUCTION SERVICES



## Heritage Global Partners

Asset Advisory and Auction Services  
*A Legacy since 1937*



### Global Headquarters

Hacienda Del Mar  
12625 High Bluff Drive  
San Diego, CA 92130  
Ph: 877-303-8040  
Fx: 866-388-8595  
[www.hgpauction.com](http://www.hgpauction.com)

Forwarding Service Requested



## Georgia-Pacific

**Trucks, Loaders, Tractors, Graders, Tanks,  
and Other Facility Equipment**  
*No Longer Required Due to Plant Closure*

# GLOBAL ONLINE AUCTION : JUNE 19, 5:00 AM EDT



Georgia-Pacific

**Trucks, Loaders, Tractors, Graders, Tanks,  
and Other Facility Equipment**  
*No Longer Required Due to Plant Closure*



### AFFILIATIONS



©2012 HERITAGE GLOBAL PARTNERS. ALL RIGHTS RESERVED  
Complete Terms & Conditions are contained in the Sale Catalog and  
on the website at [www.hgpauction.com](http://www.hgpauction.com).  
Please review the Terms and Conditions prior to placing bids on any items.  
Global Headquarters: San Diego, California