

GLOBAL ONLINE AUCTION

HUGE QUANTITY OF STONE & RAW MATERIAL INVENTORY



**4 Day Major Global Online Auction On Behalf of the
Largest Stone Fabricator In The Southeast.**

Featuring Assets From 5 Sites In NC, SC, TN and GA

Starting: Sept. 19th, 2016 (7am EDT) | **Ending:** Sept. 22nd, 2016 (12pm EDT)



HERITAGE
GLOBAL PARTNERS
ASSET ADVISORY & AUCTION SERVICES

For more information including a photo gallery,
equipment list, and more, please visit

www.hgpauction.com

Items subject to prior sale. Buyers are advised &
encouraged to inspect equipment and read
all Terms and Conditions prior to auction.

4 DAY MAJOR GLOBAL ONLINE AUCTION ON BEHALF OF SEVEN STONE

ASSETS FROM 5 SITES IN NC, SC, TN AND GA - COMPLETE LISTING AVAILABLE ONLINE @ HGPAUCTION.COM



CMS SPEED-2-TAVOLE TWIN-TABLE CNC ROUTER [S/N-3254 ; YEAR-2003]. WITH GE FANUC PANEL #1 CNC CONTROL ; (ALSO INCLUDES EXTERNAL IBM MT-M-9964-ABU PC COMPUTER, DELL 17" MONITOR AND HP 1020 PRINTER) ; 18-HP ; 6,000-RPM ; 40-TAPER SPINDLE ; (2 TOTAL WORK TABLES) FRONT TABLE WORKING AREA 64"X142" AND BACK TABLE WORKING AREA 81"X142" ; CARTER LASER INDICATOR ; 52 STATION TOOL CHANGER AND 13 RESTING PODS ; APPROXIMATELY 5-HP VACUUM PUMP ; COOLANT SYSTEM WITH PUMP



ANDERSON GROUP STRATOS/PRO BRIDGE-TYPE CNC ROUTER [S/N-FAANCST04161 ; YEAR-2015]. [10- POSITION AUTO TOOL CHANGER ; MULTI-FUNCTION ; MAX SPINDLE SPEED 24,000-RPM ; 61" X 145" TABLE ; CONTROLLER CABINET WITH INTERNAL WINDOWS BASED PC CONTROL ; (ALSO INCLUDES EXTERNAL DELL OPTIPLEX-3010 PC COMPUTER AND DELL 22" MONITOR) ; TOSOKU PENDANT CONTROL ; WITH OPTIONAL FEED BELT CONVEYOR SECTION- 67" X 117" ; (2) BECKER 10-HP VACUUM PUMP



LÖFFLER KSL 100MG CNC TRAVELING EDGE POLISHER WITH SIEMENS SIMATIC C7 CNC CONTROL, (3) UPPER & (3) LOWER CHAMFERING HEADS EACH WITH APPROXIMATELY 2.6-HP WORK HEADS, (5) APPROXIMATELY 5-HP FACE POLISHING HEADS, 15' X 27.5" WORK TABLE WITH (8) HOLD-DOWNS & (8) ROLLER BED STRIPS, APPROXIMATELY 45' OVERALL TABLE TRAVEL, 9.84" MAXIMUM WORK THICKNESS. YR 2003

MARMO MECCANICA LCT 522 CAI - MO EDGE/BULLNOSE POLISHER [S/N-6796 ; YEAR-2004]. WITH APPROXIMATELY 3-HP FACING HEAD WITH 90° INDEX ; (2) APPROXIMATELY 2-HP BEVEL HEADS ; APPROXIMATELY 3-HP FACING HEAD WITH MECHANICAL READOUT OF POSITION ; (5) APPROXIMATELY 3-HP POLISHING HEADS ; 12" X 11' VERTICAL FLAT BELT CONVEYOR.

GLOBAL ONLINE AUCTION : SEPT. 19TH, 7AM - SEPT. 22ND, 12PM EDT
PREVIEW: SEPT. 19TH 9AM - 4PM OR BY APPOINTMENT - CONTACT AUCTIONEER FOR FURTHER INFORMATION



THIBAUT T108 BROKEN ARM ROUTER/POLISHER WITH 5-HP WORK HEAD, 42" THROAT, TYPE C 912, YR 1999, WITH 90" X 40" WORK TABLE



MARMO MECCANICA HTO 1/B PROGRAMMABLE BRIDGE SAW WITH APPROXIMATELY 20-HP SAW HEAD, 24" BLADE CAPACITY, 90° SAW HEAD TILT, APPROXIMATELY 15' SAW HEAD CROSS TRAVEL, APPROXIMATELY 14' SAW GANTRY TRAVEL, 5' X 10' POWER TILTING TABLE WITH MANUAL ROTATION, APPROXIMATELY 2- HP SAW HEAD AND GANTRY, LASER INDICATOR, PENDANT CONTROL. YR 2003



S MAXIMA 5000 TWIN-TABLE, 5-AXIS CNC ROUTER WITH PC-BASED CNC CONTROL, 18-HP 6,000-RPM 40- TAPER SPINDLE, 12' X 16.5', WORK TABLE, 12.5' X 16.5' X 23.6". YR 2008, LP-HFD LASER INDICATOR



CMS SPEED 2 TAVOLE TWIN-TABLE CNC ROUTER WITH GE FANUC PANEL I CNC CONTROL, 18-HP 6,000-RPM 40- TAPER SPINDLE, (2) 98" X 142" WORK TABLES, E-Z LASER INDICATOR, 52-STATION TOOL CHANGER, 6.4-HP VACUUM PUMP, COOLANT SYSTEM WITH PUMP, ALL RELATED RESTING PODS AND TOOLS INCLUDED. YR 2003, WITH DELL OPTIPLEX GX620 COMPUTER AND EASY STONE SOFTWARE VER. 4.5A8



CMS SPEED 2 TAVOLE TWIN-TABLE CNC ROUTER WITH GE FANUC PANEL I CNC CONTROL, 18-HP 6,000-RPM 40- TAPER SPINDLE, (2) 98" X 142" WORK TABLES, E-Z LASER INDICATOR, 52-STATION TOOL CHANGER, 6.4-HP VACUUM PUMP, COOLANT SYSTEM WITH PUMP, ALL RELATED RESTING PODS AND TOOLS INCLUDED. YR 2003.



PROFILEMATIC AUTO-MATIC V-GROOVER WITH APROX 7.5-HP SAW HEAD, (4) 7.5-HP SHAPER HEADS, 3/4-HP VARIABLE SPEED UPPER AND LOWER CATEPILLAR DRIVE MOTORS, DIGITAL SAW STATION HEIGHT INDICATORS, CONTROL PANELS, 3 BAG DUST COLLECTOR VACUUM SYSTEM, (4) ROLLER CONVEYOR TABLES.

Contacts:

Ty Lindley - Tel: (858) 847.0653
Email: tlindley@hginc.com

Nick Dove - Tel: (858) 847.0659
Email: ndove@hginc.com

4 DAY MAJOR GLOBAL ONLINE AUCTION ON BEHALF OF SEVEN STONE

ASSETS FROM 5 SITES IN NC, SC, TN AND GA - COMPLETE LISTING AVAILABLE ONLINE @ HGPAUCTION.COM



MARMO MECCANICA LCV MAGNUM EDGE POLISHER. WITH: (1) BEVEL WORK HEAD WITH APPROXIMATELY 3-HP MOTOR ; (6) POLISHING HEADS EACH WITH 3-HP MOTOR ; 2" X 8' VARIABLE SPEED FLAT BELT CONVEYOR WITH APPROXIMATELY 3/4-HP MOTOR, AND CONTROL PANEL



NUOVA MONDIAL MECCANICA FRESA MS45 CROSS-CUT MITER SAW, 12' [S/N-48526-14 ; YEAR-2014]. WITH 7-HP SAW MOTOR ; 15" BLADE CAPACITY ; (4) PNEUMATIC HOLD-DOWNS ; (2) FRONT ROLLER TABLES ; CONTROL PANEL WITH PROGRAMMABLE LOGIC CONTROL & DIGITAL READOUT OF RPM



KOMO VR 512 2-HEAD SINGLE TABLE CNC ROUTER WITH KOMO CNC CONTROL, KOMO 12-HP & 10-HP 18,000-RPM ROUTER HEADS EACH WITH KOMO 7.5-HP 18,000- RPM DRILL HEADS, (YR. 1995) 5' X 12' WORK TABLE, 5-HP VACUUM PUMP, SPEEDAIRE APPROX. 3- HP VERTICAL AIR COMPRESSOR, ULTRAFILTER AIR DRYER, MANUAL SETUP TABLE, WISE DUST COLLECTOR, 5-HP, 2-BAG, WITH ALL RELATED DUCT WORK.



CMS MAXIMA SINGLE-TABLE CNC ROUTER [S/N-2932 ; YEAR-2002]. WITH GE FANUC PANEL #1801-M CNC CONTROL (ALSO INCLUDES EXTERNAL DELL OPTIPLEX-730 PC COMPUTER AND LG 19" MONITOR) ; 18-HP ; 6,000-RPM ; 40- TAPER SPINDLE ; (1 WORK TABLE) TABLE WORKING AREA 102"X142" ; APPROXIMATELY 98" X 16' X 23.6" TRAVELS ; 26 STATION TOOL CHANGER AND 13 RESTING PODS ; APPROXIMATELY 5- HP VACUUM PUMP ; TRANSFORMER ; COOLANT SYSTEM WITH PUMP



STRIEBIG STANDARD II VERTICAL PANEL SAW WITH 7.5- HP SAW MOTOR, 12' MAX BLADE, 7' H X 15' W CUTTING CAPACITY, MANUAL BRIDGE TRAVEL.



ROFILEMATIC 4-HEAD PROFILER. WITH ALLEN BRADLEY PANELVIEW-300 PROGRAMMABLE LOGIC CONTROL ; (2) 7.5-HP V- GROOVING HEADS ; 3-HP BRUSH HEAD ; 7.5-HP COVE HEAD ; 7.5-HP WORK HEAD (CURRENTLY EMPTY) ; (2) 3/4-HP VARIABLE SPEED CATERPILLAR CONVEYOR DRIVE MOTORS ; POWERMATIC MODEL-075 3-HP 2-BAG PORTABLE DUST COLLECTOR ; (2) 20" X 10' GRAVITY FEED ROLLER CONVEYORS.

GLOBAL ONLINE AUCTION : SEPT. 19TH, 7AM - SEPT. 22ND, 12PM EDT
PREVIEW: SEPT. 19TH 9AM - 4PM OR BY APPOINTMENT - CONTACT AUCTIONEER FOR FURTHER INFORMATION



MARMO MECCANICA HTO 1/B PROGRAMMABLE BRIDGE SAW [S/N-5373 ; YEAR-1999]. WITH MARMO MECCANICA PROGRAMMABLE LOGIC CONTROL ; APPROXIMATELY 20- HP SAW HEAD ; 24" BLADE CAPACITY ; 90° SAW HEAD TILT ; APPROXIMATELY 12' SAW HEAD CROSS TRAVEL ; APPROXIMATELY 12' SAW GANTRY TRAVEL ; 60" X 115" POWER TILTING TABLE WITH MANUAL ROTATION ; APPROXIMATELY 2-HP SAW HEAD & GANTRY TRAVEL MOTORS ; SIDE-MOUNTED LASER INDICATOR ; TRANSFORMER ; PENDANT CONTROL



CMS MAXIMA CNC ROUTER, SINGLE TABLE, WITH FANUC SERIES 180 I-M CONTROL, C OR 4 AXIS WITH 360 ROTATION, 18HP 15,000RPM SPINDLE, 142"X118"X16" TRAVEL, 26 POSITION TOOL CHANGER, 90 DEGREE SAW ATTACHMENT, 5.5HP VACUUM PUMP, MFG. YR. 2014, COOLANT PUMP, ALL RELATED WORK RESTING PODS. 480V 3PH. W/ WORK TABLE TOOL BOX AND OTHER ITEMS.



ANDERSON STRATOS PRO -E/ANDI CNC ROUTER WITH FANUC CNC CONTROL, 11 HP 24000 RPM ROUTER HEAD, 2HP 9SPINDLE DRILL HEAD, 5'X12' WORK TABLE, 8 POSITION ROTARY TOOL CHANGER MFG. YR. 2009, BAR CODE SCANNER, BECKER 24HP OIL LESS VACUUM PUMP, MFG. YR. 2013. INCLUDES JET MODEL DC 1900 DUST COLLECTOR 3HP 230V 1PH, INCLUDES WORK STATION, MFG. YR. 2009



CMS MAXIMA SINGLE-TABLE CNC ROUTER [S/N-2932 ; YEAR-2002]. WITH GE FANUC PANEL #180I-M CNC CONTROL (ALSO INCLUDES EXTERNAL DELL OPTIPLEX-730 PC COMPUTER AND LG 19" MONITOR) ; 18-HP ; 6,000-RPM ; 40- TAPER SPINDLE ; (1 WORK TABLE) TABLE WORKING AREA 102"X142" ; APPROXIMATELY 98" X 16' X 23.6" TRAVELS ; 26 STATION TOOL CHANGER AND 13 RESTING PODS ; APPROXIMATELY 5- HP VACUUM PUMP ; TRANSFORMER ; COOLANT SYSTEM WITH PUMP.



MARMO MECCANICA LCT 522 CAI - MO EDGE/BULLNOSE POLISHER [S/N-6796 ; YEAR-2004]. WITH APPROXIMATELY 3-HP FACING HEAD WITH 90° INDEX ; (2) APPROXIMATELY 2-HP BEVEL HEADS ; APPROXIMATELY 3-HP FACING HEAD WITH MECHANICAL READOUT OF POSITION ; (5) APPROXIMATELY 3-HP POLISHING HEADS ; 12" X 11' VERTICAL FLAT BELT CONVEYOR



PARK INDUSTRIES YUKON PROGRAMMABLE BRIDGE SAW [S/N-3-04-1570 ; YEAR-2004]. WITH SIEMENS SIMATIC TOUCH-SCREEN PROGRAMMABLE LOGIC CONTROL ; 20-HP SAW HEAD MOTOR ; 24" MAXIMUM BLADE CAPACITY ; 6' X 11' PNEUMATIC TILTING WORK TABLE WITH MANUAL ROTATION ; 12' SAW HEAD CROSS TRAVEL ; 12' GANTRY TRAVEL . APPROXIMATELY 3-HP CROSS TRAVEL & GANTRY TRAVEL MOTORS, SIDE-MOUNTED LASER INDICATOR

Contacts:

Ty Lindley - Tel: (858) 847.0653
Email: tlindley@hginc.com

Nick Dove - Tel: (858) 847.0659
Email: ndove@hginc.com

4 DAY MAJOR GLOBAL ONLINE AUCTION ON BEHALF OF SEVEN STONE

ASSETS FROM 5 SITES IN NC, SC, TN AND GA - COMPLETE LISTING AVAILABLE ONLINE @ HGAUCTION.COM



FORD F-250 SUPER DUTY PICKUP, 2012, SINGLE CAB, V-8 6.2 LITER, AUTO TRANS, LONG BED, TOOL BOX, MILEAGE 131,465



FORD TRANSIT CONNECT 2011 VAN, SLIDING DOORS, EXTENDED HEIGHT, AUTOMATIC TRANSMISSION, V-6, MILEAGE 138,094



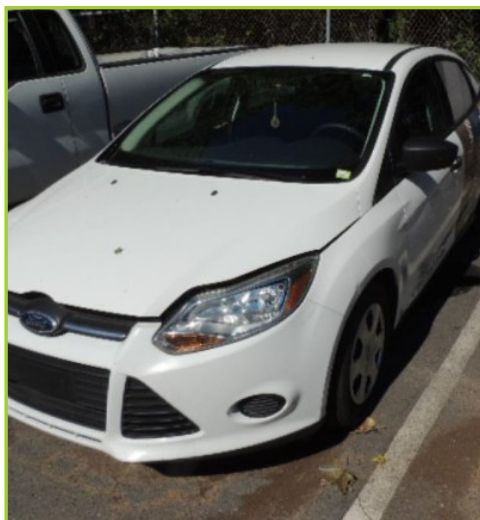
FORD E350 SUPERDUTY 2012 CONVERTED CARGO VAN WITH 5.4-L FLEX FUEL V8 ENGINE, KNAPHEIDE UTILITY BOX BODY, VIN# 1FDSE3FL1CDA41372



FORD F750XL 2008 FLAT BED TRUCK WITH CUMMINS 6.7-L TURBO DIESEL ENGINE, 142,480-MILES



ISUZU NPR ECO-MAX 2011 CABOVER BOX TRUCK, 16' BOX, W/ RAMP, 12000GVW, 4.75 ECO MAX DIESEL TURBO, AUTOMATIC TRANSMISSION, MILEAGE 85,288



FORD FOCUS 2013 4 DOOR SEDAN, MILEAGE 50,897, 2.0 LITER GAS, 185/65R15, 40% RUBBER. VIN# 1FADP3E25DL309370



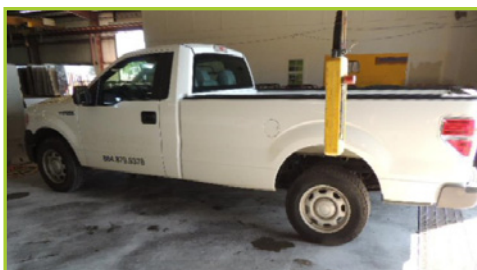
CHEVROLET LS 2008 4 DOOR, AUTOMATIC TRANSMISSION, 4 CYL. ECOTEC ENGINE, MILEAGE UNKNOWN



FORD F-550 2003 SINGLE CAB W/ 8'X16' FLAT BED W/ SIDES, 7.3 TURBO DIESEL, DUAL REAR WHEELS, MILEAGE 239,325, AUTOMATIC



FORD ESCAPE SE 2014 SPORT UTILITY VEHICLE WITH 1.6 L GAS ENGINE, FRONT WHEEL DRIVE, AUTO TRANSMISSION, 10,524-MILES



FORD F-150 2013 SINGLE CAB LONG BED, AUTOMATIC TRANSMISSION, 5.0 V-8, MILEAGE 130,593, 235-75 R17



FORD F-150 2013 EXTENDED CAB, SHORT BED, AUTOMATIC TRANSMISSION, 5.0 V8, MILEAGE 106,174, P230-75-R17

GLOBAL ONLINE AUCTION : SEPT. 19TH, 7AM - SEPT. 22ND, 12PM EDT
PREVIEW: SEPT. 19TH 9AM - 4PM OR BY APPOINTMENT - CONTACT AUCTIONEER FOR FURTHER INFORMATION

HUGE QUANTITY OF STONE & RAW MATERIAL INVENTORY



GRANITE, MARBLE, NON GRANITE, QUARTZ, RECYCLED, SOLID SURFACE, WOOD



ELGI E37-125 50-HP AIR-COOLED SCREW TYPE AIR COMPRESSOR, (2013), WITH (2) APPROX. 1-HP BLOWERS, PROGRAMMABLE LOGIC CONTROL, 4,021-HOURS REPORTED, ALSO WITH STEEL FAB VERTICAL 250 GAL AIR TANK AND AURORA 2.5 HP REFRIGERATED AIR DRYER MODEL RDV0250-04



ECS EICH WATER TREATMENT SYSTEM, INCLUDES (2) POLYURETHANE SEDIMENT TANKS, (2) MODEL TSSC8 SEDIMENT BAGGERS, INGERSOLL RAND 2" PNEUMATIC PUMP, SPARE IR 2" PUMP, (3) GRUNDFOS 10HP PUMPS, ROSEDALE FILTER, (2) 1000GAL POLYURETHANE TANKS, ALL RELATED PUMPS, CONTROLS, PROCESS PIPING AND SUPPORT STRUCTURES.



HALLA HDF 45A 8,800LB CAPACITY, 3 STAGE MAST, 185" LIFTING HEIGHT, SIDE SHIFT, 5' FORKS, DUAL FRONT TIRES, 5,600HRS, VESTIL BOOM LIFT ATTACHMENT MODEL LM 1T-4, 4000LB CAPACITY



HYSTER H155XL2 PROPANE, 14,100LB CAPACITY, APPROXIMATELY 173" LIFTING HEIGHT, DUAL FRONT TIRES, SIDE SHIFT, 8' FORKS, 2551 HOURS, YR. 1999

Contacts:

Ty Lindley - Tel: (858) 847.0653
Email: tlindley@hginc.com

Nick Dove - Tel: (858) 847.0659
Email: ndove@hginc.com



AUCTIONEER'S NOTE

HGP is pleased to be selected to conduct this Global Online Auction Series for:

Seven Stone

ABOUT THE SALE

This sale features 2,000 Lots Expected Including State of the Art Lab Equipment, Tablet Pressing, Granulation, Coating, Packaging and More! Kansas City, MO

Please view our website at www.hgpaucaction.com for the bidding instructions and the full terms of the sale. Thank you for your interest, and we look forward to providing you quality equipment sales and World Class Service.

KEY ASSETS

Kuka CNC 6 Axis Robot • CMS Maxima 5000 5 Axis Router • Flow 71400-1 CNC Flying Bridge • (2) Marmo Maccanica Programmable Bridge Saw • Komo 512VR CNC Router • (8) Isuzu NPR Box Truck • Ford F750XL, 250XL, (5) F150, Focus • Chevy W3500, Express 2500, (4) HHR • Huge Quantity of Stone & Raw Material Inventory and Much More!



Scan this QR Code with your smartphone for More Information.

Contact Information

A BUYER'S PREMIUM WILL APPLY AT THIS SALE

Ty Lindley, (858) 847.0653
njimenez@hginc.com

Nick Dove, (858) 847.0659
ndove@hginc.com

For more information including a photo gallery, equipment list, and more, please visit us online at www.hgpaucaction.com. Please read all Terms and Conditions prior to auction.



FEATURING ASSETS FROM 5 SITES IN NC, SC, TN AND GA

4 Day Major Global Online Auction On Behalf of the Largest Stone Fabricator In The Southeast

GLOBAL ONLINE AUCTION

Starting: September 19, 2016 – 7:00 am EDT
Ending: September 22, 2016 – 12:00 pm EDT

AUCTION LOCATION

1400 West Marietta St., NW, Atlanta, GA

AUCTION PREVIEW

September 19, 2016 (9:00 am - 4:00 pm EDT)
Preview visitors must be Pre-Approved.
Contact Nick Dove to get on approval list.

For more information including a photo gallery, equipment list, and more, please visit us online at www.hgpaucaction.com
Items subject to prior sale. Buyers are advised & encouraged to inspect equipment and read all Terms and Conditions prior to auction.

WOULD YOU LIKE TO SELL AN ASSET?

Simply call 1.650.207.0627 and speak with Kirk Dove, Managing Partner for more information. We will be glad to listen to your specific needs and from that HGP can prepare a detailed solution for your review that will maximize the returns for you're assets for the company and It's Shareholders.

GLOBAL HEADQUARTERS

Hacienda Del Mar
12625 High Bluff Drive
San Diego, CA 92130
Phone: (877) 303.8040
Fax: (866) 388.8595

FIRST CLASS MAIL

POSTMASTER: Dated Material.
Please Deliver Promptly.

Presorted First Class Mail
U.S. Postage
PAID
San Diego, CA
Permit No. 00

Starting: Septmeber 19, 2016 – 7:00 am EDT
Ending: September 22, 2016 – 12:00 pm EST
Location: 1400 West Marietta St., NW, Atlanta, GA

For complete Terms of Sale, visit our website at:

www.hgpaucaction.com

AFFILIATIONS

