

GLOBAL WEBCAST AUCTION

STARTING: March 12, 10:00 am **ENDING:** March 15 10:00 am *EST*



RG STEEL, LLC

OVER 3,000,000-LBS.



(100+) ROLLS ASSORTED SIZES



(5) EBNER HICON / H2 ANNEALING FURNACES



COMPLETE MACHINE SHOP

**AS NEW AS
2009**



(5) KRESS SLAB HAULERS TO 100-TONS

**AS NEW AS
2009**



(30+) FORKLIFTS TO 33,000-LBS.

**4 DAY
AUCTION**

Liquidation of Assets of:

RG STEEL WARREN

*Excluding Any Assets Used in the
Steel Production Process for the Hot Strip Mill*

1040 Pine Avenue SE in Warren, Ohio 44483

**TUESDAY, MARCH 12th -
FRIDAY, MARCH 15th**

Starts at 10AM Each Day

Inspection: Monday, March 11th / each sale day from 9AM to 4PM



Heritage Global Partners

ASSET ADVISORY AND AUCTION SERVICES

A Legacy Since 1937

A Counsel RB Capital Company

www.hgpauktion.com

DAY 1 TUESDAY, MARCH 12TH



10' X 1-1/2" (EST) CAPACITY HYDRAULIC PLATE BENDING ROLLS



ROUND 48" X 1/4", MODEL IP140/4 PLATE BENDING ROLLS



MAZAK V-655/60 CNC VERTICAL MACHINING CENTER



MAZAK VTC-16A CNC VERTICAL MACHINING CENTER



MAZAK POWERMASTER N PMN3000 CNC LATHE



(40+) LINCOLN & MILLER WELDERS



MORRISON KEYSEATER



600-TON WHEEL PRESS



NOTE:

FACILITIES HAVE
NO HEAT OR LIGHTING.
DRESS WARM & BRING
A FLASHLIGHT.

DAY 1 TUESDAY, MARCH 12TH



PACIFIC 1000-TON HYDRAULIC PRESS BRAKE



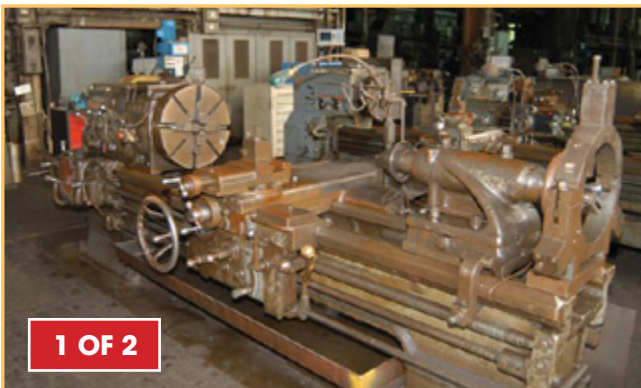
CHICAGO 8' X 1/4' POWER FINGER BRAKE



100'S OF PNEUMATIC HAND AND BANDING TOOL, SOCKETS, AND MORE



HILL ACME 6 IRON WORKER



1 OF 2

PACIFIC 1000-TON HYDRAULIC PRESS BRAKE



CHICAGO 8' X 1/4' POWER FINGER BRAKE

FABRICATING EQUIPMENT

PACIFIC 1,000-TON HYDRAULIC PRESS BRAKE, 18' Overall 14' Between Housing, 16' Throat, Allen Bradley Panelview 600 Control, Precision Machine Controls, Hydraulic System **PLATE BENDING ROLLS**: 10' x 1-1/2" (Est) Capacity Hydraulic, Drop End, 20" Dia. Top Roll, 15" Dia. Lower Rolls • **ROUND O** 48" x 1/4", Model IP140/4 • 36" Mechanical **CHICAGO 8' X 1/4' POWER FINGER BRAKE**, Model PBP-8250-8 • **HILL ACME Iron Worker**, Model 6, S/N 8000250IV, Punch 1-1/8" thru 7/8", Shear 1-1/8" x 6" to 1/2" x 14", 2" Square, 2-3/16" Round, 6" x 6" x 1/2" Angle, Coper/Notcher • **WHITNEY** 70-Ton C-Frame Punch, Model

771- 000, 8" Throat Former Lead PCB Assembly

WELDING RELATED & WELDERS

KN ARONSON BURNING TABLE, Burny 3 Control, Linotrol Tracer w/(2) 4' x 10' Tables & 9' x 25' Burning Table, (3) Oxy/Ace Torches, (1) Thermal Dynamics 400-AMP Plasma (2) **ROTARY WELDING MACHINES**, Lathe Frame, w/ Lincoln Idealarc 1000 Power Supply, Lincoln Weld Control & Flux Hopper: (1) 18" Swing Over Bed, 148" Between Centers, 15" 3-Jaw Chuck & (1) 50" Swing Over Bed, 40" Swing Over Carriage, 228" Between Center (2) **TELEDYNE-MCKAY VERS-O-WELD SYSTEMS** w/PA-6 Weld Control, Wire Feed & Power Supplies

Electric Fired Annealing Furnace

- AIRCO Model 10 Track Burner • KOIKE ARONSON No. 108 Radiograph • (3) E-Z-ARM Fume Collectors • 64" & 14" Rotary Welding Positioners

THERMARL ARC & THERMAL DYNAMICS PLASMA CUTTERS • (11) LINCOLN & MILLER Welding Generators • Over (20) MILLER, LINCOLN & HOBART Welders & Power Supplies • Wire Feeders • Torch Carts & Bottle Carriers • 100's of Boxes of Welding Supplies

CNC MACHINING

1996 MAZAK V-655/60 CNC VMC, S/N 126189, Traveling Head, Travels: 60" X-Axis, 25.59" Y-Axis, 25.59" Z-Axis, 25-1/2" x 68-1/2" T-Slot Table, 50-Taper Spindle, 6,000-RPM Spindle,

30-Position ATC, Jorgensen Chip Conveyor, SMW System 50 4th Axis Control, SMW RT315HN Rotary 4th Axis, Mazatrol M-Plus Control **1997 MAZAK VTC-16A CNC VMC**, S/N 124832, Traveling Head, 16" x 35- 1/2" T-Slot Table, Travels: 22" X-Axis, 16" Y-Axis, 20" Z-Axis, 40-Taper Spindle, 10,000 RPM Spindle, 24- Position ATC, Mazatrol, M-Plus Control 1997 MAZAK Powermaster N CNC Lathe, Model PMN3000, S/N 120715, Kitamura B-18 Chuck, 31.5" Swing Over Bed, 18" Over Cross Slide, 120" Between Centers, 4.62" thru Spindle, 15-1200 RPM, 8-Position & 4-Position Turrets, Tailstock, Steady & Follow Rests, 60-HP, Mazatrol T Plus Control

DAY 1 TUESDAY, MARCH 12TH



(2) GIDDINGS & LEWIS 5" SPINDLE TABLE TYPE HORIZONTAL BORING MILLS



BULLARD 75 TABLE TYPE VERTICAL MILL



MATTISON 24" X 194" HYD. SURFACE GRINDER



(2) LANDIS CYLINDRICAL GRINDERS



DOALL C4100M 16" X 16" HYD. HORIZONTAL BAND SAW



DOALL TF1822M VERTICAL BAND SAW

STRUCTURAL / PLATE / ROUNDS / ANGLE STEEL INVENTORY



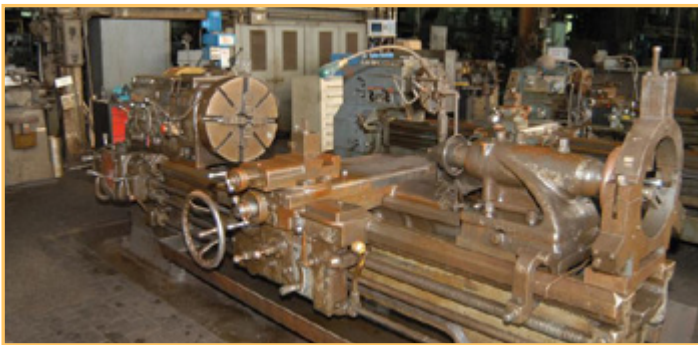
TOOLROOM

(2) GIDDINGS & LEWIS 5" SPINDLE HORIZONTAL BORING MILLS, Model 65- D5-T & 70-D5-F BULLARD TABLE TYPE HORIZONTAL BORING Mill, Model 75, 48" x 84" Table, 60" Vertical CLEVELAND PLANER MILL, 54" x 190" T-Slot Table, (1) Rail Mount & (1) Side Mount Ram, 55" Under Rail CINCINNATI Horizontal Mill, Model 625-20, S/N 4J6PSR-3, 20" x 105" TSlot Table, 14-1400 RPM, Spindle Nose Support, 90° Head, 3-Axis DRO, 50-Taper Spindle (6) VERTICAL MILLS (CINCINNATI, KNUTH, BRIDGEPORT & INGERSOLL) (10) ENGINE LATHES: LEBLOND 52" x 288" • LODGE & SHIPLEY 28" x 240" • LEBLOND REGAL 24" x 144" • LEBLOND REGAL 26" x 128" • MONARCH 27" x 84" • (2) LONGEN 20" x 80" • MONARCH 24.5" x

DAY 1 TUESDAY, MARCH 12TH

2 OF 6

(6) CINCINNATI, KNUTH, BRIDGEPORT & INGERSOLL VERTICAL MILLS

LODGE & SHIPLEY 28" X 240" ENGINE LATHE

LEBLOND REGAL 26" X 128" ENGINE LATHE

KNUTH COMPASS 20" X 72" ENGINE LATHE

CARLTON 8' X 19" RADIAL ARM DRILL

KING VERTICAL TURRET LATHE

(3) DOUBLE GIRDER TOP RUNNING BRIDGE CRANES

72" • KNUTH COMPASS 20" x 72" • SIDNEY 20" x 52" • AMERICAN PACEMAKER 18" x 50" **LATHES:** KING Vertical Turret Lathe, 72" Table, 80" Swing, 54" Under Rail • **SOUTH BEND** 16" x 55" Toolroom Lathe • LUXMATTER 13" x 36" Toolroom / Gap Bed Lathe, Model FMT-15000K **GRINDERS:** MATTISON 24" x 194" Hyd. Surface Grinder • NORTON 8" x 24" Surface Grinder • HANCHETT Rotary Surface Grinder • (2) LANDIS Cylindrical Grinders **BAND SAWS:** DOALL 16" x 16" Hyd. Horizontal, Model C4100M • DOALL Vertical, Model TF1822M • DOALL Vertical, Model 2613-3 • JET 14" x 6" Vertical, Model JWBS-14CS • MARVEL Reciprocating, Type 9A, Model 5A/E7/ E13 **RADIAL ARM DRILLS:** CARLTON 8' x 19" w/MT6 Spindle w/Quick Change •

CARLTON 6' x 17" w/MT6 Spindle • GILBERT 5' x 9" w/MT4 Spindle

MATERIAL HANDLING

(3) DOUBLE GIRDER BRIDGE CRANES, Top Running Bridge & Hoist, Remote: 20/5-Ton x 50' • 15-Ton x 37' • 7.5-Ton x 50' **5-TON SINGLE GIRDER BRIDGE CRANE,** Top Running w/Underhung Hoist, 6-Way Pendant • 10-Ton Traveling AFrame Gantry Crane, Track Mounted, 23' Between Verticals, 12' Under Hook **(10) 2-TON BEAM MOUNT JIBS,** Electric Hoists • 2-Ton Pedestal Jib • PRESTO 4,000-lb. Scissor Lift Table, Model XL-48-40 • WALKER 5,500-lb. Electric Lifting Magnet, Model WBM-25PB • WALKER 880-lb. Permanent

Lifting Magnets • 4,000-lb. Crane Forks • HERCULES 4,000-lb. Forklift Jib, Model CI-1224, 12' Max Reach • Spreader Beams:

INSPECTION

Lots of Assorted Inspection items Including **MICROMETERS, LEVELS & MORE**

MISCELLANEOUS

600-TON WHEEL PRESS • Wheel Press Fixtures • Shop Presses • Shaper • Arbor Press • Concrete Coring Drill • Keyseaters • 60" x 72" Rotary Airlift Table **DRAFTO 50-TON CRANE BLOCK COMMANDER JOHANNSON GEARED HEAD DRILL,** S/N 33192, 34" Swing, 35-1/4" x 15-1/4" Table, 96 - 1140 RPM **PROTO 10-TON GEAR PULLER SET** **PNEUMATIC HAND PLATE BEVELLER,**

Model TKF1500-1, .590/15mm Capacity **MISCELLANEOUS SHOP ITEMS** Including: (75+) Assorted ENERPAC Hydraulic Rams, Hand & Electric Power Supplies **QUENCH TANK,** Melting Crucible, Broach Tooling Sets, Chop Saws, Drill Sharpeners, Bolt Threaders & Dies, Grinders & Sanders, Dividing Heads, Tool Holders, Offset Boring Heads, Tooling, Hand Tools, Consumable Items & Perishable Tooling, Storage Cabinets & Racking, LYON & LISTA Modular Tool Cabinets, Fans, Heaters • Safety Equipment • MILWAUKEE Magnetic Base Drills

RAW MATERIAL

1,000,000 + LBS. RAW MATERIAL to Include: Structural/Plate/Rounds/Flats/Channel/ Angle/Bar Stock

DAY 2 WEDNESDAY, MARCH 13TH



KRESS SC-200T 100-TON SLAB HAULER



(4) KRESS S-60-E 60-TON COIL MOVERS



(4) KRESS SC-160 80-TON SLAB HAULERS



CATERPILLAR 33,000-LB. FORK LIFT



GMC S/A DUMP TRUCK



(23) CATERPILLAR, EAGLE PICHER, SELICK, HYSTER & CLARK FORKLIFTS



(15) CHEVROLET 3500HD FLATBED & 2500HD PICKUP TRUCKS

CONSTRUCTION EQUIPMENT

GALION T600C MOTOR GRADER, S/N GC-02588, Detroit Diesel, 12' Grader, 3,389 Hours (2) **CATERPILLAR 988F ARTICULATED WHEEL LOADERS**, 150" Bucket, Enclosed Cab, S/N 2ZR00689 & 2ZR01005 CATERPILLAR 980G Articulated Wheel Loader, S/N 2KR00367 (2) **CATERPILLAR 966F ARTICULATED WHEEL LOADERS**, 10' Bucket, Enclosed, Heat, AC, CAT 3306B Engine, S/N 1SLC2889 & N/A, **GROVE 22-TON ROUGH TERRAIN CRANE**, Model RT58E, Cummins Diesel, Automatic, 3-Stage Boom, PAT DS350GW Load Control **GROVE 28-TON ROUGH TERRAIN CRANE**, Model RT500C (2) **CAT 769C HAUL TRUCKS**, 7-Speed Automatic, CAT 3408

Diesel, VIN 01X06900 & VIN 01X06924 CAT 769 Spare Dump Body (3) **CATERPILLAR BACKHOES:** (1) 430D • (1) 446B • (1) 436D, AS NEW AS 2002 20" x 20" **STONE PLATE COMPACTOR**, Gas • (3) 148" Loader Buckets

FORKLIFTS

CATERPILLAR 33,000-LB., Diesel, Pneumatic Tires, Enclosed, NEW 2010 **CATERPILLAR 15,000-LB.**, Model DP70, Diesel, Pneumatic Tires, Dual Front, 14' (Est.) Lift **EAGLE PICHER 12,500-LB.**, Diesel, 126" Lift, Solid Tires **SELICK 10,000-LB.**, Model S100 JDS-4, 4WD, 10' Lift, Pneumatic Tires **SELICK 8,000-LB.**, Model S80-2WD, 120" Lift, Pneumatic Tires **CATERPILLAR 8,000-LB.** Forklift, S/N 3CM10927, 10' Lift, Diesel, Cushion Tires, ROPS (8) **CATERPILLAR**

DAY 2 WEDNESDAY, MARCH 13TH

1 OF 5



(5) CATERPILLAR ARTICULATED WHEEL LOADERS



(2) CATERPILLAR 769C HAUL TRUCKS

1 OF 3



(3) CATERPILLAR BACKHOES



GROVE RT58E 22-TON ROUGH TERRAIN CRANE

1 OF 17



(17) POLLACK HOT TRANSFER TORPEDO RAIL CARS W/ROTATORS

1 OF 2



(2) KUBOTA RTV 900 ATVS

6,000-LB., Diesel, Pneumatic Tires, M/N DP30 & P6000 (8) **HYSTER 6,000-LB.**, Model H60FT, 3-Stage Mast, Pneumatic Tires, Gas, S/S, Fork Positioner, NEW 2009 (2) **CATERPILLAR 5,000-LB., MODEL DP25**, 190" Lift, Cushion Tires **CATERPILLAR 4,000-LB.**, Model DP20, Diesel, Cushion Tires **CLARK 3,000-LB.** Electric Forklift, 3- Stage Mast, 3-Wheel, ROPS

COIL RELATED

(4) **KRESS COIL MOVERS**, Model S-60-E, 60 Ton, 3406 Diesel, Articulated, A/C, Heat S/N 8CJ01375, 8CJ01395 S/N 8CJ01345, 8CJ01348 **KRESS 40-TON ARTICULATED COIL LIFT**, Diesel, CL80 Boom Attachment, S/N RRRWJ, 5,188 Hours

SLAB HAULERS

KRESS 100-TON SLAB HAULER, Model SC-200T, S/N WWM-T060, CAT Acert C15, 365-HP Diesel, Auto, Air, AM/FM, PSION 8525G2 Load Control, ID540 - NEW 2009, 184.5 Hours (4) **KRESS 80-TON SLAB HAULERS**, Model SC-160, CAT Diesel, Automatic, AM/FM, Teklogix Load (2) **NEW KRESS HOIST ACTUATORS** • (7) Rebuilt KRESS Hydraulic Actuators • Remanufactured KRESS Diesel (for KRESS SC160)

TORPEDO CARS

(17) **POLLACK HOT TRANSFER TORPEDO RAIL CARS** w/Rotators

TRUCKS & VANS

1981 **MACK RD686 DAY CAB T/A TRUCK TRACTOR**, Diesel, 8-Speed, 202" Wheel Base, Fixed 5th Wheel Plate, VIN

RD686SX8423 **1995 GMC DUMP HOPPER TRUCK**, Topkick Diesel, Auto, Air, Lifter Hauler, VIN 1GDM7H1J918782, 85,669 Miles **1995 GMC S/A DUMP TRUCK**, Automatic, Diesel, 10' / 8.3-Yard Dump Body, Top Kick, Diesel, 82,665 Miles (3) **GRANT GT MAINTENANCE TRUCKS**, Enclosed (8) **FLATBED TRUCKS**: 2008 CHEVROLET 3500HD 8' Crew Cab, Auto • **1999 CHEVROLET 3500 FLATBED TRUCK**, Auto • 1999 CHEVROLET 2500 8', Auto, 44,776 Miles • (2) **1998 CHEVROLET C8500 T/A 19'**, Auto, Diesel, 22,046 Miles, 11,187 Miles • **1997 GMC 8' CREW CAB**, 1996 GMC 3500 8' Crew Cab, Auto, CHEVROLET 11', Gas, Auto (7) **PICKUP TRUCKS**: 2008 **CHEVROLET 2500HD**, Vortec Engine, Auto, (5) GMC 2500, Auto, Air, as new

as 2008 • **1999 GMC 3500**, Crew Cab, Auto, Air, 55,830 Miles (4) **CARGO VANS**: 2001 GMC 2500, • 1999 GMC 2500, 34,615 Miles • 1999 CHEVROLET, • 1995 CHEVROLET Several Salvage/ Parts Trucks & Vans

COMPLETE CARPENTRY SHOP

(2) **CRESCENT PLANERS**, 24" / 8" • 23.5" / 6" Max. Thickness, (3) Assorted Jointers to 12", **WALLACE** Type K Mortiser, **ROCKWELL** Single Spindle Shaper, 27" x 17" Work Area, Custom Built 48" Panel Saw, (2) Wood Turning Lathes: 24" x 80" • 7" x 32", **PORTER CABLE** Hand Router, **FREUD** Biscuit Cutter, Remaining Wood Inventory: Plywood, 2"x4" thru 2"x12", Lumber

DAY 2 WEDNESDAY, MARCH 13TH



KRESS SC-200T 100-TON SLAB HAULER



(4) KRESS S-60-E 60-TON COIL MOVERS



(4) KRESS SC-160 80-TON SLAB HAULERS



CATERPILLAR 33,000-LB. FORK LIFT



GMC S/A DUMP TRUCK



(23) CATERPILLAR, EAGLE PICHE



(23) CATERPILLAR, EAGLE PICHE



(15) CHEVROLET 3500HD FLATBED & 2500HD PICKUP TRUCKS

TRAILERS

1986 GREAT DANE STEP-DECK TRAILER, Model GPD-445, 125,000 GVWR, Quad Axle, 128" Shaft, 36' Bed, VIN 1GRDM9049KM024702 **HEAVY DUTY TRI-AXLE RGN TRAILER**, 102" x 22' Well, 13' Rear Shelf **45'T/A HEAVY DUTY DOUBLE DROP TRAILER** • 35' & 29'T/A Heavy Duty Coil Trailers • 15'T/A Proline Cargo Trailer w/Ramp

BRIDGE CRANES, LIFTING & MATERIAL HANDLING

JLG 60' BOOM LIFT, Model 60-F, Pneumatic Tires, Gas, 3,462 Hours 22,000-lb. Vertical Lift, Model LMT22, S/N 35729 (6) **BRIDGE CRANES-SINGLE GIRDER**, Underhung Bridge & Hoist, 6-Way

Pendant: EXCEL 2-Ton x 42' • EXCEL 2-Ton x 38' • ACCO 2-Ton x 20' • (2) EXCEL 2-Ton x 20' • LOUDEN 2-Ton x 18' (1) **22' BRIDGE CRANE, SINGLE GIRDER**, Top Running, Underhung Hoist, 4-Way Pendant **65" CRANE TYPE ELECTRO MAGNET** • OTC 6,000-lb. Shop Hoist, Electric / Hydraulic • DAYTON 1/2-Ton Electric Hoist

MAINTENANCE / ATV VEHICLES

(2) KUBOTA RTV 900 ATV, Diesel, 4X4 JOHN DEERE TE GATOR, Electric w/Charge

TRACTORS

(5) FORD FARM TRACTORS

DAY 2 WEDNESDAY, MARCH 13TH**COMPLETE ROLLING STOCK REPAIR SHOP**

CATERPILLAR DP70 15,000-LB. FORKLIFT

COMPLETE CARPENTRY SHOP

CRESCENT 24" PLANER



CRESCENT 23-1/2" PLANER



SELICK S80-2WD 8,000-LB. FORKLIFT

**1 OF 3**

(3) CRESCENT & MARVEL VERTICAL BAND SAWS



PLYWOOD & LUMBER INVENTORY

1 OF 6

(6) SINGLE GIRDER BRIDGE CRANES

CEMENT RELATED

STONE CEMENT MIXER, Model 655-PM, Gas 40-Sections WACO 60" & 37" Scaffolding w/Pins & Levelers 10-Sections Scaffold Dec STONE 40" Power Trowel, Model CF464 MILLER STURDi SAW Concrete Saw 1-Yard Crane Lift Concrete Bucket • (12) Pneumatic Air Hammers

COMPLETE HEAVY EQUIPMENT AND ROLLING STOCK REPAIR

1,000+ NEW CATERPILLAR REPAIR AND MAINTENANCE PARTS Including: Oil/Fuel/Air Filters, Seals, Bulbs, Lamps, Bearings, Misc. Repair Parts, Hydraulic

Cylinders, Tires, Wheel, CAT Engine, CAT Transmission. Mechanics Tools, Jacks, Diagnostic Equipment, Hand Tools, Power Tools, Pneumatic Tools, Creepers, Hydraulic Vehicle Lifts, Tool Boxes

COMPLETE PIPE FABRICATION SHOP TO INCLUDE:

TORCHMATE CNC PLASMA TABLE, 6' x 10' Table, Thermal Dynamics Cut-master 151, 25-AMP Power Supply, SM 05076758, Single Plasma Head, Torchmate CNC Controls, ESAB Sidewinder 55 Plasma Cutter • LINCOLN Procut 80 Plasma Cutter • (5) LINCOLN & MILLER Welding Generators • (25) LINCOLN, MILLER & HOBART Welders & Power Supplies • (3) LINCOLN Fume

Hoods • (2) TORIT Dust & Fume Collectors • PHOENIX Dry Rod Oven • (3) Oxy-Ace Torch Reel Sets • Welding Curtains • Oxy-Ace Bottle Carts • (200+) Boxes Welding Stick & Wire Material, Large Assortment of Stainless/Copper/Galvanized/Brass/Iron—Pipe, Fittings, Elbows, Flanges, Fire Hydrants

TOOLROOM

KALAMAZOO 8C-D & DOALL C41A HORIZONTAL BAND SAWS (3) CRESCENT 36" x 16" • 35" x 13" • MARVEL 18" x 22" Vertical Band Saws (4) DEWALT & DELTA Radial Arm Saws to 20" Rip (3) Assorted Tables Saws w/24", 14" & 10" Blade Swing Saw, 14" Rip, Runoff Conveyor (4) Drill Presses to 20.5" Swing (JET, DELTA, COBURN, BUFFALO)

MISCELLANEOUS

NIAGARA 36" ELECTRIC SHEAR, Model 136 TAPCO Pro 3 Porto-Bender, S/N YMMI, 101" Max. Length, 15" Bend Width ENERPAC 40-TON (EST.) SHOP PRESS, 34" Between, Electric/Hydraulic

LIFTAINER HAULER • (4) REZNOR Waste Oil Heat Systems w/Tank • (2) 10,000-Gallon Oil Tanks • CLEMCO Sand Blast Pot • SCHAEFER Pro Kool Air Circulator • Air Compressors • (13) Dump Hoppers GREENLEE 785 PIPE BENDER • RIDGID & LANDIS Pipe Threaders • (75+) RIDGID Pipe & Roller Stands • Large Quantity of Pipe Supplies & Inventory RIDGID CT400 PRO PRESS GUN ROLLS STEEL CABLE • Copper Fittings & Pipe • MILWAUKEE Core Drills • Chop Saws • Hand Tools • Double End Grinders • Sanders • Steel Layout Tables • Storage Cabinets & Racking • Heaters • Ladders • Floor Sweepers • Trash Pumps • Steam Cleaner • Parts & Pressure Washers • Snow Blowers

DAY 3 THURSDAY, MARCH 14TH



MCKAY HOT STRIP PICKLE LINE W/COIL CAR PAYOFF STAND



100'S OF STEEL ROLLS & PARTS



1000+ ELECTRIC MOTORS



MG SETS UP TO 9300-HP



MOTOR CONTROL CENTER

DAY 3 THURSDAY, MARCH 14TH



(5) EBNER HICON / H2 ANNEALING FURNACES



MCKAY / WEEN 52" SLITTING LINE W/COIL OPENER



MCKAY / WEEN LIGHT GAUGE SLITTING LINE W/PROCESSING UNCOILER



CONTINENTAL TANDEM MILL W/CRADLE ROLL UNCOILER



CONTINENTAL TANDEM MILL W/CRADLE ROLL UNCOILER

PICKLE LINES

MCKAY HOT STRIP PICKLE LINE W/COIL CAR PAYOFF STAND, Squaring Shear, Strip Welder, McKAY 275-HP Processor, (3) Acid Tanks, (1) Water Rinse, 175-HP Exit Tank Pinch Rolls, 175-HP & 125-HP Exit Looper Rolls, 260-HP & 150-HP Tension Bridles, 200-HP Tension Reel, Coil Car, Automatic Bander, Controls **MCKAY / WEEN HYDROCHLORIC ACID PICKLE LINE**, Entry Conveyor, Payoff Stand, 200/400-HP McKAY Processor, 50-HP Upcut Shear, Flash Butt Welder, Hi-Temper Mill, (4) 84' Acid Tanks, (1) Rinse Tank, (2) Steam Dryers, Scrap Choppers, 350-HP Tension Reel, Automatic Bander, Controls **VERY LARGE REPAIR PARTS INVENTORY FOR SLITTING & PICKING LINES**

SLITTING LINES

MCKAY / WEEN 52" SLITTING LINE W/COIL OPENER, Processing Uncoiler w/30" Expanding Mandrel w/(2) 200-HP Motors, 50-HP Crop Shear, 200-HP Slitter w/9" Dia. Arbor & Slitter Head, 25-HP Scrap Chopper, 5-Roller Tension Leveler, 350-HP Take-up Reel, Controls **MCKAY / WEEN LIGHT GAUGE SLITTING LINE W/PROCESSING UNCOILER**, McKAY 100-HP 5-Roll Leveler, 100-HP Scrap Chopper, 250-HP Take-up Roll, Banding, Controls

ROLLING MILLS

CONTINENTAL TANDEM MILL W/CRADLE ROLL UNCOILER, CONTINENTAL 4-Stand Cold Reduction Rolling Mill, (arranged as 2500-HP, 3500-HP, 2500-HP, 2500-

HP), Recoiler, Shape Meter, Gauge & Thickness Controls @ Stands 1 & 4, Controls **BLAW KNOX DESIGN SINGLE STAND TEMPER MILL**, 2500-HP Motor, Recoiler, Strip X-Ray Console Controls **HORSBURGH & SCOTT**, and **FALK REDUCTION GEAR SYSTEMS ACTUATORS**, Pinch Rolls, Pumps, Trim Presses

ANNEALING FURNACES

(5) **EBNER HICON / H2 ANNEALING FURNACES**, 72" OD x 189" Stack Height, (5) Cooling Bells, Controls, (10) Annealing Bases

MOTORS & RELATED

(1,000+) **ELECTRIC MOTORS**, Tagged, 1/2- HP to 250-HP (25) **ELECTRIC MOTOR CORES (25+) REBUILT ROTORS**

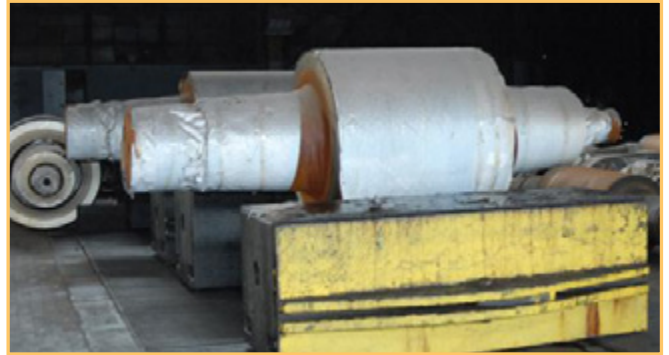
ASSORTED TRANSFORMERS 1998 TAMINI 3-Phase Furnace Transformer, S/N 65201, Off Circuit Tap Charger, Variable Flux Regulation, Cooling System (New-still in original shipping crate)

COMPLETE MOTOR ROOM W/ALL CONTROL PANELS

General Electric 2800 KW Generator, Type MCF, 360 RPM (2) 750 HP Tension Reel Drive Motors GE 9300-HP Motor Generator, Type TS, 514-RPM w/(3) 2000 KW Generators, Type MCF, (1) 600 KW Generator GE 5100-HP Motor Generator, 360 RPM, 4900 KVA (2) GE 3500-HP Motor Generators, 135/305 RPM (3) GE 2500-HP Motor Generators: 175/375 RPM • 135/305 RPM • 90/275 RPM (7) GE & ABB Air Circuit Breakers to 250-KVA

DAY 3 THURSDAY, MARCH 14TH

OVER 3,000,000 - LBS. OF ROLLS



(100+) ROLLS ASSORTED SIZES



(20) RAW STEEL COILS, APPROX. 25,000-LB. TO 35,000-LB.



COIL WEIGHTS



MILL ROLL HOLDERS



(2) GREENLEE 855 SMART BENDERS



CINCINNATI ROLL GRINDER

BRIDGE CRANES

40/25-TON X 113'-2" BRIDGE CRANE, Triple Girder, Top Running Bridge & Hoists, Operator's Cab (10) **DOUBLE GIRDER, TOP RUNNING BRIDGE & HOIST W/OPERATOR'S CAB:** (2) 60/25-Ton x 100' • 60/25-Ton x 98' • 40/25-Ton x 113'-2" • 30/10-Ton x 60' • 25/15-Ton x 100' • 25/5-Ton x 60' • (3) 25-Ton x 100' (18) **DOUBLE GIRDER, TOP RUNNING, BRIDGE & HOIST:** 50/10-Ton x 60' • 30-Ton x 97' • 25-Ton x 97' • 25-Ton x 86'-6" • 25-Ton x 60' • 15/10-Ton x 97' • 15/5-Ton x 100' • 15-Ton x 100' • 15-Ton x 97' • 15-Ton x 70' • 15-Ton x 64'-6" • 15-Ton x 39'-6" • 10-Ton x 97' • 10-Ton x 75' • (2) 10-Ton x 70' • 10-Ton x 60' • 10-Ton x 50' 40/25-Ton x 113'-2" Bridge Crane, Triple Girder, Top Running Bridge &

Hoists, Operator's Cab

LIFTING / COIL HANDLING

(7) **ELWELL PARKER & AUTO LIFT 50,000-LB. COIL MOVERS**, Electric (4) **AUTO LIFT 40,000-lb. Electric Coil Movers** **HEPPENSTALL 40,000-lb. Hunter Lift** (5) **HEPPENSTALL 40,000-LB. Coil Lifts** (2) **MAZZELLA 25-TON Coil Lifts** 40,250-lb. Spreader Beam, 12' Span (1) **SQUARE D 84" Electro Magnet** (2) **OHIO 65" Lifting Magnets** **CUTTLE HAMMER Electro Magnets:** (2) HSM-10, Size 45, (1) HSM-9, Size 45 **LIFTING CHAINS OVER 3,000,000 LBS. STEEL** (100+) **STEEL ROLLS, ASSORTED SIZES, MATCHED**

CRANE PARTS

LARGE QUANTITY OF SPARE CRANE PARTS Including: (25+) Crane Blocks including 75-ton, 60-ton, 35-ton, 10-ton, (75+) Rolls Wire Cable, 1/2" thru 1 1/4", Crane Wheels, Cable Rollers, Hoist Blocks, Sheaves, End Trucks, Bearing, Bottom Blocks, Couplings, Trolleys, Pendants, Oil Seals, Brake Discs, Load Brakes **MISCELLANEOUS** (20) **RAW STEEL COILS**, Approx. 25,000- lb. to 35,000-lb. each (2) **GREENLEE 855 Smart Benders**, Electric, 1/2" to 2" Capacity **WELLS 10" x 16" Horizontal Band Saw**, Model 1016, S/N 4888, and Manual **RODGERS 60-Ton Shop Press**, 45" Between Housings **CINCINNATI Roll Grinder**, 54"/24" Swing, 14" between Centers, Power Carriage Roll

Shot Blast System Roll Storage Racks **RIGID 535 Pipe Threader** **CLUB CART & COLUMBIA Electric Golf Carts** (2) **BATTERY MATE Battery Chargers**, Model 1400H3-18G, 36 Volt, 1400-AMP 14" x 3" Double End Grinder R&D Recirculating Parts Cleaner (32) **MINTEG 4,000-lb. Bags Euroshot (100+) ELECTRICAL SUPPLY CABINETS W/FUSES**, CB's, Coils, Switches, Wiring, Controllers • Fans & Air Circulators • Assorted Blowers • Lots of Hand Tools

NOTE:

FACILITIES HAVE NO HEAT OR LIGHTING. DRESSWARM & BRING A FLASHLIGHT.

DAY 3 THURSDAY, MARCH 14TH



40/25-TON X 113'-2" TRIPLE GIRDER TOP RUNNING BRIDGE CRANE W/ OPERATOR'S CAB



1 OF 18

(18) DOUBLE GIRDER TOP RUNNING BRIDGE CRANES, W/OPERATOR'S CAB

CRANE PARTS



MILL ROLL HOLDERS



1 OF 7

(4) KRESS SC-160 80-TON SLAB HAULERS



CATERPILLAR 33,000-LB. FORK LIFT



(7) ELWELL PARKER & AUTO LIFT 50,000-LB. COIL MOVERS



SQUARE D 84" ELECTRO MAGNET

DAY 4 FRIDAY, MARCH 15TH



WEEN GALVANIZING LINE W/PAYOFF REELS



91" X 18" RAIL MOUNTED TRANSFER CAR



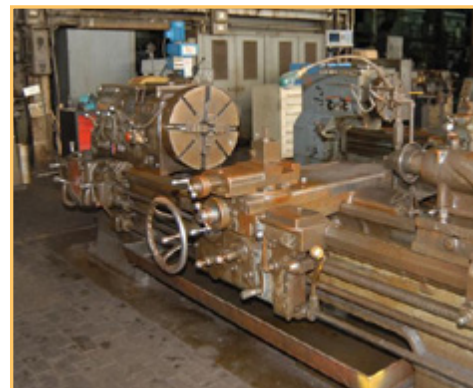
COMPLETE SCALE REPAIR SHOP – LEAD STANDARDS



THERMAL DYNAMICS PAKMASTER 50



WILTON 5816 15" DRILL PRESS



LODGE & SHIPLEY 6' POWER SQUARING SHEAR

SLITTING LINE

STAMCO SLITTING LINE W/2-COIL CAPACITY STORAGE RAMP, Hydraulic Coil Car, Payoff Reel w/Expanding Mandrel, 20-24" & 30" Stripper Unit, 5-Roll Flattener, Hydraulic Sheer, 2-Roll BURR MASHER 6-1/2" Diameter Slitter, 150- HP, Rewind Unit, Banding & Controls

GALVANIZING LINE

WEEN GALVANIZING LINE W/PAYOFF REELS, (2) McKAY 5-Roll Levelers, TAYLOR WINFIELD Lap Shear Welder, BEHLEN Strip Stitching VOSS 19-Roll Leveler Scrap Chopper, Acid & Flux Tanks, Gas Fired Furnace 48" x .171" Hydraulic Shear, Tension Reels, Coil Cars Controls

FORMING LINE

STAMCO ROLL FORMING LINE w/

Hydraulic Coil Car, Unwinder w/Hydraulic Peeler, 25-HP 7-Roll Flattener, Crop Shear, 20-Stand Roll Former, 20-HP Flying Shear, Pack Elevator, Controls—Currently Set-up with Corrugating Tooling

ANNEALING LINE

COMPLETE SILICON ANNEALING LINE

COIL RELATED

AUTO LIFT 50,000-LB. ELECTRIC COIL HANDLERS, ID# 378-93 HUNTER 60,000-lb. 34, 500-lb. Coil Lift (2) **AUTO LIFT 6,000-lb. Diesel Coil Movers**, ID# 513, 528 91" x 18" Rail Mounted Transfer Car

BRIDGE CRANES

(2) 25/5-Ton x 60' Double Girder Bridges, Top Running Bridges & Hoist 25-Ton x 60' Double Girder Bridge Crane,

Top Running Bridge & Hoist (2) 25-Ton x 40' Twin Girder Bridge Cranes 25-Ton x 40' Twin Girder Bridge Crane, Top Running Bridge & Hoist, Operators Cab (2) 25-Ton Double Girder Bridge Cranes, Top Running Bridge & Hoist

WELDERS/PLASMA

THERMAL DYNAMICS PAK MASTER 50, **PLASMA CUTTER THERMAL DYNAMICS Pak Master 50 x 2 Plus Plasma Cutter LINCOLN** Ranger 8 Welding Generator, S/N V1990320156, 225-AMP Weld, 8000 Watt Generator, Gas LINCOLN Ideal Arc R3M-650 Stick Welder, S/N AC252755 (4) **LINCOLN** Ideal Arc R3R-500 Stick Welders, S/N's U1010909248, U1010909291, U1000703600, U1040613919 **MILLER THUNDERBOLT** 225-AMP Stick Welder (2) **PHOENIX Dry**

Rod Ovens • OXY/ACE Bottle Carts

SHEARS

LODGE & SHIPLEY 6' Power Squaring Shear **WYSON 48"** Electric Power Squaring Shear **NIAGARA 34, 48"** Electric Power Squaring Shear **COMECO Prime Line 48"** Electric Power Squaring Shear

GRINDERS

DELTA TOOLMASTER SURFACE GRINDER 40" x 12" OD Grinder **NORTON 22"** x 6" OD Grinder **CINCINNATI** Roll Grinder Power Head

SAWS

WELLS HORIZONTAL BAND SAW, Model L10, S/N 923 9" x 16" Horizontal Band Saw, Model RF80THB916A, S/N 05117095 8" x 15" Horizontal Band Saw, **DOALL Metal Master Vertical Band Saw**,

DAY 4 FRIDAY, MARCH 15TH


STAMCO ROLL FORMING LINE W/HYDRAULIC COIL CAR



COMPLETE SILICON ANNEALING LINE



(75+) ROLLS OF WIRE CABLE



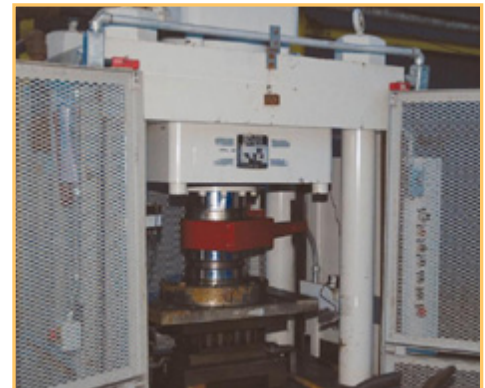
(15) OHIO LIFTING MAGNETS



(6) ROCKWELL HARDNESS TESTERS QUICK CHANGE



PETTIBONE ELECTRIC TUGGER



DENNISON 200-TON H-FRAME PRESS

Model 8, 33" x 25" Table, Single Vise
34" Wood Cutting Vertical Band Saw
PEERLESS Reciprocating Saw

DRILLS

(3) **DOUBLE GIRDER BRIDGE CRANES**,
Top (2) **JOHANSSON** 24" Geared Head
Drills, 37" x 17" Table **WILTON** 15" Drill
Press, Model 5816, S/N 31178, 400-
5000 RPM, 14-1/2" x 12- 1/2" Table

SCALES

Lots of Assorted Inspection items
FAIRBANKS MORSE 30,000-lb. Platform
Scale, 60" x 96" Platform (2) B-TEK Scale
Platforms Large **LEED** Scale Weights
DRAFTO Digital Weight Indicators As-
sorted Scale Parts

INSPECTION/TESTING

(6) **ROCKWELL** Hardness Testers, Series

500, Series B2000 PORTA-SPEC, X-Ray
Spectrograph, Model 2501 **TEMPEL**
GAMMA Tester

MISCELLANEOUS

HUNTER 60,000-LB. LIFT PETTIBONE
ELECTRIC TUGGER (15) OHIO LIFTING
MAGNETS, Round, Square, Rectangular
BLUE M Electric Oven **TRINCO** Dryblast
Cabinet & Dust Collector, Model 48 x 24
SL/BP, S/N 64604-7 **INGERSOLL RAND**
T-30 Air Compressor **RIGDID** 353 Pipe
Threader **DENNISON** 200-Ton H-Frame
Press, S/S 19700, 30" x 16" Between
Posts • (3) Assorted Shop Press Frames
EVERETT Sever-It 14-16, Abrasive Chop
Saw, Miter Base (3) **SAFETY KLEEN** Parts
Washers • 24" x 40" **ABRASIVE** Parts
Cleaner Cabinet, Side Door (17) **EZ-GO**
& **CLUB** Car Golf Carts • (7) **CLUB CAR**

& **EZ-GO GOLF CARTS** (Parts/Repair) •
(12) Forklift & Golf Cart Electric Motors
• (30) New Forklift Wheels 3" Gas Pow-
ered Trash Pump • 20" x 3" Double End
Grinder • **WILTON** 6" Vertical Belt Sander
(2) **POWER TEAM** Enforcer 100 Shop
Clamps **ALLEN BRADLEY** Switch Boxes
VICKERS 10-HP Hydraulic Pumps & Tank
FLAMMABLES Storage Cabinets

**COMPLETE FOR
LIFT REPAIR SHOP**

Battery Chargers: (6) **BATTERY**
MATE, Model 1400M3-18G, 36 Volt,
1400-AMP • (32) **HOBART**, Model
1400C3-18R, 36V, 1400-AMP • (4)
HERTNER, Model TE-1801200, 36 Volt,
1200-AMP, Spare Parts, Tires, Hydraulic
Cylinders, Fittings, Forks, Special
Tooling, Lubrication, Motors

**COMPLETE SCALE
CALIBRATION AND
REPAIR SHOP**

Digital Calibration Equipment, Over
50,000# of Lead Standards, Digital
Scales, Floor/Crane Scales, **DRAFTO**
Digital Weight Indicators, **FAIRBANKS**
MORSE Scales and Balances, Special
Tools 1/2 -Yard Dump Hopper • Lifting
Chains • Air Circulators • Kerosene
Heaters • Electric Heat Wagon • Electric
Radiant Heaters • 100's of Rolls 1"
Banding Material • Banding Tooling &
Pneumatic Banders • **100'S OF LOTS OF
HAND TOOLS** • Pipe & Bench Vises •
Machine Repair Parts • Pumps • Filters
• Control Valves • Blowers • Consum-
ables • Hardware Shim Stock •
Wire • Lighting • Safety Equipment

Liquidation of Assets of:

RG STEEL WARREN

Excluding Any Assets Used in the
Steel Production Process for the Hot Strip Mill

1040 Pine Avenue SE in Warren, Ohio 44483

**TUESDAY, MARCH 12th -
FRIDAY, MARCH 15th**

Starts at 10AM Each Day

Inspection: Monday, March 11th / each sale day from 9AM to 4PM

(5) EBNER HICON / H2 ANNEALING FURNACES



MAZAK VTC-16A CNC VMC



Global Headquarters:

12625 High Bluff Drive
San Diego, CA 92130

For further information, please contact:

Ph: +1 (877) 303.8040

Fx: +1 (866) 388.8595

or visit www.hgpauction.com

Forwarding Service Requested

BUYER'S PREMIUM: 15% cash buyers;
18% for credit card purchasers

(Refer to Term 7 in the Auction Terms and Conditions for details)

PRESORTED
FIRST CLASS MAIL
U.S. POSTAGE
PAID
CINCINNATI, OH
PERMIT NO. 5714

FIRST CLASS MAIL



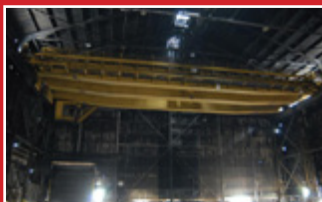
(1,000+) ELECTRIC MOTORS



100'S OF LOTS OF HAND TOOLS



(75+) ROLLS OF WIRE CABLE



(18) DOUBLE GIRDER BRIDGE CRANES

UNABLE TO ATTEND?

Bid Online in Real Time at: BidSpotter.com

1. Register at www.BidSpotter.com.
2. Mail a deposit check in the amount of 25% of your anticipated purchases to: Myron Bowling Auctioneers
P O Box 369 • Ross, Ohio 45061. For overnight delivery Service: 3901
Krause Ln • Hamilton, OH 45014

If You Need Assistance Call 513-738-3311.

ALL ONLINE BIDS ARE SUBJECT TO A 18% BUYER'S PREMIUM

DIRECTIONS:

From I-80, take Exit #209 for OH-5 North. Go 3.7 miles to W. Market Street. Go 3.2 miles on W. Market St. and then continue onto South St. SW. Go .5 miles and turn right onto Pine Ave.

LODGING:

COMFORT INN

136 N Park Ave. 44481

HOLIDAY INN EXPRESS

135 Highland Terrace Blvd. 44484

DAYS INN

1300 Youngstown, Warren Rd. 44446

TERMS & CONDITIONS

Buyers are responsible for all shipping and rigging charges. • All items are sold **AS IS, WHERE IS AND WITH ALL FAULTS**. • Heritage Global Partners shall charge and collect from each successful bidder a 15% on site cash buyers; 18% on site buyers using credit cards. Purchasers who pay in the form of certified funds or wire transfer shall receive a discount from the buyer's premium equal to 3% of the purchase price. • Each successful bidder must pay a 25% deposit toward the purchase price immediately following the successful bid. • Applicable taxes will be added to the purchase price of all taxable items. • Acceptable means of payment include certified funds, wire transfers, *Visa*®, *American Express*® and *Mastercard*®. • The complete terms and conditions that govern this auction will be distributed at the auction site and/or are available on our website at www.hgpauction.com. The complete terms and conditions may include terms unique to this particular auction. Please read them carefully before you bid in the auction. If you participate in the auction, you will be deemed to have read and consented to all of the Terms & Conditions.

©2013 HERITAGE GLOBAL PARTNERS, A COUNCIL RB CAPITAL COMPANY, ALL RIGHTS RESERVED
Complete Terms & Conditions are contained in the Sale Catalog and on the website at www.hgpauction.com. Please review the Terms and Conditions prior to placing bids on any items. Global Headquarters: San Diego, California

SALE CONDUCTED BY:

