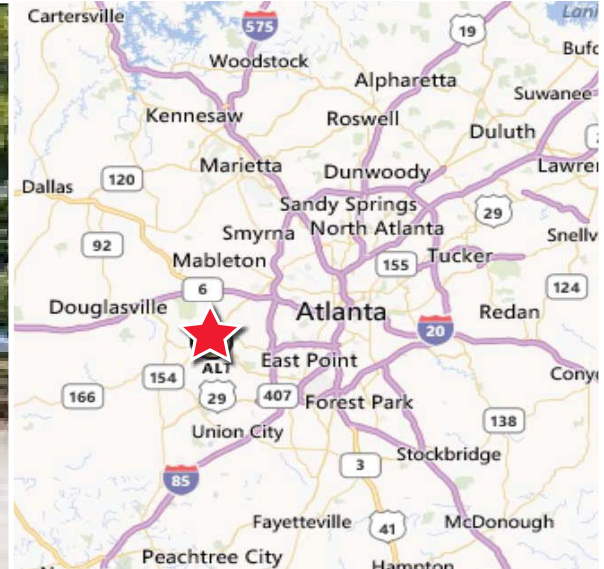


75,379 SF FOR SALE > INDUSTRIAL SPACE > FULTON COUNTY

6215 PURDUE DRIVE SW ATLANTA, GA 30336



**AUCTION TO TAKE PLACE AUGUST, 27
-28, 2014**



An Unprecedented Offering on Behalf of Darby Printing:

A Complete Enterprise Sale of a State-of-the-Art Printing Facility in Atlanta, GA. This is a rare opportunity for a buyer to purchase a turn-key printing operation, including Real Estate, Business (AR, Inv., IP, Customers), and M&E. Assets will be offered in a series of Aggregate and Piecemeal Lots. For more information about the auction, please contact Craig Thompson at 858-210-8785.

RICK VAUGHN
404 877 9276 DIRECT
rick.vaughn@colliers.com



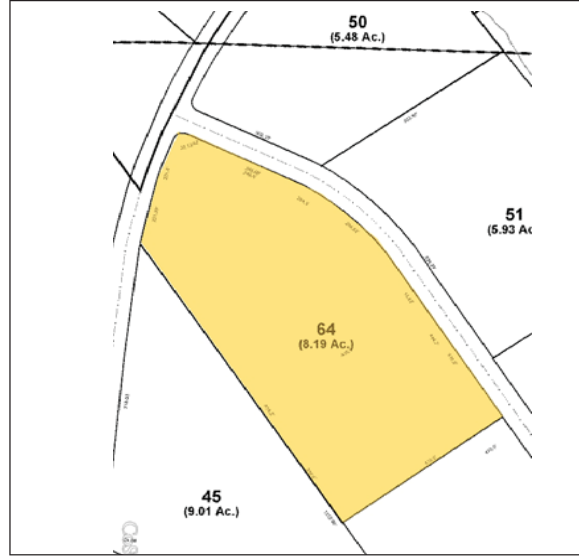
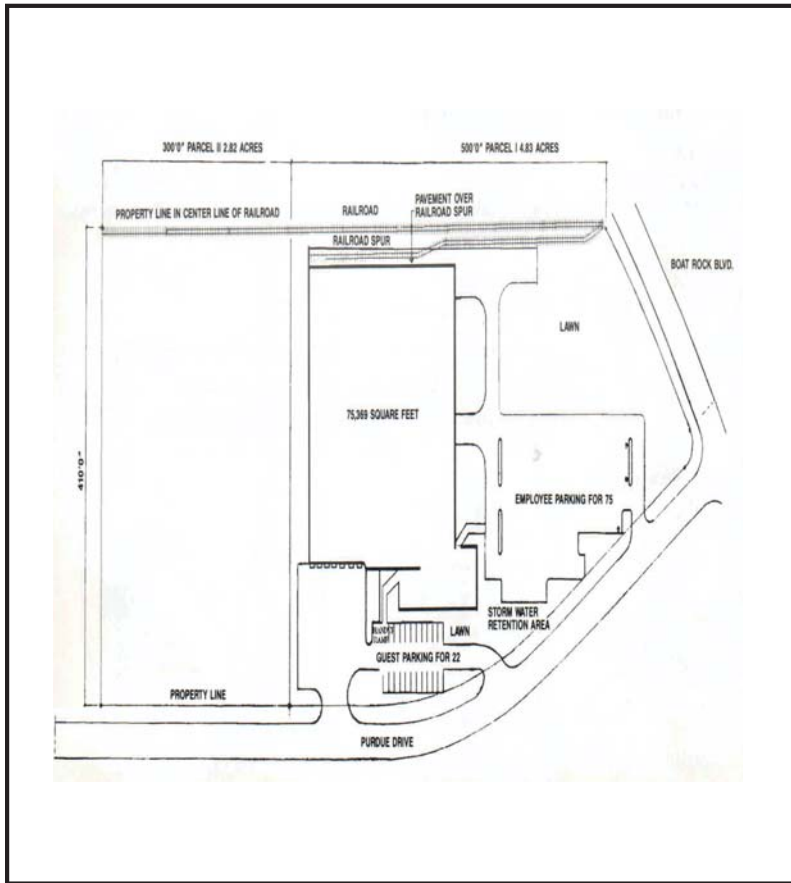
www.hgpauktion.com

COLLIERS INTERNATIONAL
Promenade, Suite 800
1230 Peachtree Street NE
Atlanta, Georgia 30309-3574
www.colliers.com

6215 PURDUE DRIVE > Building Specifications

LOCATION:	6215 Purdue Drive, Fulton County, Georgia 30336. Located in Atlanta's Fulton Industrial District. The largest industrial area in the southeast.
SIZE:	Warehouse 59,250 square feet Office 7,129 square feet Mezzanine production 9,000 square feet Total improvements 75,379 square feet
SITE:	4.83 Acres Building Site 2.82 Acres Expansion Site 7.65 Acres Total
DATE OF CONSTRUCTION:	1979 by Tolar Construction Company
CONSTRUCTION:	Exterior Walls 8" Concrete block with brick veneer. Interior Walls 5/8" Dry wall mounted on 3 5/8" metal studs. Frame Steel post and beam construction on 36' x 40' center. Foundation 6" Concrete floor slab on compacted slab base. Footings at load-bearing columns.
CEILING:	Suspended acoustical tile in office area; exposed open web steel joist system in warehouse area. 25' clear height in warehouse.
ROOF:	Tar and gravel built up over metal decking.
LOADING DOORS:	7 Overload doors at dock height; all have levelers and seals. 4 Rail doors. Rail served by CSX. 1 Drive-in door.
POWER:	3,000 Amps, 277/480 Volts Georgia Power Company
LIGHTING:	Office 2' x 4' lay-in four-tube fluorescent strips. Warehouse Metal Halide fixtures throughout, 26 skylights Exterior Pole mounted Luminare fixtures
SPRINKLERS:	Wet system throughout
INTERIOR STORAGE TANKS:	2 - 4,000 gallon 1 - 3,000 gallon 1 - 2,500 gallon
PARKING:	100+ parking spaces Additional parking available
HVAC:	Warehouse Forced air, gas fired unit heating; four roof mounted exhaust fans. Office Electrical cooling and heating by gas furnaces. Mezzanine and Production Area Electrical cooling and heating by gas furnaces.
WATER AND SEWER: <u>Fulton County</u>	6" - 8" sewer 3" water supply line 8" sprinkler supply line
GAS:	1 1/4" line to building Atlanta Gas Light
ZONING:	M1-A
TAXES:	1989 - \$34,578.00
COMMENTS:	This is an F.D.A. approved food processing and packaging facility formerly occupied by Serv-A-Portion. The building features a 9,000 square foot mezzanine processing area with air conditioning and floor drains on each level. Building features <u>four</u> large interior tanks for storage of liquids to be processed.

6215 PURDUE DRIVE > Site Plan & Future Expansion



Contact Us

RICK VAUGHN
 404 877 9276 DIRECT
rick.vaughn@colliers.com



COLLIERS INTERNATIONAL
 Promenade, Suite 800
 1230 Peachtree Street NE
 Atlanta, Georgia 30309-3574
www.colliers.com

Aerial Map



COLLIERS INTERNATIONAL
Promenade, Suite 800
1230 Peachtree Street NE
Atlanta, Georgia 30309-3574
www.colliers.com