

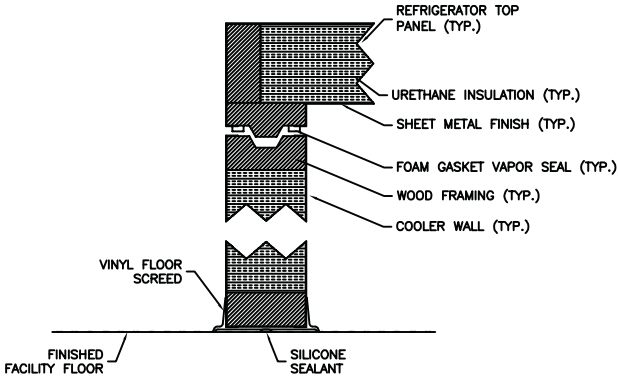
DRAWING NUMBER:
AP-5158

REVISIONS:

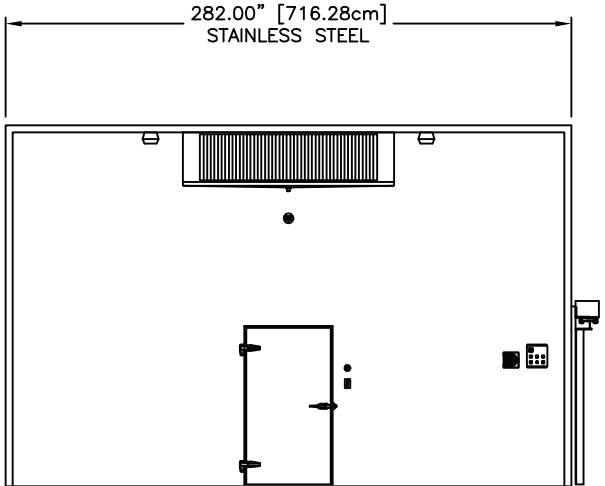
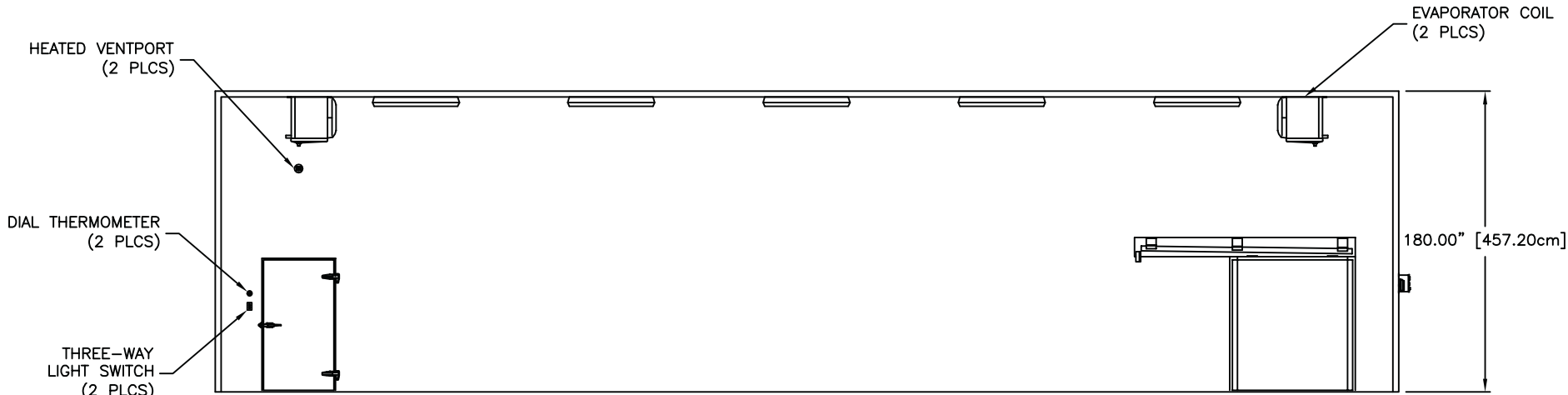
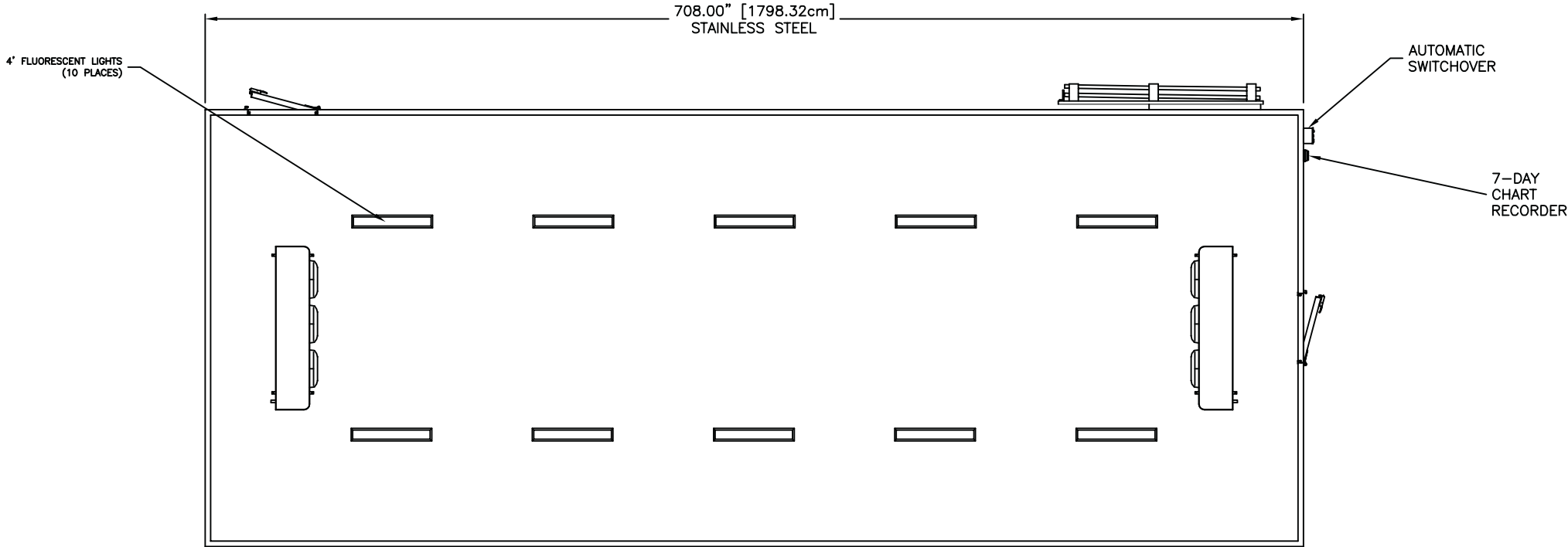
A	BY: G.N. DATE: 8/28/05 APP: K.E.B. DATE: 8/28/05
B	BY: G.N. DATE: 7-18-07 APP: DATE:

ADJUSTED SIZE AND DOOR LOCATIONS

AS BUILT LAYOUT



STANDARD WALK-IN REFRIGERATOR
WITHOUT A FLOOR



SPECIFICATIONS:

- SIZE:**
59'-0" X 23'-6" X 15' O.D.
- INTERIOR FINISH:**
STUCCO EMBOSSED ALUMINUM
- EXTERIOR FINISH WHERE NOTED:**
22 GA. POLISHED TYPE 304 STAINLESS STEEL
- REMAINDER OF EXTERIOR FINISH:**
STUCCO EMBOSSED ALUMINUM
- INTERIOR FLOOR FINISH:**
VINYL FLOOR SCREED
- DOORS:**
2 - 42" X 78.375" FLUSHMOUNT DOORS WITH HEATERS, MAGNETIC GASKETS, ADJUSTABLE BOTTOM SWEEP GASKETS, INSIDE SAFETY RELEASE, AND BRUSHED FINISH SAFETY HARDWARE
1 - 72" X 80" ELECTRIC SLIDING DOOR WITH HEATER, ADJUSTABLE BOTTOM GASKET, INSIDE SAFETY RELEASE, AND ENTRANCE AND EXIT MOTION SENSOR FOR ACCESS
- LIGHTING:**
2 - THREE-WAY LIGHT SWITCHES W/PILOT LIGHTS
10 - 4' LONG VAPORPROOF FLUORESCENT LIGHT FIXTURES
- AUTOMATIC SWITCHOVER:**
1 - AUTOMATIC SWITCHOVER FOR THE REDUNDANT REFRIGERATION SYSTEMS WITH DIGITAL READOUT, HIGH/LOW AUDIO/VISUAL ALARMS, AND CONTACTS FOR REMOTE ALARM CONNECTION
1 - AUTOMATIC SWITCHOVER FOR THE REDUNDANT SYSTEMS
- REDUNDANT REFRIGERATION SYSTEM:**
2 - REMOTE OUTDOOR CONDENSING UNITS:
MODEL #CDT0800H2C (HEATCRAFT), HIGH TEMPERATURE, 8 HP, R-22 REFRIGERANT, AIR COOLED, 75,000 BTUH (EACH) @ +35°F OPERATING TEMPERATURE
2 - EVAPORATOR COILS:
MODEL #CHA750 (CLIMATE CONTROL), THREE FAN, AIR DEFROST, 75,000 BTUH EACH
- REFRIGERATION ELECTRICAL:**
CONDENSING UNITS: 208-230 V/3 PH/60 HZ
EVAPORATOR COILS: 230 V/3 PH/60 HZ
- ELECTRICAL:**
3 - DOOR HEATERS - 115V/1 PH/60 HZ (EACH)
10 - LIGHTS - 115 V/1 PH/60 HZ (EACH)
3 - DUPLEX OUTLETS - 115 V/1 PH/60 HZ (EACH)
2 - HEATED VENTPORTS - 115 V/1 PH/60 HZ (EACH)
1 - CONDENSATE PUMP - 115 V/1 PH/60 HZ
1 - ELECTRIC SLIDING DOOR - 208-230 V/3 PH/60 HZ
- ACCESSORIES:**
7-DAY TEMPERATURE CHART RECORDER
2 - 2.00"Ø DIAL THERMOMETERS
3 - DUPLEX OUTLETS
2 - HEATED VENTPORTS
1 - CONDENSATE PUMP

THIS PRINT IS THE PROPERTY OF THERMO ELECTRON. THE INFORMATION CONTAINED HEREIN IS CONFIDENTIAL. IT IS NOT TO BE REPRODUCED, COPIED, OR USED IN ANY MANNER WITHOUT THE WRITTEN PERMISSION FROM THE OWNER AND IS RETURNABLE UPON DEMAND. ANY INFRINGEMENT UPON THE PATENT RIGHTS SHOWING HEREIN, WHETHER IN WHOLE OR IN PART, SHALL BE SEVERELY PROSECUTED.

TOLERANCES UNLESS OTHERWISE SPECIFIED

LINEAR VARIATIONS:	UP TO 24"	±0.032"
	24" TO 48"	±0.063"
	48" TO 72"	±0.125"
	72" TO 120"	±0.250"

ANGULAR VARIATIONS: ±1°

INTERNAL QUOTE NUMBER: 1

AS PART OF OUR POLICY OF CONTINUING DEVELOPMENT, THERMO ELECTRON RESERVES THE RIGHT TO ALTER SPECIFICATIONS WITHOUT PRIOR NOTICE.

Thermo
ELECTRON CORPORATION
171 Industry Drive
Pittsburgh, PA 15275-1034

Clinical Diagnostics
Anatomical Pathology
Phone: 1.800.547.7429
Fax: 1.412.788.1138

www.thermo.com

TITLE:
WALK-IN REFRIGERATOR
59'-0" X 23'-6" X 15'

CUSTOMER:
THERMO ELECTRON - PITTSBURGH, PA 15275

DRAWN BY: G.N.	DATE: 8-16-05	SCALE: 1/4" = 1'-0"	REF. NUMBER:	PART NUMBER:
CHECKED BY: D. STOLTZ	DATE: 8-16-05	DRAWING NUMBER: AP-5158	REVISION:	B
APPROVED BY: K.E.B.	DATE: 8-16-05	SHEET 1 OF 1		