

TURNKEY FACILITY OFFERING

Immediately Accepting Offers • Real Estate Included

aptuit



**Complete API Contract Manufacturing Facility
Including State of the Art Lab & Processing Suites.**

1701 W Vine St, Harrisonville, MO 64701



HERITAGE
GLOBAL PARTNERS
ASSET ADVISORY & AUCTION SERVICES

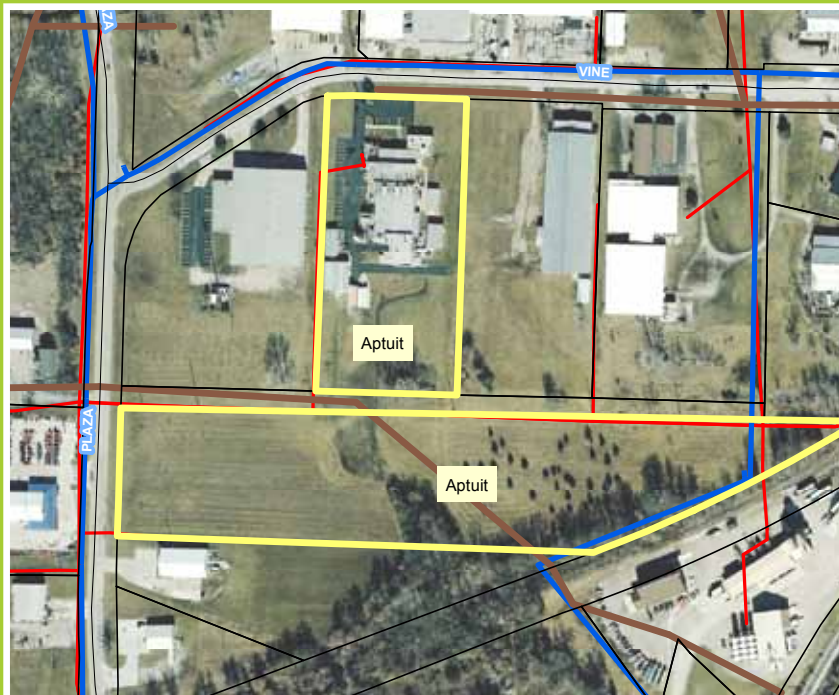
For more information including a photo gallery,
equipment list, and more, please visit

www.hgpauction.com

Items subject to prior sale. Buyers are advised &
encouraged to inspect equipment and read
all Terms and Conditions prior to auction.

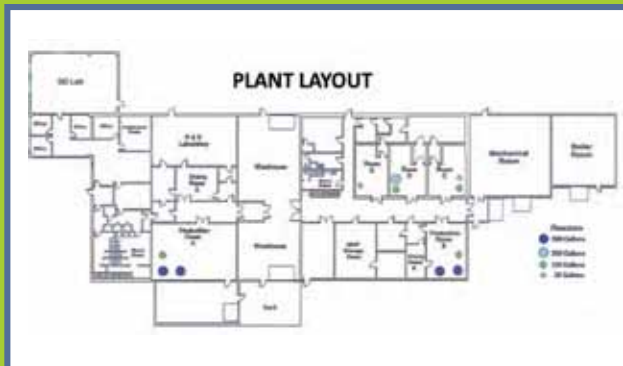
TURNKEY FACILITY OFFERING: IMMEDIATELY ACCEPTING BIDS

COMPLETE API CONTRACT MANUFACTURING FACILITY INCLUDING STATE OF THE ART LAB & PROCESSING SUITES



SITE HIGHLIGHTS

- 25,000 SQ FT ACQUIRED IN 2007
- ELEVEN TOTAL ACRES
- THREE ACRES CURRENTLY DEVELOPED
- SIZED TO SUPPORT PHASE I, II, AND III TRIALS AS WELL AS NICHE COMMERCIAL SCALE
- EXPERTISE IN HIGH-POTENCY COMPOUNDS
- FULL LAB



ISOLATED SUITES EQUIPMENT

- 1 - 250-GALLON, GLASS-LINED REACTORS
- 2 - 100-GALLON, GLASS-LINED REACTORS
- 1 - 30-GALLON, GLASS-LINED REACTOR
- 1 - 100-LITER, GLASS-LINED REACTOR
- 1 - MULTI-KILO, SCALABLE BIOTAGE, CHROMATOGRAPHY SYSTEM
- 1 - 9-LITER LYOPHILIZER
- 1 - CRYOGENIC CAPABILITY

ABOUT 10 KG/BATCH MAXIMUM



aptuit

To submit an offer or schedule a preview, visit our website @ www.hgpauction.com

LOCATION: 1701 W VINE ST, HARRISONVILLE, MO 64701



API EQUIPMENT

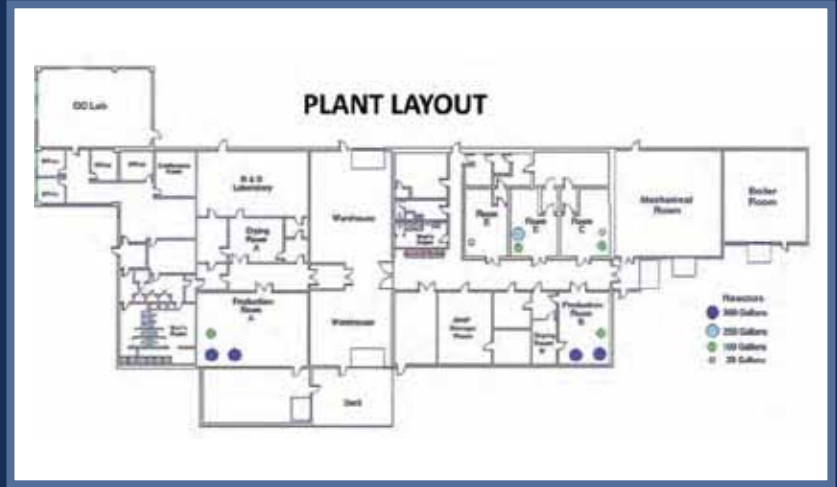
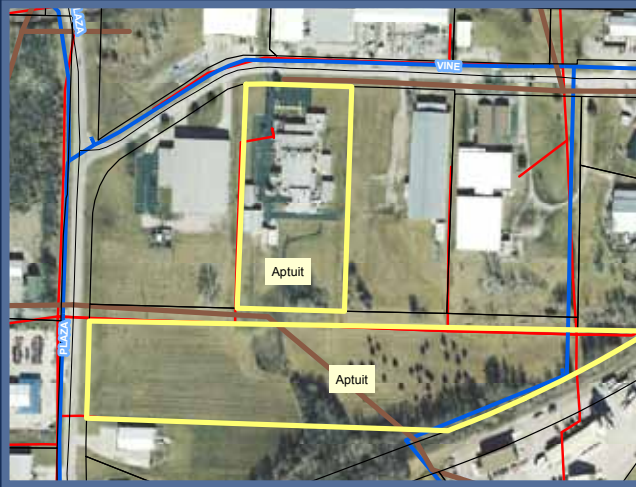
- 4 - 300 GALLON, GLASS-LINED REACTORS
- 1 - 200 GALLON HASTELLOY REACTOR
- 1 - 200 GALLON GLASS-LINED REACTOR
- 1 - 100 GALLON GLASS-LINED REACTOR
- 1 - 100 GALLON GLASS-LINE REACTOR (150 PSI/255 OC)
- 1 - PORTABLE 50 GALLON GLASS-LINED REACTOR
- 1 - PORTABLE 30 GALLON GLASS-LINED REACTOR

100 KG/BATCH MAXIMUM, METRIC TONS ANNUALLY

CONTACT

Nick Dove

Tel: 858-847-0659 Email: ndove@hginc.com



Scan this QR Code with your smartphone for More Information.

Contact Information

CONTACT NICK DOVE TO SUBMIT AN OFFER OR SCHEDULE A VISIT

Nick Dove, Tel: 858-847-0659
Email: ndove@hginc.com

For more information including a photo gallery, equipment list, and more, please visit us online at www.hgpauction.com. Items subject to prior sale. Buyers are advised & encouraged to inspect equipment and read all Terms and Conditions prior to auction.



Immediately Accepting Turnkey Offers • Real Estate Included

Complete API Contract Manufacturing Facility. Including State of the Art Lab & Processing Suites. Harrisonville, MO.

TURNKEY FACILITY OFFERING
Starting: Immediately Accepting Bids

FACILITY LOCATION
1701 W Vine St, Harrisonville, MO 64701

FACILITY PREVIEW
Preview By Appointment Only.
Contact Nick Dove to submit an offer or schedule a Visit.

For more information including a photo gallery, equipment list, and more, please visit us online at www.hgpauction.com. Items subject to prior sale. Buyers are advised & encouraged to inspect equipment and read all Terms and Conditions prior to auction.

WOULD YOU LIKE TO SELL AN ASSET?
Simply call 1.650.207.0627 and speak with Kirk Dove, Managing Partner for more information. We will be glad to listen to your specific needs and from that HGP can prepare a detailed solution for your review that will maximize the returns for you're assets for the company and It's Shareholders.

GLOBAL HEADQUARTERS
Hacienda Del Mar
12625 High Bluff Drive
San Diego, CA 92130
Phone: (877) 303.8040
Fax: (866) 388.8595

FIRST CLASS MAIL

POSTMASTER: Dated Material.
Please Deliver Promptly.

Presorted First Class Mail
U.S. Postage
PAID
San Diego, CA
Permit No. 00

For complete Terms of Sale, visit our website at:

www.hgpauction.com

AFFILIATIONS



IDEMA



semi

