

GLOBAL ONLINE AUCTION

STARTING: September 12, 7:00 am ENDING: September 13, 10:00 am *Local Time*

LOCATION:

Mayaguez, PR. 00681-3268 3075 Carr.64 Mayaguez, PR 00682-6031



Bulk and Piecemeal Auction **World Leading Tuna Processing Manufacturer**

An Outstanding Opportunity to Acquire Prime Water Front Real-Estate and Select Pieces of Surplus Plant Equipment from their Mayaguez, Puerto Rico Operations



Heritage Global Partners

Asset Advisory and Auction Services

A Legacy since 1937

www.hgpauction.com



Heritage Global Partners

Asset Advisory and Auction Services
A Legacy since 1937

GLOBAL ONLINE AUCTION

SEPTEMBER 12-13, 2012

WEDNESDAY, 7:00 am - THURSDAY, 10:00 am EDT

AUCTIONEER'S NOTE:

HGP is pleased to be selected to conduct this Global Online Auction for **Bumble Bee Foods, LLC**.

This Global Online Auction features Prime Water Front Real-Estate and select pieces of surplus plant equipment from their Mayaguez, Puerto Rico Operations.

Please view our website at www.hgpauction.com for the bidding instructions and the full terms of the sale. Thank you for your interest, and we look forward to providing you quality equipment sales and World Class Service.

PUBLIC INSPECTION AND PREVIEW:

Date/Time:

Tuesday, September 11

(9:00am - 4:00pm) or by appointment.

Location:

Mayaguez, PR. 00681-3268 3075

Carr.64 Mayaguez, PR 00682-6031

ADDITIONAL INFORMATION:

For more information including a photo gallery, equipment list, terms and conditions of sale and more, please visit:

www.hgpauction.com

Buyer's Premium: 15% cash buyers; 18% for credit card purchasers (Refer to Term 7 in the Auction Terms and Conditions for details).

SALE WILL BE CONDUCTED IN ENGLISH
AND WILL ACCEPT US CURRENCY ONLY



Tanks, Pumps and Mixers

- 200k Gal.** City Water Tank
- 40K Gal.** Water Tank with Pumps (4)
- 40K Gal.** Soybean Oil Tanks with Pumps (2)
- 40K Gal.** Bunker Tanks with Pumps (2)
- SS 9000 Gal.** Tank
- Electric Water Pumps** (3)
- J&E Hall** High Pressure Liquid Receiver Tank, Capacity 2,226 Lbs Refrigerant
- John Lentz Co. 600 Gal.** T 304 Stainless Steel Vat with Mixer
- T 304 SS Vat** with Mixer
- Lot:** (5) Assorted Water Pumps including (3) with Marathon Electric Motors and (2) Unknown
- High Pressure Washer** (900 PSI) with (8000 Gal.) Steel Tank
- Manchester 600 Gal.** Air Tank, 125 PSI, NB # 451188
- United Utensils Co. 300 Gal.** T 304 Stainless Steel Vat w/ Mixer
- Water Pump** and 30 HP Worldwide Industrial WWE30-36-286TS Electric Motor



AN OUTSTANDING OPPORTUNITY TO ACQUIRE PRIME WATER FRONT REAL-ESTATE AND SELECT PIECES OF SURPLUS PLANT EQUIPMENT FROM THEIR MAYAGUEZ, PUERTO RICO OPERATIONS



Tool Room Equipment

- Dake** Arbor Press
- Dual Wheel** Heavy Duty Pedestal Grinder
- Enerpac** 100 Ton Press
- Lincoln Electric ProCut 80** 220v Plasma Cutter with cart
- Metal Shop Benches**
- Miller XMT 304 CC** DC Inverter ARC Welder with cart
- Norton NAS2181** Heavy Duty Shop Grinder
- Ridgid 1224** 4" Pipe Threader
- Sheet Metal Brake**, Approx. 6'
- Summit** Heavy Duty Drill Press



Support Equipment

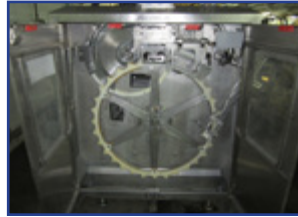
- Blue M Stabil-Therm OV-490A-2** Mechanical Oven
- Labconco 47700** Fume Hood
- Lot:** QC Lab Equipment including (2) Weight Scales (Mettler Toledo Cub II, Yamato Top Load) and Techne FTU20DP Sonic Cleaner
- Frigidaire FRT18G4AQC** Refrigerator/Freezer, 18.2 CU
- Fogel CR-25-US** Hinged Glass Door Refrigerator 23 cuft
- FT Frigidaire FFC05C3CW2** Chest Freezer, 18 CU FT
- GSE 350** Digital Platform Weight Indicator, Stainless Steel, Power: 85-265 VAC/50-60 Hz or 12-36 VDC, Display: LED, 6 digit, 0.8"
- Heatcraft Walk-In Unit Cooler** with (2) Larkin Model MMT6710MA, 10°F TD 25°F SST, 71,000 BTUH. Dimensions Approx. 20' x 35' D
- Justrite 25545** 45 Gal. Flammable Storage Cabinet
- Justrite 24160** 100 Liters Acid Storage Cabinet
- Kenmore 253** Chest Freezer
- Ridgid Professional 6.5HP** 16 Gal. Wet/Dry Vac



BULK AND PIECEMEAL AUCTION OF A WORLD LEADING TUNA PROCESSING MANUFACTURER - BUMBLE BEE FOODS, LLC

Packers

- Arpac B2200** Tray Packer
- Hermasa Tunapack 500 307** Dia. Tuna Packer, 500 Cans a Minute (Qty. 2)
- Hermasa Tunapack 300 401** Dia. Tuna Packer, 500 Cans a Minute
- Hermasa 300** Stainless Steel Tunipack. 307 Can Dia.
- Thiele** Tray Packer, with Problue10 Glue Applicator and 44' Conveyor



Printers and Labelers

- Krones 838** Canmatic Labelers
- Material Burt 401** Dia. Labelers
- Mateer Burt 300** - 400 Can Labelers w/ New Way Boxer
- Videojet** Can Line Printer (2)



**AN OUTSTANDING OPPORTUNITY TO ACQUIRE PRIME WATER FRONT REAL-ESTATE AND SELECT
PIECES OF SURPLUS PLANT EQUIPMENT FROM THEIR MAYAGUEZ, PUERTO RICO OPERATIONS**



Pelletizing and Shrinkwrapping

Arpac 105-20TW Thiele Shrink Wrapper/Tray Pack Oven
Arpac 25TW-28 Shrink Wrap Tunnel/Tray Pack Oven
Custom Made Depalletizer Elevator for 211 Dia. Cans
Custom Made Depalletizer Elevator for 401 Dia. Cans
Lantech Q-1000 Automatic Conveyorized Turntable Pal-
 let Wrapper, Maximum Load 54" long x 48" wide x 92" high
Whallon Machinery, Inc. Semi-Auto Shuttle Combo
 (Brite Stacker), 480v, full amps: 49



Generators

Cat Diesel Generator, 700Kw, 30 Hrs.
Cat 3406 Diesel Generator, 300Kw, Yr. 96
Generac 92A 01202 S Generator 10kw, Yr. 1992, with GTS
 Control Unit and Fuel Tank



Air Compressors

Quincy QSB25ANA32ES QST Rotary Air Compressors
Ingersoll-Rand IRN200H-2S 200HP Air Compressor
Ingersoll-Rand SSR-EP200 200HP, Rotary Screw Air Compressor
Ingersoll-Rand SSR-EP200 200HP, Rotary Screw Air Compressor
J&E Hall Hallscrew Screw Compressor, Model
 M3216EAQE2AD1100 (Qty. 3)



Partial Listing Only. Complete Sales Catalog Available Online @ www.hgpauktion.com



BULK AND PIECEMEAL AUCTION OF A WORLD LEADING TUNA PROCESSING MANUFACTURER - BUMBLE BEE FOODS, LLC

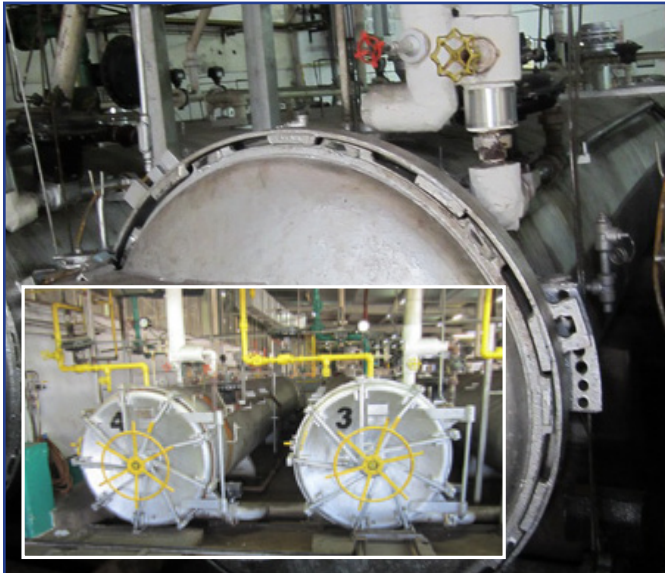
Conveyors and Elevators

- 12" Belt Conveyors, 13' L (3)
- 36" Belt Conveyors, 7' & 9' (2)
- 42" Belt Conveyors, 9' L (2)
- 48" Belt Conveyors
- 81" Accumulation Conveyor Table, 480V
- 84" Accumulation Conveyor Table, 480V w/ (2) 3HP Pumps
- 85" Accumulation Conveyor Table, 480V w/ (2) 3HP Pumps
- 96" Accumulation Conveyor Table, 25' L for 307 Dia. Cans
- 96" Accumulation Conveyor Table, 100' L for 401 Dia. Cans
- Arrowhead Lot** Includes (4pc) 25+foot 90° turn Conveyor
- Custom** Made Vertical 15' Elevator for 307 Dia. Cans
- Custom** Made Vertical 20' Elevator for 307 Dia. Cans
- Nercon** Single Can Filler with .5hp Motor
- Oil Can Feed** Conveyor for 401 Dia. Cans



Dumpers, Fillers and Shakers

- 36" Dump Belt Conveyor
- Basket Dumpers** (Assorted Sizes)
- Technocean R.A.U. Filler Shaker**, Series 236.001, Yr. 1998
- Jumble Dumper Lot:** Includes (1) Jumble Dumper (Approx. 20'L x 4'W); (1) Incline Unloader (Approx. 6'L x 4'W)
- WSF** 54" Dia. x 35' L Steel Retort, 237 F, 75 PSI (7)

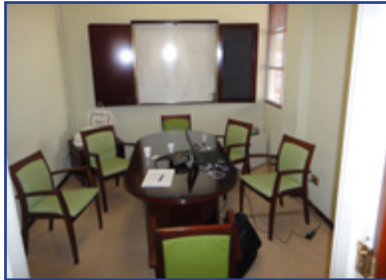


AN OUTSTANDING OPPORTUNITY TO ACQUIRE PRIME WATER FRONT REAL-ESTATE AND SELECT PIECES OF SURPLUS PLANT EQUIPMENT FROM THEIR MAYAGUEZ, PUERTO RICO OPERATIONS



Office Furnishings

Large Quantity of Office Furnishings and Equipment including



Fork Lifts / Pallet Jacks

- Caterpillar 2EC30** Electric Forklift with Charger, 42" Forks, 92" Mast
- Caterpillar E6000** Electric Forklift with Charger, 42" Forks, 92" Mast
- Caterpillar GP30** Cat LP Forklift w/ Rotator Attachment (Qty. 6)
- Caterpillar GP25k** Cat LP Forklift with Cascade 45E Push/Pull Attachment (Qty. 2)
- Caterpillar Cat LP** Forklift with Rotator Attachment
- Crown RD5220-30** Electric Standup Forklift, 36v, 3000 Lbs.
- Cap Crown SC 4000** Series Crown Electric Forklift with Cascade 35E Push/Pull Attachment and Side to Side Shift and General Battery Charger
- Clark Electric Forklift** with Charger, No Forks, 81" Mast, 9189 Hrs.
- Ballymore MR-20-AC** Electric Platform Ladder, Two Occupant 500Lbs. Cap
- JLG 2630ES ES Series** Scissor Lift, 26' platform height, 30" wide, 32' working height, 36" Roll-out deck extension, Max Weight 800 Lbs
- Raymond** Electric Riding Pallet Jacks



ASSET ADVISORY AND AUCTION SERVICES



Heritage Global Partners

Asset Advisory and Auction Services
A Legacy since 1937

Global Headquarters

Hacienda Del Mar
12625 High Bluff Drive
San Diego, CA 92130
Ph: 877-303-8040
F: 866-388-8595
www.hgpaction.com

Forwarding Service Requested



Bulk and Piecemeal Auction

An Outstanding Opportunity to Acquire Prime Water Front Real-Estate and Select Pieces of Surplus Plant Equipment from their Mayaguez, Puerto Rico Operations

GLOBAL ONLINE AUCTION : SEPTEMBER 12, 2012 - 7:00 AM EDT

On behalf of:



Bulk and Piecemeal Auction

An Outstanding Opportunity to Acquire Prime Water Front Real-Estate and Select Pieces of Surplus Plant Equipment from their Mayaguez, Puerto Rico Operations

World Leading Tuna Processing Manufacturer



AFFILIATIONS



©2012 HERITAGE GLOBAL PARTNERS. ALL RIGHTS RESERVED
Complete Terms & Conditions are contained in the Sale Catalog and on the website at www.hgpaction.com.
Please review the Terms and Conditions prior to placing bids on any items.
Global Headquarters: San Diego, California