

GLOBAL ONLINE AUCTION

Assets formerly of the world's largest beverage company



**Sale Features Bottling Lines, Canning Lines,
Packaging Equipment, Mixing Equipment, Stainless
Steel Tanks, Facility Support, and Much Much More!**



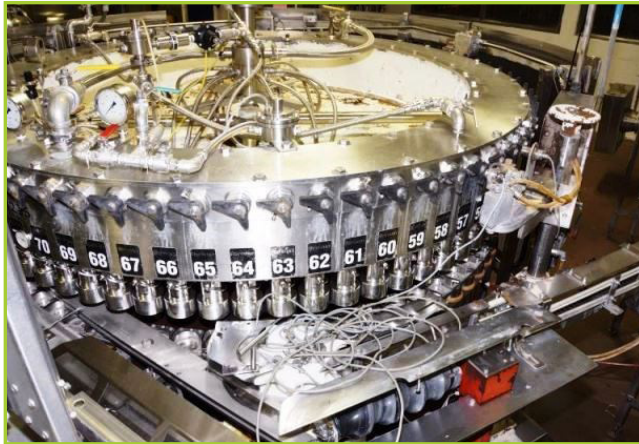
HERITAGE
GLOBAL PARTNERS
ASSET ADVISORY & AUCTION SERVICES

For more information including a photo gallery,
equipment list, and more, please visit

www.hgpauction.com

Items subject to prior sale. Buyers are advised &
encouraged to inspect equipment and read
all Terms and Conditions prior to auction.

SALE FEATURES: BOTTLING LINES, CANNING LINES, PACKAGING EQUIPMENT, MIXING EQUIPMENT, STAINLESS STEEL TANKS, FACILITY SUPPORT, AND MUCH MUCH MORE!



CROWN UB72-FTCF 72-VALVE CAN FILLER. 1280 12 OZ CANS PER MIN. S/N-GF-1092

96-VALVE FILLER WITH 16-HEAD CAPPER

1 – H&K Delta-600-96-16 96-valve Filler With 16-head Capper. New Main Bearing. New Lub Stainless Steel Injectors. Includes Alco 16 Head Capper Mdl D219-16 S/n 8. New 1996 Year of Mfg. 1986

72-VALVE CAN FILLER

1 – Crown UB72-FTCF 72-valve Can Filler. 1280 12 Oz Cans Per Min. S/N-GF-1092

66-VALVE FILLER WITH 11-HEAD CAPPER

1 – H&K Delta 600-66-11 66-valve Filler With 11-head Capper. Capper New Main Bushing On Main Spindle, New Gear Box. Filler New Bull Gear. S/N-VF66-84-71

12-SPINDLE CAN SEAMER

1 – Angelus 120L 12-spindle Can Seamer

MIX PROCESS SYSTEM

1 – Microblend Mix Process System. (2) Walker 316 L Stainless Steel Jacketed Pressure Vessels. (4) Pumps. (1) 30 hp And (3) 7.5 hp Assorted Blending Valves And Controls. Year of Mfg. 2003 and 2004

24 CAN TRAY LOADER PACKER

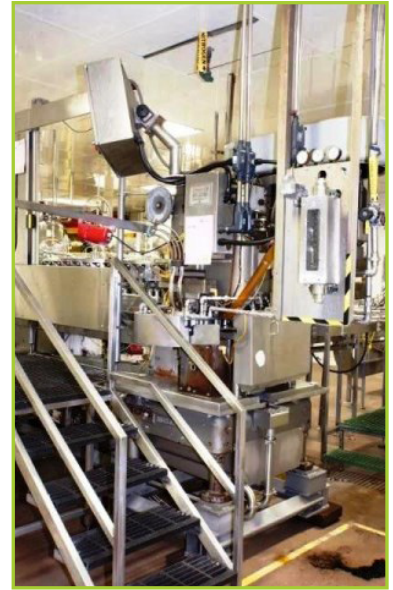
1 – Standard Knapp 263 24 Can Tray Loader Packer. Nordson 3500 V Hot Melt Glue System

AMMONIA PLATE AND FRAME CHILLER

1 – RDM Alfa-Laval A-15-BWFD Ammonia Plate And Frame Chiller



BEVCORP LLC MICRO BLEND VACUUM DEAERATOR WITH SINGLE VFD. WITH MICRO BLEND INTERFACE POWER DISTRIBUTION



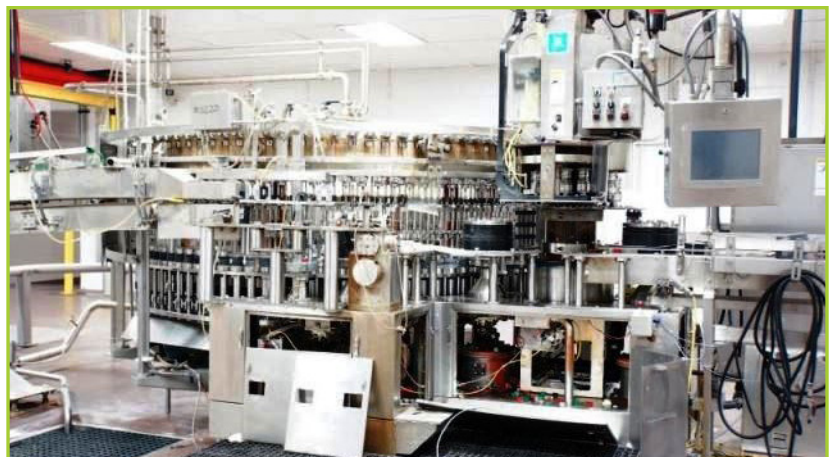
ANGELUS 120L 12-SPINDLE CAN SEAMER. S/N-10799182/OH591104



H&K DELTA 600-66-11 66-VALVE FILLER WITH 11-HEAD CAPPER. NEW MAIN BUSHING ON MAIN SPINDLE, NEW GEAR BOX. FILLER NEW BULL GEAR. S/N-VF66-84-71



ANGELUS 120L 12-SPINDLE CAN SEAMER.



H&K DELTA-600-96-16 96-VALVE FILLER WITH 16-HEAD CAPPER. NEW MAIN BEARING. NEW LUB STAINLESS STEEL INJECTORS. INCLUDES ALCO 16 HEAD CAPPER MDL D219-16 S/N 8. NEW 1996 YEAR OF MFG. 1986

To view a complete asset list, visit our website @ www.hgpauction.com

ASSETS FORMERLY OF THE WORLD'S LARGEST BEVERAGE COMPANY

STARTING: MARCH 25, 2015 – 9:00 AM CDT | ENDING: MARCH 26, 2015 – 10:00 AM CDT | LOCATION: MARYLAND HEIGHTS, MO

CONVEYORS

1 – Alliance Stainless Steel Empty Bottle Air Conveyor System.

Year of Mfg. 2004

Lot – Alliance 12" Rough Top & Slat Flat Belt Conveyors. From Case Packer To Palletizer. Approx 170 Ft. Includes Deinstalled 180 Deg Corner, Incline And Overhead Sections

Lot – Alliance Stainless Steel Conveyors. From Capper To Warmer. (6) Drive Units, (3) Section Deinstalled. Approx 50' 2" And 15" Conveyors

Lot – Alliance Stainless Steel Conveyors. From Warmer To Labelers. (13) Drive Units, Approx 160' 2" And 15" Conveyors

Lot – Alliance Stainless Steel Conveyors. From Labelers To Case Packer. (9) Drive Units, Approx 120' 2" And 15" Conveyors

MANY MORE AVAILABLE ONLINE!

TANKS

1 – 500 Gal Hot Water Insulated Tank

1 – Cherry Burrell 2,000-Gallon Top Agitated Mixing Tank. [Tank ID# 14 ; Model-CV ; s/n-2000-80-2181. Stainless Steel ; Approx 76" Straightside x 84" Diameter. With 3-hp Mixer ; With Fristam 2-hp Centrifugal Pump]

1 – Cherry Burrell 1,500 Gallon Top Agitated Mixing Tank. [Tank ID# 13 ; Model-CV ; s/n-1500-76-1553. Stainless Steel ; Approx 80" Straightside x 68" Diameter. With 3-hp Mixer. Centrifugal Pump Not Included]

4 – Cherry Burrell 5,000-Gallon Top Agitated Mixing Tank. [Tank ID# 4 ; Model-CV ; s/n-5000-68-784. Stainless Steel ; Approx 154" Straightside x 96" Diameter. With 5-hp Mixer ; With Fristam 10-hp Centrifugal Pump]

2 – Feldmeier 10,000-Gallon Top Agitated Mixing Tank. [Tank ID# 2 ; s/n-A-024-00 ; Year 2000. Stainless Steel ; Approx 128" Straightside x 144" Diameter. With 7.5-hp Mixer ; With Fristam/Baldor 3-hp Centrifugal Pump]

2 – Feldmeier 20,000-Gallon Heated Insulated Silo. [Tank ID# Silo 1 ; s/n-A-021-00. Stainless Steel ; Approx 300" Straightside x 142" Inner Diameter ; With Nettco 5KB-MSR Side Entry Agitator]

2 – Mueller 5,000-Gallon Top Agitated Jacketed Mixing Tank. [Tank ID# 8 ; s/n-119268-1. Stainless Steel ; Approx 127" Straightside x 108" Diameter. With 5-hp Mixer ; With Fristam 3-hp Centrifugal Pump]

1 – Western Filter Company Water Treatment Flocculation/Settling Reaction Tank On Steel Skid [s/n-36107 ; Year 1992 ; Skid Module Footprint Approx 44'L x 16'W x 13'H ; Steel Tank 12.5'Deep ; Capacity 36000-GPH ; Pump Not Included With Tank]

1 – Western Filter Company Water Treatment Gravity Rectangular 6-Cell Sand Filter Tank On Steel Skid (No Sand) [s/n-36107 ; Year 1992 ; Skid Module Footprint Approx 18'L x 13'W x 13.5'H ; Steel Tank 13'Deep ; Capacity 36000-GPH ; Pump Not Included With Tank]

1 – Western Filter Company Water Treatment Clearwell Tank [Flat Bottom Fiberglass Tank ; Water Storage ; 13,000-Gallon ; 18'H x 12'Diameter

MANY MORE AVAILABLE ONLINE!



MICROBLEND MIX PROCESS SYSTEM. (2) WALKER 316 L STAINLESS STEEL JACKETED PRESSURE VESSELS. (4) PUMPS. (1) 30 HP AND (3) 7.5 HP ASSORTED BLENDING VALVES AND CONTROLS. YEAR OF MFG. 2003 AND 2004



ANGELUS 120L 12-SPINDLE CAN SEAMER.
S/N-7607378 ; YEAR 2006



FELDMEIER 10,000-GALLON TOP AGITATED MIXING TANK. [TANK ID# 1 ; S/N-A-023-00 ; YEAR 2000. STAINLESS STEEL ; APPROX 128" STRAIGHTSIDE X 144" DIAMETER. WITH 7.5-HP MIXER ; WITH FRISTAM/BALDOR 3-HP CENTRIFUGAL PUMP]



SENTRY S/O-3588 WATER LOWERATOR RINSER. DEINSTALLED. CUSTOM STAINLESS STEEL COVER IN SHOP. CAPACITY, 2 LT, 1.25 LT, 1 LT. INCLUDES DELIVERY SYSTEM IN CEILING AND DISCHARGE AIR CONVEYOR DELIVERY TO FILLER AND (2) NYB BLOWERS. S/N-1250



RDM (4-TANK) SANITATION CIP SYSTEM SKID (FOOTPRINT 18'LX9'WX10.5'H ; WITH QTY-2 CONTROL CABINETS) (SYSTEM HAD SERVICED 4 BOTTLE LINE FILLERS). [EACH TANK: 200-GALLON ; BY A&B PROCESS SYSTEMS ; STAINLESS STEEL. #1 MODEL-200CTA S/N-31299301A ; #2 MODEL-200CTC S/N-31299301C ; #3 MODEL-200CTB S/N-31299301B ; #4 MODEL-200CTD S/N-31299301D] [EACH TANK SUPPORTED BY: VIEX PLATE HEAT EXCHANGERS ; ROSEMONT 1056 OR SOLUCOMP-II MULTI-PARAMETER ANALYZER ; WAUKESHA CHERRY-BURRELL 10HP/BALDOR PUMP]

CONTACT

David Barkoff

Tel: +1 650.649.0147 Email: dbarkoff@hgpauktion.com

SALE FEATURES: BOTTLING LINES, CANNING LINES, PACKAGING EQUIPMENT, MIXING EQUIPMENT, STAINLESS STEEL TANKS, FACILITY SUPPORT, AND MUCH MUCH MORE!



ALCOA JETFLOW CAP BLOWER. GAST 5 HP BLOWER. PIPING TO CAPPER

ROLLFEED HOT GLUE LABELER

2 – Trine 6500 Rollfeed Hot Glue Labeler

CASE WASHERS

1 – SJI CW-35 Case Washer. S/N-800035008

1 – SJI AK-120 Blow Off Module For Case Washer. Includes Infeed And Outfeed 2 Chain Conveyors

BLOW OFF MODULE FOR CASE WASHER

1 – SJI AK-120 Blow Off Module For Case Washer. Includes Infeed And Outfeed 2 Chain Conveyors

CASE PALLETIZERS

1 – Alvey 920 Case Palletizer. S/N-01-KL31119

1 – Simplimatic Wyard Machine Group CPA-550-MODIF Case Palletizer. 1600 24 Pack Cases Per Hour. Eaton 20 hp Hydraulic Pump, 70 Gal Tank

HIGH LEVEL BULK DEPALLETTIZER

1 – Sentry S/O-3587 High Level Bulk Depalletizer. S/N-1248

ORBITAL STYLE STRETCH WRAPPER

2 – Muller 404-Octopus Orbital Style Stretch Wrapper. Includes Roll Case Conveyors

PALLET TAGGERS

4 – ID Technologies 250 Pallet Tagger

INKJET PACKAGE CODERS

9 – Videojet Excel-170I Inkjet Package Coder

EMPTY PALLET DELIVERY SYSTEMS

2 – Alvey Accuglide System Empty Pallet Delivery System

SCRAP CHOPPERS

4 – Sweed 450-AF-WM-XHD Scrap Chopper

SHRINK WRAP BALER

1 – Kalow Technologies RV641 Shrink Wrap Baler. 480 Volts

CAP BLOWER

Lot – Includes Gast 5 hp Motor. Separate Hopper

CASE DE-NESTER

1 – Nigrelli Case De-NEster. 12" X Approx 35' Infeed Conveyor.



ALVEY 920 HIGH SPEED INLINE CASE PALLETIZER. YEAR OF MFG. 1994



SJI 8X16 CW 8' X 16' PACKAGE WARMER. YEAR OF MFG. 1994



MULLER 404-OCTOPUS ORBITAL STYLE STRETCH WRAPPER. CAPY 4' WIDE BY 6' HIGH



ACME 400-2D HIGH LEVEL BULK DEPALLETTIZER. S/N-2254-180-301



To view a complete asset list, visit our website @ www.hgpauction.com

ASSETS FORMERLY OF THE WORLD'S LARGEST BEVERAGE COMPANY

STARTING: MARCH 25, 2015 – 9:00 AM CDT | ENDING: MARCH 26, 2015 – 10:00 AM CDT | LOCATION: MARYLAND HEIGHTS, MO



ALFA-LAVAL A-15-BWFD PLATE AND FRAME AMMONIA CHILLER



CROWN UB72-FTCF 72-VALVE CAN FILLER. 1280 CANS PER MIN. INCLUDES LUB SYSTEM, UNDER CONVEYOR, INFEED CAN DRYER BLOWER. S/N-GF 72FTCUB11



STANDARD KNAPP 263 24 CAN TRAY LOADER PACKER. NORDSON 3500 V HOT MELT GLUE SYSTEM



RA PEARSON C2240 FRIDGE PACK CARTON COMBINER. NORDSON HOT MELT GLUE MACHINE

DUAL 24" AIRKNIFE

1 – Paxton XT-300/8006100 Dual 24" Airknife

NH3 PURGER SYSTEM

1 – Parker Hannifin R/S Rapid Purger System (NH3) (Design Pressure 250-PSIG/17-bar). With Logix 24-Channel Controller

SHELL WASHERS

1 – Convay hpS40-RH-SCR-A Shell Washer

Lot – Out Feed Conveyors From Shell Washer. Lot Consists Of Multiple Units

GAS-OIL-FIRED BOILERS

1 – Cleaver Brooks CB-200-200 200-hp Low Pressure CB Packaged Gas-Oil-Fired Boiler (s/n-L-61811 ; Year-1997) (Input: 8369000 BTU/Hr ; Natural Gas ; 60 GPH Oil)

LIME FEED SYSTEM

1 – Western Filter Company Lime Mixing Tank. [Tank 5'H Straightside x 6.5' Diameter ; With Lightnin Agitator Mixer ; On-Board Dust Collector Unit ; Qty-2 Norg 0.5hp Pumps ; Lenze #SMVector Drive]

VACUUM DEAERATOR WITH SINGLE VFD

1 – Bevcorp LLC Micro Blend Vacuum Deaerator With Single VFD. With Micro Blend Interface Power Distribution. 120 Volts. A & B Process Systems 479 Gal S/s Tank, Mdl 230-030-047

PACKAGE WARMER

1 – SJI 8x16 CW 8' X 16' Package Warmer. Year of Mfg. 1994

WFC CONTROLLER/HACH EQUIPMENT

1 – Controller Cabinet For Water Treatment System. Also Hach (Chlorination) Aquatrend Network System. [Control Cabinet: Stainless Steel ; 5'Lx6'H ; With Litcor Touchscreen Monitor ; Cabinet Serviced A Modular Western Filter Company Water Treatment System Series-3600-ATS-VI]

COMPLETE LISTING ONLINE MANY OTHER ASSETS INCLUDING

PUMPS, COMPRESSORS, DRYERS, VAPORIZERS, MOTORS, VALVES, HEAT EXCHANGERS, CHILLERS, FANS, PIPING, CONDUIT, DUCTS, DOOR FRAMES AND MUCH MORE!

CONTACT

David Barkoff

Tel: +1 650.649.0147 Email: dbarkoff@hgpauktion.com

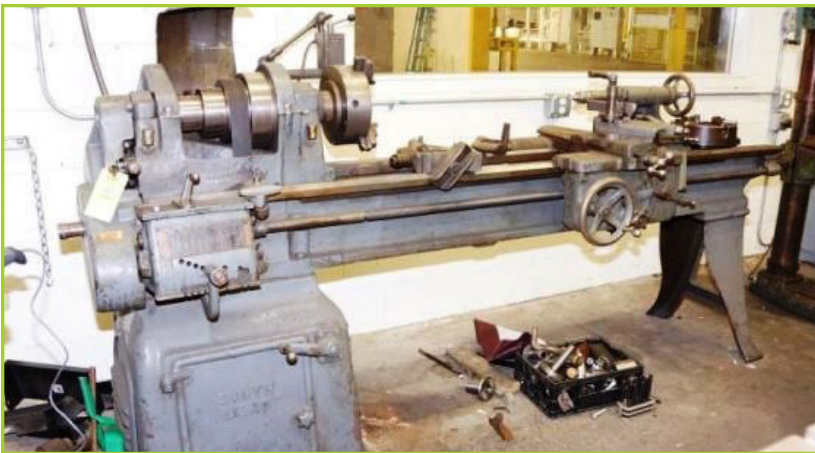
SALE FEATURES: BOTTLING LINES, CANNING LINES, PACKAGING EQUIPMENT, MIXING EQUIPMENT, STAINLESS STEEL TANKS, FACILITY SUPPORT, AND MUCH MUCH MORE!



SENTRY S/O-3587 HIGH LEVEL BULK DEPALLEZIZER



NARDINI ND 1560E 15" X 60" ENGINE LATHE. 54 MM SPINDLE BORE. D-6 SPINDLE MOUNT. 3 & 4 JAW CHUCKS. 5 C COLLETS AND PULLER. TOOL POST. TAIL STOCK. STEADY AND FOLLOW RESTS. 18 SPINDLE SPEEDS 25 TO 2,000 RPM. CARRIAGE STOP



SOUTH BEND 117E 16" X 8' BED CONE DRIVE ENGINE LATHE. 3 AND 4 JAW CHUCKS. STEADY REST. TOOL POST. TAIL STOCK



ALLIANCE STAINLESS STEEL EMPTY BOTTLE AIR CONVEYOR SYSTEM. YEAR OF MFG. 2004



DOALL LHV 16" VERTICAL METAL CUTTING BAND SAW



VILTER A446 75-HP 6-CYLINDER AMMONIA COMPRESSOR

MACHINE TOOLS

Lot – Dake & Greenerc Arbor Presses. Consists Of (2) Presses. (1) Each. 1-1/2 Ton & 3-1/2 Ton

- 1 – DoAll LHV 16" Vertical Metal Cutting Band Saw.** 220 Volt
- 1 – KBC Machinery S6008 24" Production Pedestal Drill Press.** Power Spindle Feed. Year of Mfg. 1987
- 1 – Nardini ND 1560E 15" X 60" Engine Lathe.** 54 MM Spindle Bore. D-6 Spindle Mount. 3 & 4 Jaw Chucks. 5 C Collets And Puller. Tool Post, Tail Stock. Steady And Follow Rests. 18 Spindle Speeds 25 To 2,000 Rpm. Carriage Stop
- 1 – Powermatic 1150 15" Pedestal Drill Press** W/drill Vise. No Motor
- 1 – South Bend 117E 16" X 8' Bed Cone Drive Engine Lathe.** 3 And 4 Jaw Chucks. Steady Rest. Tool Post. Tail Stock
- 1 – Trinco 48X30/BP Blast Bed Cabinet & Dust Collector.** With Dust Collector, Hose, Gun & Foot Control

AMMONIA COMPRESSORS

14 – Vilter A446 75-hp 6-Cylinder Ammonia Compressor

CENTRIFUGAL PUMP SKIDS

2 – Ingersoll Rand 2-Pumps Skid, With IR Control Panel. [I-R #1.5 x 1 x 7 - 3000 Centrifugal Pump With Baldor 10-hp Motor ; I-R #1.5 x 1 x 7 - 3000 Centrifugal Pump With USM 10-hp Motor]



To view a complete asset list, visit our website @ www.hgpaucaution.com

ASSETS FORMERLY OF THE WORLD'S LARGEST BEVERAGE COMPANY

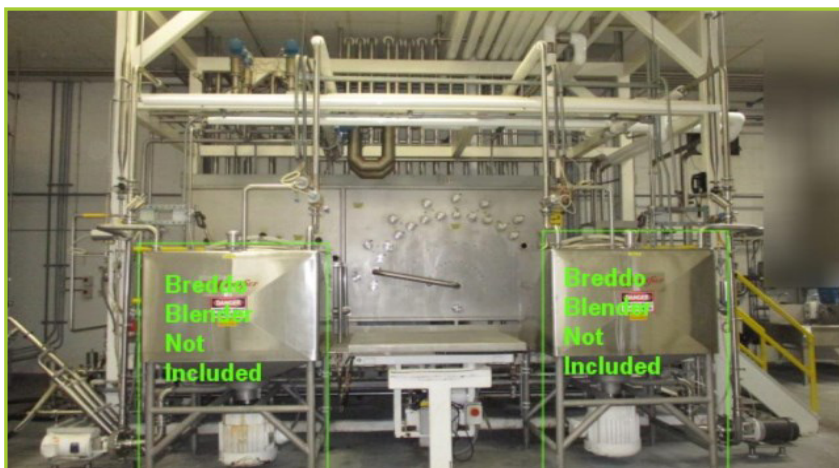
STARTING: MARCH 25, 2015 – 9:00 AM CDT | ENDING: MARCH 26, 2015 – 10:00 AM CDT | LOCATION: MARYLAND HEIGHTS, MO



HARMONY SSBH-R BOTTLE-CAN CRUSHER & BAILER WITH TOTE LIFT/DUMPER, S/N-SSHB-R-0028.
OVERALL FOOTPRINT 16'L X 15'W X 13'H ; WITH ALLEN BRADLEY C1000 PANELVIEW MONITOR/CONTROL ; METER AT 06120-HRS



CLEAVER BROOKS CB-200-200 200-HP LOW PRESSURE CB PACKAGED GAS-OIL-FIRED BOILER



SUGAR/SYRUP AND CIP, TRANSFER/JUMPER PANEL DISTRIBUTION PLATFORM (DOES NOT INCLUDE BREDDO LIKWIFIERS) (FRAMEWORK FOOTPRINT 20'L X 10'W X 16'H). INCLUDES: [CONTROL PANEL CABINET #CP-03 (SYSTEM PC COMPUTER INTERFACE NOT INCLUDED)] [25-PORT JUMPER-PANEL SECTION FOR TANKS ; 11-PORT JUMPER-PANEL SECTION FOR CIP] [WATLOW PROCESS SYSTEMS #700-00BE2134 HEAT EXCHANGER, WITH CONTROL PANEL CABINET] [QTY-4-TOTAL MICROMOTION #CMF200M35MM MASS FLOW METERS WITH CONTROLLERS/SENSORS]



EVAPCO PMCA-1170 1170-TON EVAPORATIVE CONDENSER



ZEKS HEATSINK/1200HSEA400 1200-CFM AIR DRYER



INGERSOLL RAND CENTAC-1CV14M2 400-HP CENTRIFUGAL AIR COMPRESSOR
[S/N-M99-10371 ; YEAR 1999. DESIGN: CFM 1852 ; PSIA 14.2 ; PSIG 115 ; RPM 3575. WITH SIEMENS 400-HP INDUCTION MOTOR

FACILITY SUPPORT EQUIPMENT

- 1 – Big Ass Fans 10020201 Large Overhead Fan
- 1 – Bradley Emergency Eyewash Station
- 1 – Ingersoll Rand T30/2475N5 5-hp 80-Gallon Air Compressor
- 1 – Ingersoll Rand Centac-C15M2 400-hp Centrifugal Air Compressor, s/n-M93-7128 ; Year 1993. Design: CFM 1574 ; PSIA 14.1 ; PSIG 125 ; RPM 3565. With Siemens 400-hp Induction Motor
- 1 – Philadelphia Tramrail / Republic Trash Compactor, With 10-hp Hydraulic Motor Drive
- 1 – Raised Platform With Stairs (Footprint 14'L x 8'W x 5.5'H)
- 2 – Zeks Heatsink/1600HSEA400 1600-CFM Air Dryer

CARBON TOWER

- 1 – Western Filter Company 84X144SS Water Treatment Carbon Purifier Tower

COOLING TOWERS

- 1 – BAC FXV-432 73-Ton Closed Circuit Cooling Tower
- 1 – Evapco ATW-102-3J Closed Circuit Cooling Tower

EVAPORATIVE CONDENSERS

- 1 – Evapco PMCA-1170 1170-Ton Evaporative Condenser
- 1 – Evapco PMCA-475 475-Ton Evaporative Condenser
- 1 – Evapco PMCA-450 450-Ton Evaporative Condenser

COOLING UNITS/FURNACES

- 1 – Carrier Weathermaker Combination Cooling And Heating Unit
- 1 – Trane Gas Heating, Cooling And Ventilating Unit
- 1 – York Single-Package Cooling Unit With Forced Air Furnace

CONTACT

David Barkoff

Tel: +1 650.649.0147 Email: dbarkoff@hgpauktion.com



HERITAGE GLOBAL PARTNERS

ASSET ADVISORY & AUCTION SERVICES

Due to facility vacation of:



AUCTIONEER'S NOTE

HGP is pleased to be selected to conduct this Global Online Auction for:

Coca-Cola Beverage Company

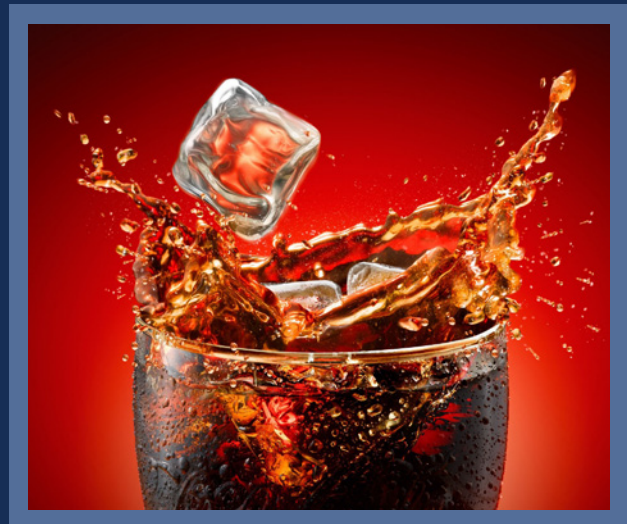
ABOUT THE SALE

This sale features Bottling lines, Canning lines, Packaging Equipment, Mixing Equipment, Stainless Steel Tanks, Facility support, and much much more!

Please view our website at www.hgpauction.com for the bidding instructions and the full terms of the sale. Thank you for your interest, and we look forward to providing you quality equipment sales and World Class Service.

KEY ASSETS

Valve Filler with 16-Head Capper • 72 Valve Can Fillers • 16-Head Capper • Lowerator Rinsers • Shell Washer • Package Warmer • Hot Glue Labelers • Spiral Case Elevator • Motion Case packer • Case Palletizers • Stretch Wrappers • Pallet Tagger • Bulk Depalletizers • Inkjet Package Coders • Carton Combiners • 12-Spindle Can Seamer • Case Washers • Agitated Mixing Tanks • CIP Systems • Water Treatment Reaction Tank • Sterilizers • CO2 Vaporizers • CO2 Purifiers • And Much More!



Scan this QR Code with your smartphone for More Information.

Contact Information

David Barkoff, Tel: +1 650.649.0147
Email: dbarkoff@hgpauction.com

A BUYER'S PREMIUM WILL APPLY AT THIS SALE

For more information including a photo gallery, equipment list, and more, please visit us online at www.hgpauction.com. Items subject to prior sale. Buyers are advised & encouraged to inspect equipment and read all Terms and Conditions prior to auction.



Assets formerly of the world's largest beverage company

Sale Features Bottling lines, Canning lines, Packaging Equipment, Mixing Equipment, Stainless Steel Tanks, Facility support, and much much more!

GLOBAL ONLINE AUCTION

Starting: March 25, 2015 – 9:00 am CDT
Ending: March 26, 2015 – 10:00 am CDT

AUCTION LOCATION

78 Progress Parkway Maryland Heights, MO 63043

AUCTION PREVIEW

HGP will host a Public Preview on:
March 25th, 2015 from 9:00am – 4:00pm

To Arrange Preview:
Call David Barkoff at +1 650.649.0147 for Details.

For more information including a photo gallery, equipment list, and more, please visit us online at www.hgpauction.com

Items subject to prior sale. Buyers are advised & encouraged to inspect equipment and read all Terms and Conditions prior to auction.

WOULD YOU LIKE TO SELL AN ASSET?

Simply call 1.650.207.0627 and speak with Kirk Dove, Managing Partner for more information. We will be glad to listen to your specific needs and from that HGP can prepare a detailed solution for your review that will maximize the returns for you're assets for the company and It's Shareholders.

GLOBAL HEADQUARTERS

Hacienda Del Mar
12625 High Bluff Drive
San Diego, CA 92130
Phone: (877) 303.8040
Fax: (866) 388.8595

FIRST CLASS MAIL

POSTMASTER: Dated Material.
Please Deliver Promptly.

Presorted First
Class Mail
U.S. Postage
PAID
San Diego, CA
Permit No. 00

For complete Terms of Sale, visit our website at:

www.hgpauction.com

AFFILIATIONS



IDEMA



INDUSTRIAL
AUCTIONEERS
ASSOCIATION



NAA
Auctioneers

