

Harnischfeger

P&H

Milwaukee, Wisconsin U.S.A.

HARNISCHFEGER CORP.
CERTIFIED PRINT
USE ONLY FOR

YOUR ORDER
OUR ORDER CI - 25994
DATE 4-26-78 OK E.N.B.

P&H Industrial Duty, Stock Component
Overhead Cranes
FEATURBILT-TYPE CI
Cab Operated - 8 Wheel
With Auxiliary Hoist

Date 4-26-78

To WISCONSIN STEEL TREATING & BLASTING

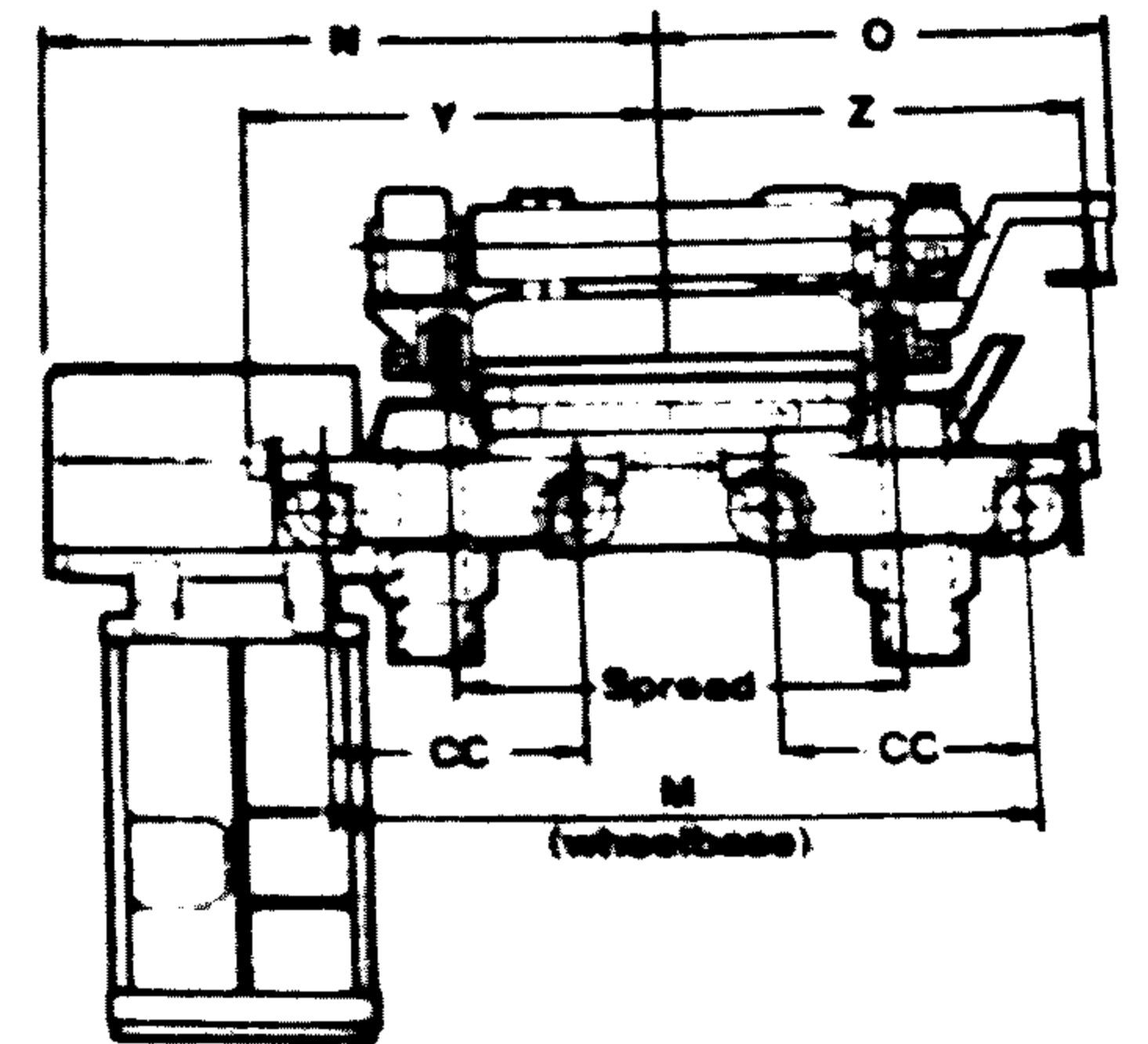
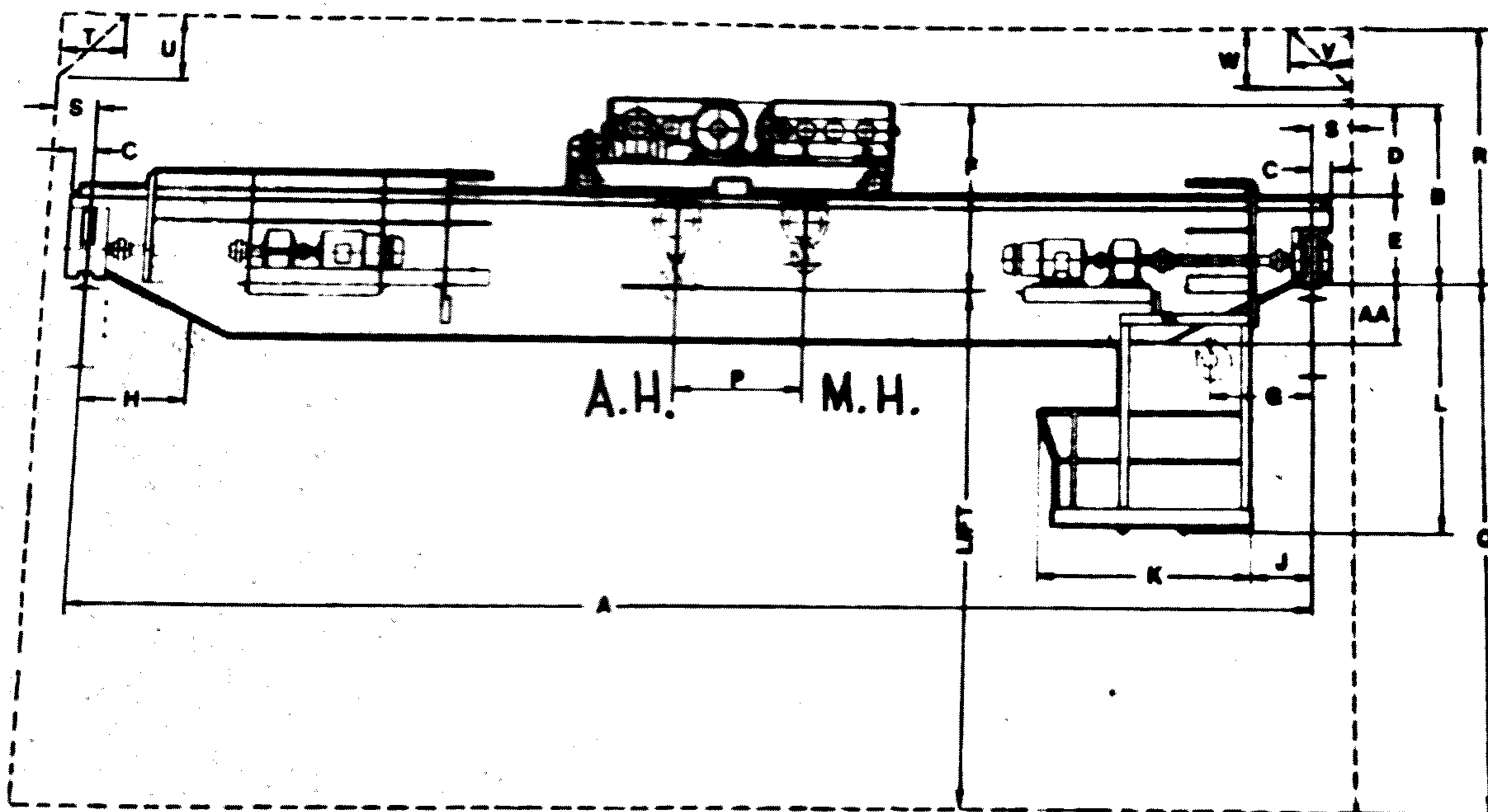
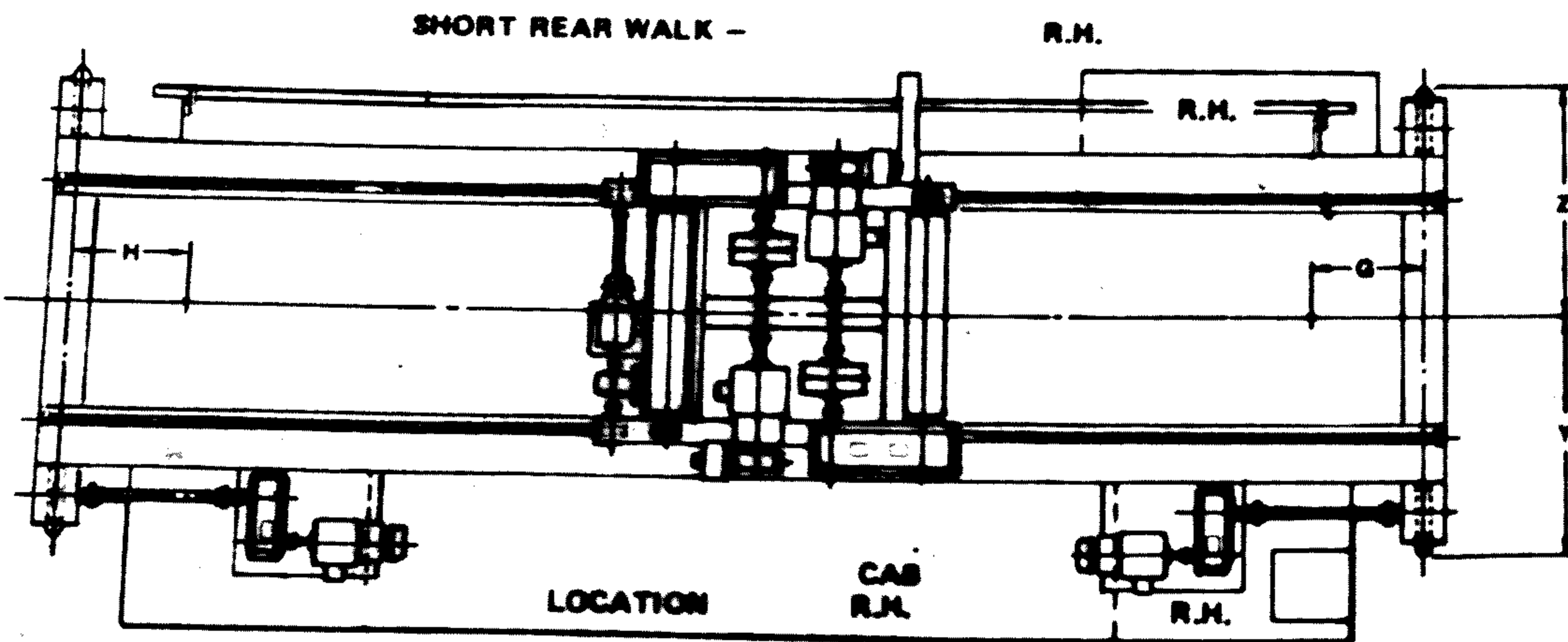
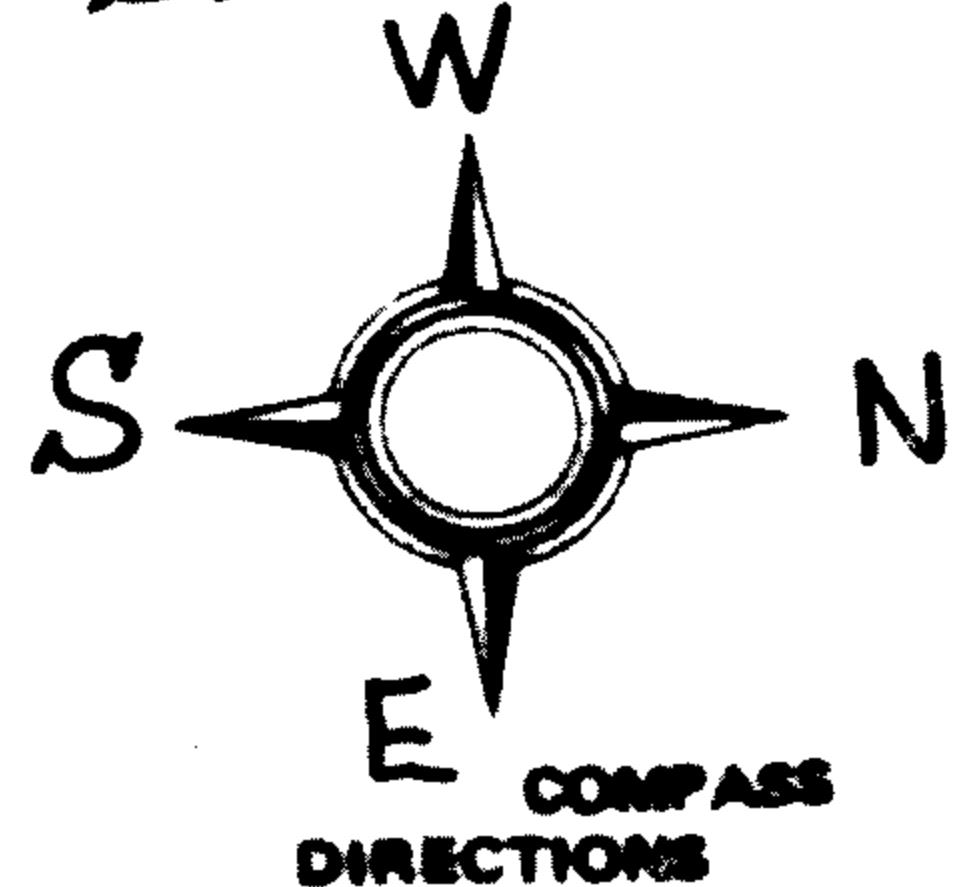
Clearance Sketch No. 50.25 CI 88

MILWAUKEE, WISCONSIN

Proposal No. MS-3817-R1

CI-# 25994

△ REV. "R," ADDED T, U, V, W
WES. 8-22-78



LOCATION OF MAIN
LINE CONDUCTORS:
AT CAB END

Note: Dimensions are not for construction unless verified by Product Engineering Department.

Capacity - Main 50Tons	F	9 ft 4 in.	P	6 ft 3 in.	Z	12 ft 4 3/4 in.	
Capacity - Aux. 25Tons	G	3 ft 9 in.	Q	41 ft 0 in.	AA	4 ft 0 in.	
Lift - MH 41 ft. 10 in.	H	4 ft 8 in.	AR	8 ft 6 in.	CC	4 ft. 10 in.	
Lift - AH 83 ft. 9 in.	J	3 ft. 0 in.	S	1 ft. 0 in.	Spread	10 ft. 0 in.	
A	82 ft. 0 in.	K	7 ft. 0 in.	T	2 ft. 10 in.	Wt. of trolley	35,000 lbs.
B	7 ft. 8 in.	L	8 ft. 6 in.	U	2 ft. 6 in.	Wt. of bridge	83,000 lbs.
C	0 ft. 10 in.	M	14 ft. 11 1/2 in.	△ V	1 ft. 3 in.	Max. load	
D	4 ft. 6 in.	N	11 ft. 10 1/2 in.	W	2 ft. 3 in.	per wheel	45,880 lbs.
E	3 ft. 2 in.	O	11 ft. 0 in.	Y	12 ft. 4 3/4 in.	Runway rail	105 lbs./yd.