

SECTION A-A

.167 PITCH - 6 THREADS PER INCH
495° FULL DEPTH THREAD

	TOLERANCE	UNITS	
E	±0.012 [0.30]	in [mm]	2.664 [67.67]
T	±0.011 [0.28]	in [mm]	2.746 [69.75]
H (Inner)	±0.007 [0.18]	in [mm]	0.382 [9.70]
H (Seated)	MINIMUM	in [mm]	0.509 [12.93]
OD	±0.010 [0.25]	in [mm]	3.038 [77.17]
OAH	±0.010 [0.25]	in [mm]	0.664 [16.87]
PART WEIGHT (ASSEMBLY)	±2.1	g	19.0

STATIC TORQUE RECOMMENDATION
28-50 in-lbs
THIS REQUIREMENT MAY VARY DEPENDING UPON BOTTLE MATERIAL, NECK FINISH, AND CAPPING EQUIPMENT

THE CLOSURE DIMENSIONS DEPICTED ARE THOSE WHICH HAVE GENERALLY BEEN FOUND TO BE FUNCTIONAL BASED ON INDUSTRY EXPERIENCE BECAUSE OF VARIABILITY IN GLASS AND PLASTIC CONTAINER FINISHES, EACH CLOSURE/FINISH SYSTEM SHOULD BE INDIVIDUALLY EVALUATED AND TESTED TO ENSURE IT MEETS APPLICABLE PERFORMANCE CRITERIA. SEE QUALITY ASSURANCE SPECIFICATIONS FOR ADDITIONAL INFORMATION.

MOLD-RITE, WEATHERCHEM AND STULL TECHNOLOGIES RESERVES THE RIGHT TO REVISE ANY OR ALL SPECIFICATIONS AND REQUIREMENTS.

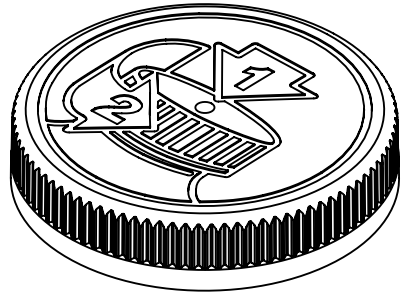
DRAWING TYPE : CUSTOMER	
DIMENSIONS ENCLOSED IN () INDICATE REFERENCE DIMENSIONS AND NO TOLERANCE LIMITS ARE ESTABLISHED	
TOLERANCES UNLESS OTHERWISE SPECIFIED	
DIMENSION (inches)	TOLERANCE
0-0.787	±0.006
0.788-1.181	±0.008
1.182-2.756	±0.012
2.757-3.937	±0.016
3.938-5.096	±0.020
5.097-7.874	±0.024
7.875-9.843	±0.032
ANGULAR TOLERANCE ± 2°	
PROPRIETARY AND CONFIDENTIAL	
THIS DRAWING IS PROTECTED BY COPYRIGHT AND CONTAINS INFORMATION PROPRIETARY TO MOLD-RITE, WEATHERCHEM AND STULL TECHNOLOGIES. ANY REPRODUCTION, DISCLOSURE, OR USE OF ITS CONTENTS OR ANY PART THEREOF IS EXPRESSLY PROHIBITED EXCEPT AS MOLD-RITE, WEATHERCHEM AND STULL TECHNOLOGIES OTHERWISE MAY AGREE IN WRITING	

MOLD-RITE PLASTICS™
Innovative • Reliable • Responsive

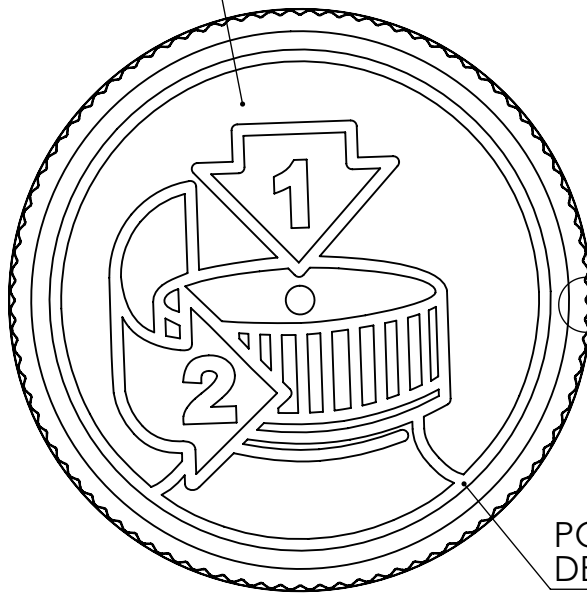
THIRD ANGLE PROJECTION SOLIDWORKS	DISTRIBUTION CODE D	DRAWING NAME 70-400 CRC ASSM PICTO DEBOSSED LOGO
DRAWN BY: L BROZELL		DRAWING NUMBER CQA-10125
QA APPR: A PAINE		MATERIAL PP/CO-POLY
DATE: 01/15/15		MODEL NUMBER: 10125-01-AA 70MM PDT ASSM (MASTER)
DATE: 07/06/16		SCALE SHEET SIZE SHEET REV N/P 2:3 8½ x 11 1 of 3 02 AC

REVISION HISTORY

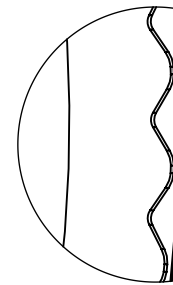
REV	N/P	DATE	REVISION	DE
00	AA	01/15/15	INITIAL DRAWING	LMB
01	AA	05/08/15	UPDATED DRAWING FOR VALIDATION RUN DATA	CDB
02	AA	06/11/15	UPDATED DRAWING FOR RELEASE	CDB
02	AB	06/30/15	UPDATED DRAWING FOR CORRECTED DATA	CDB
02	AC	07/05/16	ADDED H (SEATED) PAGE 1. CORRECTED BOTTLE BEAD 2.603 WAS 3.603	BDG



MATTE FINISH
TOP SURFACE



RIB



DETAIL RIB
SCALE 5 : 1
(92) EQUISPACED RIBS

POLISHED INSTRUCTIONS
DEBOSSED 0.010 [0.25]

THE CLOSURE DIMENSIONS DEPICTED ARE THOSE WHICH HAVE GENERALLY BEEN FOUND TO BE FUNCTIONAL BASED ON INDUSTRY EXPERIENCE BECAUSE OF VARIABILITY IN GLASS AND PLASTIC CONTAINER FINISHES, EACH CLOSURE/FINISH SYSTEM SHOULD BE INDIVIDUALLY EVALUATED AND TESTED TO ENSURE IT MEETS APPLICABLE PERFORMANCE CRITERIA. SEE QUALITY ASSURANCE SPECIFICATIONS FOR ADDITIONAL INFORMATION.

MOLD-RITE, WEATHERCHEM AND STULL TECHNOLOGIES RESERVES THE RIGHT TO REVISE ANY OR ALL SPECIFICATIONS AND REQUIREMENTS.

DRAWING TYPE : CUSTOMER

DIMENSIONS ENCLOSED IN () INDICATE REFERENCE DIMENSIONS AND NO TOLERANCE LIMITS ARE ESTABLISHED

TOLERANCES UNLESS OTHERWISE SPECIFIED

DIMENSION (inches)	TOLERANCE	DIMENSION (mm)	TOLERANCE
0-0.787	±0.006	0-20	±0.152
0.788-1.181	±0.008	21-30	±0.203
1.182-2.756	±0.012	31-70	±0.305
2.757-3.937	±0.016	71-100	±0.406
3.938-5.096	±0.020	101-150	±0.508
5.097-7.874	±0.024	151-200	±0.610
7.875-9.843	±0.032	201-250	±0.813

ANGULAR TOLERANCE ± 2°

PROPRIETARY AND CONFIDENTIAL

THIS DRAWING IS PROTECTED BY COPYRIGHT AND CONTAINS INFORMATION PROPRIETARY TO MOLD-RITE, WEATHERCHEM AND STULL TECHNOLOGIES. ANY REPRODUCTION, DISCLOSURE, OR USE OF ITS CONTENTS OR ANY PART THEREOF IS EXPRESSLY PROHIBITED EXCEPT AS MOLD-RITE, WEATHERCHEM AND STULL TECHNOLOGIES OTHERWISE MAY AGREE IN WRITING



DISTRIBUTION CODE
D

DRAWING NAME
**70-400 CRC ASSM
PCTO DEBOSSED LOGO**

DRAWN BY: REFER TO PAGE 1

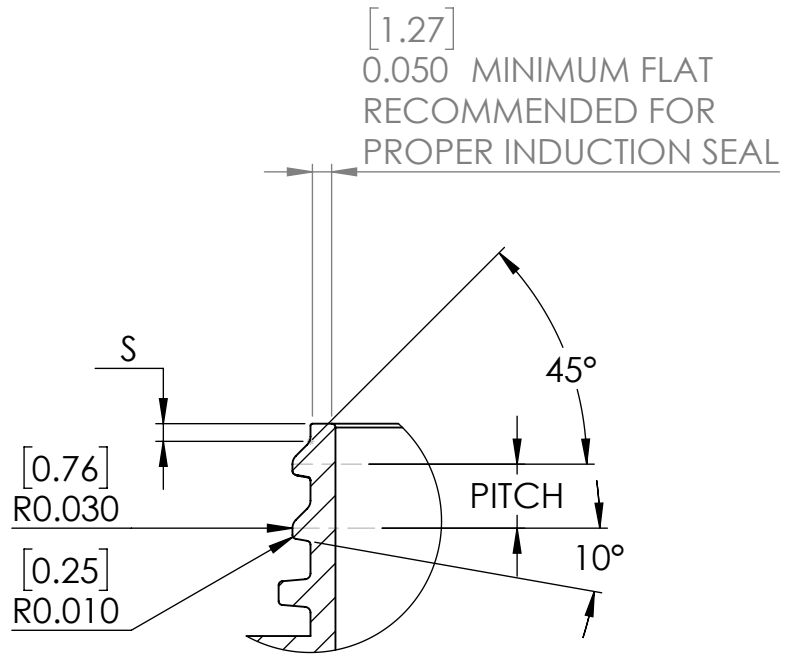
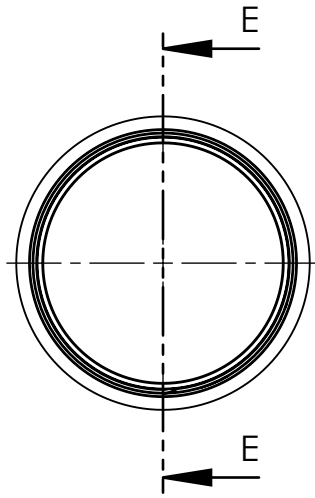
DRAWING NUMBER
CQA-10125

QA APPR: REFER TO PAGE 1

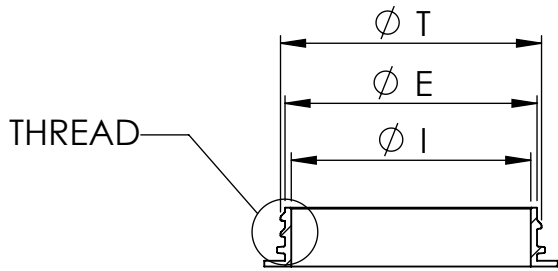
MATERIAL
SEE NOTES

SCALE	SHEET SIZE	SHEET	REV	N/P
	8½ x 11	2 of 3	02	AC

Recommended Neck Finish

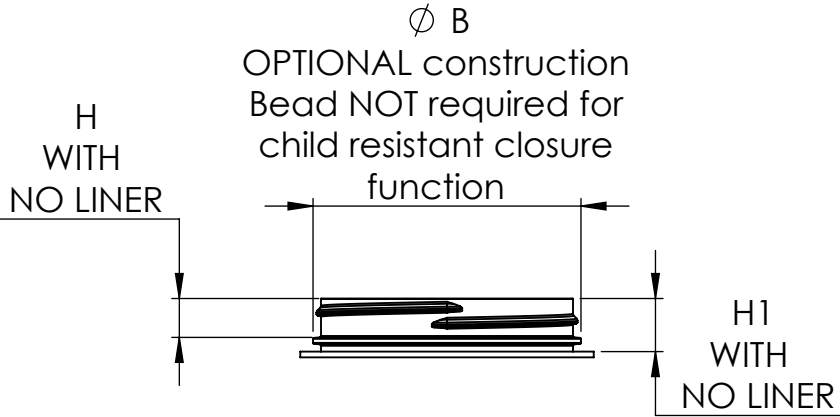


[1.27]
0.050 MINIMUM FLAT
RECOMMENDED FOR
PROPER INDUCTION SEAL



SECTION E-E
SCALE 1 : 2

DETAIL THREAD
SCALE 2 : 1



	TOLERANCE	UNITS	
E	±0.017 [0.43]	in [mm]	2.625 [66.68]
T	±0.017 [0.43]	in [mm]	2.719 [69.06]
I	MINIMUM	in [mm]	2.247 [57.07]
S	±0.015 [0.38]	in [mm]	0.046 [1.17]
H	MINIMUM	in [mm]	0.393 [9.98]
H1	MINIMUM	in [mm]	0.538 [13.67]
B	MAXIMUM	in [mm]	2.800 [71.12]
TPI			6
PITCH		in [mm]	0.167 [4.23]

THE CLOSURE DIMENSIONS DEPICTED ARE THOSE WHICH HAVE GENERALLY BEEN FOUND TO BE FUNCTIONAL BASED ON INDUSTRY EXPERIENCE BECAUSE OF VARIABILITY IN GLASS AND PLASTIC CONTAINER FINISHES, EACH CLOSURE/FINISH SYSTEM SHOULD BE INDIVIDUALLY EVALUATED AND TESTED TO ENSURE IT MEETS APPLICABLE PERFORMANCE CRITERIA. SEE QUALITY ASSURANCE SPECIFICATIONS FOR ADDITIONAL INFORMATION.

MOLD-RITE, WEATHERCHEM AND STULL TECHNOLOGIES RESERVES THE RIGHT TO REVISE ANY OR ALL SPECIFICATIONS AND REQUIREMENTS.

DRAWING TYPE : CUSTOMER

DIMENSIONS ENCLOSED IN () INDICATE REFERENCE DIMENSIONS AND NO TOLERANCE LIMITS ARE ESTABLISHED

TOLERANCES UNLESS OTHERWISE SPECIFIED

DIMENSION (inches)	TOLERANCE	DIMENSION (mm)	TOLERANCE
0-0.787	±0.006	0-20	±0.152
0.788-1.181	±0.008	21-30	±0.203
1.182-2.756	±0.012	31-70	±0.305
2.757-3.937	±0.016	71-100	±0.406
3.938-5.096	±0.020	101-150	±0.508
5.097-7.874	±0.024	151-200	±0.610
7.875-9.843	±0.032	201-250	±0.813

ANGULAR TOLERANCE ± 2°

PROPRIETARY AND CONFIDENTIAL

THIS DRAWING IS PROTECTED BY COPYRIGHT AND CONTAINS INFORMATION PROPRIETARY TO MOLD-RITE, WEATHERCHEM AND STULL TECHNOLOGIES. ANY REPRODUCTION, DISCLOSURE, OR USE OF ITS CONTENTS OR ANY PART THEREOF IS EXPRESSLY PROHIBITED EXCEPT AS MOLD-RITE, WEATHERCHEM AND STULL TECHNOLOGIES OTHERWISE MAY AGREE IN WRITING



DISTRIBUTION CODE
D

DRAWING NAME
**70-400 CRC
RECOMMENDED NECK FINISH**

DRAWING NUMBER
CQA-10125

DRAWN BY: REFER TO PAGE 1

QA APPR: REFER TO PAGE 1

MATERIAL

SCALE	SHEET SIZE	SHEET	REV	N/P
1:2 & NOTED	8½ x 11	3 of 3	02	AC