

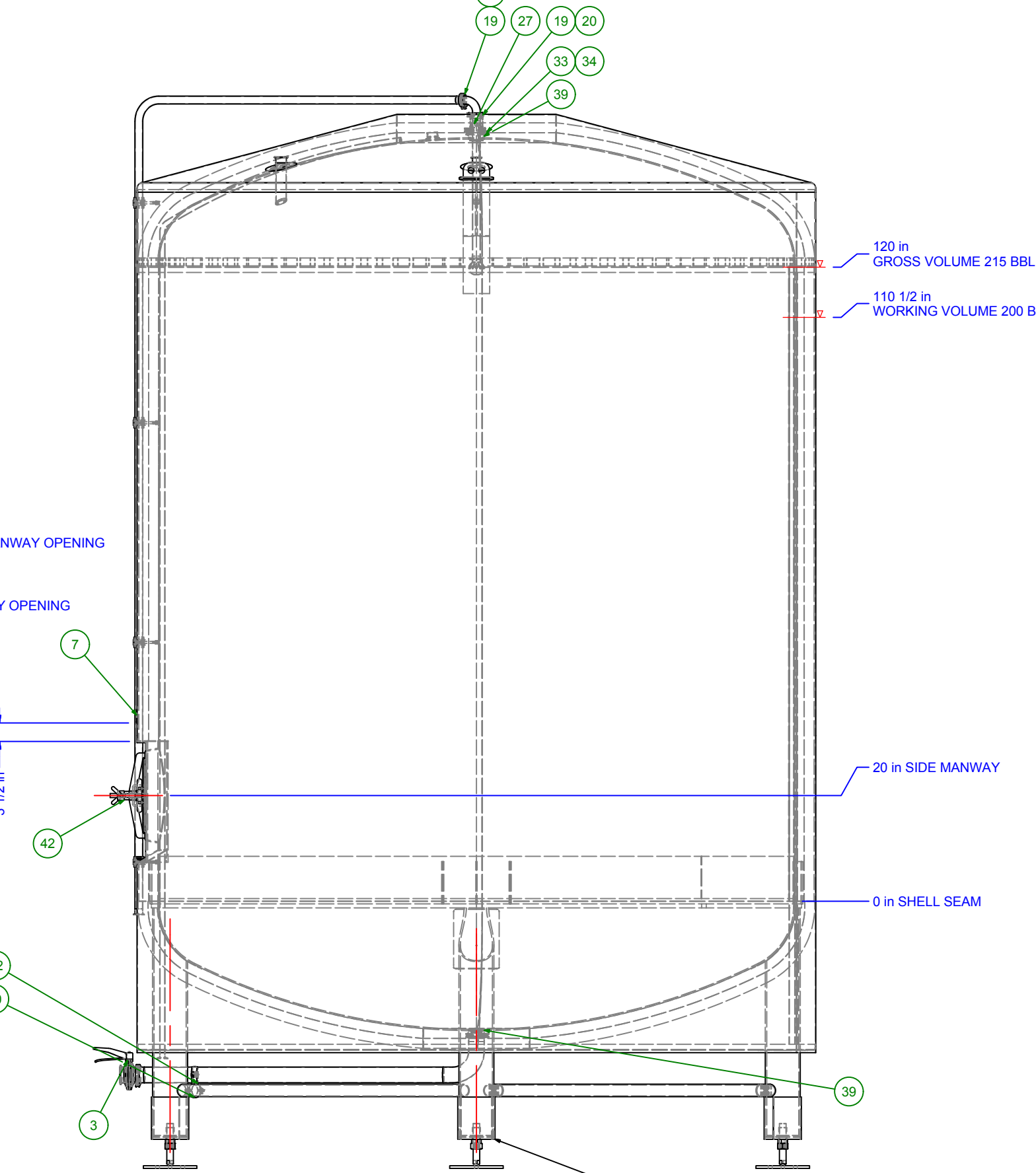
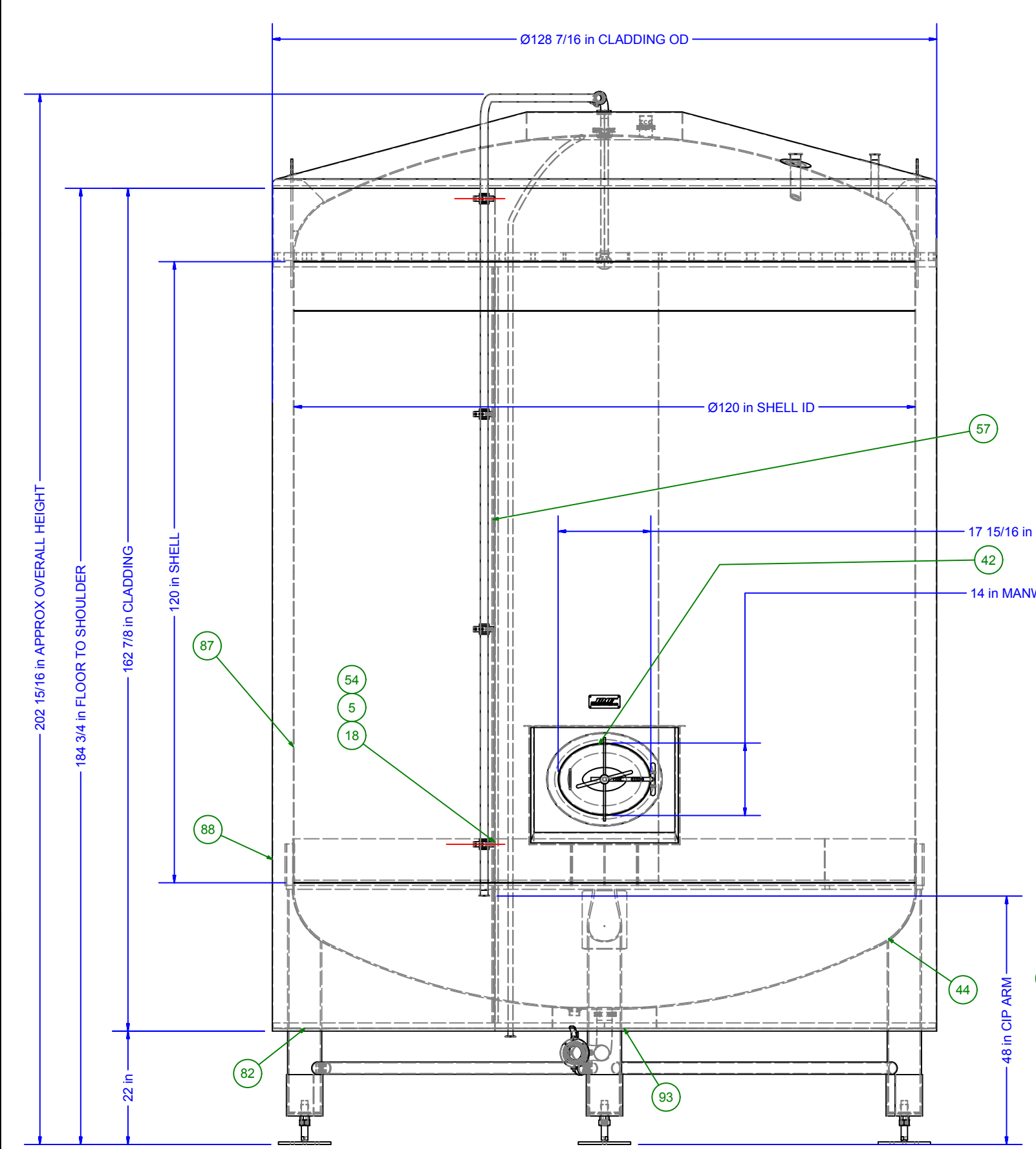
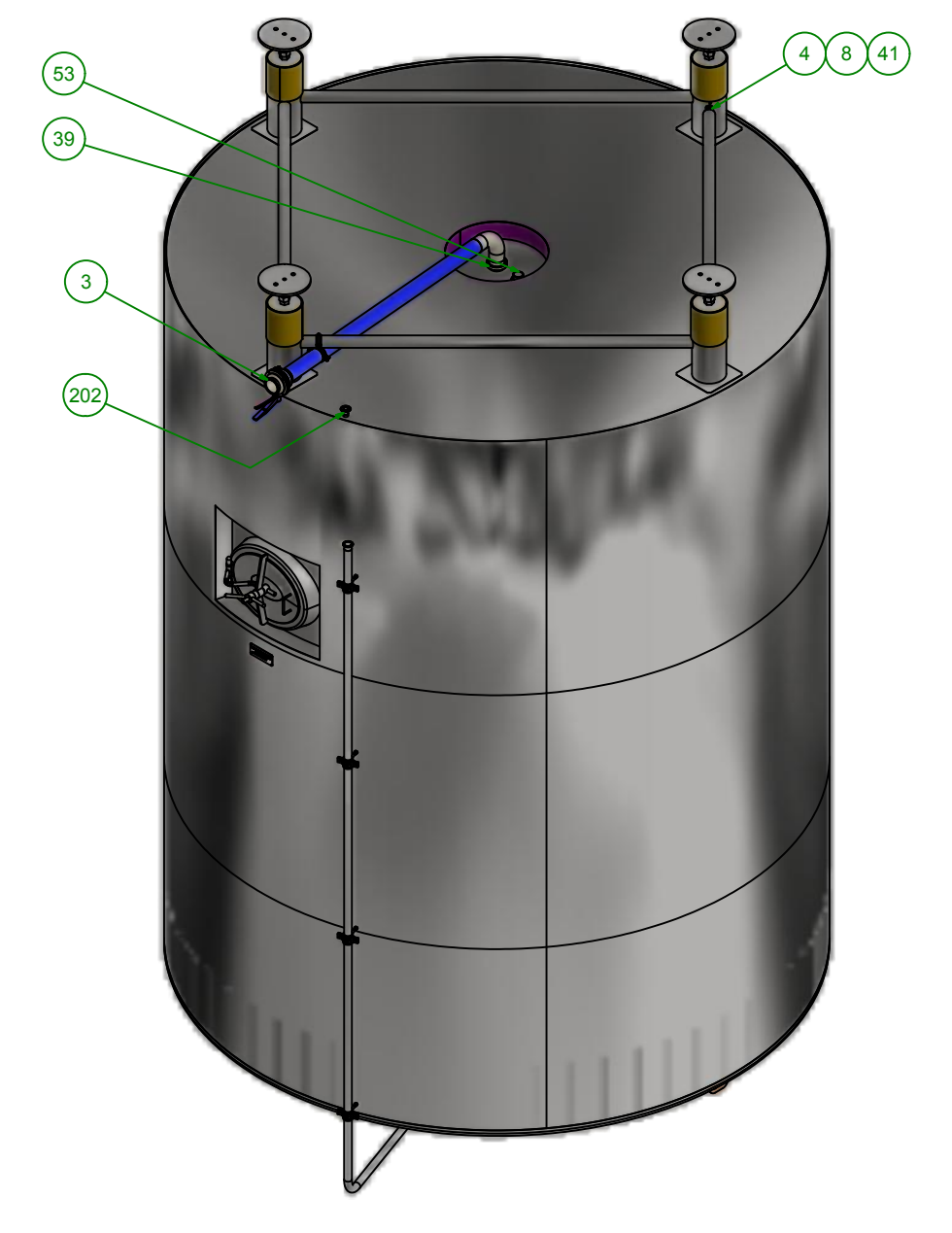
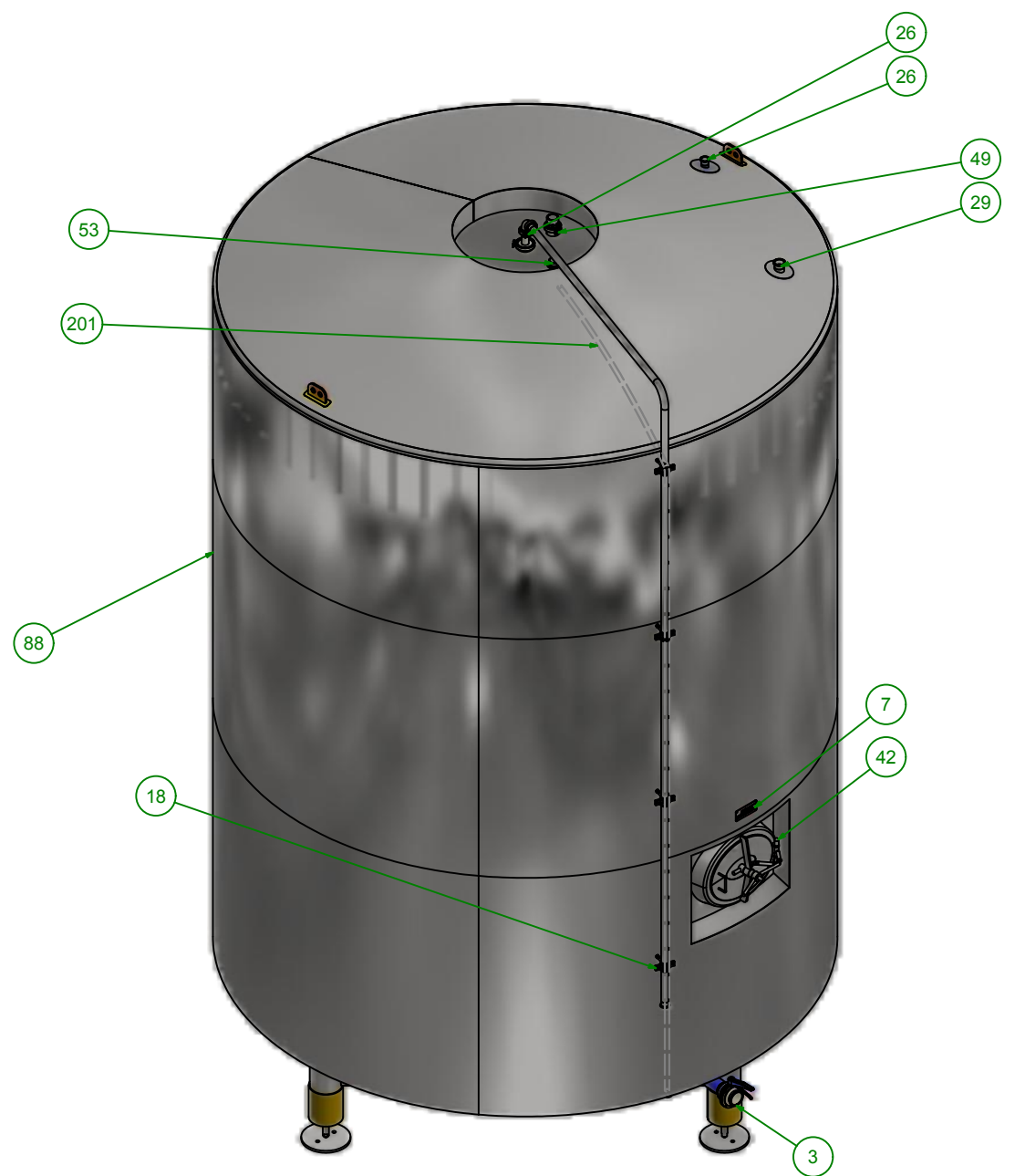
**WELD FINISH**

- INTERIOR: GROUND FLUSH, STAIN REMOVED, POLISHED TO #4 FINISH ON MARGIN
- EXTERIOR CLADDING: GROUND FLUSH, STAIN REMOVED, POLISHED TO #4 FINISH ON MARGIN
- EXTERIOR HEAD: ROUGH STARTS AND STOPS REMOVED, STAIN REMOVED, BRIGHENED ON A MARGIN
- TRIM RINGS: ROUGH STARTS AND STOPS REMOVED, STAIN REMOVED, BRIGHENED ON A MARGIN

**MATERIAL FINISH**

- SHELL: 2B
- CLADDING: #4 POLISH
- LEGS: GLASS BEADED

Parts List						Parts List					
ITEM	QTY	PART NUMBER	DESCRIPTION	LENGTH	WIDTH	ITEM	QTY	PART NUMBER	DESCRIPTION	LENGTH	WIDTH
86	2	SSS481203754	48 X 120 X 3/8 PLATE 304 HRAP	9 13/16 in	5 13/16 in	1	1	BALTOPP65X15	65mm DIA x 1.5" TUBE TOP PATTERN		
87	1	SSS601201026	60 X 120 X 10GA 316L-2B	377 3/8 in	120 in	3	1	BFV30000002T	3" T/C BUTTERFLY VALVE		
88	1	SSS601201444	60 X 120 X 14 GA T304 #4	162 7/8 in	404 3/16 in	4	4	BLT037100000	3/8" X 1" BOLT		
89	1	SSS601201444	60 X 120 X 14 GA T304 #4	134 7/8 in	134 7/8 in	5	4	BLT037500000	Head Off		
90	1	SSSBLOWOUTPATCH02	6" OD 2" ID			7	1	DMEPLATENAME1	DME BREWING SOLUTIONS, USA/CDN		
91	1	SSSBLOWOUTPATCH04	6" OD 2" ID			8	8	F/W037500000	3/8" S/S WASHER		
93	4	SSSLEGRIMFT040P	4" PIPE LEG TRIM RING			11	1	INS15MINWOOLROL	1.5" MINERAL WOOL 48" W X 30'L G MFFSK112	389 1/16 in	54 13/16 in
95	1	VPR25000TCO	2 1/2" T/C VACUUM/PRESS RELIEF 14.7 PSI PRESSURE 1 PSI VACUUM			12	1	INS15MINWOOLROL	1.5" MINERAL WOOL 48" W X 30'L G MFFSK112	400 13/16 in	57 3/4 in
101	1	JEN20007TUBE316	2 SAN. TUBE T316/316L POL ID/OD	7 15/16 in		13	1	INS15MINWOOLROL	1.5" MINERAL WOOL 48" W X 30'L G MFFSK112	389 1/16 in	59 7/8 in
201	1	JEN10007TUBE	1" DIA. SANITARY TUBING, T304	206 1/2 in		14	1	INS15MINWOOLROL	1.5" MINERAL WOOL 48" W X 30'L G MFFSK112	400 13/16 in	62 13/16 in
202	1	JEN10010FERR	1"x 1 1/8" LONG, T304 FERRULE	1 1/8 in		15	1	INS15MINWOOLROL	1.5" MINERAL WOOL 48" W X 30'L G MFFSK112	381 15/16 in	120 in
						16	1	INS15MINWOOLROL	1.5" MINERAL WOOL 48" W X 30'L G MFFSK112	381 15/16 in	120 in
						18	4	JEN15000ANCHPVC	1 1/2" TUBE HANGER c/w PVC SLEEVE		
						19	2	JEN15000CLMP	1 1/2" CAST HEAVY DUTY CLAMP		
						20	2	JEN15000GASEPDM	1-1/2" T/C EPDM GASKET, 40MP-E-1-1/2		
						23	1	JEN15007TUBE316	1-1/2 DIA SANITARY TUBE T316 #7	7 3/4 in	
						24	1	JEN15007TUBE316	1-1/2 DIA SANITARY TUBE T316L #7	23 1/8 in	
						25	1	JEN15007TUBE316	1-1/2 DIA SANITARY TUBE T316L #7	217 1/16 in	
						26	4	JEN15010FERR316	1 1/2"x 1 1/8" LONG FERR., T316L		
						27	1	JEN15907TCEL316	1.5" 90 DEG T/C ELBOW, T316		
						29	1	JEN20010FERR6	2"x 1 1/8" L T/C FERRULE SS316L	1 1/8 in	
						30	1	JEN25000ANCH.CN	2 1/2" TUBE HANGER, NO STAND OFF		
						31	1	JEN25000CLMP	2 1/2" CAST HEAVY DUTY CLAMP, T304		
						32	1	JEN30000ANCH.CN	3in TUBE HANGER, NO STAND OFF		
						33	3	JEN30000CLMP	3" HEAVY DUTY CLAMP		
						34	3	JEN30000GASEPDM	3" T/C EPDM GASKET		
						35	1	JEN30000TCCP316	3" T/C CAP T316L		
						36	1	JEN30007TUBE316	3 DIA SANITARY TUBE T316/316L POL ID/OD	56 3/4 in	
						39	4	JEN30010FERR316	3"x 1 1/8" L T/C FERRULE		
						41	4	L/N037000000	3/8" LOCK NUT		
						42	1	MAN17013WZCB.CN	SHADOWLESS MANWAY		
						43	1	NON STOCK	120in ID 0.25in THK 12in KR SS316L		
						44	1	NON STOCK	120in ID 0.25in THK 12in KR SS316L		
						45	1	NON STOCK	2 1/2" EPDM GASKET		
						49	1	NON STOCK	2 1/2"x 3" L FERRULE SS316L	3 in	
						50	1	NON STOCK	3" 90 DEG. BW ELBOW POL. ID/OD SS316L		
						51	1	NON STOCK	3/4" X 1-1/4" S/S FLAT T304	382 in	
						52	4	NON STOCK	MCM98804A522, S/S 1-1/4" - 7UNC THREADED ROD	8 in	
						53	2	NON STOCK	UNI D65 WELD IN ADAPTOR (ENDRESS & HAUSER)		
						54	8	NUT037000000	3/8" S/S HEX NUT		
						55	4	NUT125000000	1-1/4" - 7 S/S HEX NUT 18.8		
						56	4	NUT12500COUPLING	1-1/4"-7 S/S MACHINED COUPLING NUT		
						57	1	SSA12121874	1-1/4 X 1-1/4 X 3/16 SS ANGLE T304	146 1/16 in	
						58	1	SSF012150004	1/8" X 1-1/2" S/S FLAT T304	401 7/8 in	
						59	12	SSF025150004	1/4" X 1-1/2" S/S FLAT T304	8 in	
						61	1	SSP020000404	2" SCH 40 S/S PIPE T304	69 15/16 in	
						62	3	SSP020000404	2" SCH 40 S/S PIPE T304	75 3/4 in	
						63	4	SSP060000404	6" SCH 40 S/S PIPE T304	43 5/16 in	
						65	4	SSS480965004	48 X 96 X 1/2 304/304L PLATE	10 1/8 in	10 1/8 in
						66	4	SSS480967504	48 X 96 X 3/4 304/304L PLATE	6 5/8 in	6 5/8 in
						67	4	SSS481200724	48 X 120 X 7 GA 2B T304	25 1/2 in	8 in
						68	2	SSS481200724	48 X 120 X 7GA 2B SPVOS T304	2 1/4 in	2 1/4 in
						69	4	SSS481200724	48 X 120 X 7GA 2B SPVOS T304	2 in	1 3/4 in
						70	1	SSS481201024	48 X 120 X 10 GA 2B SPVOS T304	378 3/16 in	8 in
						71	1	SSS481201124	48 X 120 X 11 GA 2B SPVOS T304	63 3/16 in	4 in
						72	1	SSS481201124	48 X 120 X 11 GA 2B SPVOS T304	94 9/16 in	5 1/4 in
						73	1	SSS481201124	48 X 120 X 11 GA 2B SPVOS T304	9 7/8 in	28 1/2 in
						74	1	SSS481201124	48 X 120 X 11 GA 2B SPVOS T304	11 1/8 in	30 1/4 in
						75	1	SSS481201124	48 X 120 X 11 GA 2B SPVOS T304	22 7/8 in	4 in
						76	1	SSS481201124	48 X 120 X 11 GA 2B SPVOS T304	22 7/8 in	4 in
						77	63	SSS481201224	48 X 120 X 12 GA 2B SPVOS T304	3 5/8 in	1 1/2 in
						78	1	SSS481201224	48 X 120 X 12 GA 2B SPVOS T304	402 9/16 in	15 11/16 in
						79	2	SSS481201224	48 X 120 X 12 GA 2B SPVOS T304	1 3/16 in	5 in
						80	4	SSS481201224	48 X 120 X 12GA 2B SPVOS T304	14 13/16 in	8 5/8 in
						82	1	SSS481201444	48 X 120 X 14 GA T304 #4	130 5/16 in	130 5/16 in
						83	2	SSS481201624	48 X 120 X 16GA 2B SPVOS T304	6 1/2 in	1 7/8 in
						85	2	SSS481203754	48 X 120 X 3/8 PLATE 304 HRAP	24 13/16 in	5 in



FRONT VIEW SCALE 1/24

SIDE VIEW SCALE 1/24

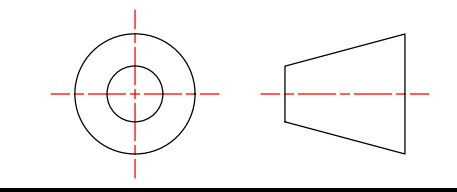
**VESSEL INFORMATION:**  
 GROSS VOLUME: 665 GAL  
 VESSEL DESIGN PRESSURE: 15PSI @ 140F  
 JACKET DESIGN PRESSURE: N/A  
 MAINTENANCE COOLING LOAD: N/A  
 GLYCOL VOLUME: N/A  
 WEIGHT OF CONTENTS: 53800 LBS  
 EMPTY WEIGHT: 6200 LBS

**CONFIDENTIAL:**  
 THIS DRAWING IS CONFIDENTIAL AND MAY BE SUBJECT TO PENDING PATENTS. IT MUST NOT BE COPIED, REPRODUCED OR SHOWN TO ANY THIRD PARTY OR PERSON WITHOUT THE CONSENT OF DME PROCESS SYSTEMS LTD.

**DME FABRICATION TOLERANCE**  
 UNLESS OTHERWISE SPECIFIED, DIMENSIONS ARE IN INCHES. TOLERANCES ARE:  
 FRACTIONS: ± 1/16  
 DECIMALS: .XX ± .01  
 ANGLES: ± 1/2°

**DME WELD AND FINISH STANDARDS**  
 T: TIG (GTAW)  
 M: MIG (GTAW)  
 S: STICK (GTAW)  
 O: ORBITAL (GTAW)

- 0 AS WELDED, LEFT AS LAID
- 1 AS WELDED DISCOLORATION REMOVED
- 2 ROUGH STARTS AND STOPS REMOVED
- 3 BRIGHENED ON A MARGIN
- 4 GROUND, FINISHED TO #4 ON MARGINS
- 6 GROUND, FINISHED TO #6 ON MARGINS
- (A) ACID CLEANING REQUIRED



REVISION HISTORY			
REV	DESCRIPTION	DFT	ENG
1	CUSTOM DESIGN	MM 15-May-19	
2	REMOVED SIGHT TUBE; ADDED PRESSURE REGULATING PORT	MM 27-May-19	
3	ROTATED LEGS, CIP ARM, DRAIN OUTLET	MM 04-Jun-19	
4	REMOVED TOP CAP, REMOVED PRESSURE REGULATING PORT; MOVED SENSOR FITTING FROM CIP ARM TO HEAD; ADDED SECOND SENSOR FITTING; ADDED TOP FITTING DRAINS	MM 17-Jun-19	
5	REMOVED (1) PRESSURE PORT; CAPPED TOP CLADDING OPENING; REMOVED DRAIN FROM TOP RING; MODIFIED CIP PORT, ARM, SPEAR	MM 19-Jun-19	
6	MOVED PRESSURE PORT; MOVED PVRV PORT; REMOVED TOP CAP; ADDED DRAIN FROM TOP RING; MODIFIED CIP PORT, ARM, SPEAR; REVISED LEG FINISH	MM 24-Jun-19	

**DME PROCESS SYSTEMS LTD.**  
 54 Hillstrom Ave, Charlotetown, PE  
 C1E 2C6, Canada Ph: (902) 628-6900 Fax: (902) 628-1313  
 www.dme.ca

RELEASED FOR FABRICATION	PROJECT DESCRIPTION
PROJECT NO. B5458-41	ZIEMANN-HOLVRIEKA
STANDARD -N/A-	DRAWING TITLE
	200 BBL D.A.W. TANK
DWG NO. N/A	REV 6
SCALE NTS	SIZE D
	SHEET 1 OF 8