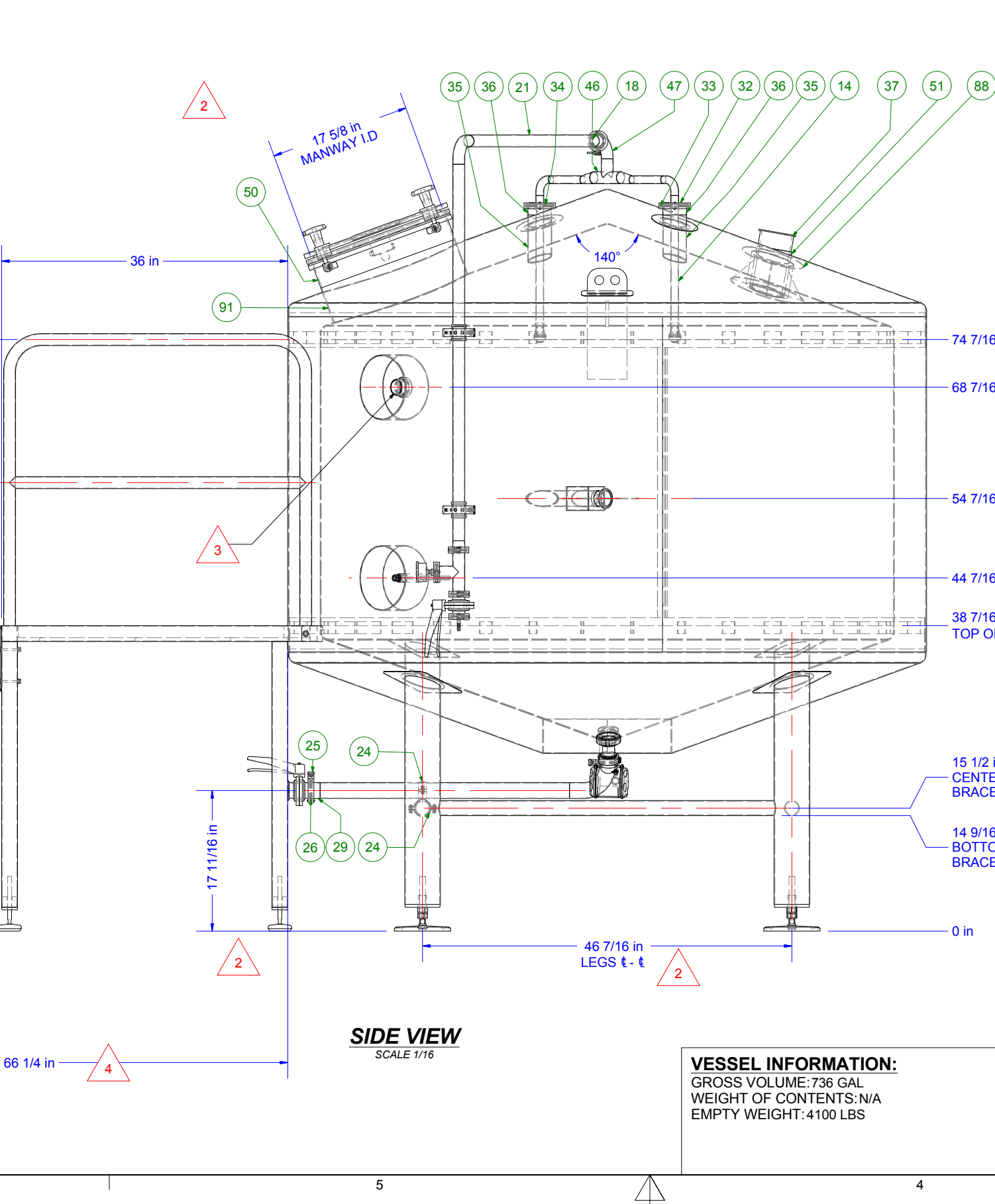
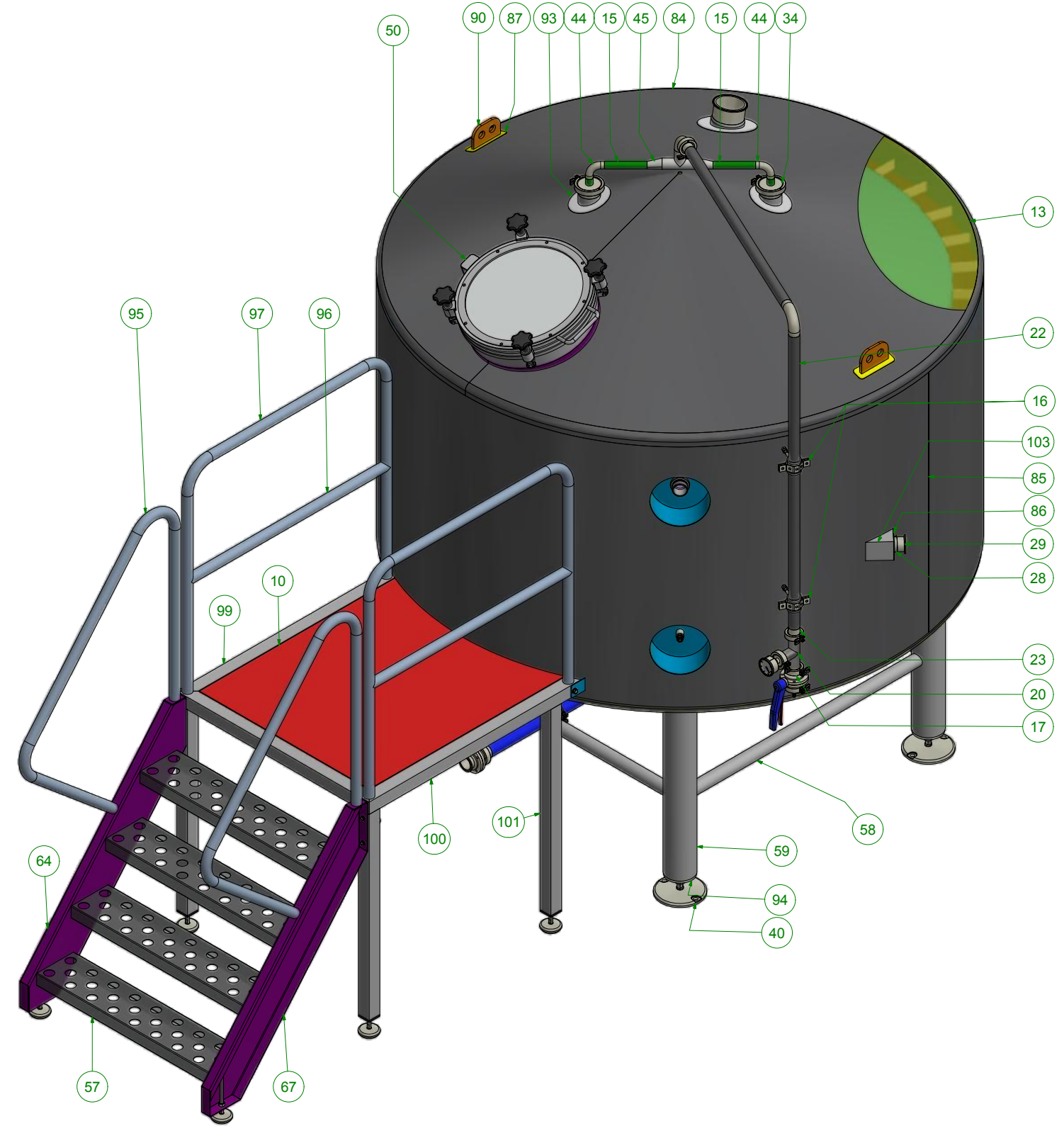


WELD FINISH

- INTERIOR: GROUND FLUSH, STAIN REMOVED, POLISHED TO #4 FINISH ON MARGIN
- EXTERIOR CLADDING: GROUND FLUSH, STAIN REMOVED, POLISHED TO #4 FINISH ON MARGIN
- EXTERIOR HEAD: ROUGH STARTS AND STOPS REMOVED, STAIN REMOVED, BRIGHENED ON A MARGIN
- TRIM RINGS: ROUGH STARTS AND STOPS REMOVED, STAIN REMOVED, BRIGHENED ON A MARGIN

MATERIAL FINISH

- SHELL: #2B
- CLADDING: #4 POLISH
- LEGS: #4 POLISH



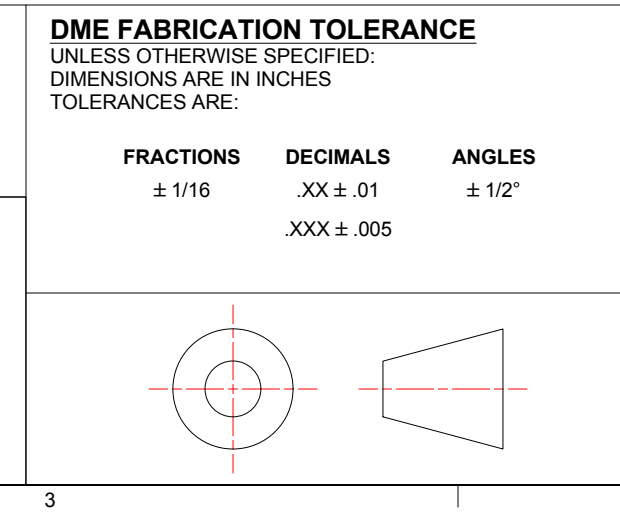
Parts List						Parts List					
ITEM	QTY	PART NUMBER	DESCRIPTION	LENGTH	WIDTH	ITEM	QTY	PART NUMBER	DESCRIPTION	LENGTH	WIDTH
78	1	SSS481201224	48 X 120 X 12GA 2B SPVOS T304	3 7/8 in		1	2	BALFUL40X10	40mm DIA x 1" TUBE FULL PAT		
79	1	SSS481201224	48 X 120 X 12 GA 2B SPVOS T304	251 5/8 in	4 3/8 in	2	1	BFV15000002T	1-1/2" T/C BUTTERFLY VALVE		
80	2	SSS481201224	48 X 120 X 12 GA 2B SPVOS T304	4 1/4 in	25 13/16 in	3	1	BFV20000002T	2" T/C BUTTERFLY VALVE		
81	2	SSS481201224	48 X 120 X 12 GA 2B SPVOS T304	2 5/8 in	2 in	4	4	BLT025250000	1/4" X 2 1/2" S/S HEX BOLT	1 1/2 in	
82	4	SSS481201424	48 X 120 X 14GA 2B SPVOS T304	7 13/16 in	7 1/2 in	5	2	BLT037100000	3/8" X 1" BOLT		
83	1	SSS481201444	48 X 120 X 14 GA T304 #4	87 7/16 in	87 7/16 in	6	2	BLT037350000	3" L/S HEX BOLT (Head cut off)	3 in	
84	1	SSS481201444	48 X 120 X 14 GA T304 #4	87 7/16 in	87 7/16 in	7	1	BOXTSRC.10	PVC STR. RELIEF CONN. FOR 14/4SOW		
85	1	SSS481201444	48 X 120 X 14 GA T304 #4	252 3/16 in	42 3/16 in	8	8	FW025000000	1/4" S/S FLAT WASHER		
86	1	SSS481201444	48 X 120 X 14 GA T304 #4	3 in	3 in	9	2	FW037500000	3/8" S/S WASHER		
87	2	SSS481201624	48 X 120 X 16GA 2B SPVOS T304	6 1/2 in	1 7/8 in	10	1	FIBERGLASS GRAT	FIBERGLASS GRATING 48 X 120	38 1/8 in	31 3/4 in
88	1	SSS481201624	48 X 120 X 16GA 2B SPVOS T304	8 in	8 in			48120			
89	2	SSS481203754	48 X 120 X 3/8 PLATE 304 HRAP	3 9/16 in	3 5/16 in	11	1	GAU00001250B	0-30 PSI/KPA BACK MT. GAUGE		
90	2	SSS481203754	48 X 120 X 3/8 PLATE 304 HRAP	14 in	5 in	12	1	HOS037505STUB	3/8" STUB HOSE BARB	1 1/2 in	
91	1	SSS481441126	48 X 144 X 11 GA T316-2B S/S	56 in	5 3/16 in	13	1	INS15MINWOOLROL	1.5" MINERAL WOOL 48" X 30'lg		
92	1	SSS600961026	60 X 96 X 10GA 316/316L -2B	78 11/16 in		14	2	JEN10007TUBE316	1" SANIT. TUBE POL. ID/OD T316	17 1/8 in	
93	2	SSSBL0W0UTPATCH 07	6" OD 3" ID			15	2	JEN10007TUBE316	1" SANIT. TUBE POL. ID/OD T316	5 5/8 in	
94	4	SSLEGCAP040PIPE	4" PIPE LEG CAP 1 1/16" HOLE			16	2	JEN15000ANCHPVC	1 1/2" TUBE HANGER c/w PVC SLEEVE		
95	2	SST1500P0654	1-1/2" RD. ORNA TUBE	94 15/16 in		17	5	JEN15000CLMP	1 1/2" CAST HEVY DUTY CLAMP		
96	2	SST1500P0654	1-1/2" RD. ORNA TUBE	37 1/4 in		18	5	JEN15000GASEPDM	1-1/2" T/C EPDM GASKET; 40MP-E-1-1/2		
97	2	SST1500P0654	1-1/2" RD. ORNA TUBE	105 13/16 in		19	1	JEN15000TCCP316	1-1/2" T/C CAP, T316L		
98	1	SST2020P0654	2"X2"X.065 ORNA TUBE T304	36 in		20	1	JEN15007TCTE316	1 1/2" T/C TEE T316 POL. ID/OD	5 1/2 in	
99	1	SST2020P0654	2"X2"X.065 ORNA TUBE T304	40 1/4 in		21	1	JEN15007TUBE316	1-1/2" TUBE T316 POL. ID/OD	37 5/8 in	
100	1	SST2020P0654	2"X2"X.065 ORNA TUBE T304	40 1/4 in		22	1	JEN15007TUBE316	1-1/2" TUBE T316 POL. ID/OD	47 3/8 in	
101	2	SST2020P0654	2"X2"X.065 ORNA TUBE T304	33 7/16 in		23	2	JEN15010FERR316	1 1/2" x 1 1/8" LONG FERR. T316L	1 1/8 in	
102	2	SST2020P0654	2"X2"X.065 ORNA TUBE T304	33 7/16 in		24	2	JEN20000ANCH.CN	2in TUBE HANGER, NO STAND OFF		
103	1	SST3030.1204	3" X 3" X .120" wall MILL tube	5 in		25	2	JEN20000CLMP	2" CAST HEVY DUTY CLAMP, T304		
104	1	THERMOWELL09	9" CRN THERMOWELL 316/316L			26	2	JEN20000GASEPDM	2" T/C EPDM GASKET; 40MP-E-2		
						27	1	JEN20007TUBE316	2" TUBE T316 POL. ID/OD	31 3/8 in	
						28	1	JEN20007TUBE316	2" TUBE T316 POL. ID/OD	12 in	
						29	2	JEN20010FERR6	2" x 1 1/8" L/T/C FERRULE SS316L	1 1/8 in	
						30	1	JEN20030FERR	2" x 3" L/T/C FERRULE T304	3 in	
						31	1	JEN20907BWTCEL316	2" 90 DEG ELBOW BWT/C T316		
						32	2	JEN30000CLMP	3" HEAVY DUTY CLAMP		
						33	2	JEN30000GASEPDM	3" T/C EPDM GASKET		
						34	2	JEN30000TCCP316	3" T/C CAP T316L		
						35	2	JEN30007TUBE316	3" SAN. TUBE T316-316L POL. ID/OD	6 1/16 in	
						36	2	JEN30010FERR316	3" x 1 1/8" L/T/C FERRULE	1 1/8 in	
						37	1	JEN40021FERRTK	4" x 2.125" 316L SA479	3 in	
						38	4	LW025000000	1/4" S/S NYLON LOCK NUT		
						39	2	LW037000000	3/8" S/S LOCK WASHER 18.8		
						40	4	LEG13000075	7.09"Dx 3/4" THD - 6" L S/S FOOT		
						41	6	LEG295061770	2.95" Dx 1/2" THDx 6" LG S/S FOOT		
						42	4	LEGINsert 003	1/2"-13 LEG INSERT = 2" SQ. TUBE		
						43	1	MCH15025CUPADPT316	1 1/2" T/C x 1/4" COUPLING T316L		
						44	2	NON STOCK	1" 90 DEG. ELBOW POL. ID/OD T316		
						45	2	NON STOCK	1 1/2" x 1" ECC. REDUCER POL. ID/OD T316		
						46	1	NON STOCK	1 1/2" B/W TEE SS316L		
						47	1	NON STOCK	1.5" T/C 1 END 90-ELBOW T316		
						48	1	NON STOCK	1 1/2" 90 DEG. BW ELBOW POL. ID/OD SS316L		
						49	2	NON STOCK	UNI D65 WELD IN ADAPTOR (ENDRESS & HAUSER)		
						50	1	NON STOCK	MC-D26 450MM MANWAY T316		
						51	1	NON STOCK	4" SCH 80 S/S PIPE T316/316L	5 15/16 in	
						52	4	NUT07500COUPLING	3/4" S/S MILLED COUPLING NUT		
						53	2	NUT050000000	1/2" S/S HEX HEAD NUT		
						54	6	NUT037000000	3/8" S/S HEX NUT		
						55	4	NUT075000000	3/4" S/S NUT		
						56	1	SSA12121874	1-1/4"X1-1/4"X3/16" SS ANGLE T304	34 in	
						57	4	SSG071442SG4	7" x 2" x 144" x 16 GA. SAFETY GRIP	32 1/4 in	
						58	4	SSP015000104POL	1 1/2" SCH 10 POL PIPE T304	48 1/16 in	
						59	4	SSP040000104POL	4" SCH 10 S/S 180G POL. T304	33 1/8 in	
						60	3	SSR005000004	1/2" dia. S/S ROUND BAR, T304	32 in	
						61	1	SSS480961226	48 X 96 X 12GA T316 2B S/S	226 1/2 in	36 in
						62	1	SSS480961226	48 X 96 X 12GA T316 2B S/S	78 11/16 in	78 11/16 in
						63	1	SSS481201124	48 X 120 X 11 GA 2B SPVOS T304	50 5/8 in	4 1/4 in
						64	1	SSS481201124	48 X 120 X 11 GA 2B SPVOS T304	46 3/8 in	11 1/8 in
						65	1	SSS481201124	48 X 120 X 11 GA 2B SPVOS T304	9 13/16 in	1 1/2 in
						66	1	SSS481201124	48 X 120 X 11 GA 2B SPVOS T304	10 7/16 in	1 1/2 in
						67	1	SSS481201124	48 X 120 X 11 GA 2B SPVOS T304	46 3/8 in	11 1/8 in
						68	1	SSS481201124	48 X 120 X 11 GA 2B SPVOS T304	9 13/16 in	1 1/2 in
						69	1	SSS481201124	48 X 120 X 11 GA 2B SPVOS T304	10 7/16 in	1 1/2 in
						70	1	SSS481201124	48 X 120 X 11 GA 2B SPVOS T304	9 9/16 in	9 9/16 in
						71	1	SSS481201124	48 X 120 X 11 GA 2B SPVOS T304	4 in	1 1/2 in
						72	1	SSS481201124	48 X 120 X 11 GA 2B SPVOS T304	3 3/4 in	1 11/16 in
						73	1	SSS481201124	48 X 120 X 11 GA 2B SPVOS T304	3 5/8 in	1 13/16 in
						74	1	SSS481201124	48 X 120 X 11 GA 2B SPVOS T304	4 1/16 in	1 7/16 in
						75	4	SSS481201224	48 X 120 X 12 GA 2B SPVOS T304	7 in	6 3/8 in
						76	1	SSS481201224	48 X 120 X 12GA 2B SPVOS T304	3 13/16 in	
						77	1	SSS481201224	48 X 120 X 12 GA 2B SPVOS T304	251 1/8 in	4 7/16 in

CONFIDENTIAL:
THIS DRAWING IS CONFIDENTIAL AND MAY BE SUBJECT TO PENDING PATENTS. IT MUST NOT BE COPIED, REPRODUCED OR SHOWN TO ANY THIRD PARTY OR PERSON WITHOUT THE CONSENT OF DME PROCESS SYSTEMS LTD.

DME WELD AND FINISH STANDARDS
T: TIG (GTAW)
M: MIG (GTAW)
S: STICK (GTAW)
O: ORBITAL (GTAW)

DME FABRICATION TOLERANCE
UNLESS OTHERWISE SPECIFIED:
DIMENSIONS ARE IN INCHES
TOLERANCES ARE:
FRACTIONS ± 1/16
DECIMALS .XX ± .01
XXX ± .005
ANGLES ± 1/2°

DME PROCESS SYSTEMS LTD.
54 Hillstrom Ave, Charlottetown, PE
C1E 2C6, Canada Ph: (902) 628-6900 Fax: (902) 628-1313
www.dme.ca



REV	DESCRIPTION	DFT	ENG
1	CUSTOM DESIGN	CM 14/MAY/2019	
2	INCREASED HEIGHT FROM FLOOR TO DRAIN CENTER, ADDED CHART FOR INTERIOR AND EXTERIOR FINISHES, ADDED CUSTOMER REQUESTED DIMENSIONS	CM 27-May-19	
3	CHANGED FROM A RD 52 TO A UNI D65 FITTING. ADDED WORK PLATFORM BY MANWAY	CM 18-Jun-19	
4	ADDED PLATFORM PROTRUDING DISTANCE, AND WORKING HEIGHT DIMENSIONS	CM 24-Jun-19	

DME PROCESS SYSTEMS LTD.
54 Hillstrom Ave, Charlottetown, PE
C1E 2C6, Canada Ph: (902) 628-6900 Fax: (902) 628-1313
www.dme.ca

RELEASED FOR FABRICATION

PROJECT NO. **B5458-40**

STANDARD --

PROJECT DESCRIPTION
ZIEMANN-HOLVREIKA - TWEED INC

DRAWING TITLE
20 BBL MIXING TANK

DWG NO. **B5458-40**

SCALE **NTS**

REV **4**

SHEET **1 OF 9**